

DATA CONTAINED IN THIS DOCUMENT IS
PROPRIETARY TO TROMPETER ELECTRONICS INC.
AND SHALL NOT BE DISCLOSED, COPIED OR USED
FOR PROCUREMENT OR MANUFACTURE WITHOUT
EXPRESS WRITTEN PERMISSION.

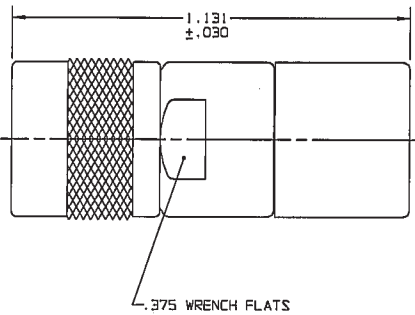
REVISIONS				3-0029	SH 1
REV	ECO	DESCRIPTION	DWN	APPROVED	DATE
M	13543	MODIFY NOTE 3, SHEET 1 & NOTE 4, SHEET 2 SEE ECO	R L	<i>nm.</i>	8/23/00

RED INDICATES ORIGINAL

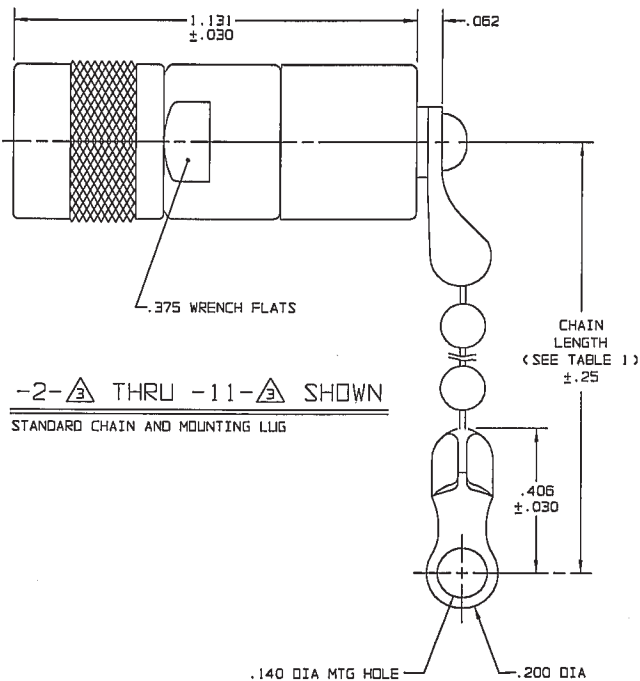
TABLE 1	
DASH NO	DESCRIPTION
-1	TERM (NO CHAIN)
-2	TERM WITH 2.5 BRASS CHAIN
-3	TERM WITH 2.5 NYLON CHAIN
-4	TERM WITH 3.0 BRASS CHAIN
-5	TERM WITH 3.0 NYLON CHAIN
-6	TERM WITH 6.0 BRASS CHAIN
-7	TERM WITH 6.0 NYLON CHAIN
-8	TERM WITH 4.0 BRASS CHAIN
-9	TERM WITH 4.0 NYLON CHAIN
-10	TERM WITH 10.0 BRASS CHAIN
-11	TERM WITH 10.0 NYLON CHAIN
-12	TERM WITH 2.5 SST ROPE
-13	TERM WITH 3.0 SST ROPE
-14	TERM WITH 6.0 SST ROPE
-15	TERM WITH 4.0 SST ROPE
-16	TERM WITH 7.5 SST ROPE
-17	TERM WITH 4.5 SST ROPE

TABLE 2			
DASH NO	"A" DIA	"B" DIA	"D" DIM
-02	.630	.750	1.066
-03	.505	.625	.941
-04	.439	.562	.878
-05	.380	.500	.816
-06	.317	.437	.753
-07	.281	.406	.722
-08	.610	.750	1.066
-09	.567	.687	1.003
-008	.330	.450	.766

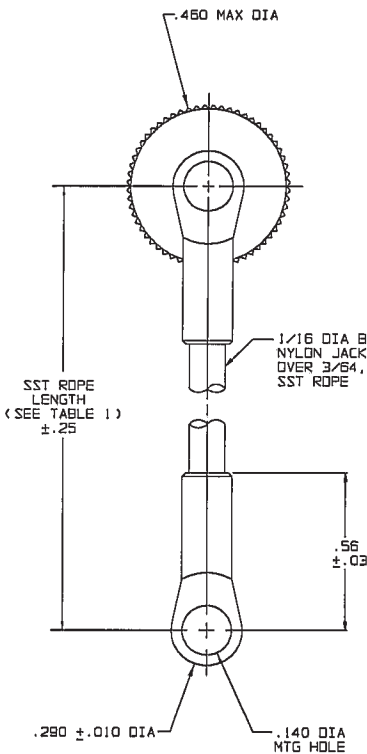
INCH	MM	INCH	MM	INCH	MM	INCH	MM	INCH	MM	INCH	MM
.005	0.13	.290	7.37	.406	10.31	.567	14.40	.878	22.30	7.0	177.80
.010	0.25	.295	7.49	.419	10.64	.610	15.49	.941	23.90	10.0	254.00
.030	0.76	.300	7.62	.437	11.10	.625	15.88	1.003	25.48		
.032	0.81	.317	8.05	.439	11.15	.630	16.00	1.066	27.08		
.062	1.57	.325	8.26	.450	11.43	.687	17.45	1.131	28.73		
.140	3.56	.330	8.38	.460	11.68	.722	18.34	2.5	63.50		
.200	5.08	.355	9.02	.500	12.70	.750	19.05	3.0	76.20		
.25	6.35	.375	9.53	.505	12.83	.753	19.13	4.0	101.60		
.278	7.06	.380	9.65	.56	14.22	.766	19.46	4.5	114.30		
.291	7.14	.388	9.86	.562	14.27	.816	20.73	6.0	152.40		



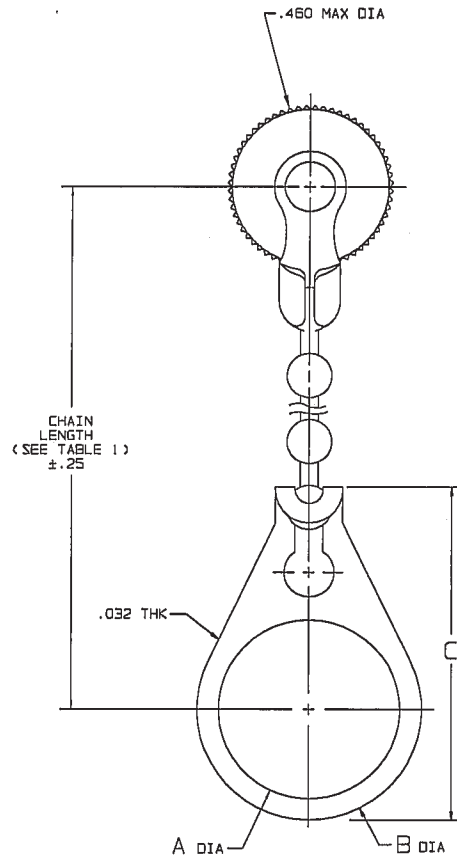
-1- SHOWN
NO CHAIN STAINLESS STEEL
ROPE OR MOUNTING LUG



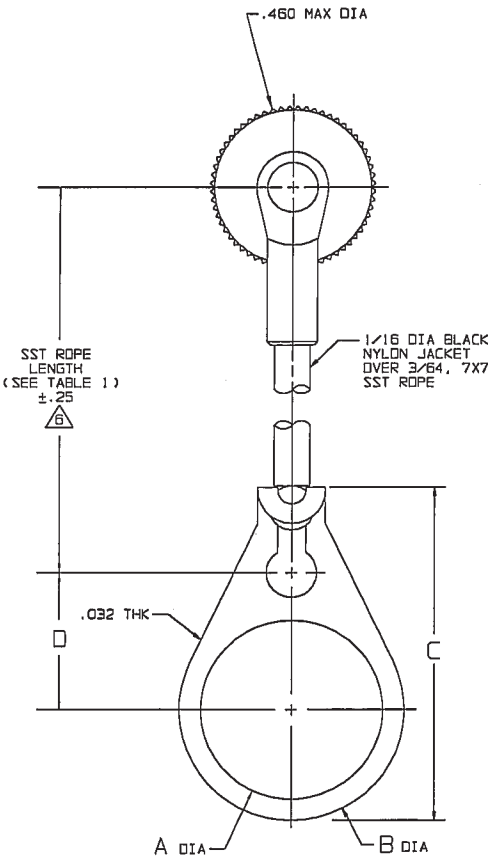
-2- THRU -11- SHOWN
STANDARD CHAIN AND MOUNTING LUG



-12- THRU
-17- SHOWN
STAINLESS STEEL ROPE
AND MOUNTING LUG



-2- -02 THRU
-11- -008 SHOWN
STANDARD CHAIN AND BULKHEAD
JACK MOUNTING LUG



-12- -02 THRU
-17- -008 SHOWN
STAINLESS STEEL ROPE AND BULKHEAD
JACK MOUNTING LUG

NOTE THAT LENGTH FOR SST ROPE
WITH MOUNTING LUG OPTION IS NOT
MEASURED TO CENTER OF BULKHEAD
MOUNTING LUG

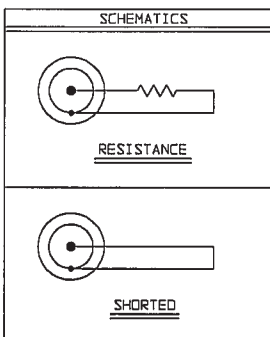
5. EXAMPLE OF COMPLETE MODEL NO:

TNGM1-1- -02
BASIC MODEL NO
CHAIN MATL AND
LENGTH
(SEE TABLE 1)
BULKHEAD JACK MOUNTING LUG
(OPTIONAL), AVAILABLE
WITH BRASS, NYLON CHAIN
AND SST ROPE, (SEE TABLE 2)

4. PIN CONTACT TRS SERIES CONCENTRIC TWINAX/
TRIAx 3 LUG SUBMINIATURE TERMINATED CABLE PLUG

RESISTANCE VALUE IN OHMS (1/8, 1/2)
S* = CONTACT SHORTED TO INNER SHIELD (NO RESISTOR) 4
0* = LOOSELY ASSEMBLED (NO RESISTOR)

2. FINISH: TFS-1A (NICKEL)
1. ALL DIM ARE IN INCHES



QTY	DESCRIPTION	PART NUMBER	ITEM
TOL UNLESS SPECIFIED .XX ± .XXX ±.005 XXX ± ANGLES	RF connectivity	TNGM1	
DWN R L B/A/OO CHK <i>nm.</i> 8/21/00 ENGR <i>nm.</i> 8/21/00	MATERIAL CODE IDENT 14949	DRAWING NO. 3-0029	REV M
NEXT ASSY APPR <i>nm.</i> 8/21/00	SCALE 4/1	DATE 8-11-78	SHEET 1C

X-ON Electronics

Largest Supplier of Electrical and Electronic Components

Click to view similar products for [RF Terminators](#) category:

Click to view products by [Bel Fuse](#) manufacturer:

Other Similar products are found below :

[M390303-02N](#) [M39030/3-04S](#) [M39030/3-09S](#) [M39030/3-11N](#) [TNG1-9-78-D3](#) [TNA2-50](#) [TNG1-6-78](#) [TNH1-1-50](#) [TNGFL1-1-78](#)
[R4042N5000](#) [53S1RR-001N3](#) [142275](#) [56S1RR-001N4](#) [65_BNC-50-0-7/133_NE](#) [71S1RR-001N4](#) [02S17R-001D3](#) [R404240120](#) [R404260000](#)
[HT-10-2](#) [FL LCX 50-OHM-RSMA](#) [M39030/3-04N](#) [TNA1-6-50](#) [131-3801-811](#) [TNA1-1-50](#) [65_N-50-0-51/113_NE](#) [65_BNC-50-0-2/133_NE](#)
[65_N-50-0-1/133_NE](#) [65002_N-50-1/122_NE](#) [65_MMCX-50-0-31/111_OE](#) [18K15R-0.5E3](#) [2702702](#) [TRM-2161-M0-35M-02](#) [53S17R-](#)
[001N3](#) [1100.19.0001](#) [6701.01.B](#) [18S24H-40ML5](#) [TRM-2053-M0-NNN-02](#) [R404759000](#) [M39030/6-02N](#) [TRM-2053-MC-NNN-02](#)
[M39030/3-03S](#) [SF8012-6009](#) [6701.01.A](#) [65_MCX-50-0-4/111_NE](#) [65_716-50-0-2/003_-E](#) [65_SMB-50-0-1/111_NE](#) [M39030/3-12N](#) [82-](#)
[5722-RFX](#) [8018-6174](#) [SF8018-6005](#)