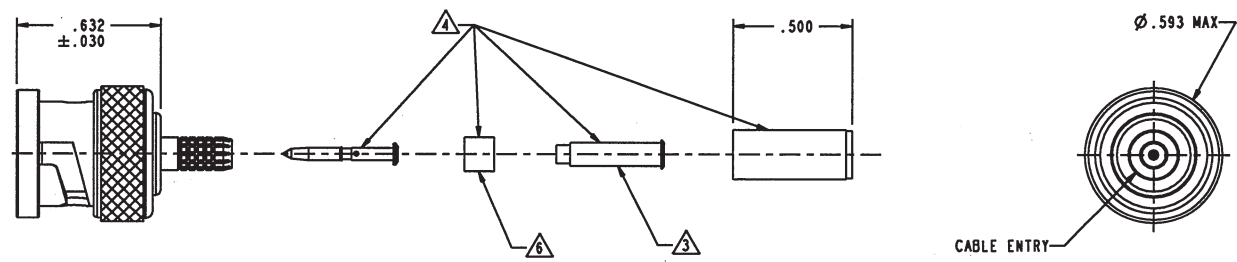


| DASH NO | CABLES ACCOMMODATED | A HEX | ASSEMBLE PER | |
|---------|---|----------|--------------|------|
| -001 | RG-178, -196 | .178 | TAI-D118 | |
| -002 | HEWLETT PACKARD 8120-1107 | .197 | | |
| -003 | RG-174, 316 | .178 | | |
| -004 | RG-179, 187 | | | |
| -005 | NORTHERN ELECTRIC DBL-SHLD RG-187 | .197 | | |
| -006 | GC875GP1, GRUMMAN DBL-SHLD RG-188 | | | |
| -007 | 275-3991, MICRODOT | .178 | | |
| -008 | RG-195, -180 421-111, ESSEX | | | |
| -009 | 8218, BELDEN YR23023 BELDEN 21-597, ESSEX | | | |
| -010 | RG-122 | | | |
| -011 | RG-58; RG-141; RG-303, TCC-50-2 | | | .213 |
| -012 | RG-55, -142 -223, -400 | | | |
| -013 | RG-59 | | | .255 |
| -013A | TCC-75-2 | | | |
| -014 | 8212, BELDEN | | | .290 |
| -015 | 730A, LUCENT | | | |
| -016 | 724, LUCENT 8281, BELDEN | .324 | | |
| -017 | RG-6 | | | |
| -018 | 9268, BELDEN | .255 | | |
| -019 | 8279, BELDEN | | | |
| -020 | 9248, BELDEN | .290 | | |
| -021 | 88240, BELDEN | | | |
| -022 | 88241, 88269, BELDEN | TAI-C118 | | |
| -023 | 89108, BELDEN | .290 | | |
| -024 | 89120, BELDEN | | | |
| -025 | 734A, LUCENT | .255 | | |
| -026 | 735A, LUCENT | | | |
| -026-X | | .178 | | |
| -027 | KS19224L2, LUCENT | .324 | | |
| -030 | 32448A, DRAKA | | | |
| -031 | CDT RA7000 | | | |
| | | .213 | TAI-D118 | |

DATA CONTAINED IN THIS DOCUMENT IS PROPRIETARY OF TROMPETER ELECTRONICS INC. AND SHALL NOT BE DISCLOSED, COPIED OR USED FOR PROCUREMENT OR MANUFACTURE WITHOUT EXPRESS WRITTEN PERMISSION.

| REVISIONS | | | |
|-----------|------------------------|--------|-------------|
| REV | DESCRIPTION | DATE | APPROVED |
| AU | REVISED PER ECO# 16945 | 8/5/08 | [Signature] |



RED INDICATES ORIGINAL



- ⚠ IF PLASTIC STRAIN RELIEF REQUIRED, ADD SUFFIX "BT" TO MODEL NO. (ONLY AVAILABLE WITH -011, -013 & -013A)
- ⚠ CONTACT SUPPORT BUSHING READ ON -002 THRU -007-022 & -027 ONLY
- 5. RF COAXIAL 75 OHM BNC FULL CRIMP CABLE PLUG
- ⚠ PIN, SLEEVE, CRIMP SLEEVE & CONTACT SUPPORT BUSHING ARE SUPPLIED LOOSE
- ⚠ SLEEVE REQUIRED ON -001 THRU -007 & -027 ONLY
- 2. FINISH: TFS-1A NICKEL
- 1. ALL DIM ARE IN INCHES

⚠ FOR CABLE GROUP -011 SUPPLY 1 EA ACCO11 FOR CABLE GROUPS -013 & -013A SUPPLY 1 EA ACCO13 MAY BE ASSEMBLED TO CABLE CONNECTOR ASSY USING 3M SCOTCHGRIP NO 1099 PLASTIC ADHESIVE, OR EQUIV

NOTES: UNLESS OTHERWISE SPECIFIED.

| | | | | | |
|--|---------------|---|--|-------------|---------|
| INTERPRET DRAWING PER MIL-STD-100. DIMENSIONS ARE IN INCHES AND INCLUDE FINISH THICKNESS UNLESS OTHERWISE SPECIFIED. | | TOL: UNLESS SPECIFIED .XX ± .02 .XXX ± .010 ANGLE ± 1° | | UPL220 | |
| DATE | L. M. 7-30-09 | MATERIAL | | | |
| CHK | M. J. 8-5-09 | FINISH | | DRAWING NO. | 1-0468 |
| QUALITY | | | | REV | AU |
| DATE | 8-5-09 | | | SCALE | 2/1 |
| PROVE FILE NO. | 1-0468 | DO NOT SCALE DWG | | DATE | 2/17/82 |
| NEXT ASSY | | | | SHEET | IC |

X-ON Electronics

Largest Supplier of Electrical and Electronic Components

Click to view similar products for [RF Connectors / Coaxial Connectors](#) category:

Click to view products by [Bel Fuse](#) manufacturer:

Other Similar products are found below :

[8915-1511-000](#) [89674-0827](#) [6001-7071-019](#) [6002-7051-003](#) [6002-7551-202](#) [6059674-1](#) [619550-1](#) [630059-000](#) [M39030/3-01N](#) [6500-7071-046](#) [6769](#) [CX050L2AQ](#) [7002-1541-010](#) [7002-1542-011](#) [7004-1512-000](#) [7009-1511-004](#) [7010-1511-000](#) [7029-1511-060](#) [7101-1541-010](#) [7101-1571-002](#) [7145-1521-002](#) [7203-1571-003](#) [7209-1511-011](#) [7210-1511-015](#) [7210-1511-019](#) [73137-5015](#) [73216-2241](#) [73404-2300](#) [7405-1521-005](#) [7405-1521-802](#) [8527](#) [8547](#) [FS11V](#) [877931](#) [9049-9513-000](#) [9074-9513-000](#) [9101-9573-002](#) [910A205F](#) [9130-9573-002](#) [PL11SC-026](#) [PL375-33](#) [PL40-5](#) [PL74C-221](#) [PL75MC-217](#) [PL803-7](#) [980-8666-005](#) [1200690078](#) [1-201144-1](#) [R107003010W](#) [R110A172100](#)