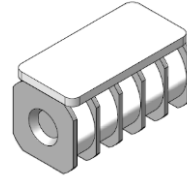


Features

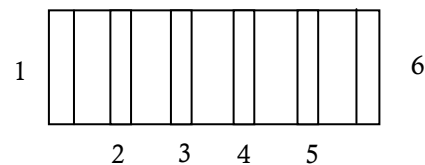
- High Current Handling Capability 20,000A @ 8/20 μ s
- Low Capacitance and Insertion Loss
- Fast Response and Long Service Life
- Moisture sensitivity level: Level 1



Exterior


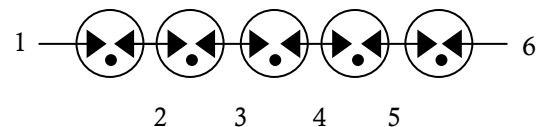
Note: The product body and the chip are stucked with glue.

Application Information

- Wireless Base Station
- DC-48V Power Port

Package (Top View)

Agency Approvals

Icon	Description
RoHS	Compliance with 2011/65/EU
HF	Compliance with IEC61249-2-21:2003
	Mean lead free
	Compliance with UL1449, Certificated E337906

Schematic Symbol

Electrical Parameter

DC Breakdown Voltage ^{1) 2)} (pin1-6)	100V/s	700-1200 (Before test)	V
		500-1300 (After test)	
DC Breakdown Voltage ^{1) 2)} (pin1-2,pin2-3,pin3-4,pin4-5,pin5-6)	100V/s	140-250	V
Impulse Spark-Over Voltage (pin1-6) ³⁾	1.2/50 μ s -8/20 μ s: 6KV/3KA	\leq 900 (Before test)	V
		\leq 1500 (After test)	
Impulse Discharge Current ⁴⁾	10/350 μ s, \pm 5times	2.5	KA
	8/20 μ s, \pm 5times	20	KA
Insulation Resistance	DC100V	\geq 1	G Ω
Maximum DC Working Voltage		60	V
Arc Voltage	At 50 A	\geq 60	V
Capacitance at 1 MHz	V _{DC} =0.5V	\leq 1.5	pF
Operating and storage Temperature		-40-125	$^{\circ}$ C
Weight		\sim 5.35	g
Marking		Without	

1) At delivery AQL 0.65 level II ISO 2859

2) In ionized mode

3) With 100PF capacitor trigger

4) Terms and current waveforms in accordance with ITU-T Rec. K. 12; IEC 61643-21

Part Numbering System

BD 122 - 2
 (1) (2) (3)

- (1) Bencent Multi-pole Arrester Stack
 (2) Max DC Breakdown Voltage, e.g., 122=12×10²=1200V
 (3) “-2” is stand for special customer requirements

Product Characteristics

Lead Material	Copper
Body Material	Ceramics
Terminal Finish	100% Matte-Tin Plated

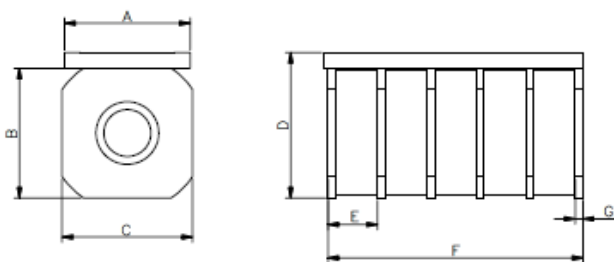
Environmental Reliability Characteristics

Testing items	Technical standards
High Temperature Storage Test	Temperature: 125°C Time: 2H
Low Temperature Storage Test	Temperature: -40°C Time: 2H
Vibration	Frequency: 10-500Hz Amplitude: 0.15mm Time: 45mins
Resistance of soldering heat	Temperature: 260±5°C Time of dip soldering: 10s, 1time

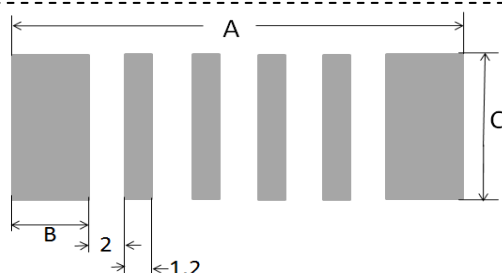
Note: Up-screen program can be specified by customer's request via contacting Bencent service

Solderability Test

Solderability	Solder Pot Temperature:	245°C ± 5°C
	Solder Dwell Time:	4-6 seconds

Product Dimensions


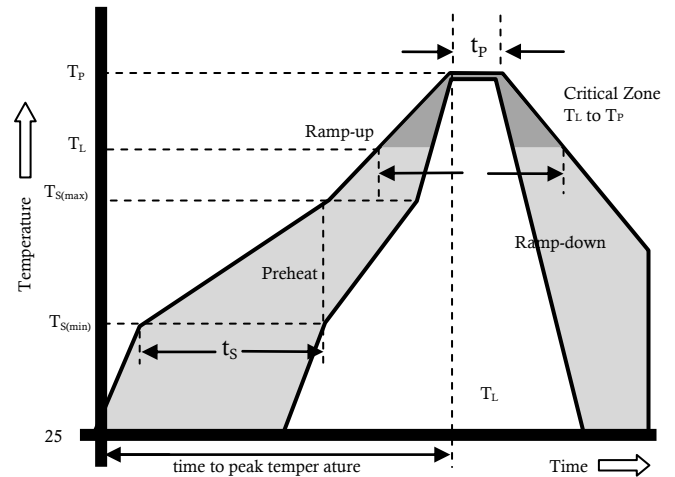
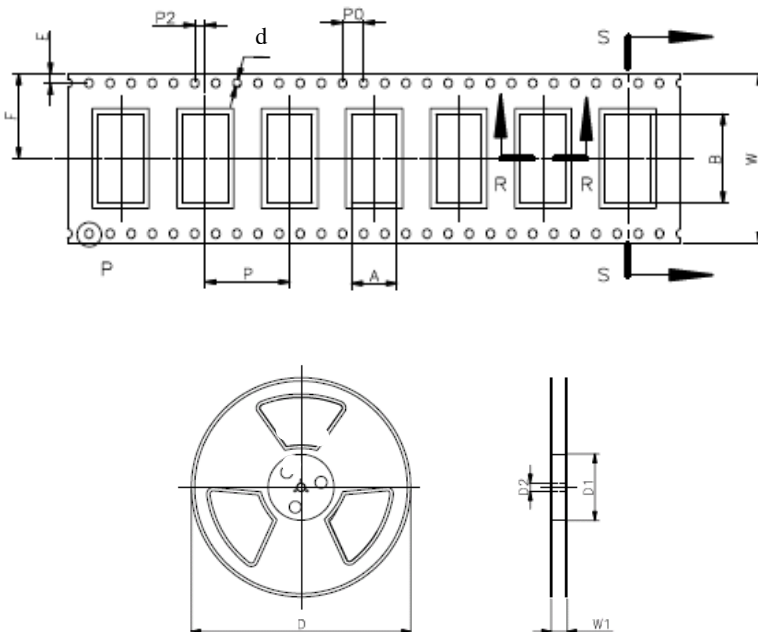
REF	mm	inch
A	8±0.2	0.315±0.008
B	8.3±0.2	0.327±0.008
C	8.3±0.2	0.327±0.008
D	9.5±0.2	0.374±0.008
E	3.2±0.2	0.126±0.008
F	16.5±0.5	0.65±0.02
G	0.5±0.05	0.02±0.002

Recommended Soldering Pad


REF	mm	inch
A	23	0.906
B	4.1	0.161
C	8.5	0.335

Reflow Profile

Reflow Condition		Pb-Free assembly
Pre Heat	Temperature Min	150°C
	Temperature Max	200°C
	Time (min to max)	60 – 180 secs
Average ramp up rate (Liquids) T _{amp} (T _L) to peak		3°C/second max
T _{S(max)} to T _L - Ramp-up Rate		3°C/second max
Reflow	- Temperature (T _L) (Liquids)	217°C
	- Temperature (T _L)	60 – 150 seconds
Peak Temperature (T _p)		260+0/-5 °C
Time within 5°C of actual peak Temperature (t _p)		20 – 40 seconds
Ramp-down Rate		6°C/second max
Time 25°C to peak Temperature (T _p)		8 minutes Max.
Do not exceed		260°C


Package Reel Information


REF	mm	inch
W	32±0.3	1.260±0.012
A	8.6±0.1	0.339±0.004
B	17.3±0.1	0.661±0.004
P	16±0.1	0.63±0.004
P0	4±0.1	0.157±0.004
P2	2±0.1	0.079±0.004
d	Φ1.5 ^{+0.1} ₋₀	Φ0.059 ^{+0.004} ₋₀
E	1.75±0.1	0.069±0.004
F	20.25±0.1	0.797±0.004
W1	36±2.0	1.89±0.079
D	Φ330.2	Φ13
D1	Φ100±1	Φ3.94±0.039
D2	Φ13±0.15	0.512±0.006

OUTLINE	BOX/REEL (PCS)	INSIDE CARTON (PCS)	PER CARTON (PCS)	CARTON SIZE(mm)		
				L	W	H
TAPING	300	300	1200	360	360	220

X-ON Electronics

Largest Supplier of Electrical and Electronic Components

Click to view similar products for [Gas Discharge Tubes - GDTs / Gas Plasma Arrestors](#) *category:*

Click to view products by [Bencent](#) *manufacturer:*

Other Similar products are found below :

[PMT1023004](#) [PMT1025001](#) [RF3161-000](#) [PMT1035004](#) [PMT1040004](#) [PMT809006](#) [CG2250](#) [CG2800](#) [CG31.5L](#) [GT-SMD181240012-TR](#)
[WPGT-2N145B6L](#) [WPGT-2N230B6L](#) [WPGT-2N470B6L](#) [WPGT-2R470B6L](#) [WPGT-2RM230A6L](#) [WPGT-2RM350A6L](#) [WPGT-](#)
[2RM70A6L](#) [WPGT-2RM90A6L](#) [WPGT-2S145](#) [WPGT-2S350](#) [WPGT-2S470](#) [WPGT-3R350CF](#) [WPGT-3R350G1](#) [WPGT-3R90G1](#) [WPGT-](#)
[3R75G1](#) [WPGT-3R470G1](#) [WPGT-3R250C](#) [WPGT-3R230G1](#) [WPGT-2S230](#) [WPGT-2RM470A6L](#) [WPGT-2RM145A6L](#) [WPGT-2R3000B8L](#)
[WPGT-2R2700B8L](#) [WPGT-2R1000B8L](#) [WPGT-2N90B6L](#) [WPGT-2N70B6L](#) [WPGT-2N350B6L](#) [WPGT-2N230B6L1](#) [CG90](#) [CG2230](#)
[CG2145](#) [CG21000](#) [GT-SMD181215012-TR](#) [9071.99.0547 \(73_Z-0-0-547\)](#) [B88069X6940B152](#) [V20-1+NPE-280](#) [V20-3+NPE+FS-280](#)
[SD09-V24 9](#) [C50-0-255](#) [SG24PA300](#)