



Features

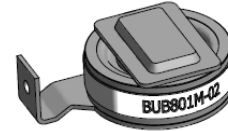
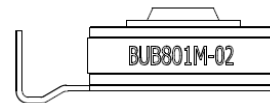
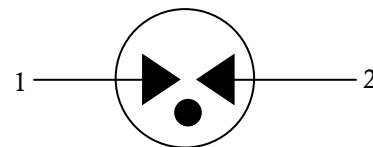
- HighCurrent Handling Capability 40,000A @ 8/20 μ s
- Low Capacitance and Insertion Loss
- QuickResponse and Long Service Life
- Moisture sensitivity level: Level 1

Application information

- AC 90~264V POWER

Agency Approvals

Icon	Description
RoHS	Compliance with 2011/65/EU
HF	Compliance with IEC61249-2-21:2003
	Mean lead free
	Compliance with UL 1449. Certificate E337906

Exterior

Package (Top View)

Schematic Symbol

Electrical Parameter

DC Breakdown Voltage ¹⁾²⁾	100V/s	520-780	V
Impulse Spark-over Voltage	At 1.2/50 μ s 6KV	for 99 % of measured values	≤ 1300
	At 1.2/50 μ s 6KV	Typical values of distribution	≤ 1300
Max. continuous operating voltage	U_C	260	V _{rms}
Nominal discharge current	8/20 μ s	$I_n=20,000$	A
Maximum discharge current	8/20 μ s	$I_{max}=40,000$	A
Follow current at 50/60 Hz		$U_C=260V, I_f=100 Arms$	
Arc Voltage	At 1A	~ 24	V
Insulation Resistance	DC=100V	≥ 1	G Ω
Capacitance at 1MHz	VDC=0.5V	≤ 4	pF
Weight		~ 5	g
Operating And Storage Temperature		-40-90	$^{\circ}C$

1) At delivery AQL0.65 level II ISO 2859

2) In ionized mode

3) Terms and waveforms in accordance with GB/T 18802.311-2007

Gas Discharge Tube

Version: A4 2017-11-16

Part Numbering System

B UB 801 M -02
 (1) (2) (3) (4) (5)

(1) Bencent

 (2) UB means Surge Rating $8/20\mu s@I_{max}=40KA$

 (3) DC Breakdown Voltage, e.g., $801=80 \times 10^1 V=800V$

 (4) Tolerance of DC Breakdown Voltage, $M=+20\%$,

 $N=+30\%$, the Specific tolerance is decided by the table of

“Electrical Parameter”

(5) “-02” means the special structure of this type.

Product Characteristics

Lead Material	Copper
Body Material	Ceramics
Terminal Finish	100% Matte-Tin Plated

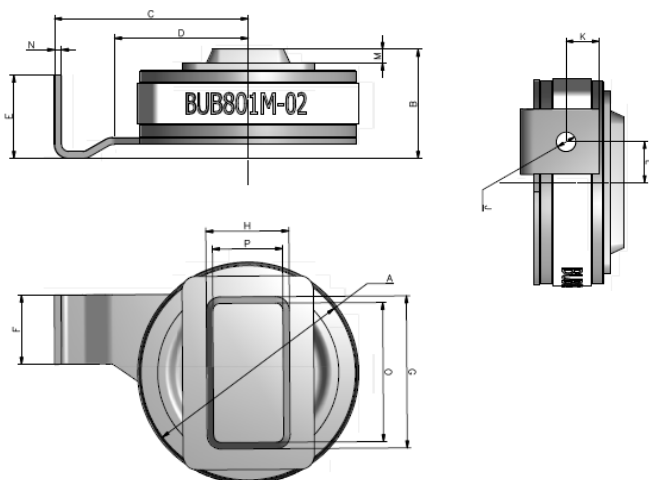
Environmental Reliability Characteristics

Testing items	Technical standards
High Temperature Storage Test	Temperature: 90°C Time: 2H
Low Temperature Storage Test	Temperature: -40°C Time: 2H
Vibration	Frequency: 10-500Hz Amplitude: 0.15mm Time: 45min
Resistance of soldering heat	Temperature: $260 \pm 5^\circ C$ Time of dip soldering: 10s, 1time

Note: Up-screen program can be specified by customer's request via contacting Bencent service

Solderability test

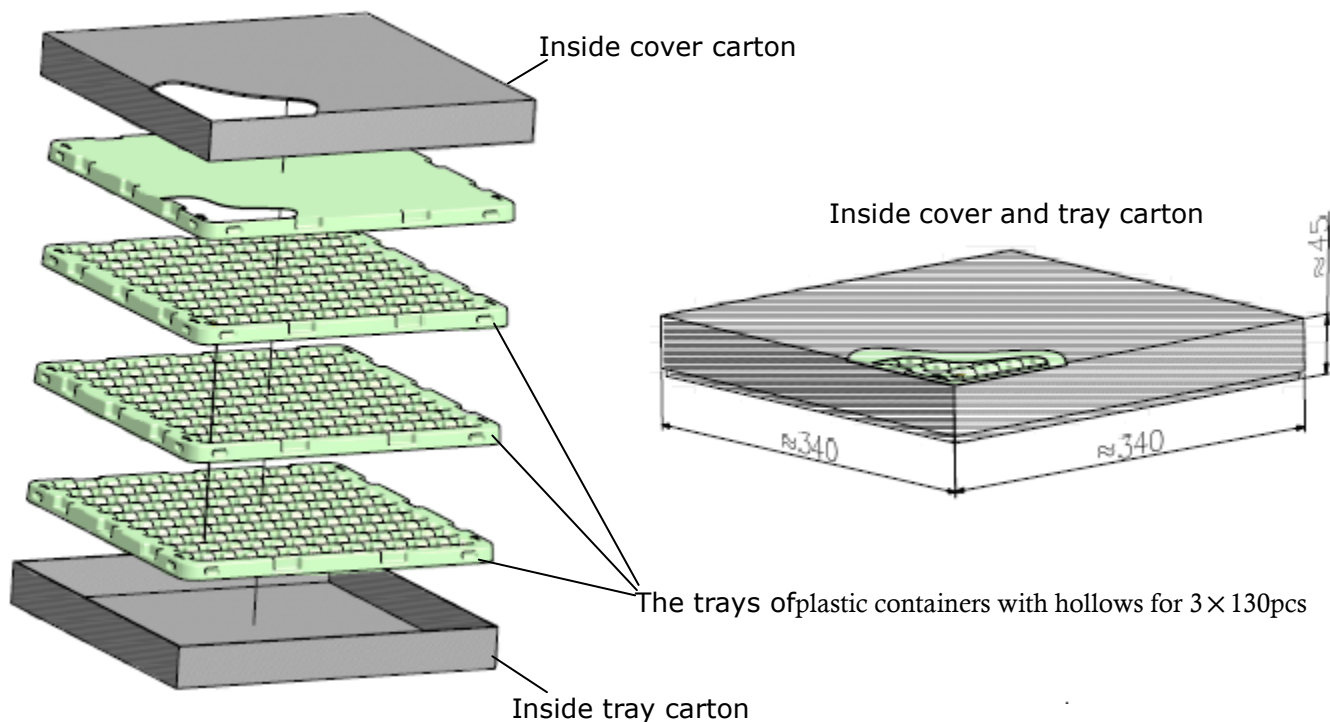
Solderability	Solder Pot Temperature:	$245^\circ C \pm 5^\circ C$
	Solder Dwell Time:	4-6 seconds

Product Dimensions


REF	mm	inch
A	$\Phi 16 \pm 0.5$	$\Phi 0.630 \pm 0.020$
B	7.7 ± 0.3	0.303 ± 0.012
C	14 ± 0.3	0.552 ± 0.012
D	(9.8)	(0.386)
E	6 ± 0.2	0.236 ± 0.008
F	$5^{+0.15}_{-0.05}$	$0.197^{+0.006}_{-0.002}$
G	11 ± 0.1	0.433 ± 0.004
H	6 ± 0.1	0.236 ± 0.004
J	$\Phi 1.5^{+0.05}_{-0.15}$	$\Phi 0.059^{+0.002}_{-0.006}$
K	2.5 ± 0.05	0.098 ± 0.002
L	(3.2)	(0.126)
M	1 ± 0.05	0.039 ± 0.002
N	0.5 ± 0.1	0.020 ± 0.004
O	10 ± 0.1	0.394 ± 0.004
P	5 ± 0.1	0.197 ± 0.004

PACKAGE BOX INFORMATION

Outline	Plastic containers(P CS)	Inside Coverand traycarton (PCS)	Outsidecarton (PCS)	Carton Size(mm)		
				L	W	H
Box	130	390	1560	360	360	220



Remarks: The outside carton has four inside cover and tray cartons for 4×390pcs

X-ON Electronics

Largest Supplier of Electrical and Electronic Components

Click to view similar products for [Gas Discharge Tubes - GDTs / Gas Plasma Arrestors](#) category:

Click to view products by [Bencent](#) manufacturer:

Other Similar products are found below :

[PMT1023004](#) [PMT1025001](#) [RF3161-000](#) [PMT1035004](#) [PMT1040004](#) [PMT809006](#) [CG2250](#) [CG2800](#) [CG31.5L](#) [GT-SMD181240012-TR](#)
[WPGT-2N145B6L](#) [WPGT-2N230B6L](#) [WPGT-2N470B6L](#) [WPGT-2R470B6L](#) [WPGT-2RM230A6L](#) [WPGT-2RM350A6L](#) [WPGT-](#)
[2RM70A6L](#) [WPGT-2RM90A6L](#) [WPGT-2S145](#) [WPGT-2S350](#) [WPGT-2S470](#) [WPGT-3R350CF](#) [WPGT-3R350G1](#) [WPGT-3R90G1](#) [WPGT-](#)
[3R75G1](#) [WPGT-3R470G1](#) [WPGT-3R250C](#) [WPGT-3R230G1](#) [WPGT-2S230](#) [WPGT-2RM470A6L](#) [WPGT-2RM145A6L](#) [WPGT-2R3000B8L](#)
[WPGT-2R2700B8L](#) [WPGT-2R1000B8L](#) [WPGT-2N90B6L](#) [WPGT-2N70B6L](#) [WPGT-2N350B6L](#) [WPGT-2N230B6L1](#) [CG90](#) [CG2230](#)
[CG2145](#) [CG21000](#) [GT-SMD181215012-TR](#) [B88069X6940B152](#) [V20-1+NPE-280](#) [V20-3+NPE+FS-280](#) [SD09-V24 9](#) [C50-0-255](#)
[SG24PA300](#) [A9L40500](#)