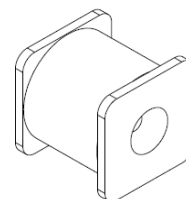


**Gas Discharge Tube  
Features**

- Size Design 7.0×6.0×6.0mm
- High Current Handling Capability 10,000A @ 8/20μs
- Low Capacitance and Insertion Loss
- Fast Response and Long Service Life
- Reliable to Protect Electrostatic Surge
- Moisture sensitivity level: Level 1

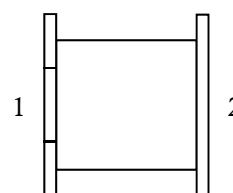
**Exterior**





**Application information**

- Coaxial Port

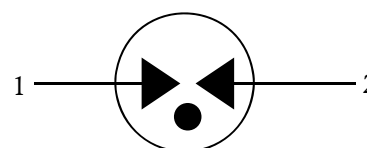
**Package (Top View)**



**Agency Approvals**

Icon	Description
<b>RoHS</b>	Compliance with 2011/65/EU
<b>HF</b>	Compliance with IEC61249-2-21:2003
	Mean lead free
	Compliance with UL497B, Certificated E232249

**Schematic Symbol**



**Electrical Parameter**

DC Breakdown Voltage <sup>1) 2)</sup>	100V/s	230±20%	V
Impulse Spark-over Voltage	At 1kV/μs	for 99 % of measured values	≤ 800
	At 1kV/μs	Typical values of distribution	≤ 750
Impulse Discharge Current <sup>3)</sup>	8/20μs ±5times	10,000	A
Arc Voltage	At 1A	~12	V
Insulation Resistance	DC=100V	≥1	GΩ
Capacitance at 1MHz <sup>4)</sup>	V <sub>DC</sub> =0.5V	≤0.45	pF
Weight		~0.8	g
Operating and storage Temperature		-40-90	°C
Marking		Without	

1) At delivery AQL 0.65 level II ISO 2859

2) In ionized mode

3) Terms and current waveforms in accordance with ITU-T Rec. K. 12; IEC 61643-21

4) Tested by Tonghui LCR meter

**Part Numbering System**

BW    XXX    M  
 (1)    (2)    (3)

(1) Bencent SMD Gas Discharge Tube in 7×6×6 (L×W×H) (mm)

(2) DC Breakdown Voltage, e.g., 231=23×10<sup>1</sup>=230V

(3) Tolerance is DC Breakdown Voltage, M=±20%, N=±30%

**Product Characteristics**

Lead Material	Copper
Body Material	Ceramics
Terminal Finish	100% Matte-Tin Plated

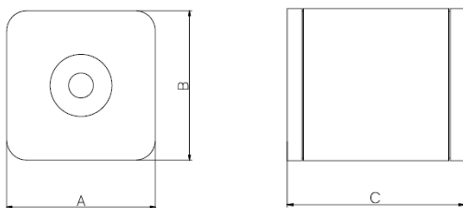
**Environmental Reliability Characteristics**

Testing items	Technical standards
High Temperature Storage Test	Temperature: 90°C Time: 2H
Low Temperature Storage Test	Temperature: -40°C Time: 2H
Vibration	Frequency: 10-500Hz Amplitude: 0.15mm Time: 45min
Resistance of soldering heat	Temperature: 260±5°C Time of dip soldering: 10s, 1times

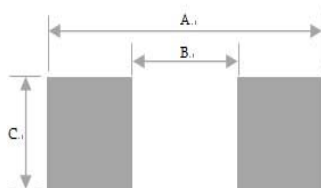
Note: Up-screen program can be specified by customer's request via contacting Bencent service

**Solderability test**

Solderability	Solder Pot Temperature:	245°C±5°C	Lead-Free Recommendation
	Solder Dwell Time:	4-6 seconds	

**Product Dimensions**


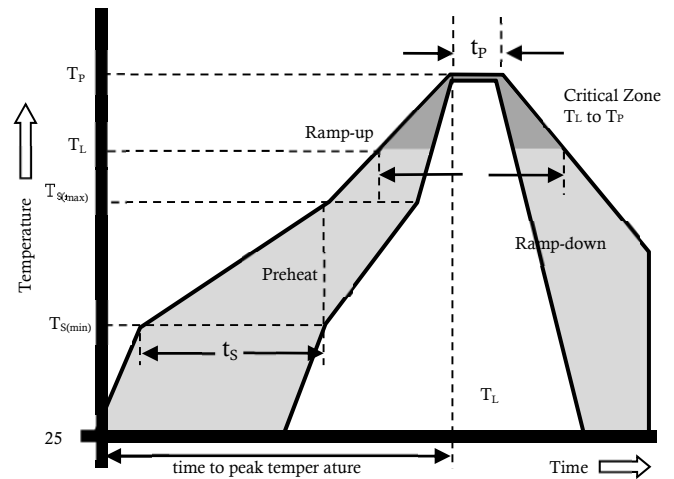
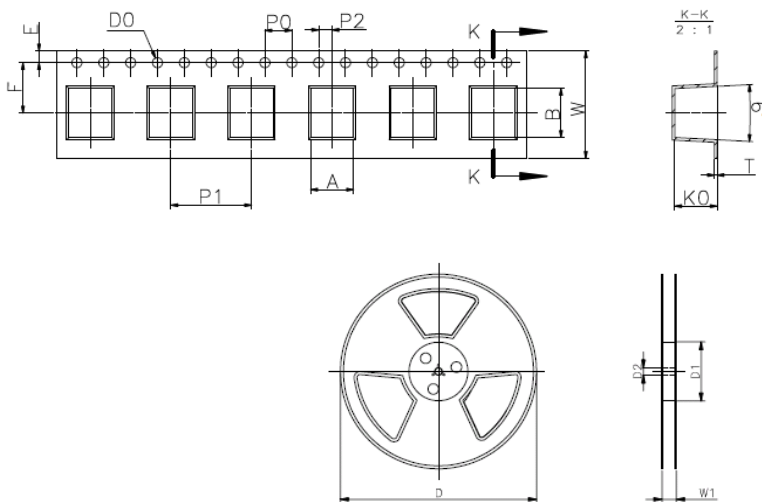
REF	Mm	inch
A	6±0.5	0.236±0.02
B	6±0.5	0.236±0.02
C	7±0.5	0.276±0.02

**Recommended soldering pad**


REF	Mm	inch
A	9	0.354
B	5	0.197
C	6.6	0.260

**Reflow Profile**

Reflow Condition		Pb-Free assembly
Pre Heat	Temperature Min	150°C
	Temperature Max	200°C
	Time (min to max)	60 – 180 secs
Average ramp up rate (Liquids) Tamp (T <sub>L</sub> ) to peal		3°C/second max
T <sub>S</sub> (max) to T <sub>L</sub> - Ramp-up Rate		3°C/second max
Reflow	- Temperature (T <sub>L</sub> ) (Liquids)	217°C
	- Temperature (T <sub>L</sub> )	60 – 150 seconds
Peak Temperature (T <sub>p</sub> )		260+0/-5 °C
Time within 5°C of actual peak Temperature (t <sub>p</sub> )		20 – 40 seconds
Ramp-down Rate		6°C/second max
Time 25°C to peak Temperature (T <sub>p</sub> )		8 minutes Max.
Do not exceed		260°C


**Package Reel Information**


REF	mm	inch
A	6.4±0.2	0.252±0.008
B	7.3±0.2	0.287±0.008
D0	1.5±0.2	0.059±0.008
E	1.75±0.2	0.069±0.008
F	7.5±0.2	0.295±0.008
P0	4±0.2	0.157±0.008
P1	12±0.5	0.472±0.020
P2	2±0.2	0.079±0.008
W	16±0.5	0.630±0.020
K0	6.3±0.2	0.248±0.008
T	0.4±0.05	0.016±0.002
D	Φ330±2	Φ12.99±0.079
D1	Φ100 <sup>+1</sup> <sub>-2</sub>	Φ3.94 <sup>+0.039</sup> <sub>-0.078</sub>
D2	Φ13±0.15	0.512±0.006
W1	16.5±0.4	0.65±0.016

**Package Box Information**

Outline	Reel (PCS)	INSIDE CARTON (PCS)	Per Carton (PCS)	Carton Size(mm)		
				L	W	H
Box	800	1600	12800	360	360	380

## X-ON Electronics

Largest Supplier of Electrical and Electronic Components

*Click to view similar products for* [Gas Discharge Tubes - GDTs / Gas Plasma Arrestors](#) *category:*

*Click to view products by* [Bencent](#) *manufacturer:*

Other Similar products are found below :

[PMT1023004](#) [PMT1025001](#) [RF3161-000](#) [PMT1035004](#) [PMT1040004](#) [PMT809006](#) [CG2250](#) [CG2800](#) [CG31.5L](#) [GT-SMD181240012-TR](#)  
[WPGT-2N145B6L](#) [WPGT-2N230B6L](#) [WPGT-2N470B6L](#) [WPGT-2R470B6L](#) [WPGT-2RM230A6L](#) [WPGT-2RM350A6L](#) [WPGT-](#)  
[2RM70A6L](#) [WPGT-2RM90A6L](#) [WPGT-2S145](#) [WPGT-2S350](#) [WPGT-2S470](#) [WPGT-3R350CF](#) [WPGT-3R350G1](#) [WPGT-3R90G1](#) [WPGT-](#)  
[3R75G1](#) [WPGT-3R470G1](#) [WPGT-3R250C](#) [WPGT-3R230G1](#) [WPGT-2S230](#) [WPGT-2RM470A6L](#) [WPGT-2RM145A6L](#) [WPGT-2R3000B8L](#)  
[WPGT-2R2700B8L](#) [WPGT-2R1000B8L](#) [WPGT-2N90B6L](#) [WPGT-2N70B6L](#) [WPGT-2N350B6L](#) [WPGT-2N230B6L1](#) [CG90](#) [CG2230](#)  
[CG2145](#) [CG21000](#) [GT-SMD181215012-TR](#) [9071.99.0547 \(73\\_Z-0-0-547\)](#) [B88069X6940B152](#) [V20-1+NPE-280](#) [V20-3+NPE+FS-280](#)  
[SD09-V24 9](#) [C50-0-255](#) [SG24PA300](#)