


**Features**

- Small Size Design EIA 1210 3.2×2.5×2.5mm
- Current Handling Capability 1,000A @ 8/20μ s
- Low Capacitance and Insertion Loss
- Fast Response and Long Service Life
- Reliable to Protect Electrostatic Surge
- Moisture sensitivity level: Level 1

**Application Information**

- Coaxial
- Ethernet

**Agency Approvals**

Icon	Description
<b>RoHS</b>	Compliance with 2011/65/EU
<b>HF</b>	Compliance with IEC61249-2-21:2003
	Mean lead free

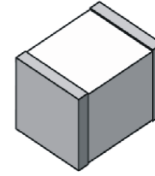
**Electrical Parameter**

DC Breakdown Voltage <sup>1)2)</sup>	100V/s	63-117	V
Impulse Spark-over Voltage	At 1kV/μs	for 99 % of measured values ≤ 700	V
	At 1kV/μs	Typical values of distribution ≤ 550	V
Impulse Discharge Voltage <sup>3)</sup>	10/700μs 10 operation[5×(+)&5×(-)]	6,000	V
	8/20μs 10 operation[5×(+)&5×(-)]	1,000	A
Arc Voltage	At 1A	~8	V
Insulation Resistance	DC=50V	≥1	GΩ
C(1MHz)	VDC=0.5V	≤0.5	pF
Weight		~0.094	g
Operating And Storage Temperature		-40-90	°C
Marking		Without	

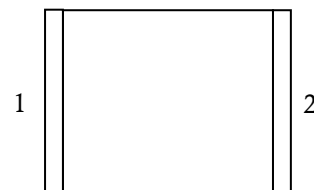
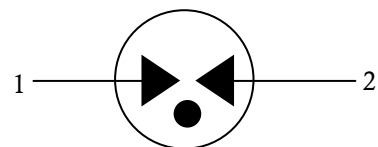
1) At delivery AQL 0.65 level II ISO 2859

2) In ionized mode

3) Terms and waveforms in accordance with ITU-T Rec. K. 12; IEC 61643-21

**Exterior**


SMD

**Package (Top View)**

**Schematic Symbol**


**Part Numbering System**

BZ 091 N

(1) (2) (3)

(1) Bencent Gas Discharge Tube

(2) Series: DC Breakdown Voltage,

e.g.: 091=9×101=90V

(3) Tolerance of DC Breakdown Voltage, M=+-20%,

N=+-30%, the Specific tolerance is decided by the

table of “Electrical Parameter”

**Product Characteristics**

Lead Material	Copper
Body Material	Ceramics
Terminal Finish	100% Matte-Tin Plated

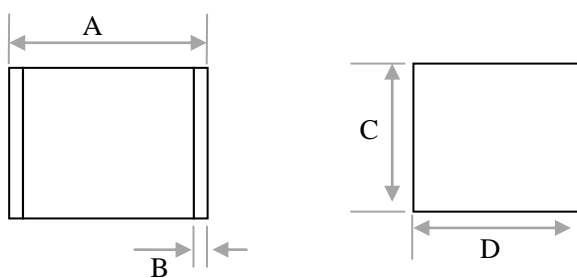
**Environmental Reliability Characteristics**

Testing items	Technical standards
High Temperature Storage Test	Temperature: 90°C Time: 2H
Low Temperature Storage Test	Temperature: -40°C Time: 2H
Vibration	Frequency: 10-500Hz Amplitude: 0.15mm Time: 45min
Resistance of soldering heat	Temperature: 260±5°C Time of dip soldering: 10s, 1time

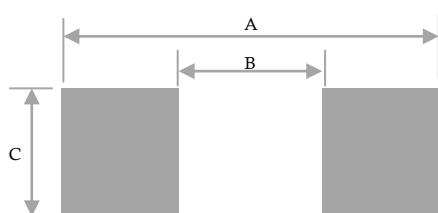
Note: Up-screen program can be specified by customer’s request via contacting Bencent service

**Solderability Test**

Solderability	Solder Pot Temperature:	245°C ± 5°C
	Solder Dwell Time:	4-6 seconds

**Product Dimensions**


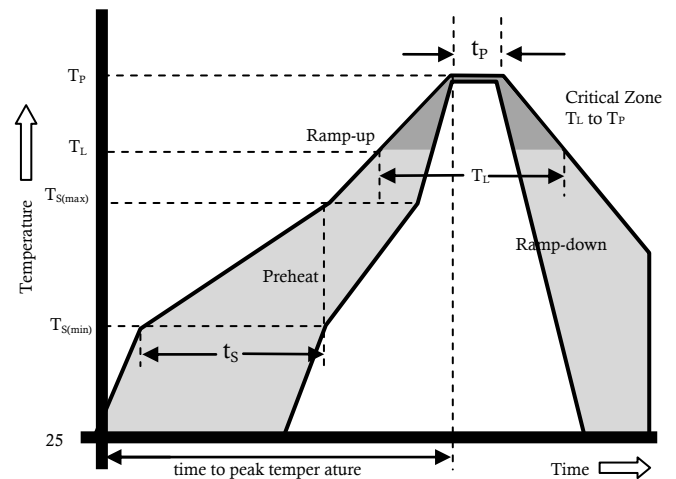
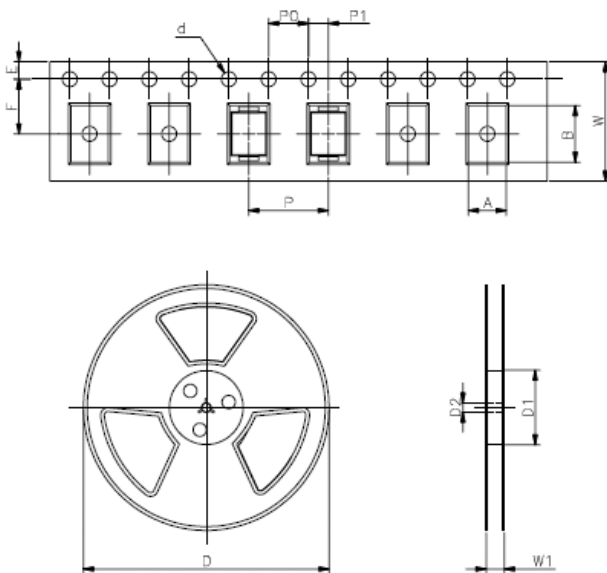
REF	mm	inch
A	3.2±0.3	0.126±0.013
B	0.3±0.2	0.013±0.008
C	2.5±0.2	0.098±0.008
D	2.5±0.2	0.098±0.008

**Recommended Soldering Pad**


REF	mm	inch
A	4.5	0.177
B	2.0	0.079
C	2.8	0.110

**Reflow Profile**

Reflow Condition		Pb-Free assembly
Pre Heat	Temperature Min	150 °C
	Temperature Max	200 °C
	Time (min to max)	60 – 180 secs
Average ramp up rate (Liquids) Tmp (T <sub>L</sub> ) to peal		3 °C/second max
T <sub>S</sub> (max) to T <sub>L</sub> - Ramp-up Rate		3 °C/second max
Reflow	- Temperature (T <sub>L</sub> ) (Liquids)	217 °C
	- Temperature (T <sub>L</sub> )	60 – 150 seconds
Peak Temperature (T <sub>P</sub> )		260+0/-5 °C
Time within 5 °C of actual peak Temperature (t <sub>p</sub> )		~10 seconds
Ramp-down Rate		6 °C/second max
Time 25 °C to peak Temperature (T <sub>P</sub> )		8 minutes Max.
Do not exceed		260 °C


**Package Reel Information**


REF	mm	inch
A	2.8±0.1	0.110±0.004
B	3.5±0.1	0.138±0.004
d	Φ 1.5±0.1	Φ 0.059±0.004
P0	4.0±0.1	0.157±0.004
P1	2.0±0.1	0.079±0.004
P	8.0±0.1	0.315±0.004
E	1.75±0.1	0.069±0.004
F	5.5±0.1	0.217±0.004
W	12.0±0.2	0.472±0.008
D	Φ 330.0	Φ 13.0
D1	Φ 50Min	Φ 1.97Min
D2	Φ 13±0.15	0.512±0.006
W1	16.8±2.0	0.661±0.079

Outline	Reel (PCS)	Per Carton (PCS)	Reel Diameter (mm)	Carton Size(mm)		
				L	W	H
TAPING	2,500	40,000	330	360	360	385

## X-ON Electronics

Largest Supplier of Electrical and Electronic Components

*Click to view similar products for* [Gas Discharge Tubes - GDTs / Gas Plasma Arrestors](#) *category:*

*Click to view products by* [Bencent](#) *manufacturer:*

Other Similar products are found below :

[PMT1023004](#) [PMT1025001](#) [RF3161-000](#) [PMT1035004](#) [PMT1040004](#) [PMT809006](#) [CG2250](#) [CG2800](#) [CG31.5L](#) [GT-SMD181240012-TR](#)  
[WPGT-2N145B6L](#) [WPGT-2N230B6L](#) [WPGT-2N470B6L](#) [WPGT-2R470B6L](#) [WPGT-2RM230A6L](#) [WPGT-2RM350A6L](#) [WPGT-](#)  
[2RM70A6L](#) [WPGT-2RM90A6L](#) [WPGT-2S145](#) [WPGT-2S350](#) [WPGT-2S470](#) [WPGT-3R350CF](#) [WPGT-3R350G1](#) [WPGT-3R90G1](#) [WPGT-](#)  
[3R75G1](#) [WPGT-3R470G1](#) [WPGT-3R250C](#) [WPGT-3R230G1](#) [WPGT-2S230](#) [WPGT-2RM470A6L](#) [WPGT-2RM145A6L](#) [WPGT-2R3000B8L](#)  
[WPGT-2R2700B8L](#) [WPGT-2R1000B8L](#) [WPGT-2N90B6L](#) [WPGT-2N70B6L](#) [WPGT-2N350B6L](#) [WPGT-2N230B6L1](#) [CG90](#) [CG2230](#)  
[CG2145](#) [CG21000](#) [GT-SMD181215012-TR](#) [9071.99.0547 \(73\\_Z-0-0-547\)](#) [B88069X6940B152](#) [V20-1+NPE-280](#) [V20-3+NPE+FS-280](#)  
[SD09-V24 9](#) [C50-0-255](#) [SG24PA300](#)