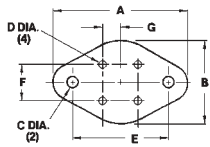


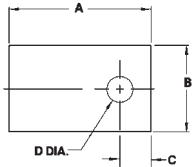
# Sil-Pad® Configurations

## Metric Measurements

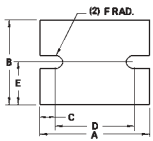


4 Lead TO-66	Part Number Suffix	"A"	"B"	"C"	Dimensions "D"				"E"	"F"	"G"
	-84	33.32	19.35	3.56	1.57	24.38	5.08	2.54			

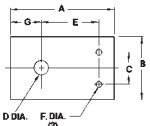
TO-220



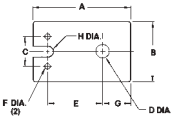
Plastic Power	Part Number Suffix	"A"	"B"	Dimensions "C"		"D"	Part Number Suffix	"A"	"B"	Dimensions "C"		"D"
Various (Clip Mount)	-35	18.03	12.70	4.06	3.58	Various	-104	25.40	19.05	7.62	3.56	
	-43	19.05	12.70				Various	-107	20.57	23.11	4.32	3.73
	TO-126	-50	11.10	7.92	3.56	2.36	Various	-110	24.99	19.99		
	Various	-51	17.45	14.27	5.54	3.18	Various	-114	21.01	24.00	5.00	3.81
	Various	-52	21.72	16.00	5.84	2.36	Various	-116	21.72	16.00	5.79	3.10
	TO-220	-54	19.05	12.70	4.75	3.73	Various	-117	21.01	18.01	6.50	3.20
	TO-202	-55	15.49	14.22	6.22	3.18	Various	-118	19.00	14.00	5.51	3.20
	Various	-56	21.72	14.27	5.54	3.18	Various	-119	11.10	7.90	3.61	2.79
	TO-220	-58	19.05	12.70	4.75	3.18	Various	-120	18.49	11.99	3.99	2.49
	TO-126	-60	11.10	7.92	3.56	3.10	TO-3P	-122	28.96	20.57	9.02	3.73
	Various	-61	19.05	10.41	5.72	3.96	Various	-126	24.00	19.00	6.50	4.11
	TO-220	-62	19.05	15.24	6.10	3.81	Various	-128	24.99	42.01	8.00	3.99
	Various	-63	19.05	15.24	6.10	2.92	Various	-131	18.01	13.00	4.50	3.10
	Various	-64	12.70	9.78	4.32	3.05	Various	-132	11.99	8.00	3.99	3.20
	TO-218	-68	28.58	15.88	5.08	3.68	Various	-133	22.00	18.01	6.50	3.20
	Various	-70	35.81	20.57	9.02	3.73	Various	-134	24.00	18.01	5.79	3.20
	Various	-90	21.84	18.80	5.08	4.06	Various	-136	31.75	25.40		
	Various	-102	22.00	16.51	5.51	3.61	Various	-137	31.75	25.40	6.55	3.23
	Various	-103	19.05	20.32	3.81	4.06	Various	-138	31.75	25.40	6.55	3.76



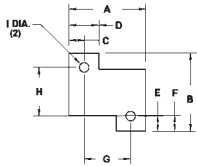
Power Module	Number Suffix	"A"	"B"	Dimensions "C"		"D"	"E"	"F"
	-67	38.10	22.86	3.81	30.48	11.43	1.90	
	-101	63.50	50.80	8.74	46.02	25.40	3.96	



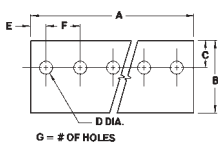
Plastic Power	Part Number Suffix	"A"	"B"	"C"	Dimensions "D"		"E"	"F"	"G"
	-57	23.11	12.70	5.08	3.18	14.73	1.17	6.73	
	-89	24.97	19.05	10.97	3.96	16.89	2.57	5.51	



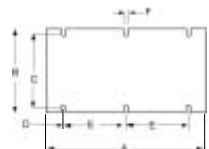
Plastic Power	Part Number Suffix	"A"	"B"	"C"	Dimensions "D"		"E"	"F"	"G"	"H"
	-66	25.40	12.70	5.08	3.58	15.90	1.17	5.56	0.81	



Power Resistors	Part Number Suffix	"A"	"B"	"C"	Dimensions "D"		"E"	"F"	"G"	"H"	"I"
RH-25	-94	30.15	30.61	5.94	11.91	5.38	3.96	18.26	19.84	3.56	
RH-50	-95	53.16	32.13	6.73	13.46	5.33	6.48	39.70	21.46	3.56	
RH-5	-96	18.42	19.58	3.56	7.11	3.56	3.96	11.30	12.47	2.36	
RH-10	-97	20.45	22.61	3.23	6.35	3.30	4.83	14.00	16.00	3.07	
RH-25	-98	29.21	29.97	5.87	10.80	4.83	6.86	17.48	20.32	3.73	
RH-50	-99	49.91	31.39	5.03	10.26	3.35	6.68	39.85	24.69	3.30	



TO-220 Multiples	Part Number Suffix	"A"	"B"	Dimensions "C"		"D"	"E"	"F"	# of Holes
2 Parts	-34	25.40	19.05	4.75	3.18	6.35	12.70	2	
3 Parts	-36	38.10	19.05	4.75	3.18	6.35	12.70	3	
	-37	50.80	19.05	4.75	3.18	6.35	12.70	4	
	-38	63.50	19.05	4.75	3.18	6.35	12.70	5	
	-39	76.20	19.05	4.75	3.18	6.35	12.70	6	
	-40	88.90	19.05	4.75	3.18	6.35	12.70	7	
	-41	101.60	19.05	4.75	3.18	6.35	12.70	8	

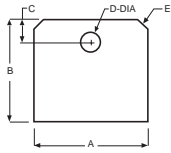


Power Module	Part Number Suffix	"A"	"B"	Dimensions "C"		"D"	"E"	"F"
	-108	116.84	60.96	53.97	12.70	45.72	3.18	
	-140	116.8	61.00	53.30	12.70	45.70	3.80	
	-141	57.90	61.00	53.40	12.40	16.50	3.80	
	-142	57.91	36.83	32.26	12.45	16.50	3.30	

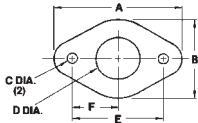
ORDERING

# Sil-Pad® Configurations

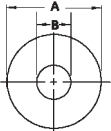
## Metric Measurements



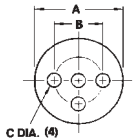
Part Number	Dimensions					
Suffix	"A"	"B"	"C"	"D"	"E"	
-124	22.15	20.07	4.06	3.76	3.0 x 45°	
-125	22.00	19.99	3.99	3.91	2.0 x 45°	



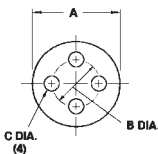
Part Number	Dimensions					
Suffix	"A"	"B"	"C"	"D"	"E"	"F"
-93	34.29	20.32	3.56	10.16	24.38	12.19



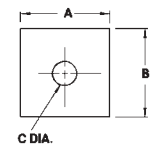
Part Number	Dimensions			Part Number	Dimensions		
Suffix	"A"	"B"	"C"	Suffix	"A"	"B"	
Various	-19	12.95	3.56	Various	-75	9.14	6.60
DO-4	-20	12.95	5.08	Various	-76	19.05	3.18
DO-5	-21	20.32	6.60	Various	-77	20.32	4.83
DO-4 (oversized)	-22	15.88	5.08	DO-8	-78	22.23	7.95
DO-5 (oversized)	-25	25.40	6.60	Various	-79	29.97	13.08
Various	-26	20.62	3.68	Various	-80	31.75	9.65
Various	-27	20.62	2.92	Various	-81	38.10	5.08
Various	-28	25.40	3.56	Various	-82	13.00	4.09
Various	-32	38.10	12.70	-111	15.01	5.51	



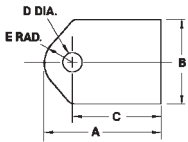
Part Number	Dimensions		
Suffix	"A"	"B"	"C"
-08	27.00	17.53	4.83



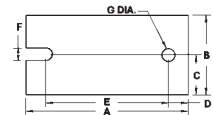
Part Number	Dimensions			
Suffix	"A"	"B"	"C"	
TO-5, 3 Holes	-09	9.14	5.08	1.02
TO-18, 3 Holes	-12	6.35	2.54	0.91
TO-18, 4 Holes	-13	6.35	2.54	0.91
TO-5, 4 Holes	-33	9.14	5.08	1.02
TO-5, 3 Holes	-44	9.91	5.08	1.02
TO-5, 4 Holes	-45	9.91	5.08	1.02



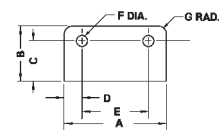
Part Number	Dimensions		
Suffix	"A"	"B"	"C"
-46	31.75	31.75	5.08
-47	28.58	28.58	3.56
-48	25.40	25.40	4.75



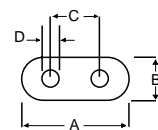
Part Number	Dimensions				"D"	"E"
Suffix	"A"	"B"	"C"	"D"	"E"	"F"
Clip Mount	-42	24.99	19.99			5.21
TIP-36 Plastic Tip	-53	21.97	16.51	16.51	3.56	5.21
TO-3P	-65	32.00	19.99	24.99	3.61	5.21
Plastic Clip	-73	24.99	19.99	17.98	3.61	5.21



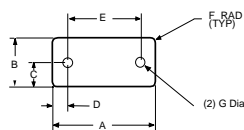
Part Number	Dimensions						
Suffix	"A"	"B"	"C"	"D"	"E"	"F"	"G"
-100	63.75	32.00	16.00	7.75	48.26	5.21	5.21
-123	41.00	27.99	14.00	3.99	30.99	3.00	3.00



Part Number	Dimensions						
Suffix	"A"	"B"	"C"	"D"	"E"	"F"	"G"
-105	36.83	21.29	15.54	6.22	24.38	4.32	3.05



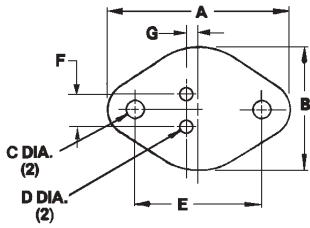
Part Number	Dimensions			
Suffix	"A"	"B"	"C"	"D"
-115	11.99	5.00	4.90	0.79



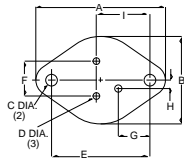
Part Number	Dimensions						
Suffix	"A"	"B"	"C"	"D"	"E"	"F"	"G"
-109	34.29	16.31	8.15	4.95	24.38	1.52	3.18

# Sil-Pad® Configurations

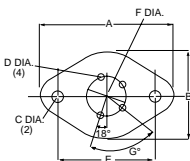
## Metric Measurements



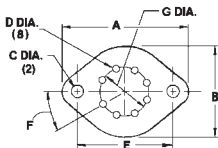
TO-3 Style	Part Number Suffix	"A"	"B"	"C"	Dimensions "D"		"E"	"F"	"G"
	-02	45.21	31.75	3.56	2.36		30.15	10.92	1.83
	-03	39.70	26.67	3.56	2.03		30.15	10.92	1.83
	-04	41.91	28.96	3.10	1.57		30.15	10.92	1.83
	-05	41.91	28.96	3.56	2.36		30.15	10.92	1.83
	-06	41.91	28.96	4.19	1.57		30.15	10.92	1.83
	-07	45.21	31.75	4.19	2.39		30.15	10.92	1.83
	-10	36.58	25.40	3.56	1.90		24.38	5.08	2.54
	-11	33.32	19.35	3.56	1.57		24.38	5.08	2.54
	-15	45.21	31.75	3.56	1.17		30.15	10.92	1.83
	-16	52.58	39.62	3.10	1.57		30.15	10.92	1.83
	-17	41.91	28.96	3.56	1.17		30.15	10.92	1.83
	-18	39.70	26.67	3.56	3.56		30.15	10.92	1.83
	-23	40.46	27.94	3.96	1.57		30.15	10.92	1.83
	-24	43.18	30.15	3.96	1.57		30.15	10.92	1.83
	-29	41.91	27.05	3.56	1.17		30.15	10.92	1.83
	-30	31.75	17.78	3.56	1.57		24.38	5.08	2.54
	-31	34.92	20.96	3.56	1.57		24.38	5.08	2.54
	-59 Leadless	41.91	28.96	4.19			30.15		
	-112	45.21	31.70	4.19	1.60		30.10	10.90	1.85
	-113	39.70	26.70	4.19	2.01		30.10	10.90	1.85
	-127	33.20	20.80	4.19	1.60		23.09	5.99	1.55
	-129	42.01	27.00	3.51	1.50		30.00	11.00	1.80
	-135	41.91	29.01	4.19	3.61		30.15	10.90	1.83



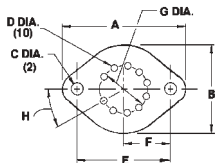
3 Lead TO-3	Part Number Suffix	"A"	"B"	"C"	Dimensions "D"		"E"	"F"	"G"	"H"	"I"
	-92	41.91	28.96	3.56	2.36		30.15	10.92	10.16	3.94	18.24



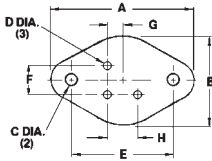
4 Lead TO-3	Part Number Suffix	"A"	"B"	"C"	"D"	"E"	"F"	"G"
	-86	39.62	26.67	3.96	2.03	29.72	11.94	72°
	-87	39.70	26.67	3.96	1.60	30.15	11.94	72°



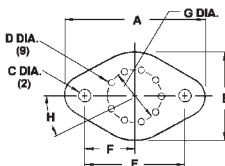
8 Lead TO-3	Part Number Suffix	"A"	"B"	"C"	"D"	"E"	"F"	"G"
	-88	42.04	30.15	3.96	1.52	30.15	40°	12.70



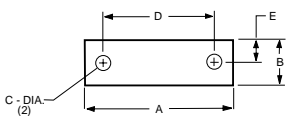
10 Lead TO-3	Part Number Suffix	"A"	"B"	"C"	"D"	"E"	"F"	"G"	"H"
	-91	41.91	28.96	4.19	1.02	30.15	15.06	12.70	32.7°



3 Lead TO-66	Part Number Suffix	"A"	"B"	"C"	"D"	"E"	"F"	"G"	"H"
	-85	32.38	19.05	3.96	2.54	24.38	5.08	2.54	5.08



9 Lead TO-66	Part Number Suffix	"A"	"B"	"C"	"D"	"E"	"F"	"G"	"H"
	-83	36.58	25.40	3.56	1.40	24.38	12.19	8.26	36°



Power Module	Part Number Suffix	"A"	"B"	"C"	"D"	"E"
	-130	40.64	12.19	4.19	30.40	6.10

## X-ON Electronics

Largest Supplier of Electrical and Electronic Components

*Click to view similar products for [bergquist company manufacturer](#):*

Other Similar products are found below :

[SIL-PAD 2000 150MMX150MM SHEET](#) [GP2000S40-0.040-02-4/4](#) [GPEMI1.0-0.060-01-0816](#) [SPA2000-0.020-00-1012](#) [TGP6000ULM-0.125-12-0816](#) [803265](#) [GPEMI1.0-0.040-01-0816](#) [GP3500ULM-G-0.100-12-0816](#) [TGP12000ULM-0.080-00-0808](#) [GP1500-0.160-02-0816](#) [TGP3000ULM-0.080-02-0816](#) [SIL-PAD K6 300MMX300MM SHEET](#) [GP1500-0.200-02-0816](#) [SP980-0.009-00-1212](#) [GPEMI1.0-0.100-01-0816](#) [GPA3000-0.125-01-0816](#) [TGP12000ULM-0.100-00-0808](#) [TGP12000ULM-0.060-00-0808](#) [TGP3000ULM-0.120-02-0816](#) [803263](#) [GP1000SF-0.100-02-0816](#) [GPHC1000-0.010-02-0816](#) [GP1500S30-0.100-02-0816](#) [LF2000-00-00-30CC](#) [TGP3000ULM-0.100-02-0816](#) [TGP12000ULM-0.125-00-0808](#) [803269](#) [2015-54](#) [GPVOUS-0.080-00-4/4](#) [SP1200-0.016-AC-1212](#) [HF625-0.005-AC-1212](#) [SPA1500-0.010-00-4/4](#) [GP1500S30-0.250-02-0816](#) [SPA2000-0.015-AC-1012](#) [GP3500ULM-G-0.080-12-0816](#) [GPVO-0.160-01-0816](#) [GP1500S30-0.125-02-0816](#) [BP660P-0.008-00-1112](#) [LF3800LVO-00-150CC](#) [803790](#) [803266](#) [BP100-0.005-00-1/1](#) [SP1200-0.012-AC-1212](#) [SP1500ST-0.012-02-1012](#) [GP3500ULM-0.100-02-0816](#) [GF2000-00-600-50CC](#) [803262](#) [GPVOUS-0.160-AC-0816](#) [GPVOUS-B-0.040-01-0816](#) [803268](#)