

## VDE TOOLS

### ▶ Adjustable spanner

According to DIN 3117, IEC 60900:2004, two-colour multilayer dip insulation, 1000 V, jaw position 15°, with scale graduation

| Art.-No.   | Width across flats | Weight in g | 1000 V |
|------------|--------------------|-------------|--------|
| 16-773 VDE | 0-26               | 300         | ⚡      |
| 16-774 VDE | 0-30               | 500         | ⚡      |
| 16-775 VDE | 0-35               | 800         | ⚡      |



### ▶ Insulating protective gloves

for work under voltage up to 1000 Volt, made of natural latex high elasticity piece tested according to DIN EN 60903, VDE 0682-part 311, test voltage 5000 Volt

| Art.-No.   | Type     | Thickness | Length      | Weight in g | 1000 V |
|------------|----------|-----------|-------------|-------------|--------|
| 17-501 VDE | Größe 10 | 1.6 mm    | 360 ± 15 mm | 175         | KL. 0  |



17-501 VDE

### ▶ NH plug-in-grip

with leather cuff 380 x 220 mm for inserting or removing NH fuse links

| Art.-No.   | Type   | Weight in g | 1000 V |
|------------|--|-------------|--------|
| 17-521 VDE | Siemens-handle for NH fuses 00-3, protection of forearm at higher currents (arc fault due to system) | 450         | ⚡      |



17-521 VDE

### ▶ Rubber cover, red

DIN EN 61112 / VDE 0682-511, smooth surface, for work on electrical installations

| Art.-No.   | Type           | Thickness | Weight in g | 1000 V   |
|------------|----------------|-----------|-------------|----------|
| 17-702 VDE | 500 x 500 mm   | 1.6 mm    | 590         | ⚡ GS D'E |
| 17-703 VDE | 1000 x 1000 mm | 1.6 mm    | 1936        | ⚡ GS D'E |



17-703 VDE

### ▶ VDE rubber mat / floor mat, grey

Surface one side smooth and one side slip-resistant, frost-resistant, according to REACH, free of nitrosamine and PAH.

For the removal and installation of side insulation in electrical systems.

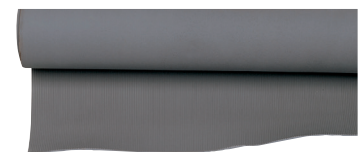
**Not for mobile use as PSA accessory!**

| Art.-No.   | Type                              | Weight in g | 1000 V |
|------------|-----------------------------------|-------------|--------|
| 17-707 VDE | 1000 x 1000 x 4,5 mm DIN VDE 0303 | 5400        | -      |

To be used for mobile side insulation according to BGR A3!

**Not to be used as flooring material!**

| Art.-No.   | Type                                     | Weight in g | 1000 V   |
|------------|--|-------------|----------|
| 17-706 VDE | 1500 x 1000 x 3,0 mm DIN 6111 / VDE 0680 | 4850        | ⚡ GS D'E |



17-706 VDE

NEW

### ▶ Plastic clip

for fixing cover cloths, made of sturdy plastic with concealed spring and rubber web to prevent slipping

| Art.-No.   | Type                                      | Length | Weight in g | 1000 V |
|------------|---|--------|-------------|--------|
| 17-523 VDE | Clamping width 15 mm, opening width 40 mm | 160 mm | 60          | ⚡      |



17-523 VDE

### ▶ Self-clamping sleeves

Protect against contact with a live cable end

| Art.-No.   | Type          | Weight in g | 1000 V |
|------------|---------------|-------------|--------|
| 17-551 VDE | Ø 10 x 80 mm  | 20          | ⚡      |
| 17-552 VDE | Ø 20 x 85 mm  | 30          | ⚡      |
| 17-553 VDE | Ø 30 x 100 mm | 60          | ⚡      |



17-552 VDE

## VOLTAGE TESTER

### ▶ 17-531 VDE

#### VDE voltage tester Steinel Volt Check 3

DIN EN 61243-3, DIN CDE 0682, Teil 401, IEC 61010

This voltage tester can be used universally and is built according to the latest safety regulations and guarantees safe and reliable operation. The voltage tester features the following functions: Voltage testing up to 690 V AC/DC phase - phase, automatic AC/DC detection, bright LED display, robust, ergonomically shaped housing for good handling, captive measuring tip shoe.

Weight: 110 g



17-531 VDE

### ▶ 4-344 VDE

#### VDE voltage tester slot blade 3.5 x 0.7 x 110 mm

VDE voltage tester 220 - 250 V, according to DIN VDE 0680 part 6: 1977-04.

Blade: chrome vanadium, nickel-plated, fully insulated, handle: transparent plastic.

Length: 196 mm, weight: 31 g



4-344 VDE

### ▶ 4-343 VDE

#### VDE voltage tester slot blade 3.0 x 0.7 x 60 mm

VDE voltage tester 220 - 250 V, according to DIN VDE 0680 part 6: 1977-04.

Blade: chrome vanadium, nickel-plated, fully insulated, handle: transparent plastic.

Length: 136 mm, weight: 20 g



4-343 VDE

## VDE CABLE CUTTING TOOLS

### ▶ Cable knives, dismantling knives

Stainless steel blade, with protective blade cap, impact-resistant plastic handle

| Art.-No.   | Type                       | Blade length | Total length | Weight in g | 1000 V |
|------------|----------------------------|--------------|--------------|-------------|--------|
| 15-521 VDE | Straight blade             | 50 mm        | 180          | 66          |        |
| 15-522 VDE | Hook blade                 | 35 mm        | 180          | 66          |        |
| 15-523 VDE | Special blade + slide foot | 35 mm        | 180          | 73          |        |



15-521 VDE



15-522 VDE



15-523 VDE

### ▶ Automatic wire stripper with stop screw

For common flexible and solid conductors (von 0,2 - 6,0 mm<sup>2</sup>)

Adjustable, removable length stop from 5 - 12 mm

| Art.-No.   | Type  | Total length | Weight in g | 1000 V |
|------------|---|--------------|-------------|--------|
| 15-531 VDE | glass fibre reinforced plastic, fully insulated | 200          | 110         |        |



15-531 VDE

### ▶ Metal saw bow

Strong die-cast aluminium frame, two-colour multilayer dip insulation

| Art.-No.   | Type  | Total length | Weight in g | 1000 V |
|------------|---|--------------|-------------|--------|
| 17-541 VDE | Saw blade (150 mm) interchangeable                | 270          | 180         |        |
| 17-547 VDE | Saw blade (300 mm) interchangeable hardened teeth | 460          | 580         |        |



17-541VDE

## X-ON Electronics

Largest Supplier of Electrical and Electronic Components

*Click to view similar products for PPE Safety Equipment / Lockout Tagout category:*

*Click to view products by Bernstein manufacturer:*

Other Similar products are found below :

[AB12-SF1260](#) [GPSL-6KA](#) [GPSL-8MKEY](#) [35035](#) [702201756](#) [PSL-PC38-33](#) [7100078986](#) [132231](#) [44-809](#) [G3000NUV-VI-R](#) [STC1165](#)  
[STC5951](#) [DAF010701](#) [WC000003](#) [509-0015](#) [509-0017](#) [509-0019](#) [509-0020](#) [509-0021](#) [509-0022](#) [509-0002](#) [509-0003](#) [509-0004](#) [509-0006](#)  
[109-0920](#) [109-0917](#) [109-0918](#) [109-0919](#) [DYC200-01-01-9-DYCLEAN-S](#) [109-0027](#) [X2A](#) [26702](#) [28774](#) [SFTY PADLOCK NYLON 38MM](#)  
[SHA YELLOW 6/PAC](#) [FMB12](#) [FMB14](#) [FMB14 MIDI](#) [FMB18](#) [FMB38](#) [FMFR 12](#) [FMFR 12-AUT](#) [FMFR 14](#) [FMFR 14 MIDI](#) [FMFR 18](#)  
[FMFR 38](#) [FML 12](#) [FML 14](#) [FML 14 MIDI](#) [FML 18](#) [FMR 12](#)