

Tool name: Exchangeable steel insert for shielded RJ45 8P8C modular plugs

Tool code: U751

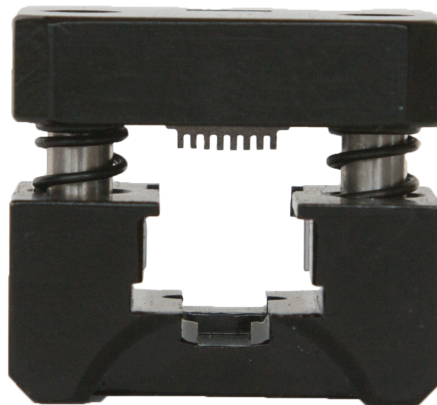
Applicable tool: K750 crimp hand tool frame

Country of origin: Croatia (EU)

Customs tariff number: 82079091

FEATURES

- Exceptional precision and accuracy of all elements.
- All parts of inserts are made of very high quality hardened steel.
- Constant high quality and outstanding characteristics of crimped connections.
- Very large number of crimping.
- Reliable meeting of all required end tolerances of crimped connections



TECHNICAL DATA

Type	Length [mm]	Width [mm]	Height [mm]	Weight [g]
U750	32	22	28	100

APPLICABLE CONNECTORS

Plug description	No. of contacts	Plug code
STEWART CONN 8C/8P shielded plug for solid or stranded conductor	8 STP	937-SP-360808-A108
STEWART CONN 8C/8P shielded plug for solid or stranded conductor	8 STP	937-SP-360808-A161
STEWART CONN 8C/8P shielded plug for solid or stranded conductor	8 STP	937-SP-360808-A218
STEWART CONN 8C/8P shielded plug for solid or stranded conductor	8 STP	940-SP-360808-031-A108
STEWART CONN 8C/8P shielded plug for solid or stranded conductor	8 STP	940-SP-360808-031-A221
STEWART CONN 8C/8P shielded plug for solid or stranded conductor	8 STP	940-SP-360808-A10
STEWART CONN 8C/8P shielded plug for solid or stranded conductor	8 STP	940-SP-360808-A108
STEWART CONN 8C/8P shielded plug for solid or stranded conductor	8 STP	940-SP-360808-A161
STEWART CONN 8C/8P shielded plug for solid or stranded conductor	8 STP	940-SP-360808-A217
STEWART CONN 8C/8P shielded plug for solid or stranded conductor	8 STP	940-SP-360808-A218
STEWART CONN 8C/8P shielded plug for solid or stranded conductor	8 STP	940-SP-360808-A233

STEWART CONN 8C/8P shielded plug for solid or stranded conductor	8 STP	943-SP-370808SM2
STEWART CONN 8C/8P shielded plug for solid or stranded conductor	8 STP	943-SP-370808SM2-A10
STEWART CONN 8C/8P shielded plug for solid or stranded conductor	8 STP	943-SP-370808SM2-A217
STEWART CONN 8C/8P shielded plug for solid or stranded conductor	8 STP	943-SP-370808SM2-A218
STEWART CONN 8C/8P shielded plug for solid or stranded conductor	8 STP	943-SP-370808SM2-A233
STEWART CONN 8C/8P shielded plug for solid or stranded conductor	8 STP	943-SP-370808SM2-A264
STEWART CONN 8C/8P shielded plug for solid or stranded conductor	8 STP	943-SP-370808SM2-A278
Bomar Interconnect	Modular Connectors / Ethernet Connectors CAT6 RJ45 MOD PLUG	300668EZ
AIM-Cambridge / Emerson Connectivity Solutions	Modular Connectors / Ethernet Connectors RJ45 8P8C CAT5 ROUND STRANDED CABLE	32-2098UL



X-ON Electronics

Largest Supplier of Electrical and Electronic Components

Click to view similar products for [Crimpers](#) category:

Click to view products by [Bex](#) manufacturer:

Other Similar products are found below :

[576771-1](#) [576788-2](#) [010-0041](#) [010-0055](#) [010-0096](#) [604228-1](#) [M225202-37](#) [CT150-2-D02](#) [CT150-4-LY2](#) [CT150-6-RH07](#) [M322](#) [63484-3701](#)
[63800-0140](#) [63800-8355](#) [63811-3275](#) [63811-3376](#) [63811-6375](#) [63811-6475](#) [63811-7875](#) [63811-8175](#) [63811-8875](#) [63819-0475](#) [63819-1875](#)
[63819-2875](#) [63819-4375](#) [63819-4475](#) [63823-3475](#) [63823-5175](#) [63823-6375](#) [63823-8375](#) [63827-5375](#) [64001-0975](#) [64001-2175](#) [64001-4175](#)
[662903-2](#) [690142-4](#) [690602-6](#) [D38999/20WA98JB-LC](#) [7-1633664-2](#) [7-22278-0](#) [7-22280-5](#) [7-240641-3](#) [762637-1](#) [808714-1](#) [8-1633117-3](#)
[853721-6](#) [91362-1](#) [995-0001-187](#) [1-1633932-5](#) [999-50-020083](#)