

Tool name: Exchangeable steel insert for shielded 8P8C modular plugs with additional sub-inserts for ferrule crimping

Tool code: U752

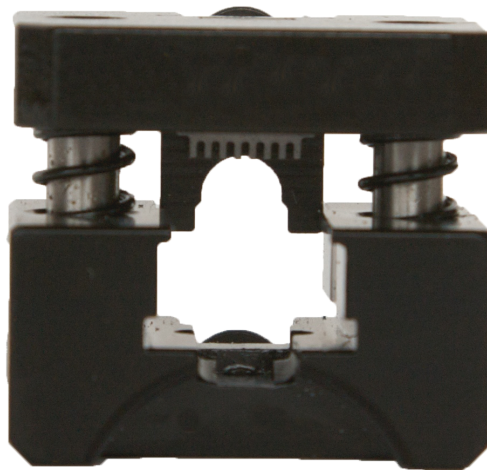
Applicable tool: K750 crimp hand tool frame

Country of origin: Croatia (EU)

Customs tariff number: 82079091

FEATURES

- Exceptional precision and accuracy of all elements.
- All parts of inserts are made of very high quality hardened steel.
- Constant high quality and outstanding characteristics of crimped connections.
- Very large number of crimping.
- Reliable meeting of all required end tolerances of crimped connections



TECHNICAL DATA

Type	Length [mm]	Width [mm]	Height [mm]	Weight [g]
U752	32	22	28	110

Note: Combi die set U752 accepts ferrule insert, order ferrule insert separately to suit cable O/D

Ferrule insert code	Outer cable dimension	Applicable die set	No. of contacts
---------------------	-----------------------	--------------------	-----------------

U7521	Max. 3.7 mm	U752	8 STP
U7522	Max. 4.5 mm	U752	8 STP
U7523	Max. 5.2 mm	U752	8 STP
U7524	Max. 6.00 mm	U752	8 STP



X-ON Electronics

Largest Supplier of Electrical and Electronic Components

Click to view similar products for [Crimpers](#) category:

Click to view products by [Bex](#) manufacturer:

Other Similar products are found below :

[576771-1](#) [576788-2](#) [010-0041](#) [010-0055](#) [010-0096](#) [604228-1](#) [M225202-37](#) [CT150-2-D02](#) [CT150-4-LY2](#) [CT150-6-RH07](#) [M322](#) [63484-3701](#)
[63800-0140](#) [63800-8355](#) [63811-3275](#) [63811-3376](#) [63811-6375](#) [63811-6475](#) [63811-7875](#) [63811-8175](#) [63811-8875](#) [63819-0475](#) [63819-1875](#)
[63819-2875](#) [63819-4375](#) [63819-4475](#) [63823-3475](#) [63823-5175](#) [63823-6375](#) [63823-8375](#) [63827-5375](#) [64001-0975](#) [64001-2175](#) [64001-4175](#)
[662903-2](#) [690142-4](#) [690602-6](#) [D38999/20WA98JB-LC](#) [7-1633664-2](#) [7-22278-0](#) [7-22280-5](#) [7-240641-3](#) [762637-1](#) [808714-1](#) [8-1633117-3](#)
[853721-6](#) [91362-1](#) [995-0001-187](#) [1-1633932-5](#) [999-50-020083](#)