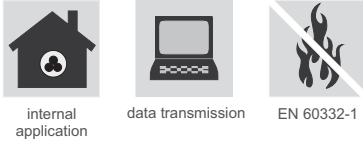
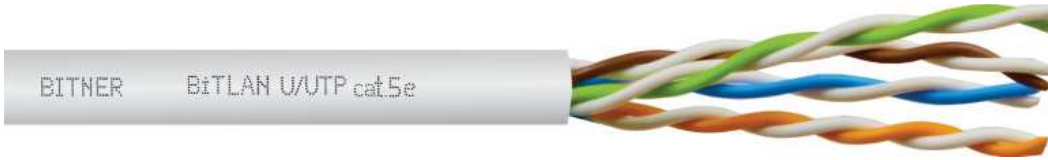


# BiTLAN U/UTP cat.5e 200 MHz



Data transmission cable



## Technical data:

### Temperature range:

Operating temperature: -30°C to +70°C

Min. installation temp: -10°C

**Bending radius:** 4xØ

**Conductor diameter:** 0,5±0,015mm

**Insulated core diameter:** 0,86±0,05mm

**DC loop resistance at 20°C (max):** 190Ω/km

**Insulation resistance (min):** 5GΩxkm

**Resistance unbalance:** ≤2%

**Capacitance at 1 kHz:** 50±5nF/km

**Capacitance unbalance at 1kHz (max):** 1600pF/km

**Nominal voltage:** 150V

**Test voltage:**

AC 50 Hz: 700V

DC: 1000V

**Characteristic impedance:** 100±5Ω

**NVP value:** 69%

**Return loss (min):**

f = 4÷10MHz: 20+5lg(f)

f = 10÷20MHz: 25

f = 20÷200MHz: 25-7lg(f/20)

## Construction:

**Conductors:** solid round copper conductors

**Insulation:** special polyolefin compound

**Core identification:** wh/bu-bu, wh/or-or, wh/gn-gn, wh/bn-bn

**Core arrangement:** cores twisted in pairs, pairs twisted together

**Outer sheath:** special PVC

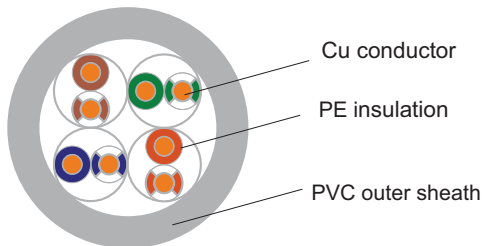
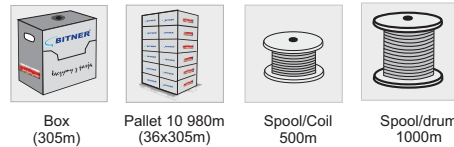
**Outer sheath colour:** grey RAL 7035 other colours available on customer's request

**Marking:** BITNER BiTLAN U/UTP 4x2x24AWG(0,5) cat.5e 200MHz EN 50173-1 ISO/IEC 11801 ANSI/TIA 568-C.2 ID no. CE RoHS [www.bitner.com.pl](http://www.bitner.com.pl) meters

## Application:

BiTLAN U/UTP cat. 5e cables are applicable to computer networks with operating frequency band up to 200MHz. Suitable for transmission of data, audio and video signals with bitrate up to 1 Gb/s. Dedicated for fixed installations within indoor structured cabling systems as per EN 50173-1, ISO/IEC 11801, ANSI/TIA 568-C.2 standards, as well as within industrial networks not exposed to external electromagnetic interferences. Cables classified according to **EN 50575 (CPR)**.

## Packaging:



Cu conductor

PE insulation

PVC outer sheath

Cat. no	Construction	Cu wire	O.D. [mm]	CPR classification EN 50575	Cu [kg/km]	Cable weight [kg]	Bandwidth [MHz]
TI0006	U/UTP cat.5e	24AWG	4,8	Eca	15	28	200

Cable Factory BITNER reserves the right to modify the specifications without prior notice

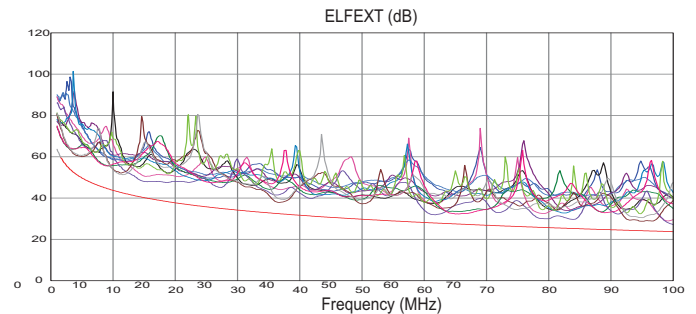
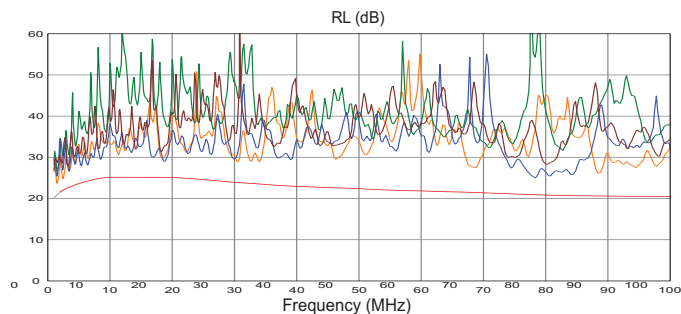
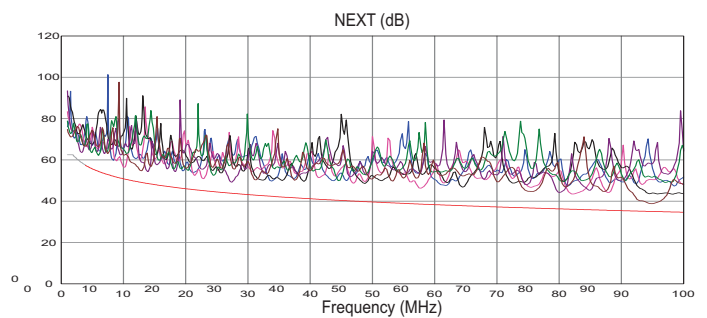
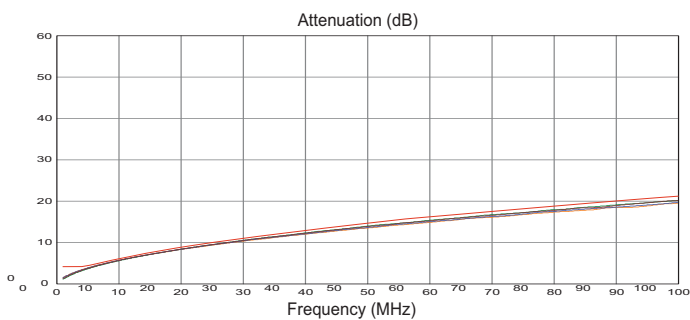
# BiTLAN U/UTP cat.5e 200 MHz

Data transmission cable

## Performance test charts and data:

Frequency MHz	1	4	10	16	20	30	45	60	80	100	120	130	155	175	200
Attenuation $\leq$ dB/100m	2,1	4,0	6,3	8,0	9,0	11,2	13,9	16,2	18,9	21,3	23,6	24,7	27,2	29,2	31,5
NEXT $\geq$ dB/100m	65,3	56,3	50,3	47,2	45,8	43,1	40,5	38,6	36,7	35,3	34,1	33,6	32,4	31,6	30,8
PS NEXT $\geq$ dB/100m	62,3	53,3	47,3	44,2	42,8	40,1	37,5	35,6	33,8	32,3	31,1	30,6	29,5	28,6	27,8
ELFEXT $\geq$ dB/100m	63,8	51,8	43,8	39,7	37,8	34,3	30,7	28,2	25,7	23,8	22,2	21,5	20,0	19,0	17,8
PS ELFEXT $\geq$ dB/100m	60,8	48,8	40,8	36,7	34,8	31,3	27,7	25,2	22,7	20,8	19,2	18,5	17,0	16,0	14,8
RL $\geq$ dB	20,0	23,0	25,0	25,0	25,0	23,8	22,5	21,7	20,8	20,1	19,5	19,3	18,8	18,4	18,0

## Transmission parameters graphs - examples of measurement results



## X-ON Electronics

Largest Supplier of Electrical and Electronic Components

*Click to view similar products for [Ethernet Cables / Networking Cables](#) category:*

*Click to view products by [BITNER](#) manufacturer:*

Other Similar products are found below :

[0152660053](#) [603020002](#) [73-7797-25](#) [73-8890-10](#) [73-8890-14](#) [73-8891-14](#) [73-8891-25](#) [73-8892-50](#) [73-8894-10](#) [73-8894-3](#) [73-8895-14](#) [73-8896-7](#) [MCJB2-10P6Q7-120](#) [84909-0204](#) [9QA0-111-12-3.00](#) [1200650742](#) [1200700174](#) [1200860368](#) [1200650013](#) [1201080008](#) [1-21919-1](#) [1300500373](#) [1300101844](#) [1300101845](#) [130050-0004](#) [1300500014](#) [1410147](#) [E16A06002M030](#) [E200102-009-S1](#) [MT14-187L](#) [17-103530](#) [NK5EPC18RDY](#) [NK5EPC18VLY](#) [NK5EPC18YLY](#) [NK5EPC1GRY](#) [NK5EPC30BLY](#) [NK5EPC30VLY](#) [NK5EPC30YLY](#) [NK5EPC4Y](#) [NK5EPC6YLY](#) [NK5EPC8BLY](#) [NK5EPC9YLY](#) [NK6PC30BUY](#) [NK6PC30GRY](#) [NK6PC30RDY](#) [NK6PC30Y](#) [NK6PC30YLY](#) [1969343-6](#) [C501100010](#) [C501106002](#)