

# BiTLAN U/FTP cat.6A LSOH

## 500 MHz

Halogen-free, data transmission cable, screened



internal application



EN 60332-1



data transmission



halogen-free  
EN 60754



low smoke emission  
EN 61034



RoHS 2011/65/EU



LVD 2014/35/EU



CPR 305/2011



2 years warranty

## Technical data:

### Temperature range:

Operating temperature: -30°C to +70°C

Min. installation temp: -10°C

**Bending radius:** 6xØ

**Conductor diameter:** 0,57±0,015mm

**Insulated core diameter:** 1,3±0,01mm

**DC loop resistance at 20°C (max):** 145Ω/km

**Insulation resistance (min):** 5GΩxkm

**Resistance unbalance:** ≤2%

**Capacitance at 1 kHz:** 45±5nF/km

**Capacitance unbalance at 1kHz (max):** 1600pF/km

**Nominal voltage:** 150V

**Test voltage - 1min:**

AC 50 Hz: 700V

DC: 1000V

**Characteristic impedance:** 100±5Ω

**NVP value:** 77%

**Return loss (min):**

f = 4÷10MHz: 20+5lg(f)

f = 10÷20MHz: 25

f = 20÷350MHz: 25-7lg(f/20)

**Coupling attenuation within the range of 30÷100 MHz (min.):** 55dB

**Transfer impedance at 10 MHz (max):** 100mΩ/m

## Construction:

**Conductors:** solid round copper conductors

**Insulation:** special polyolefin compound

**Core identification:** wh/bu-bu, wh/or-or, wh/gn-gn, wh/bn-bn

**Core arrangement:** cores twisted in pairs, screened pairs twisted together

**Screen:** aluminium backed polyester tape on every pair and tinned copper drain wire

**Outer sheath:** special LSOH compound

**Outer sheath colour:** orange RAL 2003

**Marking:** BITNER BiTLAN U/FTP 4x2x23AWG cat.6A 500MHz LSOH  
EN 50173-1 ISO/IEC 11801 ANSI/TIA 568-C.2 ID no. CE RoHS  
[www.bitner.com.pl](http://www.bitner.com.pl) meters

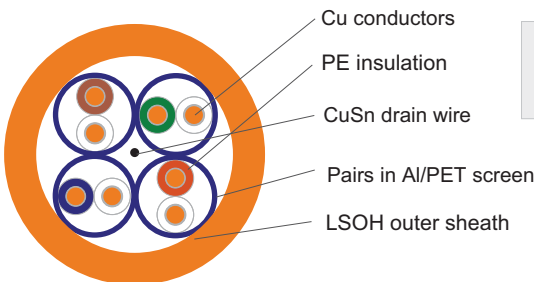
## Application:

BiTLAN U/FTP cat.6A LSOH cables are applicable to computer networks with operating frequency band up to 500MHz. Suitable for transmission of data, audio and video signals, with bitrate up to 10Gb/s. Additional individual Al/Pet screen with CuSn drain wire acts as a protection against external electromagnetic interferences. Dedicated for fixed installations within indoor structured cabling systems as per EN 50173-1, ISO/IEC 11801, ANSI/TIA 568-C.2 standards, as well as within industrial networks exposed to external electromagnetic interferences.

Cables with flame retardant LSOH outer sheath ensuring low smoke emission acc. to EN 50268-2, IEC 61034-2 and limited emission of corrosive gases acc. to EN 60754-2, IEC 60754-2. should be installed in places with increased fire safety requirements.

Cables classified according to **EN 50575 (CPR)**.

## Packaging:



Spool/Coil  
500m



Spool/drum  
1000m

Cat. no	Construction	Cu wire	O.D. [mm]	CPR classification EN 50575	Cu [kg/km]	Cable weight [kg]	Bandwidth [MHz]
TI0079	U/FTP cat.6A LSOH	23AWG	7,5	Dca-s2,d0,a1	22	55	500

Cable Factory BITNER reserves the right to modify the specifications without prior notice

# BiTLAN U/FTP cat.6A LSOH

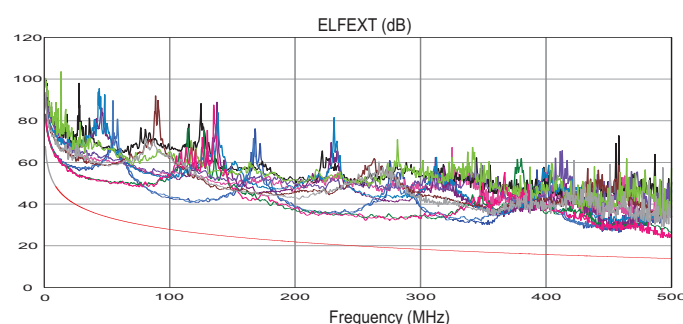
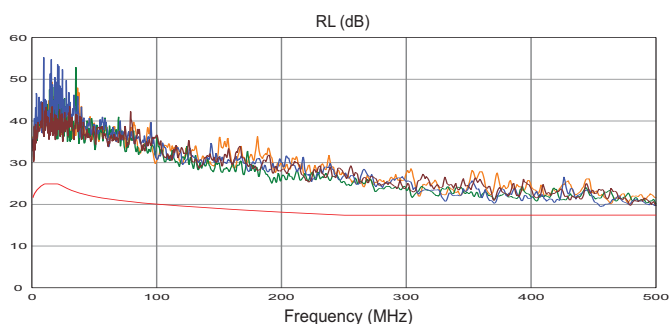
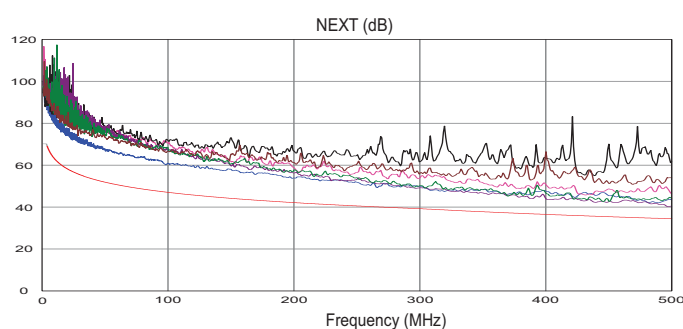
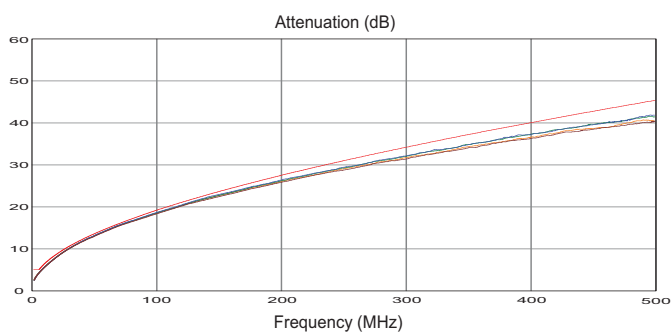
## 500 MHz

Halogen-free, data transmission cable, screened

### Performance test charts and data:

Frequency MHz	1	4	10	16	20	31,25	62,5	100	125	155	175	200	250	300	500
Attenuation $\leq$ dB/100m	2,1	3,8	5,9	7,5	8,4	10,5	15,0	19,1	21,5	24,1	25,7	27,6	31,1	34,3	45,3
NEXT $\geq$ dB/100m	75,3	66,3	60,3	57,2	55,8	52,9	48,4	45,3	43,8	42,4	41,7	40,8	39,3	38,1	34,8
PS NEXT $\geq$ dB/100m	72,3	63,3	57,3	54,2	52,8	49,9	45,4	42,3	40,8	39,4	38,7	37,8	36,3	35,1	31,8
ELFEXT $\geq$ dB/100m	68,0	56,0	48,0	43,9	42,0	38,1	32,1	28,0	26,1	24,2	23,1	22,0	20,0	18,5	14,0
PS ELFEXT $\geq$ dB/100m	65,0	53,0	45,0	41,9	39,0	35,1	29,1	25,0	23,1	21,2	20,1	19,0	17,0	15,5	11,0
RL $\geq$ dB	20,0	23,0	25,0	25,0	25,0	23,6	21,5	20,1	19,4	18,8	18,4	18,0	17,3	17,3	17,3

### Transmission parameters graphs - examples of measurement results



## X-ON Electronics

Largest Supplier of Electrical and Electronic Components

*Click to view similar products for [Ethernet Cables / Networking Cables](#) category:*

*Click to view products by [BITNER](#) manufacturer:*

Other Similar products are found below :

[0152660053](#) [603020002](#) [73-7797-25](#) [73-8890-10](#) [73-8890-14](#) [73-8891-14](#) [73-8891-25](#) [73-8892-50](#) [73-8894-10](#) [73-8894-3](#) [73-8895-14](#) [73-8896-7](#) [MCJB2-10P6Q7-120](#) [84909-0204](#) [9QA0-111-12-3.00](#) [1200650742](#) [1200700174](#) [1200860368](#) [1200650013](#) [1201080008](#) [1-21919-1](#) [1300500373](#) [1300101844](#) [1300101845](#) [130050-0004](#) [1300500014](#) [1410147](#) [E16A06002M030](#) [E200102-009-S1](#) [MT14-187L](#) [17-103530](#) [NK5EPC18RDY](#) [NK5EPC18VLY](#) [NK5EPC18YLY](#) [NK5EPC1GRY](#) [NK5EPC30BLY](#) [NK5EPC30VLY](#) [NK5EPC30YLY](#) [NK5EPC4Y](#) [NK5EPC6YLY](#) [NK5EPC8BLY](#) [NK5EPC9YLY](#) [NK6PC30BUY](#) [NK6PC30GRY](#) [NK6PC30RDY](#) [NK6PC30Y](#) [NK6PC30YLY](#) [1969343-6](#) [C501100010](#) [C501106002](#)