

# BiTLAN S/FTP cat.7A LSOH

## 1200 MHz

Halogen-free, data transmission cable, screened



internal application



EN 60332-1



data transmission



halogen-free  
EN 60754



low smoke emission  
EN 61034

## Technical data:

### Temperature range:

Operating temperature: -30°C to +70°C

Min. installation temp: -10°C

**Bending radius:** 6xØ

**Conductor diameter:** 0,64±0,015mm

**Insulated core diameter:** 1,50±0,01mm

**DC loop resistance at 20°C (max):** 125Ω/km

**Insulation resistance (min):** 5GΩxkm

**Resistance unbalance:** ≤2%

**Capacitance at 1 kHz:** 45±5nF/km

**Capacitance unbalance at 1kHz (max):**

1600pF/km

**Nominal voltage:** 150V

**Test voltage - 1min:**

AC 50 Hz: 700V

DC: 1000V

**Characteristic impedance:** 100±5Ω

**NVP value:** 77%

**Return loss (min):**

f = 4÷10MHz: 20+5lg(f)

f = 10÷20MHz: 25

f = 20÷350MHz: 25-7lg(f/20)

f = 250÷600MHz: 17,3

f = 600÷1000MHz: 17,3-10lg(f/600)

**Coupling attenuation within the range**

**of 30÷100 MHz (min.):** 70dB

**Transfer impedance at 10 MHz (max):**

10mΩ/m

## Construction:

**Conductors:** solid round copper conductors

**Insulation:** special polyolefin compound, foam-skin

**Core identification:** wh/bu-bu, wh/or-or, wh/gn-gn, wh/bn-bn

**Core arrangement:** cores twisted in pairs, screened pairs twisted together

**Screen 1:** aluminium backed polyester tape on every pair and tinned copper drain wire

**Screen 2:** tinned copper wire braid

**Outer sheath:** special LSOH compound

**Outer sheath colour:** orange RAL 2003

**Marking:** BITNER BiTLAN S/FTP 4x2x22AWG cat.7A 1200MHz LSOH

EN 50173-1 ISO/IEC 11801-1 IEC 61156-5 ID no. CE RoHS [www.bitner.com.pl](http://www.bitner.com.pl) meters

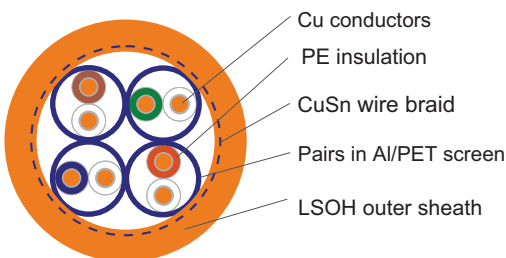
## Application:

BiTLAN S/FTP cat.7A LSOH cables are applicable to computer networks with operating frequency band up to 1200MHz. Suitable for transmission of data, audio and video signals, with bitrate up to 10Gb/s. Additional individual and collective Al/Pet screens with CuSn drain wire acts as a protection against external electromagnetic interferences. Dedicated for fixed installations within indoor structured cabling systems as per EN 50173-1, ISO/IEC 11801, ANSI/TIA 568-C.2 standards, as well as within industrial networks exposed to external electromagnetic interferences.

Cables with flame retardant LSOH outer sheath ensuring low smoke emission acc. to EN 50268-2, IEC 61034-2 and limited emission of corrosive gases acc. to EN 60754-2, IEC 60754-2. should be installed in places with increased fire safety requirements.

Cables classified according to **EN 50575 (CPR)**.

## Packaging:



Spool/Coil  
500m



Spool/drum  
1000m

Cat. no	Construction	Cu wire	O.D. [mm]	Cu [kg/km]	Cable weight [kg]	Bandwidth [MHz]
TI0089	S/FTP cat.7A LSOH	0,64	9,4	30	69	1200

Cable Factory BITNER reserves the right to modify the specifications without prior notice

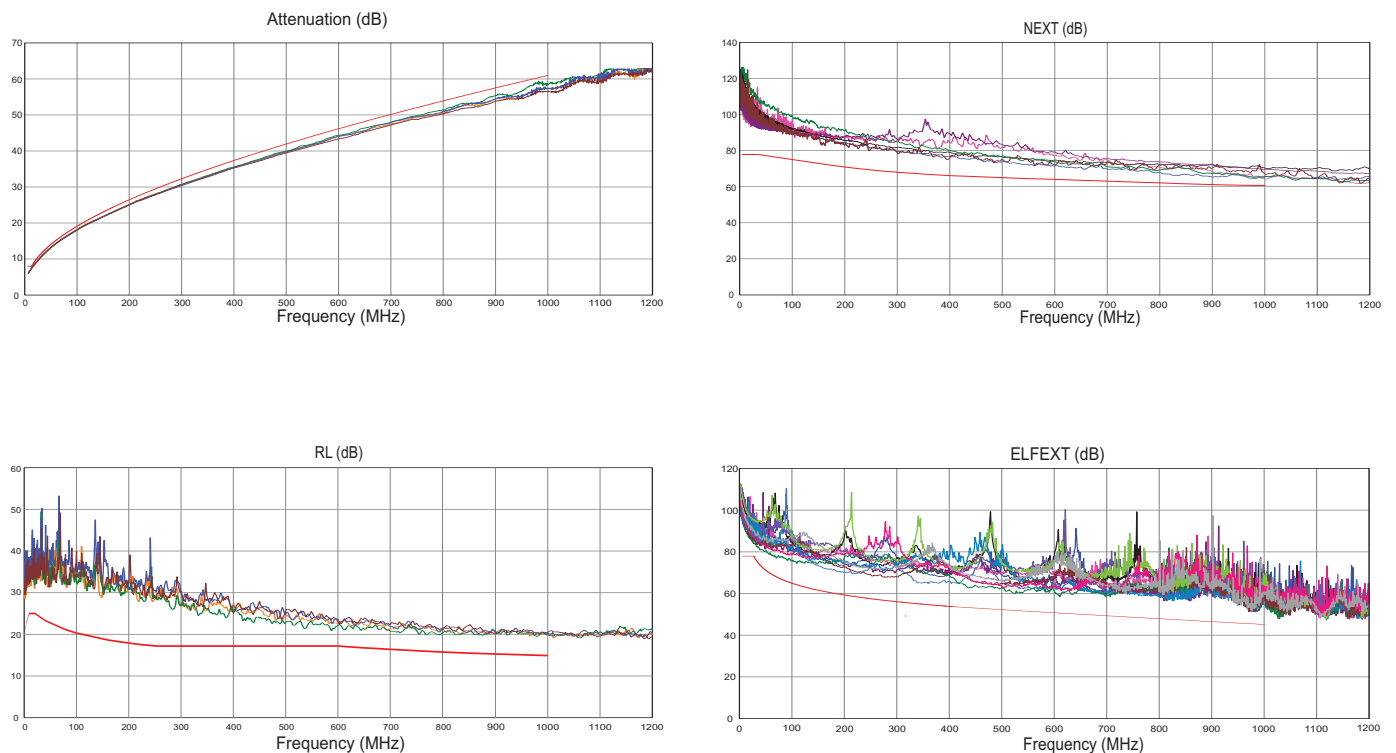
# BiTLAN S/FTP cat.7A LSOH

**1200 MHz** Halogen-free, data transmission cable, screened

## Performance test charts and data:

Frequency MHz	1	4	10	16	20	31,25	62,5	100	155	200	300	600	750	900	1000	1200
Attenuation $\leq$ dB/100m	2,0	3,7	5,8	7,3	8,2	10,2	14,5	18,5	23,2	26,5	32,7	47,1	53,1	58,5	61,9	68,4
NEXT $\geq$ dB/100m	78,0	78,0	78,0	78,0	78,0	78,0	78,0	75,4	72,5	70,9	68,2	63,7	62,3	61,1	60,4	59,2
PS NEXT $\geq$ dB/100m	75,0	75,0	75,0	75,0	75,0	75,0	75,0	72,4	69,5	67,9	65,2	60,7	59,3	58,1	57,4	56,2
ELFEXT $\geq$ dB/100m	78,0	78,0	78,0	78,0	78,0	75,5	69,5	65,3	61,5	59,3	55,8	49,7	47,8	46,2	45,3	43,7
PS ELFEXT $\geq$ dB/100m	75,0	75,0	75,0	75,0	75,0	72,5	66,5	62,3	58,5	56,3	52,8	46,7	44,8	43,2	42,3	40,7
RL $\geq$ dB	20,0	23,0	25,0	25,0	25,0	23,7	21,6	20,1	18,8	18,0	17,3	17,3	16,3	15,5	15,1	14,3

## Transmission parameters graphs - examples of measurement results



## X-ON Electronics

Largest Supplier of Electrical and Electronic Components

*Click to view similar products for [Ethernet Cables / Networking Cables](#) category:*

*Click to view products by [BITNER](#) manufacturer:*

Other Similar products are found below :

[0152660053](#) [603020002](#) [73-7797-25](#) [73-8890-10](#) [73-8890-14](#) [73-8891-14](#) [73-8891-25](#) [73-8892-50](#) [73-8894-10](#) [73-8894-3](#) [73-8895-14](#) [73-8896-7](#) [MCJB2-10P6Q7-120](#) [84909-0204](#) [9QA0-111-12-3.00](#) [1200650742](#) [1200700174](#) [1200860368](#) [1200650013](#) [1201080008](#) [1-21919-1](#) [1300500373](#) [1300101844](#) [1300101845](#) [130050-0004](#) [1300500014](#) [1410147](#) [E16A06002M030](#) [E200102-009-S1](#) [MT14-187L](#) [17-103530](#) [NK5EPC18RDY](#) [NK5EPC18VLY](#) [NK5EPC18YLY](#) [NK5EPC1GRY](#) [NK5EPC30BLY](#) [NK5EPC30VLY](#) [NK5EPC30YLY](#) [NK5EPC4Y](#) [NK5EPC6YLY](#) [NK5EPC8BLY](#) [NK5EPC9YLY](#) [NK6PC30BUY](#) [NK6PC30GRY](#) [NK6PC30RDY](#) [NK6PC30Y](#) [NK6PC30YLY](#) [1969343-6](#) [C501100010](#) [C501106002](#)