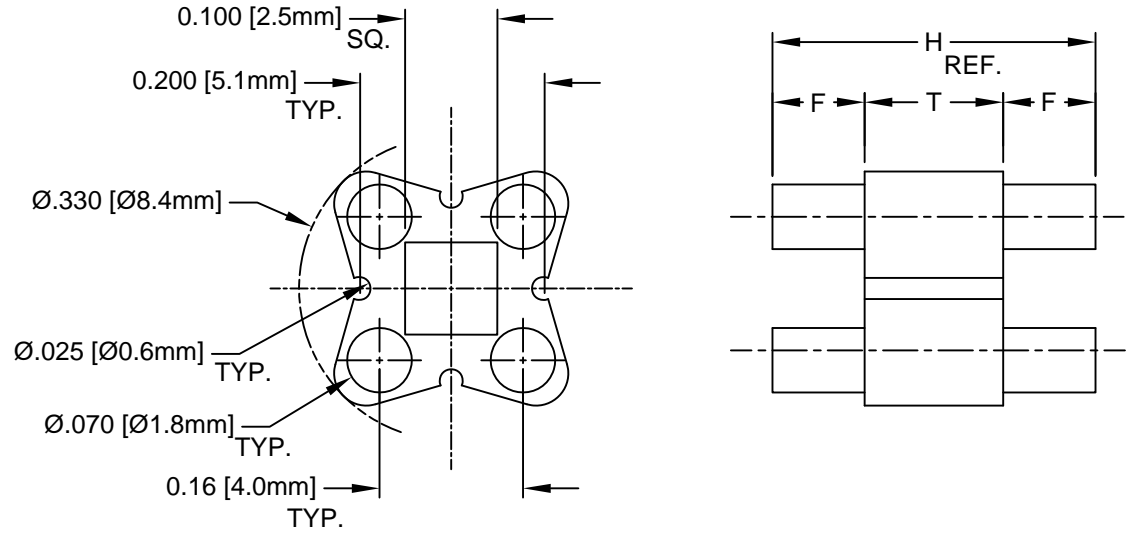



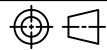
REV.	DESCRIPTION	DATE	APPROVED
B	Engineering Update w/o Changes	02/16/04	M. C.
C	Removed Material Code	05/22/16	J. C.



PART NO.	H	T	F
126-030	.030 (.76)	.030(.76)	000
126-040	.040 (1.0)	.030(.76)	.005 (.13)
126-050	.050 (1.3)	.030(.76)	.010 (.25)
126-060	.060 (1.5)	.030(.76)	.015 (.38)
126-070	.070 (1.8)	.030(.76)	.020 (.51)
126-080	.080 (2.0)	.030(.76)	.025 (.64)
126-090	.090 (2.3)	.030(.76)	.030 (.76)
126-100	.100 (2.5)	.030(.76)	.035 (.89)
126-110	.110 (2.8)	.030(.76)	.040 (1.0)
126-120	.120 (3.0)	.030(.76)	.045 (1.1)
126-130	.130 (3.3)	.030(.76)	.050 (1.3)

PART NO.	H	T	F
126-140	.140 (3.6)	.030(.76)	.055 (1.4)
126-150	.150 (3.8)	.030(.76)	.060 (1.5)
126-160	.160 (4.1)	.030(.76)	.065 (1.7)
126-170	.170 (4.3)	.030(.76)	.070 (1.8)
126-180	.180 (4.6)	.030(.76)	.075 (1.9)
126-190	.190 (4.8)	.030(.76)	.080 (2.0)
126-200	.200 (5.1)	.030(.76)	.085 (2.2)
126-210	.210 (5.3)	.030(.76)	.090 (2.3)
126-220	.220 (5.6)	.030(.76)	.095 (2.4)
126-230	.230 (5.8)	.030(.76)	.100 (2.5)
126-240	.240 (6.1)	.030(.76)	.105 (2.7)

3. NO MEASURABLE AXIAL FLASH ON FEET 8 PL.
2. MATERIAL: NYLON 6/6, 94V-2, WHITE.
1. GENERAL SPECIFICATIONS: BIVAR MOLDED COMPONENT SPECIFICATION BV00-E101.

STANDARD TOLERANCE (UNLESS OTHERWISE SPECIFIED)		 4 THOMAS, IRVINE, CA. 92618 TEL: (949) 951-8808 FAX: (949) 951-3974	
DECIMALS	ANGULAR		
.X ± .1	X° ± 1°	 <b>TITLE:</b> PERM-O-PAD TO-5 to TO-18 MOUNT	
.XX ± .01			
.XXX ± .005		<b>PART NO:</b> 126-XXX	
DESIGNED: <b>D. Green</b>	DATE: <b>04/14/03</b>	<b>REVISION:</b> C	
CHECKED: <b>M. Chen</b>	DATE: <b>04/14/03</b>	<b>CAGE CODE :</b> 32559 <b>SHEET #</b> 1 <b>OF</b> 1	
CAD GENERATED DOCUMENT. DO NOT MEASURE DRAWING.			

## X-ON Electronics

Largest Supplier of Electrical and Electronic Components

*Click to view similar products for [Circuit Board Hardware - PCB category](#):*

*Click to view products by [Bivar manufacturer](#):*

Other Similar products are found below :

[8919-0-00-15-00-00-03-0](#) [0135-0-15-01-30-27-04-0](#) [5970-1-15-01-32-14-04-0](#) [0149-0-15-15-30-27-04-0](#) [7305-0-15-15-47-14-10-0](#) [MLN](#)  
[150/1 BLACK](#) [8579-0-15-80-11-27-10-0](#) [8579-1-15-15-11-27-10-0](#) [8830-0-15-01-22-14-10-0](#) [8836-0-00-21-00-00-03-0](#) [PRUEF 1 RED](#)  
[PRUEF 2 RED](#) [9976-0-00-00-00-00-03-0](#) [PW1616](#) [1215-3-05-00-00-00-01-0](#) [1231](#) [1303-0-15-15-47-14-04-0](#) [1404-3](#) [1404-4](#) [1406-4](#) [1407-3](#)  
[1406-3](#) [1407-4](#) [1408-3](#) [1424-4](#) [1427-3](#) [1419-4](#) [1426-4](#) [MPS 1 BLACK](#) [1548-103](#) [1938-0-00-00-00-00-03-0](#) [1942-0-00-00-00-00-03-0](#) [2101-](#)  
[3-00-44-00-00-07-0](#) [2108-2-00-50-00-00-07-0](#) [2109-2-00-44-00-00-07-0](#) [2110-2-00-44-00-00-07-0](#) [2111-2-00-00-00-00-07-0](#) [2113-4-](#)  
[00-44-00-00-07-0](#) [2301-3-00-44-00-00-07-0](#) [2308-1-00-50-00-00-07-0](#) [2313-2-00-00-00-00-07-0](#) [2315-2-01-44-00-00-07-0](#) [2317-2-00-50-00-](#)  
[00-07-0](#) [2333-1-00-50-00-00-07-0](#) [9000-0-00-00-00-00-03-0](#) [2506-2-00-50-00-00-07-0](#) [2507-2-01-44-00-00-07-0](#) [2508-2-00-44-00-00-07-0](#)  
[2561-2-00-44-00-00-07-0](#) [9220](#)