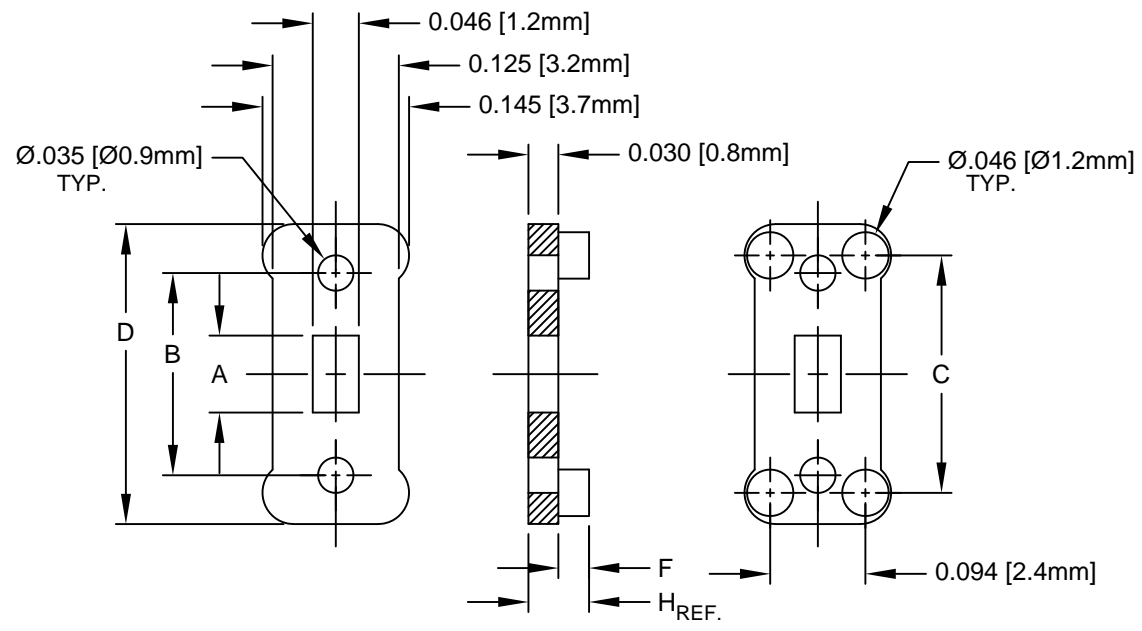



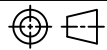
REV.	DESCRIPTION	DATE	APPROVED
C	Engineering Update w/o Changes	02/17/04	M. C.
D	Engineering Table Update	08/27/04	M. C.
E	Corrected Typos on "F" Dimension	03/06/07	M. C.
F	Removed Part Numbers from Table	07/17/14	J. C.
G	Removed Material Code	05/22/16	J. C.



330 SERIES	A	B	C	D	F	H
330-200					.000	.030 (.76)
331-200	.076 (1.9)	.200 (5.1)	.235 (6.0)	.297 (7.5)	.030 (.76)	.060 (1.5)
332-200					.060 (1.5)	.090 (2.3)
337-300	.176 (4.5)	.300 (7.6)	.335 (8.5)	.397 (10.1)	.060 (1.5)	.090 (2.3)
340-400					.000	.030 (.76)
341-400	.276 (7.0)	.400 (10.2)	.435 (11.0)	.497 (12.6)	.030 (.76)	.060 (1.5)
342-400					.060 (1.5)	.090 (2.3)
345-500					.000	.030 (.76)
346-500	.376 (9.6)	.500 (12.7)	.535 (13.6)	.597 (15.2)	.030 (.76)	.060 (1.5)
347-500					.060 (1.5)	.090 (2.3)
352-600	.476 (12.1)	.600 (15.2)	.635 (16.1)	.697 (17.7)	.060 (1.5)	.090 (2.3)
355-700					.000	.030 (.76)
356-700	.576 (14.6)	.700 (17.8)	.735 (18.7)	.797 (20.2)	.030 (.76)	.060 (1.5)
357-700					.060 (1.5)	.090 (2.3)

2. MATERIAL: NYLON 6/6, 94V-2, WHITE.

1. GENERAL SPECIFICATIONS: BIVAR MOLDED COMPONENT SPECIFICATION BV00-E101.

STANDARD TOLERANCE ( UNLESS OTHERWISE SPECIFIED )		 <b>BIVAR</b> <sup>®</sup> 4 THOMAS, IRVINE, CA. 92618 TEL: (949) 951-8808 FAX: (949) 951-3974	
DECIMALS	ANGULAR		
.X ± .1	X° ± 1°	 <b>TITLE:</b> 330 SERIES SINGLE & DOUBLE IN-LINE MOUNT	
.XX ± .01			
.XXX ± .005		<b>REVISION:</b> G	
DESIGNED: <b>M. Chen</b>	DATE: <b>01/30/03</b>	<b>PART NO:</b> 33X-XXX	
CHECKED: <b>D. Green</b>	DATE: <b>01/30/03</b>	<b>CAGE CODE :</b> 32559 <b>SHEET #</b> 1 <b>OF</b> 1	
CAD GENERATED DOCUMENT. DO NOT MEASURE DRAWING.			

## X-ON Electronics

Largest Supplier of Electrical and Electronic Components

*Click to view similar products for [Capacitor Hardware](#) category:*

*Click to view products by [Bivar](#) manufacturer:*

Other Similar products are found below :

[B44020B0002B030](#) [B44020J0006B012](#) [B44020J0007B012](#) [B44030J0036B000](#) [SG12000P](#) [FN322-3-05](#) [300-100-075](#) [31762-87](#)

[B44020A0002B025](#) [B44030J0051B000](#) [B44030J0064B000](#) [B44030J0090B000](#) [31762-45](#) [340-400](#) [4586-48](#) [B44020B0001B025](#)

[B44030A0051B000](#) [B44030A0036B000](#) [2353](#) [2788](#) [124586-0026A](#) [B44030A0064B000](#) [2785](#) [2789](#) [307-500](#) [31762-132](#) [31762-51](#) [32107-3](#)

[4586-97A](#) [125562-03](#) [VR1B](#) [VR3B](#) [VR6B](#) [VR6A](#) [VR4](#) [VR10B](#) [TH17](#) [32108-2](#) [2740](#) [302-200](#) [32107-1](#) [32107-2](#) [VR8](#) [VR4A](#) [VR1A](#) [2738](#)

[125562-02](#) [3896](#) [MAL804324041E3](#) [MAL804324031E3](#)