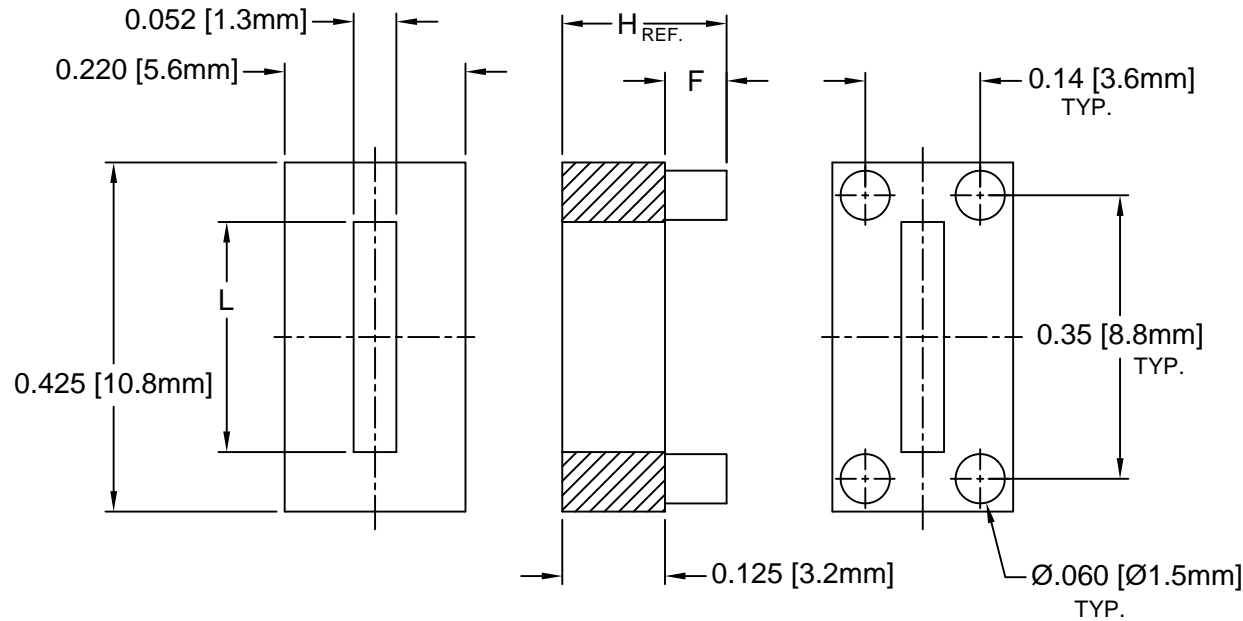

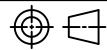


REV.	DESCRIPTION	DATE	APPROVED
A	Engineering Update w/o Changes	02/23/04	M. C.
B	Added 425-150	10/18/05	M. C.
C	Dimension Correction	10/25/05	M. C.
D	425-150 Material Color Update	01/31/06	M. C.
E	Removed Material Code	05/22/16	J. C.



PART NO.	H	F	L	MATERIAL
423-125	.125 (3.2)	.000	.255 (6.5)	A
423-150	.150 (3.8)	.025 (.64)		
423-175	.175 (4.4)	.050 (1.3)		
423-200	.200 (5.1)	.075 (1.9)		
424-125	.125 (3.2)	.000	.280 (7.1)	B
424-150	.150 (3.8)	.025 (.64)		
424-175	.175 (4.4)	.050 (1.3)		
424-200	.200 (5.1)	.075 (1.9)		
425-150	.150 (3.8)	.025 (.64)	.315 (8.0)	A

3. MATERIAL B: NYLON 6/6, 94V-2, WHITE.
2. MATERIAL A: NYLON 6/6, 94V-2, BLACK.
1. GENERAL SPECIFICATIONS: BIVAR MOLDED COMPONENT SPECIFICATION BV00-E101.

STANDARD TOLERANCE (UNLESS OTHERWISE SPECIFIED)		 4 THOMAS, IRVINE, CA. 92618 TEL: (949) 951-8808 FAX: (949) 951-3974			
DECIMALS	ANGULAR				
.X ± .1	X° ± 1°	 TITLE: MOLDED POWER TRANSISTOR MOUNT (TO-202/220)			
.XX ± .01					
.XXX ± .005		DESIGNED:	DATE:	PART NO: 423-XXX / 424-XXX / 425-XXX	REVISION:
		M. Chen	03/10/03		E
		CHECKED:	DATE:	CAGE CODE : 32559	SHEET # 1 OF 1
		D. Green	03/10/03	CAD GENERATED DOCUMENT. DO NOT MEASURE DRAWING.	

X-ON Electronics

Largest Supplier of Electrical and Electronic Components

Click to view similar products for [Mounting Fixings](#) category:

Click to view products by [Bivar](#) manufacturer:

Other Similar products are found below :

[5912235-2](#) [007541](#) [627](#) [M3783-7001](#) [71-074914-006](#) [71-441549-19S](#) [75-69211-3P](#) [75-69214-6P](#) [75-69220-27S](#) [75-69224-5S](#) [7717-8DAP](#)
[85043GULPR](#) [85047GULPT](#) [FPK-02-R10](#) [PMS27488-001-01](#) [1-18023-0](#) [H-118-2](#) [D83999/20WC8SN](#) [DB1](#) [1302030464](#) [DC31-14W19PN](#)
[DC31-14W19PW](#) [DC32-18W32SN](#) [DC36-18-32SW](#) [DC36-18-32SX](#) [DC37-14-19PW](#) [DC37-22-21PX](#) [1302010957](#) [1302263564](#)
[1302340393](#) [1404-0016-78](#) [14540](#) [149331-9811](#) [1561-60](#) [1566](#) [1566](#) [BR16A](#) [HS5659MB98PN](#) [NT20SATT01](#) [22594-8](#) [KBB-141](#)
[89078GBEPR](#) [915060](#) [SF4011-60101](#) [97-CS-50](#) [1671](#) [LS10215R14-15PN](#) [LS10215R14-7PN L/C](#) [1855-54](#) [T-2085-SP](#)