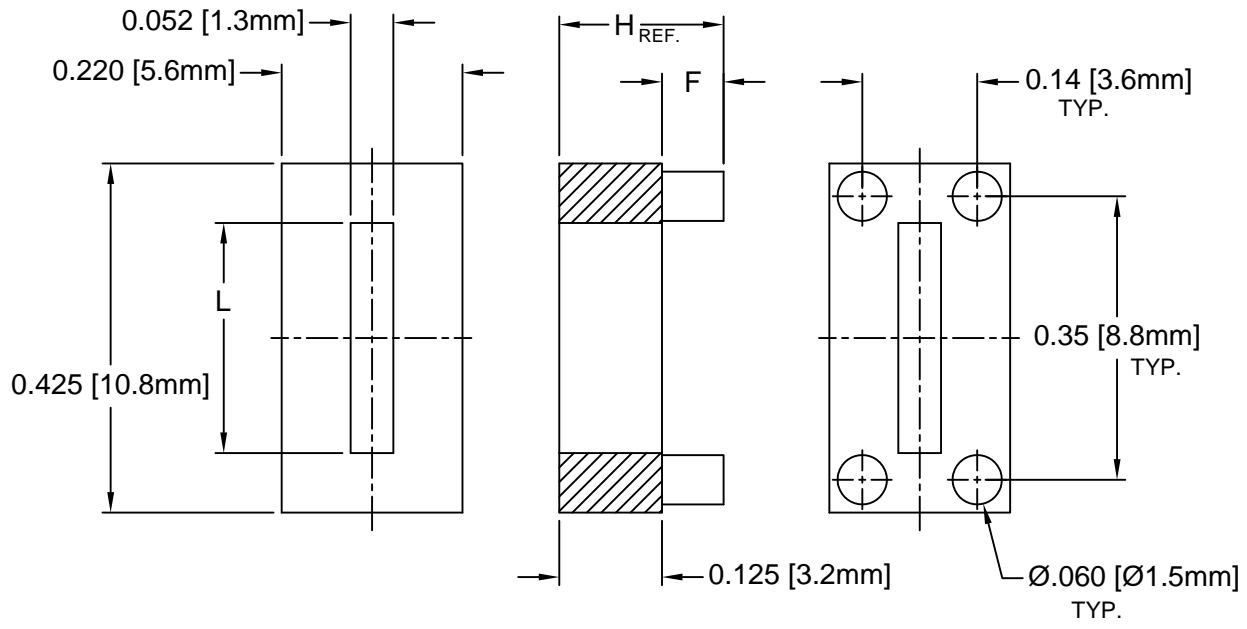

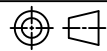


REV.	DESCRIPTION	DATE	APPROVED
A	Engineering Update w/o Changes	02/23/04	M. C.
B	Added 425-150	10/18/05	M. C.
C	Dimension Correction	10/25/05	M. C.
D	425-150 Material Color Update	01/31/06	M. C.
E	Removed Material Code	05/22/16	J. C.



PART NO.	H	F	L	MATERIAL
423-125	.125 (3.2)	.000	.255 (6.5)	A
423-150	.150 (3.8)	.025 (.64)		
423-175	.175 (4.4)	.050 (1.3)		
423-200	.200 (5.1)	.075 (1.9)		
424-125	.125 (3.2)	.000		
424-150	.150 (3.8)	.025 (.64)	.280 (7.1)	B
424-175	.175 (4.4)	.050 (1.3)		
424-200	.200 (5.1)	.075 (1.9)		
425-150	.150 (3.8)	.025 (.64)	.315 (8.0)	A

3. MATERIAL B: NYLON 6/6, 94V-2, WHITE.
2. MATERIAL A: NYLON 6/6, 94V-2, BLACK.
1. GENERAL SPECIFICATIONS: BIVAR MOLDED COMPONENT SPECIFICATION BV00-E101.

STANDARD TOLERANCE (UNLESS OTHERWISE SPECIFIED)		 4 THOMAS, IRVINE, CA. 92618 TEL: (949) 951-8808 FAX: (949) 951-3974			
DECIMALS	ANGULAR				
.X ± .1	X° ± 1°		TITLE: MOLDED POWER TRANSISTOR MOUNT (TO-202/220)		
.XX ± .01			DESIGNED: M. Chen	DATE: 03/10/03	PART NO: 423-XXX / 424-XXX / 425-XXX
.XXX ± .005		CHECKED: D. Green	DATE: 03/10/03	CAGE CODE : 32559	SHEET # 1 OF 1
CAD GENERATED DOCUMENT. DO NOT MEASURE DRAWING.					

X-ON Electronics

Largest Supplier of Electrical and Electronic Components

Click to view similar products for [LED Mounting Hardware](#) category:

Click to view products by [Bivar](#) manufacturer:

Other Similar products are found below :

[00624250](#) [00624750](#) [M2200](#) [7047](#) [990-4901-010](#) [990-8115-001](#) [CMP22](#) [M16-T1](#) [C-101](#) [L2K-L4GD](#) [L2K-L5XL](#) [LDN51-125SL/BT](#)
[00624500](#) [7046](#) [7056](#) [SN3486](#) [26-0053](#) [TC4-R-](#) [SLQ16](#) [LM6-2](#) [LM12-1](#) [LM10-1](#) [CM00624375](#) [CM00624900](#) [RNG132](#) [FIX-LEDH-10.5](#)
[FIX-LEDH-11](#) [FIX-LEDH-11.5](#) [FIX-LEDH-12](#) [FIX-LEDH-14](#) [FIX-LEDH-17](#) [FIX-LEDH-18](#) [FIX-LEDH-4](#) [FIX-LEDH-4.5](#) [FIX-LEDH-7.5](#)
[FIX-LEDH-9.5](#) [FIX-LEDS-1.5](#) [FIX-LEDS-2](#) [FIX-LEDS-3.5](#) [FIX-LEDT-11](#) [FIX-LEDT-20](#) [FIX-LEDT-26](#) [FIX-LEDT-5](#) [FIX-LEDT-9](#)
[SQLEDS2-4-26](#) [7382](#) [CNXDX4624](#) [CNXDX4608](#) [CNXDF4608](#) [4740](#)