

Assembly Hardware



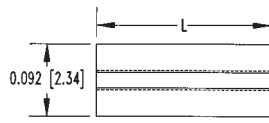
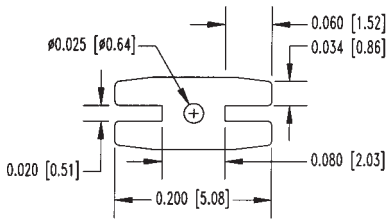
Extruded, Self-Retaining LED



- For Use with All Rectangular LEDs
- Compatible with 2 & 3 Leaded Devices
- High Temperature version available by special order.
- See page 41 for ordering information.

ERM Extruded, Self-Retaining LED Mounts

SERIES



Material Specifications:

Black PVC U.L. Rated 94V-0 materials.



Oxygen Rating Index: Over 28%

Standard Tolerances Extruded LED Mounts

Tolerances: O.D. ± .005 (.13), I.D. ± .005 (.13)

"L" Dim: .030 - .500 (0.76 -12.7) is ± .005 (.13)

"L" Dim: .505 - .750 (12.8-19.1) is ± .008 (.20)

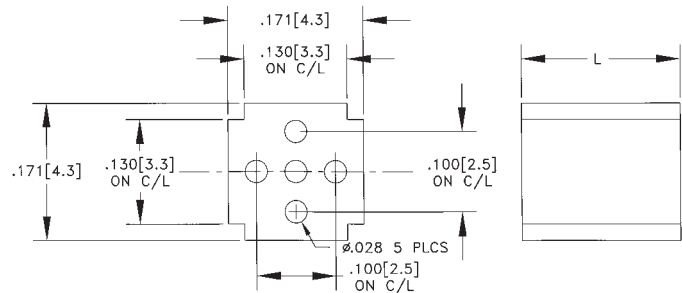
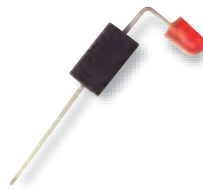
"L" Dim: .750 - 1.250 (19.2-21.8) is ± .015 (.38)

ERB Extruded, Self-Retaining LED Mounts

SERIES



- Standard Lengths from .030" - 1.250" (2.3 - 23.0 mm) in .005" (.127mm) increments
- Designed to mount T-1 (3mm) & T-1¼ (5mm) LEDs in a vertical or right angle position.



PART NO.	LED TYPE	LEAD NO.	'L'
ERB-XXX	All types	2 OR 3	.030-.900 (0.76-23.0)

Example: ERB-250 "L" Dimension of 0.250"

Note: High temperature versions available upon request. Minor mechanical differences may exist.

X-ON Electronics

Largest Supplier of Electrical and Electronic Components

Click to view similar products for [LED Mounting Hardware](#) category:

Click to view products by [Bivar](#) manufacturer:

Other Similar products are found below :

[00624750](#) [990-4901-010](#) [990-8115-001](#) [CMP22](#) [C-101](#) [LDN51-125SL/BT](#) [SN3486](#) [26-0053](#) [STD_590_BLK](#) [CNX714C401FVW](#) [TC4-R-SLQ16](#) [LM6-2](#) [LM12-1](#) [LM10-1](#) [CM00624900](#) [LEDH-101C-34](#) [LEDS2-8-26](#) [LEDS2E-10-01](#) [LEDS2M-240-01](#) [ZCH-200-I](#) [RNG132](#) [FIX-LEDH-10](#) [FIX-LEDH-11](#) [FIX-LEDH-11.5](#) [FIX-LEDH-12](#) [FIX-LEDH-14](#) [FIX-LEDH-17](#) [FIX-LEDH-18](#) [FIX-LEDH-4](#) [FIX-LEDH-4.5](#) [FIX-LEDH-7.5](#) [FIX-LEDH-9.5](#) [FIX-LEDS-1.5](#) [FIX-LEDS-2](#) [FIX-LEDS-3.5](#) [FIX-LEDT-11](#) [FIX-LEDT-20](#) [FIX-LEDT-26](#) [SQLEDS2-4-26](#) [7382](#) [CMC285BLK](#) [CNXDX4624](#) [CNXDX4608](#) [CNXDF4608](#) [CNXCE4118](#) [CNX440-X02-4-1-08](#) [4740](#) [CNXCX4104](#) [CNXCE4124](#)