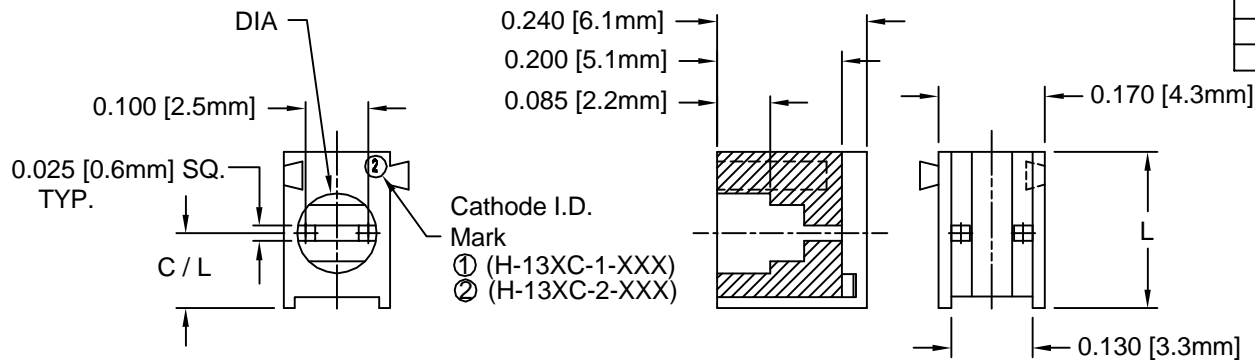
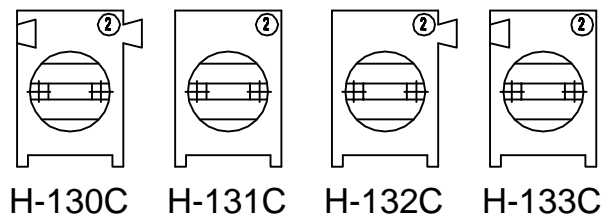
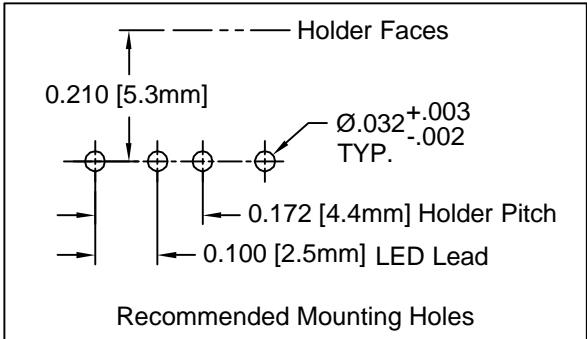


REV.	DESCRIPTION	DATE	APPROVED
B	Engineering Update w/o Changes	02/26/04	M. C.



Cathode I.D. Mark
 ① (H-13XC-1-XXX)
 ② (H-13XC-2-XXX)



PART NO.				ID MARK	DIA	C/L	L
H-130C SERIES	H-131C SERIES	H-132C SERIES	H-133C SERIES				
H-130C-1-120	H-131C-1-120	H-132C-1-120	H-133C-1-120	①	.128 [3.3mm]	.120 [3.0mm]	.250 [6.4mm]
H-130C-2-120	H-131C-2-120	H-132C-2-120	H-133C-2-120	②	.150 [3.8mm]		
H-130C-1-140	H-131C-1-140	H-132C-1-140	H-133C-1-140	①	.128 [3.3mm]	.140 [3.6mm]	.270 [6.9mm]
H-130C-2-140	H-131C-2-140	H-132C-2-140	H-133C-2-140	②	.150 [3.8mm]		
H-130C-1-160	H-131C-1-160	H-132C-1-160	H-133C-1-160	①	.128 [3.3mm]	.160 [4.1mm]	.290 [7.4mm]
H-130C-2-160	H-131C-2-160	H-132C-2-160	H-133C-2-160	②	.150 [3.8mm]		
H-130C-1-180	H-131C-1-180	H-132C-1-180	H-133C-1-180	①	.128 [3.3mm]	.180 [4.6mm]	.310 [7.9mm]
H-130C-2-180	H-131C-2-180	H-132C-2-180	H-133C-2-180	②	.150 [3.8mm]		

- 2. MATERIAL: NYLON 6/6, 94V-0, BLACK. BIVAR MATERIAL CODE 22-BK. RTP POLYAMIDE NYLON 6/6, 0200 FR, BLACK OR MODIFIED PLASTICS MN6/6-SE BK.
- 1. GENERAL SPECIFICATIONS: BIVAR MOLDED COMPONENT SPECIFICATION BV00-E101.

STANDARD TOLERANCE (UNLESS OTHERWISE SPECIFIED)	
DECIMALS	ANGULAR
.X ± .1	X° ± 1°
.XX ± .01	
.XXX ± .005	
DESIGNED: Michael Chen	DATE: 01/21/03
CHECKED: D. Green	DATE: 01/21/03

BIVAR[®]
 4 THOMAS, IRVINE, CA. 92618
 TEL: (949) 951-8808 FAX: (949) 951-3974

TITLE: T-1 (3mm) LED HOLDER
 INTERLOCKING VARIABLE CENTERLINE

PART NO: H-13XC-X-XXX	REVISION: B
CAGE CODE : 32559	SHEET # 1 OF 1

CAD GENERATED DOCUMENT. DO NOT MEASURE DRAWING.

X-ON Electronics

Largest Supplier of Electrical and Electronic Components

Click to view similar products for [Standard LEDs - Through Hole category](#):

Click to view products by [Bivar manufacturer](#):

Other Similar products are found below :

[LTL-10254W](#) [LTL-1214A](#) [LTL-3251A](#) [LTL-4262N](#) [LTL-433P](#) [LTL-5234](#) [LTL87HTBK](#) [LTL-87HD4B](#) [HLMP-EL30-PS0DD](#)
[1L0532V23G0TD001](#) [NSPW500CS](#) [NTE30036](#) [NTE30044](#) [NTE30059](#) [NTE3020](#) [LD CQDP-1U3U-W5-1-K](#) [LO566UHR3-70G-A3](#)
[LP379PPG1C0G0300001](#) [SLX-LX3044GD](#) [SLX-LX3044ID](#) [SLX-LX3044YD](#) [1.90690.3330000](#) [SSS-LX4673ID-410B](#) [1L0532Y24I0TD001](#)
[264-7SYGD/S530-E2](#) [HLMP1385](#) [LTL-10224W](#) [LTL-1224A](#) [LTL-1234A](#) [LTL-2251AT](#) [LTL-307YE-012](#) [LTL-403HR](#) [LTL-4222](#) [LU7-E-](#)
[B](#) [4380H1](#) [TLHY44K1L2](#) [HLMP-3962-F0002](#) [HLMP-GG15-R0000](#) [323-2SURD/S530-A3](#) [L53SRC/E-Z](#) [L-7679C1ZGC](#) [4302T1-5V](#)
[4306D23](#) [4363D1/5](#) [WP1503SRC/J4](#) [WP153GDT](#) [WP153YDT](#) [WP1543SGC](#) [WP1543SURC](#) [WP53MGD](#)