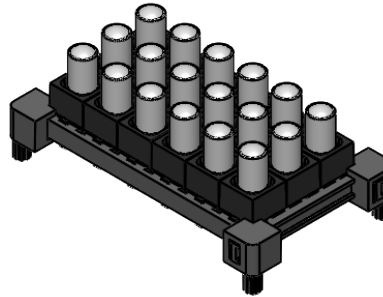


**PART NO. EXAMPLE:**  
**MLPS-RT-4-0306-00-0550-0000-D**

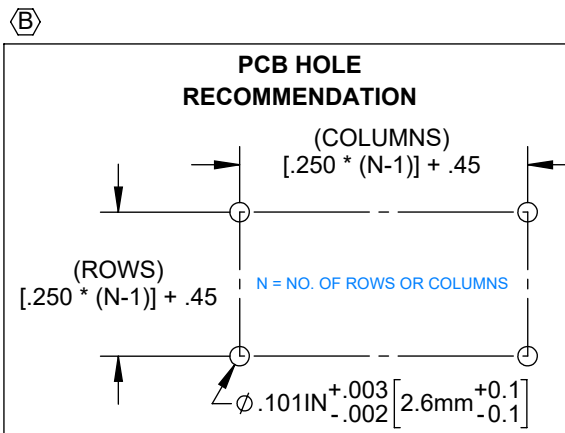
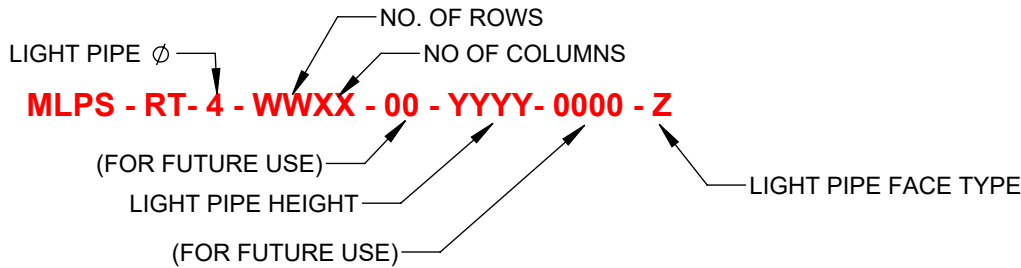
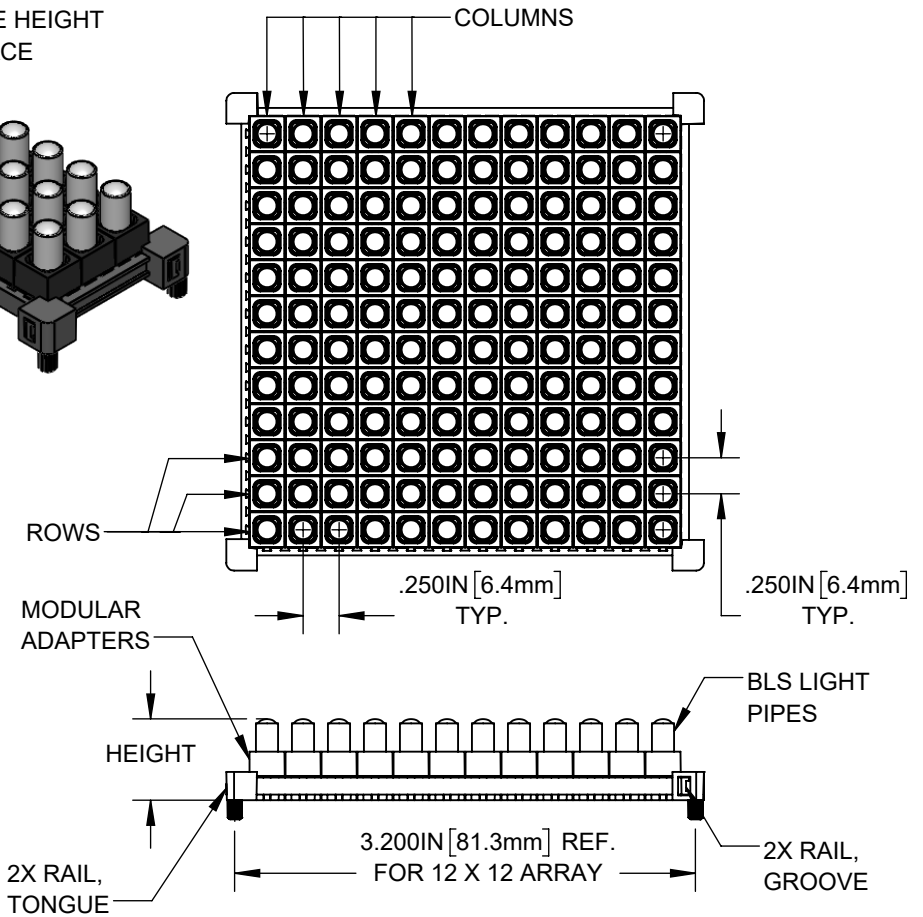
4mm DIAMETER LIGHT PIPES  
 3 ROWS, 6 COLUMNS  
 .550 LIGHT PIPE HEIGHT  
 DOME TYPE FACE

LIGHT PIPE FACE TYPE	TYPE CODE "Z"
DOME	D
FLAT	F

LIGHT PIPE HEIGHT		ARRAY CONFIGURATION	
HEIGHT	CODE "YYYY"	ROWS "WW"	COLUMNS "XX"
.350 IN	0350	01	01
.400 IN	0400	02	02
.450 IN	0450	03	03
.500 IN	0500	04	04
.550 IN	0550	05	05
.600 IN	0600	06	06
.750 IN	0750	07	07
1.000 IN	1000	08	08
1.250 IN	1250	09	09
1.500 IN	1500	10	10
1.750 IN	1750	11	11
2.000 IN	2000	12	12



REVISIONS			
REV.	DESCRIPTION	DATE	APPROVED
A	ENGINEERING RELEASE	04/25/23	A.V.
B	INCLUDE MOUNTING SPEC PER ECO-1210	07/21/23	A.V.



**NOTES:**

1. ROHS COMPLIANT.
2. ALL PARTS SHIPPED ASSEMBLED.
3. MATERIALS:  
 RAILS: NYLON  
 BLS LIGHT PIPE: POLYCARBONATE, CLEAR, UL94 V-0  
 ADAPTER, MODULAR: NYLON

**CUSTOMER USE DRAWING**

STANDARD TOLERANCE (UNLESS OTHERWISE SPECIFIED)		 4 THOMAS, IRVINE, CA. 92618 TEL: (949) 951-8808 FAX: (949) 951-3974	
DECIMALS	ANGULAR		
.X ± .1	X° ± 1°	TITLE: MODULAR LIGHT PIPE SYSTEM, BLS-LP42	
.XX ± .01		DESIGNED: A. VALDEZ	DATE: 04/25/2023
.XXX ± .005		REVISION: B	
DRAWING NO: MLPS-RT-4-WWXX-00-YYYY-0000-Z		REVISION: B	
DESIGNED: A. VALDEZ	DATE: 04/25/2023	SHEET SIZE: A	CAGE CODE: 32559
REVISOR: M. PAGDONSOLAN	DATE: 07/21/2023	SCALE: 1:1	SHEET # 1 OF 1
CHECKED: A. VALDEZ	DATE: 07/21/2023	CAD GENERATED DOCUMENT, DO NOT MEASURE DRAWING	

## X-ON Electronics

Largest Supplier of Electrical and Electronic Components

*Click to view similar products for [LED Light Pipes](#) category:*

*Click to view products by [Bivar](#) manufacturer:*

Other Similar products are found below :

[LPA-C011301S-6](#) [FLP25-1.95](#) [LPA-C011301S-5.4](#) [LPA-R051171S-12](#) [LPA-S011331S](#) [515-1027-803F](#) [515-1217F](#) [515-1064-810F](#)  
[7511A41](#) [7511A87-500](#) [5151064802F](#) [LPF-R011340S](#) [515-1166-801F](#) [LC-11.25](#) [CLP-1214](#) [515-1064-808F](#) [515-1192-0025-0DF](#) [515-1192-80-3DF](#) [1279.1008](#) [1296.7022](#) [BFL-1115](#) [LC2-4.1](#) [SF4-2.5-F5P](#) [PLP5-2-625-54](#) [FLP25-13.5](#) [MLPS-RTB-3-0302-00-1000-0000-D-2](#)  
[1271.2002](#) [1272.0030](#) [1276.2004](#) [1281.1001-8MM](#) [1282.1300](#) [1296.1034](#) [1296.2054](#) [1296.3004](#) [LCS112CTP](#) [LCS132CTP](#) [LCV136CTP](#)  
[LMS053CTP](#) [LPC062CTP](#) [LPC076CTP](#) [LPC078CTP](#) [LPC096CTP](#) [LPC105CTP](#) [LPC110CTP](#) [LPC122CTP](#) [LPC130CTP](#) [LPC170CTP](#)  
[LSS024CTP](#) [LSV060CTP](#) [LSV080CTP](#)