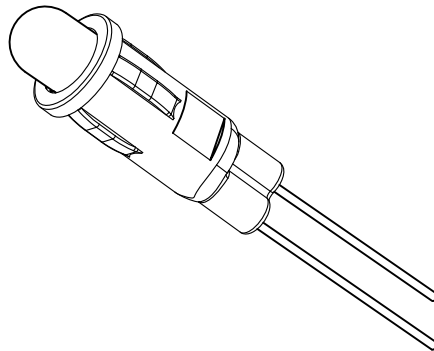
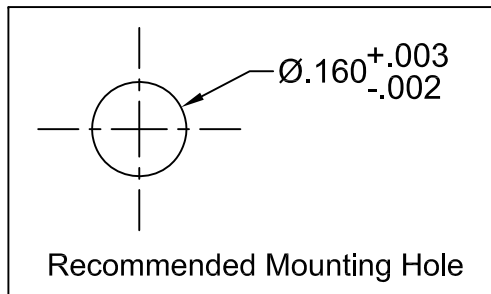
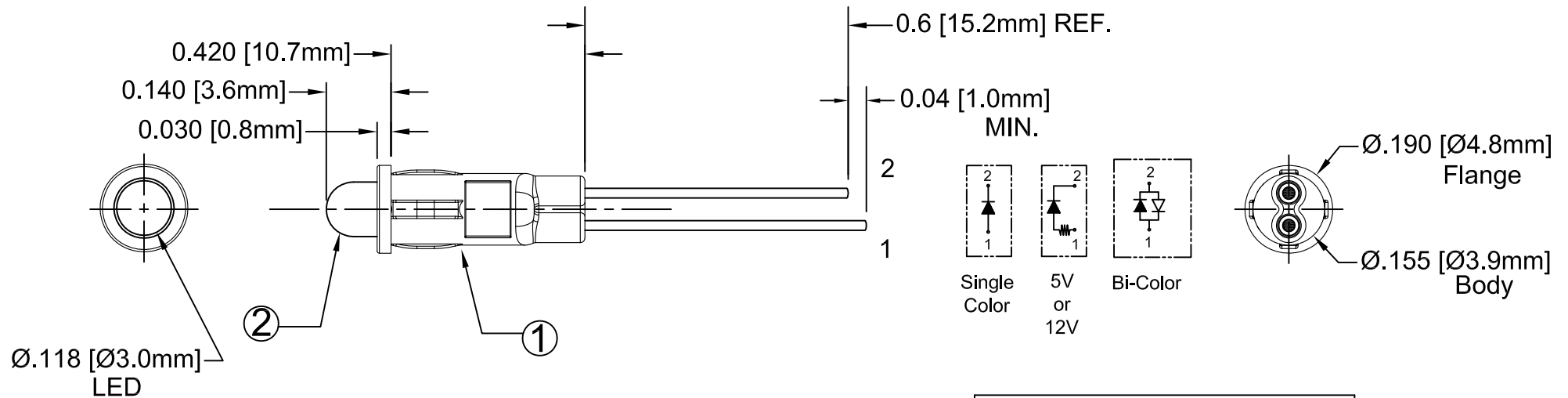


ITEM	Q'TY	PART NUMBER	PART DESCRIPTION
1	1	PM3-XXX	LED Holder, Panel Mount, Press Fit, (3mm) PM3 (Standard LED), PM3-5V (5V LED), & PM3-12V (12V LED)
2	1	3XXX-S	T-1 (3mm) Non-Flange, See Following Pages

REV.	DESCRIPTION	DATE	APPROVED
A	Engineering Release	09/15/06	M. C.
B	LED Lead Change to -S	12/13/10	T.Y.
C	Updated LED Offering	09/01/11	T.Y.
D	Updated LED Offering	05/01/12	T.Y.
E	Updated BOM item 1	11/12/12	T.Y.




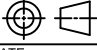
## ABSOLUTE MAXIMUM RATINGS (Ta = 25°C)

REVERSE VOLTAGE	5V
REVERSE CURRENT ( VR=5V)	100µA
OPERATING TEMPERATURE RANGE	-25°C ~ 85°C
STORAGE TEMPERATURE	-30°C ~ 100°C
LEAD SOLDERING TEMPERATURE (1/16" FROM BODY)	260°C for 5 Seconds

STANDARD TOLERANCE ( UNLESS OTHERWISE SPECIFIED )		 4 THOMAS, IRVINE, CA. 92618 TEL: (949) 951-8808 FAX: (949) 951-3974	
DECIMALS	ANGULAR		
.X ±.1	X° ± 1°		<b>TITLE:</b> STD PANEL MOUNT INDICATORS
.XX ±.02			
.XXX ±.010			
DESIGNED: <b>Dan Beckman</b>	DATE: <b>09/15/06</b>	<b>PART NO:</b> PM3XXX	REVISION: <b>E</b>
CHECKED: <b>T. Yin</b>	DATE: <b>09/15/06</b>	<b>CAGE CODE : 32559</b>	<b>SHEET # 1 OF 4</b>
CAD GENERATED DOCUMENT, DO NOT MEASURE DRAWING.			


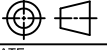
REV.	DESCRIPTION	DATE	APPROVED
	SEE SHEET#1.		

LED Assy. No.	Chip			Lens Appearance	Electro-Optical Data @ 20mA				Viewing Angle 2 θ ½ (Deg)	LED P/N	
	Material	Peak Wave Length	Emitted Color		If (mA)	Vf (V)		Iv (mcd)			
						MAX	TYP	MAX			TYP
PM3BWC	GaN/SiC	430	BLUE	WATER CLEAR	25	4	4.5	25	30	3BWC-S	
PM3BWD	GaN/SiC	430	BLUE	DIFFUSED	25	4	4.5	10	40	3BWD-S	
PM3BWT	GaN/SiC	430	BLUE	TINTED	25	4	4.5	25	30	3BWT-S	
PM3GC	GaP/GaP	568	GREEN	WATER CLEAR	30	2.1	2.8	40	30	3GC-S	
PM3GD	GaP/GaP	568	GREEN	DIFFUSED	30	2.1	2.8	25	40	3GD-S	
PM3GT	GaP/GaP	568	GREEN	TINTED	30	2.1	2.8	40	30	3GT-S	
PM3PGC	GaP/GaP	555	PURE GREEN	WATER CLEAR	30	2.2	2.8	10	30	3PGC-S	
PM3PGD	GaP/GaP	555	PURE GREEN	DIFFUSED	30	2.2	2.8	5	40	3PGD-S	
PM3PGT	GaP/GaP	555	PURE GREEN	TINTED	30	2.2	2.8	10	30	3PGT-S	
PM3YC	GaAsP/GaP	590	YELLOW	WATER CLEAR	30	2	2.8	40	30	3YC-S	
PM3YD	GaAsP/GaP	590	YELLOW	DIFFUSED	30	2	2.8	20	40	3YD-S	
PM3YT	GaAsP/GaP	590	YELLOW	TINTED	30	2	2.8	40	30	3YT-S	
PM3AC	GaAsP/GaP	605	AMBER	WATER CLEAR	30	2	2.8	40	30	3AC-S	
PM3AD	GaAsP/GaP	605	AMBER	DIFFUSED	30	2	2.8	25	40	3AD-S	
PM3AT	GaAsP/GaP	605	AMBER	TINTED	30	2	2.8	40	30	3AT-S	
PM3HC	GaAsP/GaP	625	HE RED	WATER CLEAR	30	2	2.8	50	30	3HC-S	
PM3HD	GaAsP/GaP	625	HE RED	DIFFUSED	30	2	2.8	30	40	3HD-S	
PM3HT	GaAsP/GaP	625	HE RED	TINTED	30	2	2.8	50	30	3HT-S	
PM3RC	GaP/GaP	700	RED	WATER CLEAR	20	2.1	2.8	2.5	30	3RC-S	
PM3RD	GaP/GaP	700	RED	DIFFUSED	20	2.1	2.8	2	40	3RD-S	
PM3RT	GaP/GaP	700	RED	TINTED	20	2.1	2.8	2.5	30	3RT-S	
PM3BC-A/G	GaAsP/GaP	605	AMBER	DIFFUSED	30	2.0	2.8	6	45	3BC-A/G	
	GaP/GaP	568	GREEN		30	2.1	2.8	6			
PM3BC	GaAsP/GaP	625	RED	DIFFUSED	30	2.0	2.8	6	45	3BC	
	GaP/GaP	568	GREEN		30	2.1	2.8	6			
PM3BC-R/Y	GaAsP/GaP	625	RED	DIFFUSED	30	2.0	2.8	6	45	3BC-R/Y	
	GaAsP/GaP	590	YELLOW		30	2.0	2.8	4			
PM3BC-Y/G	GaAsP/GaP	590	YELLOW	DIFFUSED	30	2.0	2.8	4	45	3BC-Y/G	
	GaP/GaP	568	GREEN		30	2.1	2.8	6			

STANDARD TOLERANCE ( UNLESS OTHERWISE SPECIFIED ) ±10% ALL VALUES		 <b>BIVAR</b> <sup>®</sup> 4 THOMAS, IRVINE, CA. 92618 TEL: (949) 951-8808 FAX: (949) 951-3974	
ANGULAR X° ± 5°			
		TITLE: STD PANEL MOUNT INDICATORS	
DESIGNED: <b>Dan Beckman</b>	DATE: <b>09/15/06</b>	PART NO: <b>PM3XXX</b>	REVISION: <b>E</b>
CHECKED: <b>T. Yln</b>	DATE: <b>09/15/06</b>	CAGE CODE : <b>32559</b>	SHEET # <b>2 OF 4</b>
CAD GENERATED DOCUMENT, DO NOT MEASURE DRAWING.			

REV.	DESCRIPTION	DATE	APPROVED
	SEE SHEET#1.		


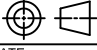
LED Assy. No.	Chip			Lens Appearance	Electro-Optical Data @ 20mA				Viewing Angle 2 θ ½ (Deg)	LED P/N	
	Material	Peak Wave Length	Emitted Color		If (mA)	Vf (V)		Iv (mcd)			
						MAX	TYP	MAX			TYP
PM3UBWC	GaN/SiC	470	BLUE	WATER CLEAR	30	4	4.5	400	30	3UBWC-0.6K	
PM3SGC	GaP/GaP	568	GREEN	WATER CLEAR	30	2.1	2.8	50	30	3SGC-S	
PM3SGD	GaP/GaP	568	GREEN	DIFFUSED	30	2.1	2.8	30	40	3SGD-S	
PM3SGT	GaP/GaP	568	GREEN	TINTED	30	2.1	2.8	50	30	3SGT-S	
PM3SYC	GaAsP/GaP	590	YELLOW	WATER CLEAR	30	2.0	2.8	50	30	3SYC-S	
PM3SYD	GaAsP/GaP	590	YELLOW	DIFFUSED	30	2.0	2.8	30	40	3SYD-S	
PM3SYT	GaAsP/GaP	590	YELLOW	TINTED	30	2.0	2.8	50	30	3SYT-S	
PM3SAC	AlGaInP	605	AMBER	WATER CLEAR	30	1.8	2.4	300	30	3SAC-S	
PM3SAD	AlGaInP	605	AMBER	DIFFUSED	30	1.8	2.4	100	40	3SAD-S	
PM3SAT	AlGaInP	605	AMBER	TINTED	30	1.8	2.4	300	30	3SAT-S	
PM3SRC	GaAlAs/GaAs	645	SUPER RED	WATER CLEAR	30	1.7	2.4	60	30	3SRC-S	
PM3SRD	GaAlAs/GaAs	645	SUPER RED	DIFFUSED	30	1.7	2.4	40	40	3SRD-S	
PM3SRT	GaAlAs/GaAs	645	SUPER RED	TINTED	30	1.7	2.4	60	30	3SRT-S	
PM3UGC	AlGaInP	570	GREEN	WATER CLEAR	30	2.1	2.4	200	30	3UGC-S	
PM3UGC	AlGaInP	570	GREEN	WATER CLEAR	30	2.1	2.4	300	30	3UGC-S	
PM3UYC	AlGaInP	590	YELLOW	WATER CLEAR	30	2.0	2.4	300	30	3UYC-S	
PM3UYC	AlGaInP	590	YELLOW	WATER CLEAR	30	2.0	2.4	400	30	3UYC-S	
PM3UUYC	AlGaInP	590	YELLOW	WATER CLEAR	30	2.0	2.4	600	30	3UUYC-S	
PM3UOC	AlGaInP	625	ORANGE	WATER CLEAR	30	1.8	2.4	300	30	3UOC-S	
PM3UOC	AlGaInP	625	ORANGE	WATER CLEAR	30	1.8	2.4	400	30	3UOC-S	
PM3URC	GaAlAs/GaAs	645	RED	WATER CLEAR	30	1.7	2.4	200	30	3URC-S	
PM3SURC	AlGaInP	640	RED	WATER CLEAR	30	1.8	2.4	200	30	3SURC-S	
PM3UWC	InGaN/Sapphire	6500K	WHITE	WATER CLEAR	30	3.4	3.8	1000	30	3UWC1.030C	

STANDARD TOLERANCE ( UNLESS OTHERWISE SPECIFIED ) ±10% ALL VALUES		 <b>BIVAR</b> <sup>®</sup> 4 THOMAS, IRVINE, CA. 92618 TEL: (949) 951-8808 FAX: (949) 951-3974	
ANGULAR X° ± 5°			
		TITLE: STD PANEL MOUNT INDICATORS	
DESIGNED: <b>Dan Beckman</b>	DATE: <b>09/15/06</b>	PART NO: <b>PM3XXX</b>	REVISION: <b>E</b>
CHECKED: <b>T. Yin</b>	DATE: <b>09/15/06</b>	CAGE CODE : <b>32559</b>	SHEET # <b>3 OF 4</b>
CAD GENERATED DOCUMENT, DO NOT MEASURE DRAWING.			

REV.	DESCRIPTION	DATE	APPROVED
	SEE SHEET#1.		

LED Assy. No.	Chip			Lens Appearance	Absolute Max. Ratings			Electro-Optical Data @ 2mA			Viewing Angle 2 θ ½ (Deg)	LED P/N
	Material	Peak Wave Length λp(nm)	Emitted Color		Pd (mW)	If (mA)	Peak If(mA)	Vf (V)		Iv (mcd)		
								TYP	MAX	TYP		
PM3BWDL	GaN/siC	430	BLUE	DIFFUSED	20	7	-	3.8	4.2	2.5	40	3BWDL-S
PM3GDL	GaP/GaP	568	GREEN	DIFFUSED	10	7	-	2.1	2.6	2.0	40	3GDL-S
PM3PGDL	GaP/GaP	555	PURE GREEN	DIFFUSED	10	7	-	2.1	2.6	0.2	40	3PGDL-S
PM3YDL	GaAsP/GaP	590	YELLOW	DIFFUSED	10	7	-	2.0	2.6	2.0	40	3YDL-S
PM3ADL	GaAsP/GaP	605	AMBER	DIFFUSED	10	7	-	2.0	2.6	4.0	40	3ADL-S
PM3HDL	GaAsP/GaP	625	HE RED	DIFFUSED	10	7	-	2.0	2.6	2.5	40	3HDL-S
PM3RDL	GaP/GaP	700	RED	DIFFUSED	10	7	-	2.1	2.6	0.5	40	3RDL-S
PM3SRDL	GaAlAs/GaAs	645	RED	DIFFUSED	10	7	-	2.0	-	8.0	40	3SRDL-S

Assembly P/N	Peak Wave Length λp(nm)	Emitted Color	Lens Appearance	Electro-Optical Data				Viewing Angle 2 θ 1/2 (Deg)	LED P/N	
				If (mA)		Vf (V)				Iv (mcd)
				MAX	TYP	MAX	TYP			TYP
<b>5 Volt</b>				<b>Data @ 5V</b>						
PM3BWD5V	430	BLUE	DIFFUSED	-	-	5	10	35	3BWD5V-S	
PM3GC5V	568	GREEN	WATER CLEAR	-	-	5	40	20	3GC5V-S	
PM3GD5V	568	GREEN	DIFFUSED	-	-	5	25	35	3GD5V-S	
PM3GT5V	568	GREEN	TINTED	-	-	5	40	20	3GT5V-S	
PM3AD5V	605	AMBER	DIFFUSED	-	-	5	25	35	3AD5V-S	
PM3HD5V	625	HE RED	DIFFUSED	-	-	5	30	35	3HD5V-S	
PM3RD5V	700	RED	DIFFUSED	-	-	5	2	35	3RD5V-S	
PM3YD5V	590	YELLOW	DIFFUSED	-	-	5	20	35	3YD5V-S	
<b>12 Volt</b>				<b>Data @ 12V</b>						
PM3GC12V	568	GREEN	WATER CLEAR	-	-	12	40	20	3GC12V-S	
PM3GD12V	568	GREEN	DIFFUSED	-	-	12	25	35	2GD12V-S	
PM3HC12V	625	HE RED	WATER CLEAR	-	-	12	50	20	3HC12V-S	
PM3HD12V	625	HE RED	DIFFUSED	-	-	12	30	35	3HD12V-S	
PM3RC12V	700	RED	WATER CLEAR	-	-	12	6	20	3RC12V-S	
PM3RD12V	700	RED	DIFFUSED	-	-	12	2	35	3RD12V-S	
PM3YC12V	590	YELLOW	WATER CLEAR	-	-	12	40	20	3YC12V-S	
PM3YD12V	590	YELLOW	DIFFUSED	-	-	12	25	35	3YD12V-S	

STANDARD TOLERANCE ( UNLESS OTHERWISE SPECIFIED ) ±10% ALL VALUES		 <b>BIVAR</b> <sup>®</sup> 4 THOMAS, IRVINE, CA. 92618 TEL: (949) 951-8808 FAX: (949) 951-3974	
ANGULAR X° ± 5°			
		TITLE: STD PANEL MOUNT INDICATORS	
DESIGNED: <b>Dan Beckman</b>	DATE: <b>09/15/06</b>	PART NO: <b>PM3XXX</b>	REVISION: <b>E</b>
CHECKED: <b>T. Yin</b>	DATE: <b>09/15/06</b>	CAGE CODE : <b>32559</b>	SHEET # <b>4 OF 4</b>
CAD GENERATED DOCUMENT, DO NOT MEASURE DRAWING.			

## X-ON Electronics

Largest Supplier of Electrical and Electronic Components

*Click to view similar products for [LED Panel Mount Indicators](#) category:*

*Click to view products by [Bivar](#) manufacturer:*

Other Similar products are found below :

[607-3232-140F](#) [821-0331-503](#) [FL2870C8R](#) [FL2950WL7B](#) [FL2950WL8G](#) [FL589WL8R](#) [FL67C8R](#) [H8630FBBA3](#) [NL177WL2A](#)  
[NL177WL3G](#) [NL276C2A](#) [NL2950BWL3G](#) [NL589WL2R](#) [NL67C2C](#) [NL67C3R](#) [C480AABG3](#) [PB22BM41K](#) [PB22SIM40Y](#)  
[PB22SKRS31KC](#) [L32R-R2-2311](#) [L3353-MWRG](#) [L39UR-R24-2111](#) [L58D-G2-W](#) [L58D-Y2-W](#) [L59D-R12-W](#) [L59UD-R12-W](#) [L625DG](#)  
[L625DR](#) [LE177WL39007](#) [LH1048BSWL3702](#) [LH1048BWL3702](#) [LH382A](#) [LH677G](#) [LHM628A](#) [FL276WL7R](#) [FL2950BWL7R](#)  
[FL2950WL7R](#) [FL2950WL8R](#) [FL2950WL8R-12](#) [FL2951WL8G](#) [FL2951WL8R](#) [FL589C7R](#) [FL67WL8G](#) [MPC5BCW18.0](#) [556-1605-808F](#)  
[556-1705-809F](#) [556-3008-839F](#) [558-0201-818F](#) [559-0001-813F](#) [559-1301-801F](#)