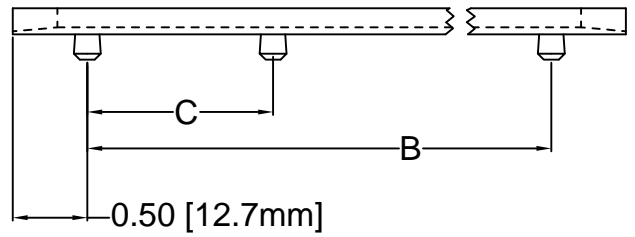
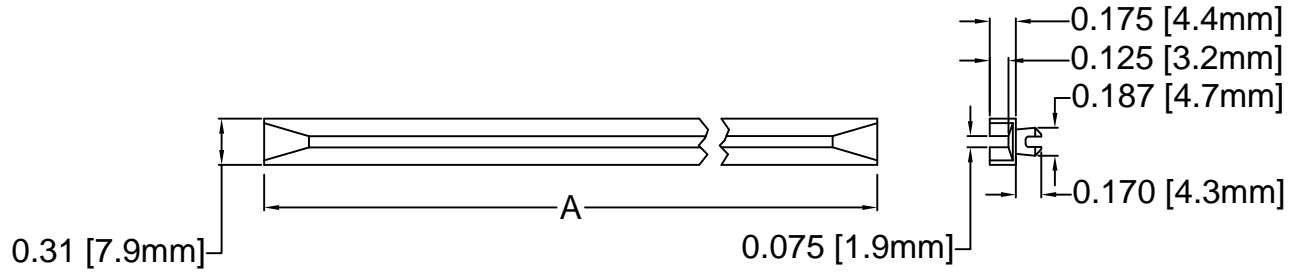
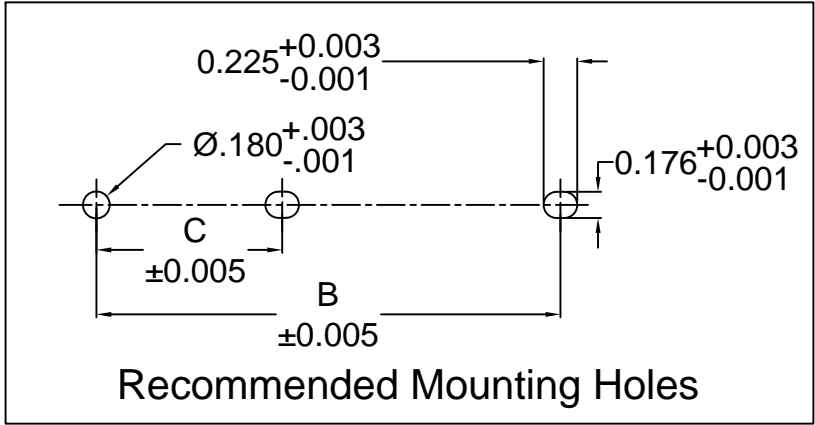


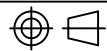
REV.	DESCRIPTION	DATE	APPROVED
J	Engineering Release	11/01/13	T. Y.
K	Removed Material Code	05/13/16	J. C.



PART NO.	A ±.032 (.8)	B ±.016 (.4)	C ±.008 (.2)
SDC-200	2.0 (50.8)	1.0 (25.4)	-
SDC-250	2.5 (63.5)	1.5 (38.1)	-
SDC-300	3.0 (76.2)	2.0 (50.8)	-
SDC-350	3.5 (88.9)	2.5 (63.5)	-
SDC-400	4.0 (101.6)	3.0 (76.2)	-
SDC-450	4.5 (114.3)	3.5 (88.9)	-
SDC-500	5.0 (127.0)	4.0 (101.6)	-
SDC-550	5.5 (139.7)	4.5 (114.3)	-
SDC-600	6.0 (152.4)	5.0 (127.0)	-
SDC-650	6.5 (165.1)	5.5 (139.7)	-
SDC-700	7.0 (177.8)	6.0 (152.4)	-
SDC-750	7.5 (190.5)	6.5 (165.1)	-
SDC-800	8.0 (203.2)	7.0 (177.8)	-
SDC-850	8.5 (215.9)	7.5 (190.5)	3.75 (95.3)
SDC-900	9.0 (228.6)	8.0 (203.2)	4.00 (101.6)
SDC-950	9.5 (241.3)	8.5 (215.9)	4.25 (108.0)
SDC-1000	10.0 (254.0)	9.0 (228.6)	4.50 (114.3)
SDC-1050	10.5 (266.7)	9.5 (241.3)	4.75 (120.7)
SDC-1100	11.0 (279.4)	10.0 (254.0)	5.00 (127.0)



3. ALL DIMENSIONS IN INCHES, UNLESS OTHERWISE SPECIFIED.
2. MATERIAL: NYLON 66, 94V-2, NATURAL.
1. GENERAL SPECIFICATIONS: BIVAR MOLDED COMPONENT SPECIFICATION BV00-E101.

STANDARD TOLERANCE (UNLESS OTHERWISE SPECIFIED)		BIVAR [®] 4 THOMAS, IRVINE, CA. 92618 TEL: (949) 951-8808 FAX: (949) 951-3974	
DECIMALS	ANGULAR		
.X ±.1	X° ± 1°	 TITLE: INTERCHANGEABLE SNAP-IN CARD GUIDE	
.XX ±.01			
.XXX ±.005		PART NO: SDC-XXX REVISION: K	
DESIGNED: D. Green	DATE: 11/26/02		
CHECKED: M. Chen	DATE: 11/26/02	CAGE CODE : 32559 SHEET # 1 OF 1	
CAD GENERATED DOCUMENT. DO NOT MEASURE DRAWING.			

X-ON Electronics

Largest Supplier of Electrical and Electronic Components

Click to view similar products for [Racks & Rack Cabinet Accessories](#) category:

Click to view products by [Bivar](#) manufacturer:

Other Similar products are found below :

[M00-PLN](#) [F2424](#) [8351-832-A-24](#) [9104](#) [9105](#) [PLFF2000](#) [H-9163-B](#) [1427C3](#) [HTS10](#) [PC-79](#) [SC10-3A](#) [SC4-28](#) [CG3-340S/12](#) [CP-001BK](#)
[M6123-4007-SS](#) [TS170](#) [LP40](#) [5261304-07](#) [CG3-160G](#) [7112C-PLN](#) [ALUM](#) [CM10](#) [8610-3124-S-26](#) [TS81](#) [7142](#) [GP134](#) [M6125-4007-A-24](#)
[M6127-4007-SS](#) [PBCOVER](#) [512](#) [AEG-4000G](#) [AEG-3000G](#) [HD99](#) [SR2-66A2](#) [FP10B4HP-1](#) [SR16-66A2](#) [FP52-2](#) [1406-1006-01](#) [29478](#)
[TS2535](#) [TS169-6](#) [CAC2](#) [HA19-3U](#) [BR-19-10-1](#) [TS180](#) [CG3-ESD](#) [SC11-1](#) [CFS-1.00/2.20](#) [HEC0800PB](#) [ZC633R](#) [140PLN](#)