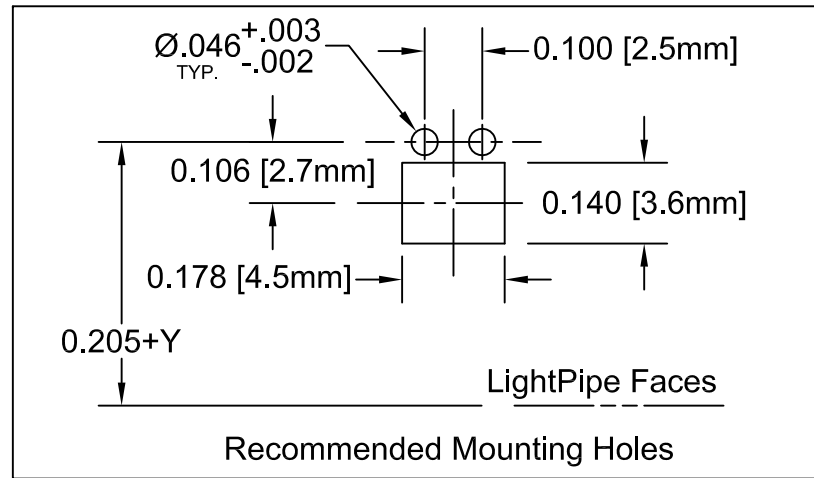
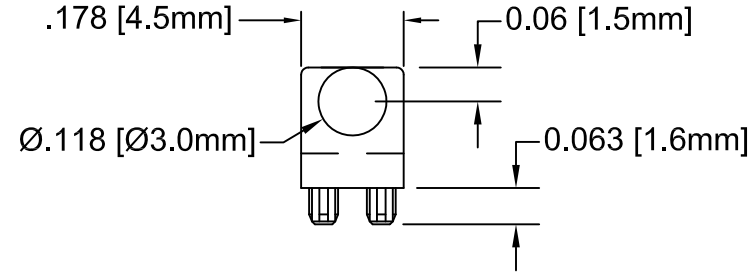
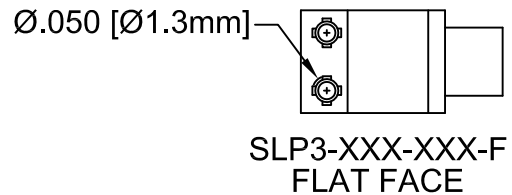
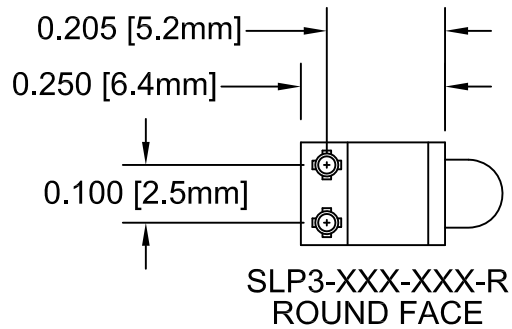
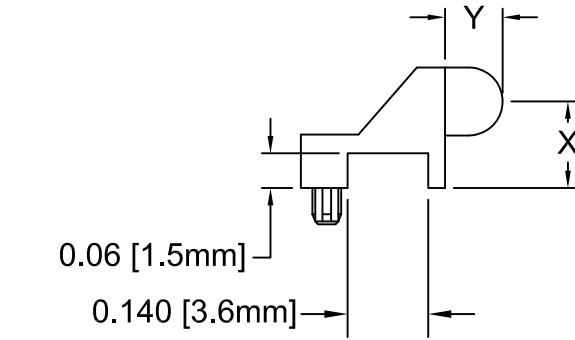
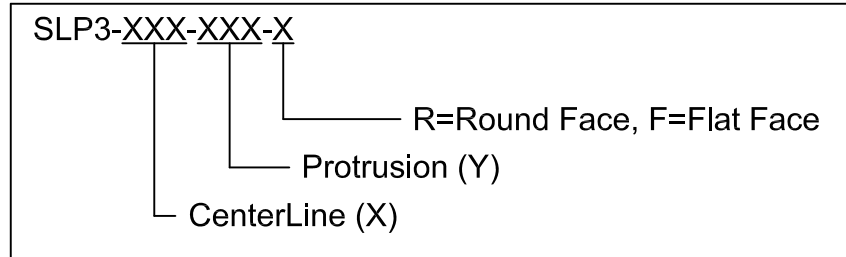


REV.	DESCRIPTION	DATE	APPROVED
C	Removed SLP3-150-XXX-X Spec.	06/04/08	M. C.
D	Title Revision	03/06/12	T. Y.
E	Added Part Offering List & Removed Raw Material Notes	10/11/13	G. W.
F	Added P/Ns onto Offering List	10/31/13	G. W.
G	Edit Dimension Typo on Part Offering List, page 3	11/25/13	G. W.



PART NUMBER DESIGNATION



3. ALL DIMENSIONS IN INCHES UNLESS OTHERWISE SPECIFIED
2. MATERIAL: POLYCARBONATE, 94V-HB, CLEAR. BIVAR MATERIAL CODE 49-CR.
1. GENERAL SPECIFICATIONS: BIVAR MOLDED COMPONENT SPECIFICATION BV00-E101.

STANDARD TOLERANCE (UNLESS OTHERWISE SPECIFIED)	
DECIMALS	ANGULAR
.X ± .1	X° ± 1°
.XX ± .01	
.XXX ± .005	



BIVAR[®]
 4 THOMAS, IRVINE, CA. 92618
 TEL: (949) 951-8808 FAX: (949) 951-3974

TITLE: LIGHT PIPE
 90° VARIABLE CENTERLINE



DESIGNED: Michael Chen	DATE: 04/14/03	PART NO: SLP3-XXX-XXX-X	REVISION: G
CHECKED: D. Green	DATE: 04/14/03	CAGE CODE : 32559	SHEET # 1 OF 3

CAD GENERATED DOCUMENT, DO NOT MEASURE DRAWING.

REV.	DESCRIPTION	DATE	APPROVED
	See Sheet #1		

STANDARD OFFERING LIST


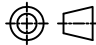
PART NUMBER	X DIMENSION	Y DIMENSION	FACE
SLP3-200-100-F	0.200" [5.1mm]	0.100" [2.5mm]	FLAT FACE
SLP3-200-100-R	0.200" [5.1mm]	0.100" [2.5mm]	ROUND FACE
SLP3-200-150-F	0.200" [5.1mm]	0.150" [3.8mm]	FLAT FACE
SLP3-200-150-R	0.200" [5.1mm]	0.150" [3.8mm]	ROUND FACE
SLP3-200-200-R	0.200" [5.1mm]	0.200" [5.1mm]	ROUND FACE
SLP3-200-250-F	0.200" [5.1mm]	0.250" [6.4mm]	FLAT FACE
SLP3-250-100-F	0.250" [6.35mm]	0.100" [2.5mm]	FLAT FACE
SLP3-250-100-R	0.250" [6.35mm]	0.100" [2.5mm]	ROUND FACE
SLP3-300-100-F	0.300" [7.6mm]	0.100" [2.5mm]	FLAT FACE
SLP3-300-100-R	0.300" [7.6mm]	0.100" [2.5mm]	ROUND FACE
SLP3-300-250-F	0.300" [7.6mm]	0.250" [6.4mm]	FLAT FACE
SLP3-300-250-R	0.300" [7.6mm]	0.250" [6.4mm]	ROUND FACE
SLP3-300-450-F	0.300" [7.6mm]	0.450" [11.4mm]	FLAT FACE
SLP3-300-450-R	0.300" [7.6mm]	0.450" [11.4mm]	ROUND FACE
SLP3-350-100-F	0.350" [8.9mm]	0.100" [2.5mm]	FLAT FACE
SLP3-350-100-R	0.350" [8.9mm]	0.100" [2.5mm]	ROUND FACE

STANDARD TOLERANCE (UNLESS OTHERWISE SPECIFIED)		 BIVAR [®] 4 THOMAS, IRVINE, CA. 92618 TEL: (949) 951-8808 FAX: (949) 951-3974	
DECIMALS	ANGULAR		
.X ± .1	X° ± 1°	 TITLE: LIGHT PIPE 90° VARIABLE CENTERLINE	
.XX ± .01			
.XXX ± .005			
DESIGNED: Michael Chen	DATE: 04/14/03	PART NO: SLP3-XXX-XXX-X	REVISION: G
CHECKED: D. Green	DATE: 04/14/03	CAGE CODE : 32559	SHEET # 2 OF 3
CAD GENERATED DOCUMENT, DO NOT MEASURE DRAWING.			

REV.	DESCRIPTION	DATE	APPROVED
	See Sheet #1		

STANDARD OFFERING LIST

PART NUMBER	X DIMENSION	Y DIMENSION	FACE
SLP3-400-100-F	0.400"[10.2mm]	0.100" [2.5mm]	FLAT FACE
SLP3-400-100-R	0.400"[10.2mm]	0.100" [2.5mm]	ROUND FACE
SLP3-400-250-F	0.400"[10.2mm]	0.250"[6.4mm]	FLAT FACE
SLP3-400-450-R	0.400"[10.2mm]	0.450"[11.4mm]	ROUND FACE
SLP3-450-100-F	0.450"[11.4mm]	0.100" [2.5mm]	FLAT FACE
SLP3-450-100-R	0.450"[11.4mm]	0.100" [2.5mm]	ROUND FACE
SLP3-500-100-F	0.500"[12.7mm]	0.100" [2.5mm]	FLAT FACE
SLP3-500-100-R	0.500"[12.7mm]	0.100" [2.5mm]	ROUND FACE
SLP3-500-250-F	0.500"[12.7mm]	0.250"[6.4mm]	FLAT FACE
SLP3-500-250-R	0.500"[12.7mm]	0.250"[6.4mm]	ROUND FACE
SLP3-500-400-R	0.500"[12.7mm]	0.400"[10.2mm]	ROUND FACE
SLP3-500-450-R	0.500"[12.7mm]	0.450"[11.4mm]	ROUND FACE
SLP3-550-100-F	0.550"[14.00mm]	0.100" [2.5mm]	FLAT FACE
SLP3-550-100-R	0.550"[14.00mm]	0.100" [2.5mm]	ROUND FACE
SLP3-600-100-F	0.600"[15.2mm]	0.100" [2.5mm]	FLAT FACE
SLP3-600-100-R	0.600"[15.2mm]	0.100" [2.5mm]	ROUND FACE
SLP3-600-450-R	0.600"[15.2mm]	0.450"[11.4mm]	ROUND FACE
SLP3-650-100-F	0.650"[16.5mm]	0.100" [2.5mm]	FLAT FACE
SLP3-650-100-R	0.650"[16.5mm]	0.100" [2.5mm]	ROUND FACE
SLP3-700-100-F	0.700"[17.8mm]	0.100" [2.5mm]	FLAT FACE
SLP3-700-100-R	0.700"[17.8mm]	0.100" [2.5mm]	ROUND FACE
SLP3-700-450-R	0.700"[17.8mm]	0.450"[11.4mm]	ROUND FACE

STANDARD TOLERANCE (UNLESS OTHERWISE SPECIFIED)		 BIVAR [®] 4 THOMAS, IRVINE, CA. 92618 TEL: (949) 951-8808 FAX: (949) 951-3974	
DECIMALS	ANGULAR		
.X ±.1	X° ± 1°	 TITLE: LIGHT PIPE 90° VARIABLE CENTERLINE	
.XX ± .01			
.XXX ± .005			
DESIGNED: Michael Chen	DATE: 04/14/03	PART NO: SLP3-XXX-XXX-X	REVISION: G
CHECKED: D. Green	DATE: 04/14/03	CAGE CODE : 32559	SHEET # 3 OF 3
CAD GENERATED DOCUMENT, DO NOT MEASURE DRAWING.			

X-ON Electronics

Largest Supplier of Electrical and Electronic Components

Click to view similar products for [LED Light Pipes](#) category:

Click to view products by [Bivar](#) manufacturer:

Other Similar products are found below :

[1367627-1](#) [SLP3-300-450-F](#) [SLP3-400-450-R](#) [LPA-C011301S-6](#) [LPF-C011306S](#) [FLP25-1.95](#) [VLP-640-F](#) [LPA-C011301S-5.4](#) [LPA-R051171S-12](#) [LPA-S011331S](#) [515-1027-803F](#) [515-1217F](#) [SLP3-150-300-R](#) [SLP3-500-450-R](#) [515-1064-810F](#) [FLPV-SG](#) [BDL-1187](#) [7511A41](#) [7511A87-500](#) [FLPV-SBC](#) [5151064802F](#) [5151-192-0055-0DF](#) [LPF-R011340S](#) [515-1166-801F](#) [FLPF-6.0](#) [PM4-C1522-3.70](#) [LC-11.25](#) [CLP-1214](#) [515-1064-808F](#) [FLX3_05](#) [515-1192-0025-0DF](#) [HS LC-H-D2/ R2XC1-2 54](#) [515-1192-80-3DF](#) [1282.2600](#) [1296.2004](#) [PBLP-1001-1](#) [SZ1-10.00-A220-F4P54](#) [SZ1-10.00-A220-F4P](#) [LC2-4.1](#) [1296.7042](#) [SF4-2.5-F5P](#) [PLP5-2-625-54](#) [FLP25-13.5](#) [1271.2002](#) [1272.0030](#) [1276.2004](#) [1281.1001-8MM](#) [1282.1300](#) [1296.1034](#) [1296.2022](#)