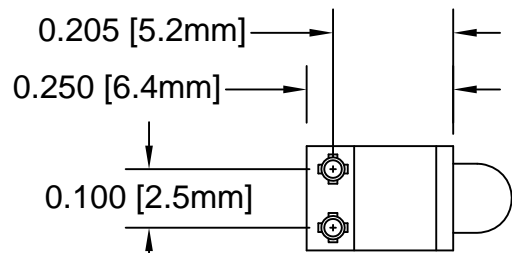
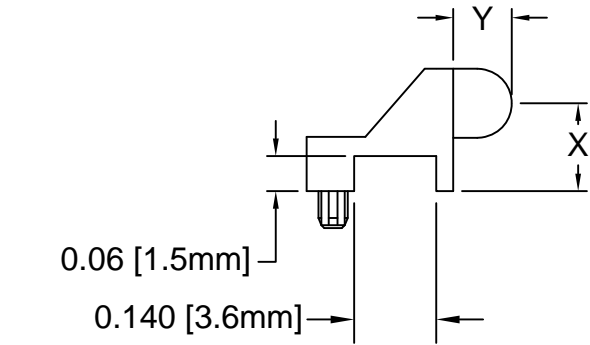
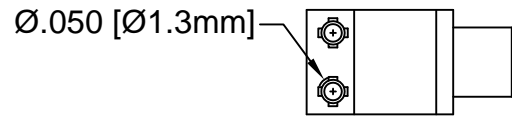


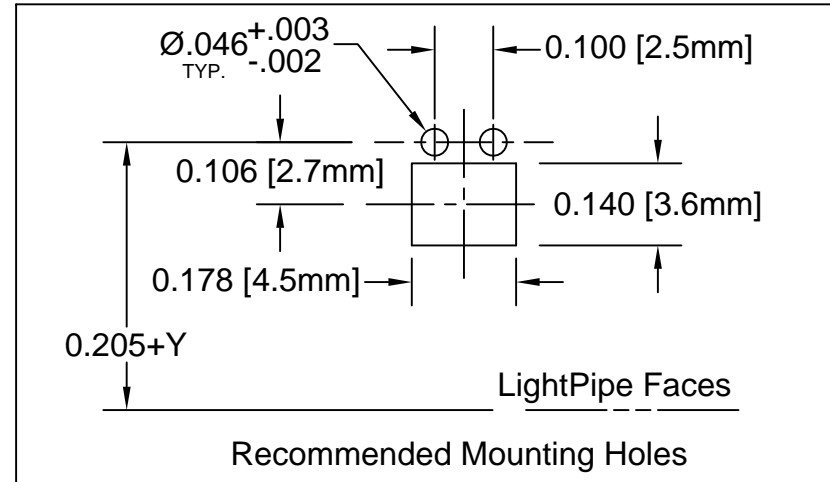
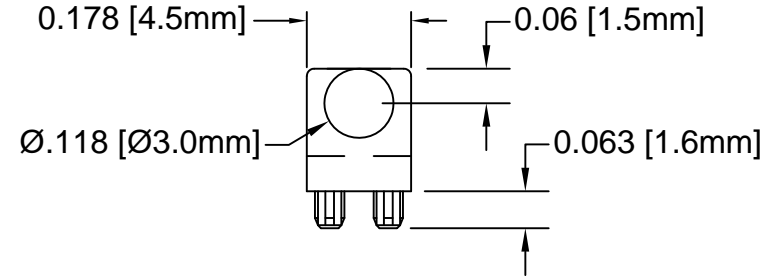
REV.	DESCRIPTION	DATE	APPROVED
E	Added Part Offering List & Removed Material Note	10/11/13	G. W.
F	Added P/Ns onto Offering List	10/31/13	G. W.
G	Edit Dimension Typo on Part Offering List, P.3	11/25/13	G. W.
H	Added Color Options, Sheet #4	02/02/16	J. C.
J	Added SLP3-350-200-F & SLP3-350-350-F, P.2	08/25/16	J. C.



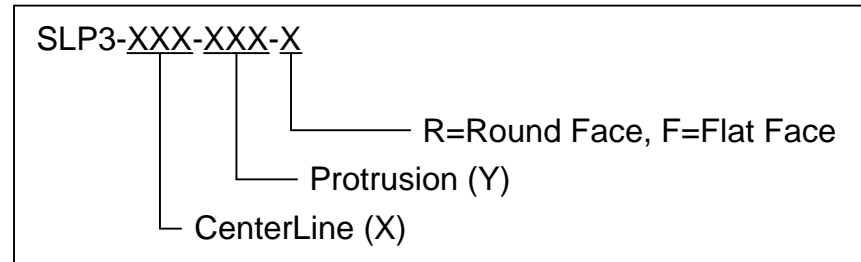
SLP3-XXX-XXX-R
ROUND FACE



SLP3-XXX-XXX-F
FLAT FACE



PART NUMBER DESIGNATION


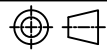


- ALL DIMENSIONS IN INCHES UNLESS OTHERWISE SPECIFIED
- MATERIAL: POLYCARBONATE, 94V-0, CLEAR.
- GENERAL SPECIFICATIONS: BIVAR MOLDED COMPONENT SPECIFICATION BV00-E101.

STANDARD TOLERANCE (UNLESS OTHERWISE SPECIFIED)		BIVAR®	
DECIMALS	ANGULAR	4 THOMAS, IRVINE, CA. 92618	
.X ± .1	X° ± 1°	TEL: (949) 951-8808 FAX: (949) 951-3974	
.XX ± .01		TITLE: LIGHT PIPE	
.XXX ± .005		90° VARIABLE CENTERLINE	
DESIGNED: M. Chen	DATE: 04/14/03	PART NO: SLP3-XXX-XXX-X	REVISION: J
CHECKED: D. Green	DATE: 04/14/03	CAGE CODE : 32559	SHEET # 1 OF 4
CAD GENERATED DOCUMENT. DO NOT MEASURE DRAWING.			


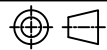
REV.	DESCRIPTION	DATE	APPROVED
	SEE SHEET #1		

STANDARD OFFERING LIST			
PART NUMBER	X DIMENSION	Y DIMENSION	FACE
SLP3-200-100-F	0.200" [5.1mm]	0.100" [2.5mm]	FLAT FACE
SLP3-200-100-R	0.200" [5.1mm]	0.100" [2.5mm]	ROUND FACE
SLP3-200-150-F	0.200" [5.1mm]	0.150" [3.8mm]	FLAT FACE
SLP3-200-150-R	0.200" [5.1mm]	0.150" [3.8mm]	ROUND FACE
SLP3-200-200-R	0.200" [5.1mm]	0.200" [5.1mm]	ROUND FACE
SLP3-200-250-F	0.200" [5.1mm]	0.250" [6.4mm]	FLAT FACE
SLP3-250-100-F	0.250" [6.4mm]	0.100" [2.5mm]	FLAT FACE
SLP3-250-100-R	0.250" [6.4mm]	0.100" [2.5mm]	ROUND FACE
SLP3-300-100-F	0.300" [7.6mm]	0.100" [2.5mm]	FLAT FACE
SLP3-300-100-R	0.300" [7.6mm]	0.100" [2.5mm]	ROUND FACE
SLP3-300-250-F	0.300" [7.6mm]	0.250" [6.4mm]	FLAT FACE
SLP3-300-250-R	0.300" [7.6mm]	0.250" [6.4mm]	ROUND FACE
SLP3-300-450-F	0.300" [7.6mm]	0.450" [11.4mm]	FLAT FACE
SLP3-300-450-R	0.300" [7.6mm]	0.450" [11.4mm]	ROUND FACE
SLP3-350-100-F	0.350" [8.9mm]	0.100" [2.5mm]	FLAT FACE
SLP3-350-100-R	0.350" [8.9mm]	0.100" [2.5mm]	ROUND FACE
SLP3-350-200-F	0.350" [8.9mm]	0.200" [5.1mm]	FLAT FACE
SLP3-350-350-F	0.350" [8.9mm]	0.350" [8.9mm]	FLAT FACE
SLP3-400-100-F	0.400" [10.2mm]	0.100" [2.5mm]	FLAT FACE
SLP3-400-100-R	0.400" [10.2mm]	0.100" [2.5mm]	ROUND FACE
SLP3-400-250-F	0.400" [10.2mm]	0.250" [6.4mm]	FLAT FACE
SLP3-400-450-R	0.400" [10.2mm]	0.450" [11.4mm]	ROUND FACE

STANDARD TOLERANCE (UNLESS OTHERWISE SPECIFIED)		 4 THOMAS, IRVINE, CA. 92618 TEL: (949) 951-8808 FAX: (949) 951-3974	
DECIMALS	ANGULAR		
.X ± .1	X° ± 1°		TITLE: LIGHT PIPE 90° VARIABLE CENTERLINE
.XX ± .01			DESIGNED: M. Chen
.XXX ± .005		CHECKED: D. Green	DATE: 04/14/03
		PART NO: SLP3-XXX-XXX-X	REVISION: J
		CAGE CODE : 32559	SHEET # 2 OF 4
CAD GENERATED DOCUMENT. DO NOT MEASURE DRAWING.			

REV.	DESCRIPTION	DATE	APPROVED
	SEE SHEET #1		

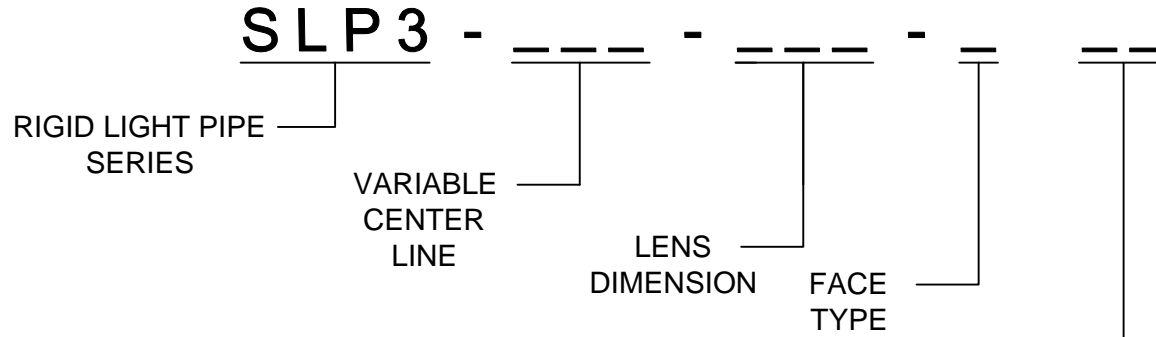
STANDARD OFFERING LIST			
PART NUMBER	X DIMENSION	Y DIMENSION	FACE
SLP3-450-100-F	0.450" [11.4mm]	0.100" [2.5mm]	FLAT FACE
SLP3-450-100-R	0.450" [11.4mm]	0.100" [2.5mm]	ROUND FACE
SLP3-500-100-F	0.500" [12.7mm]	0.100" [2.5mm]	FLAT FACE
SLP3-500-100-R	0.500" [12.7mm]	0.100" [2.5mm]	ROUND FACE
SLP3-500-250-F	0.500" [12.7mm]	0.250" [6.4mm]	FLAT FACE
SLP3-500-250-R	0.500" [12.7mm]	0.250" [6.4mm]	ROUND FACE
SLP3-500-400-R	0.500" [12.7mm]	0.400" [10.2mm]	ROUND FACE
SLP3-500-450-R	0.500" [12.7mm]	0.450" [11.4mm]	ROUND FACE
SLP3-550-100-F	0.550" [14.0mm]	0.100" [2.5mm]	FLAT FACE
SLP3-550-100-R	0.550" [14.0mm]	0.100" [2.5mm]	ROUND FACE
SLP3-600-100-F	0.600" [15.2mm]	0.100" [2.5mm]	FLAT FACE
SLP3-600-100-R	0.600" [15.2mm]	0.100" [2.5mm]	ROUND FACE
SLP3-600-450-R	0.600" [15.2mm]	0.450" [11.4mm]	ROUND FACE
SLP3-650-100-F	0.650" [16.5mm]	0.100" [2.5mm]	FLAT FACE
SLP3-650-100-R	0.650" [16.5mm]	0.100" [2.5mm]	ROUND FACE
SLP3-700-100-F	0.700" [17.8mm]	0.100" [2.5mm]	FLAT FACE
SLP3-700-100-R	0.700" [17.8mm]	0.100" [2.5mm]	ROUND FACE
SLP3-700-450-R	0.700" [17.8mm]	0.450" [11.4mm]	ROUND FACE

STANDARD TOLERANCE (UNLESS OTHERWISE SPECIFIED)		 4 THOMAS, IRVINE, CA. 92618 TEL: (949) 951-8808 FAX: (949) 951-3974	
DECIMALS	ANGULAR		
.X ± .1	X° ± 1°		TITLE: LIGHT PIPE 90° VARIABLE CENTERLINE
.XX ± .01			DESIGNED: M. Chen
.XXX ± .005		CHECKED: D. Green	DATE: 04/14/03
		PART NO: SLP3-XXX-XXX-X	REVISION: J
		CAGE CODE : 32559	SHEET # 3 OF 4
CAD GENERATED DOCUMENT. DO NOT MEASURE DRAWING.			

OTHER AVAILABLE COLORS

* SEE TABLE FOR ORDERING INFORMATION



REV.	DESCRIPTION	DATE	APPROVED
	SEE SHEET #1		



COLOR	Order Code
BLUE	BE
BLACK	BK
GREEN	GN
GRAY	GY
RED	RD
YELLOW	YW

NOTE: LEAVE ORDER CODE BLANK IF NO COLOR IS DESIRED.

4. PARTS ARE DYED TO COLOR UPON REQUEST.

STANDARD TOLERANCE (UNLESS OTHERWISE SPECIFIED) DECIMALS ANGULAR		 4 THOMAS, IRVINE, CA. 92618 TEL: (949) 951-8808 FAX: (949) 951-3974		
				TITLE: LIGHT PIPE 90° VARIABLE CENTERLINE
DESIGNED: K. Aukshunas	DATE: 01/25/16	PART NO: SLP3-XXX-XXX-X		REVISION: J
CHECKED: J. Chiang	DATE: 01/25/16	CAGE CODE : 32559	SHEET # 4 OF 4	
CAD GENERATED DOCUMENT. DO NOT MEASURE DRAWING.				

X-ON Electronics

Largest Supplier of Electrical and Electronic Components

Click to view similar products for [LED Light Pipes](#) category:

Click to view products by [Bivar](#) manufacturer:

Other Similar products are found below :

[1367627-1](#) [SLP3-300-450-F](#) [SLP3-400-450-R](#) [LPA-C011301S-6](#) [LPF-C011306S](#) [FLP25-1.95](#) [VLP-640-F](#) [LPA-C011301S-5.4](#) [LPA-R051171S-12](#) [LPA-S011331S](#) [515-1027-803F](#) [515-1217F](#) [SLP3-150-300-R](#) [SLP3-500-450-R](#) [515-1064-810F](#) [FLPV-SG](#) [BDL-1187](#) [7511A41](#) [7511A87-500](#) [FLPV-SBC](#) [5151064802F](#) [5151-192-0055-0DF](#) [LPF-R011340S](#) [515-1166-801F](#) [FLPF-6.0](#) [PM4-C1522-3.70](#) [LC-11.25](#) [CLP-1214](#) [515-1064-808F](#) [FLX3_05](#) [515-1192-0025-0DF](#) [HS LC-H-D2/ R2XC1-2 54](#) [515-1192-80-3DF](#) [1282.2600](#) [1296.2004](#) [PBLP-1001-1](#) [SZ1-10.00-A220-F4P54](#) [SZ1-10.00-A220-F4P](#) [LC2-4.1](#) [1296.7042](#) [SF4-2.5-F5P](#) [PLP5-2-625-54](#) [FLP25-13.5](#) [1271.2002](#) [1272.0030](#) [1276.2004](#) [1281.1001-8MM](#) [1282.1300](#) [1296.1034](#) [1296.2022](#)