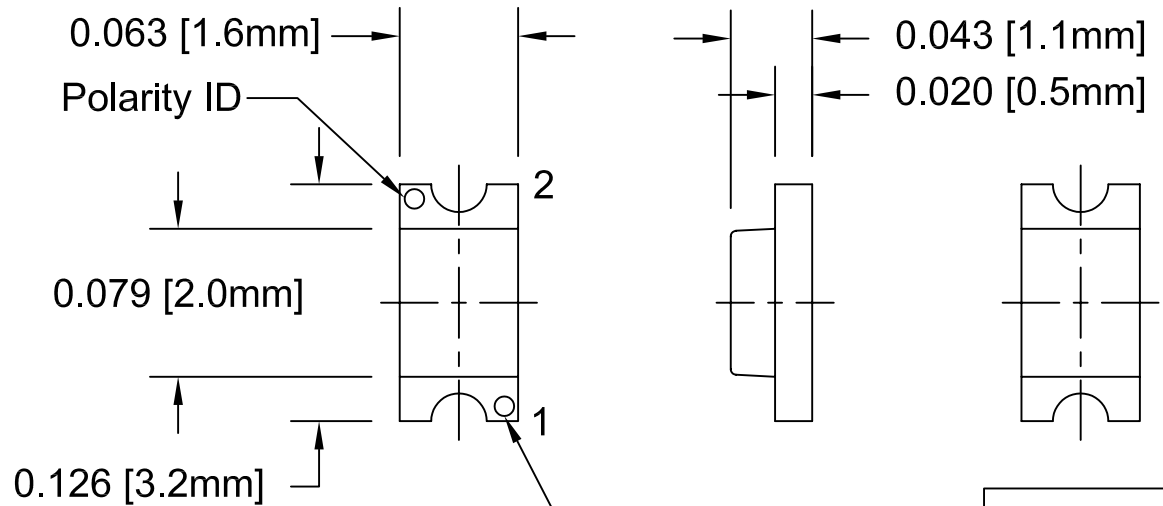
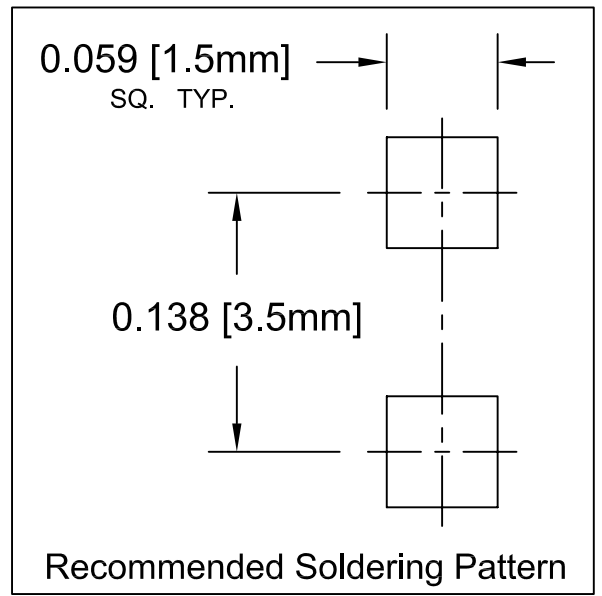
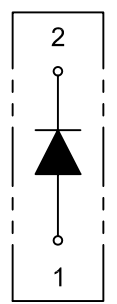


REV.	DESCRIPTION	DATE	APPROVED
A	Engineering Update w/o Changes	03/10/04	M. C.
B	Image Orientation Update w/o Changes	02/23/05	M. C.
C	Updated SM1206UWC Lens Appearance	04/24/08	M. C.
D	Updated Anode Marking for SM1206HC and SM1206SRC	05/21/08	M. C.





*Anode Marking See P.2



ABSOLUTE MAXIMUM RATINGS (Ta=25° C)


REVERSE VOLTAGE	_____	5V
REVERSE CURRENT	_____	100uA
OPERATING TEMPERATURE RANGE	_____	-25° C - 85° C
STORAGE TEMPERATURE	_____	-30° C - 100° C
LEAD SOLDERING TEMPERATURE(1/16" FROM BODY)	_____	260° C FOR 5 SECONDS

STANDARD TOLERANCE (UNLESS OTHERWISE SPECIFIED)		 BIVAR [®] 4 THOMAS, IRVINE, CA. 92618 TEL: (949) 951-8808 FAX: (949) 951-3974	
DECIMALS	ANGULAR		
.X ±.1	X° ± 1°		
.XX ±.02		 TITLE: SM1206 SERIES	
.XXX ±.010			DESIGNED: David Green
		DATE: 04/28/04	PART NO: SM1206XXC
		CHECKED: Ty Yin	REVISION: D
		DATE: 04/28/04	CAGE CODE : 32559 SHEET # 1 OF 3
CAD GENERATED DOCUMENT, DO NOT MEASURE DRAWING.			

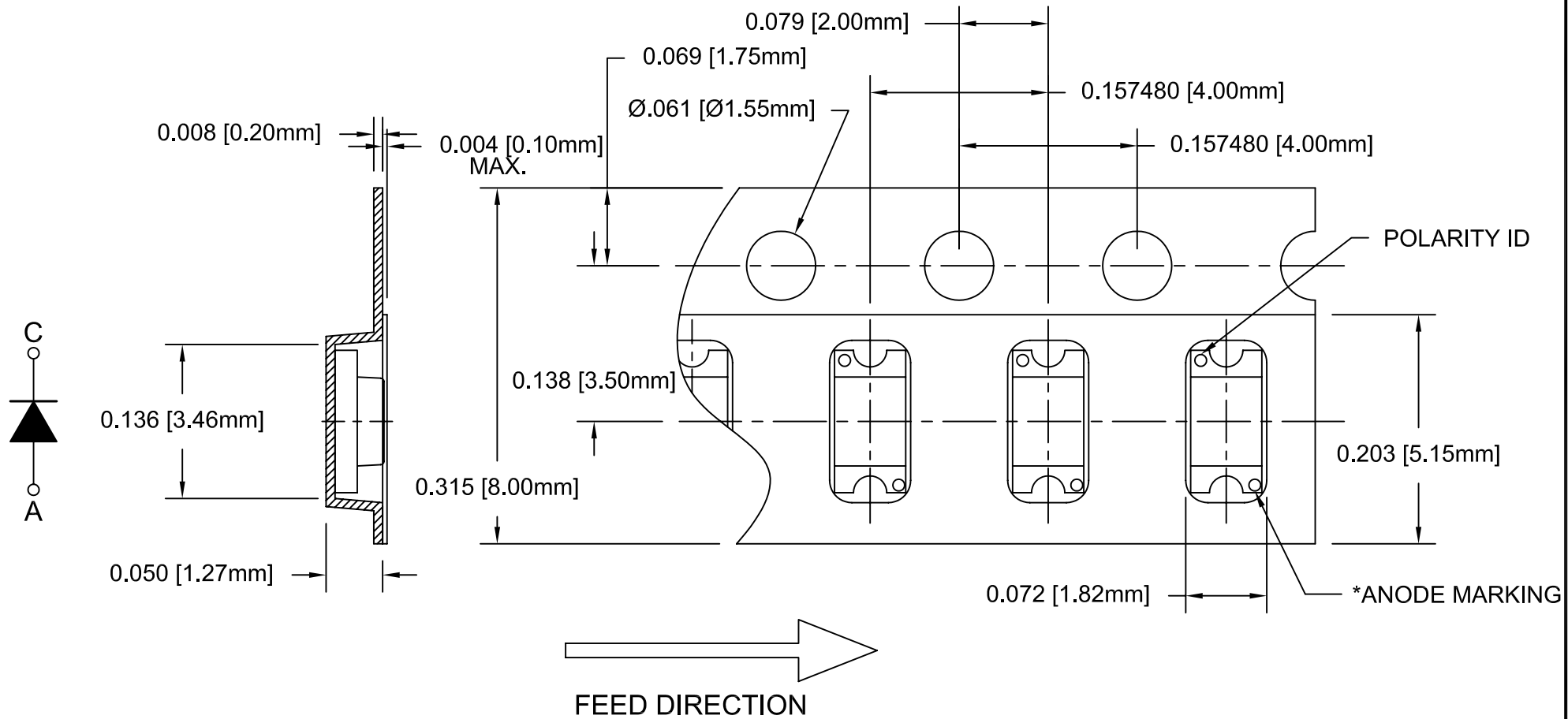
REV.	DESCRIPTION	DATE	APPROVED
	SEE SHEET#1.		

LED Part No.	Chip			Lens Appearance	Absolute Max. Ratings				Electro-Optical Data @ 20m A			Viewing Angle 2θ ½ (deg)
	Material	Peak Wave Length (nm)	Emitted Color		Δλ (nm)	Pd (mW)	If (mA)	Peak If(mA)	Vf (V)		Iv (mcd)	
									TYP	MAX	TYP	
SM1206BWC	GaN/SiC	430	SUPER BLUE	WATER CLEAR	65	70	15	150	3.8	4.5	20	140
SM1206UBWC	InGaN/SiC	470	ULTRA BLUE	WATER CLEAR	30	84	20	100	3.5	4.0	90	140
SM1206PGC	GaP	555	PURE GREEN	WATER CLEAR	25	100	30	150	2.2	2.6	2	140
SM1206GC	GaP	568	GREEN	WATER CLEAR	30	100	30	150	2.2	2.6	15	140
SM1206YC	GaAsP/GaP	585	YELLOW	WATER CLEAR	35	100	30	150	2.1	2.6	15	140
SM1206UYC	AlGaInP	588	ULTRA YELLOW	WATER CLEAR	15	100	30	150	2.0	2.6	60	140
SM1206AC	GaAsP/GaP	610	AMBER	WATER CLEAR	35	100	30	150	2.0	2.6	20	140
SM1206UOC	AlGaInP	620	ULTRA ORANGE	WATER CLEAR	17	100	30	150	2.0	2.6	75	140
SM1206HC*	GaAsP/GaP	635	HE RED	WATER CLEAR	45	100	30	150	2.0	2.6	20	140
SM1206SRC*	GaAlAs/GaAs	660	SUPER RED	WATER CLEAR	20	60	30	150	1.7	2.6	30	140
SM1206URC	GaAlAs/GaAs	660	ULTRA RED	WATER CLEAR	20	80	30	150	2.0	2.6	45	140
SM1206RC	GaP	700	RED	WATER CLEAR	90	50	15	50	2.2	2.6	3	140
SM1206UWC	InGaN	X=.29 Y=.30	WHITE	YELLOW	-	84	20	100	3.5	4.0	135	140

*ANODE MARKING

STANDARD TOLERANCE (UNLESS OTHERWISE SPECIFIED) ±10% ALL VALUES		ANGULAR X° ± 5°		 BIVAR [®] 4 THOMAS, IRVINE, CA. 92618 TEL: (949) 951-8808 FAX: (949) 951-3974	
DESIGNED: David Green		DATE: 04/28/04			
CHECKED: T. Yin		DATE: 04/28/04		PART NO: SM1206XXC	
				REVISION: D	
				CAGE CODE : 32559 SHEET # 2 OF 3	
CAD GENERATED DOCUMENT, DO NOT MEASURE DRAWING.					

REV.	DESCRIPTION	DATE	APPROVED
	See Sheet #1.		



2. UNLESS OTHERWISE SPECIFIED,
PACKAGING TO COMPLY WITH EIA-481-B
1. 3000 pcs PER REEL

STANDARD TOLERANCE (UNLESS OTHERWISE SPECIFIED)		BIVAR®	
DECIMALS	ANGULAR	4 THOMAS, IRVINE, CA. 92618	
.X ± .1	X° ± 1°	TEL: (949) 951-8808 FAX: (949) 951-3974	
.XX ± .02		TITLE: SM1206 SERIES	
.XXX ± .010		DESIGNED: David Green	DATE: 04/28/04
		CHECKED: T. Yin	DATE: 04/28/04
		PART NO: SM1206XXC	REVISION: D
		CAGE CODE: 32559	SHEET # 3 OF 3
		CAD GENERATED DOCUMENT, DO NOT MEASURE DRAWING.	

X-ON Electronics

Largest Supplier of Electrical and Electronic Components

Click to view similar products for [Standard LEDs - SMD category](#):

Click to view products by [Bivar manufacturer](#):

Other Similar products are found below :

[LTST-C19GD2WT](#) [LTST-N683GBEW](#) [LTW-170ZDC](#) [LTW-M140SZS40](#) [598-8110-100F](#) [598-8170-100F](#) [598-8610-202F](#) [67-22VRVGC/TR8](#) [AAAF5060QBFSEEZGS](#) [HLMP-6305-L0011](#) [ALMD-LB36-SV002](#) [APT1608QGW](#) [15-21UYC/S530-A3/TR8](#) [EASV1803BA0](#) [LG M67K-H1J2-24-0-2-R18-Z](#) [LS A676-P2S1-1](#) [SML-512VWT86A](#) [SML-LX0606SISUGC/A](#) [SML-LXL1307SRC-TR](#) [SML-LXR851SIUPGUBC](#) [LT1ED53A](#) [FAT801-S](#) [AM27ZGC03](#) [APB3025SGNC](#) [APFA3010SURKCGKQBDC](#) [APHK1608VGCA](#) [APT2012QGW](#) [CLX6D-FKB-CN1R1H1BB7D3D3](#) [LTST-C250KGKT](#) [LTW-020ZDCG](#) [LTW-21TS5](#) [LTW-220DS5](#) [JANTXM19500/521-02](#) [UYGT801-S](#) [42-21UYC/S530-A3/TR8](#) [LO T67F-V1AB-24-1](#) [YGFR411-H](#) [SML-LX0402IC-TR](#) [CMDA20AYAA7D1S](#) [CMDA16AYDR7A1X](#) [339-1SURYGW/S530-A2](#) [598-8040-100F](#) [598-8070-100F](#) [598-8140-100F](#) [598-8610-200F](#) [EAPL3527GA5](#) [67-11/BHC-M1N2B8Y/2A0](#) [SML-LXL1209SYC/ATR](#) [EASV3020YGA0](#) [EAST16086YA5](#)