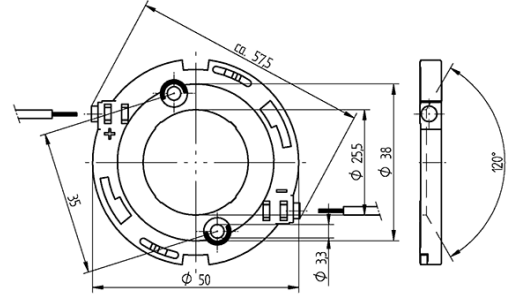
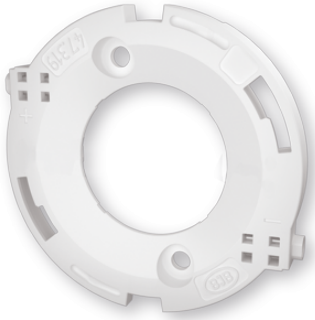


# COB connector Ø 50 mm for LED array 28 x 28 mm 47.319.2033.50



0,75 mm<sup>2</sup>



0,75 mm<sup>2</sup>

# COB connector Ø 50 mm for LED array 28 x 28 mm 47.319.2033.50



## DESCRIPTION

With integrated reflector interface  
Screw mounting: for screws M3 and locking washer  
Max. torque for screw fixing 0.5 Nm\*  
Strip length: 7-1 mm  
Polarity of LED must be observed  
Specifications of LED manufacturer must be observed  
cURus: For limited applications  
VDE-Reg. No. E289  
\*Please note the max torque of the COB manufacturer

Packaging quantity:	504.000
Product name:	COB connector Ø 50 mm for LED array 28 x 28 mm
Packaging type:	Bag
Country of origin:	DE
Mounting method 1:	Screw mount
Mounting method 2:	P2F fixing with 28.902.-102
Prefixation of COB:	Yes
Material:	Housing: PBT Contacts: CuSn
LED manufacturer:	Seoul Semiconductor, iLED, GLBTECH, LG Innotek, Sunpu, Prolight Opto, Luminus, Lextar, Itswell, Edison, Citizen, Bridgelux, Cree
LED Typ:	PB40H02, SAW x2296A, LEMWM28-40W, PB20H01, COB-Q series, SAW x229AAA, PB38V03, 37W L-COB G2, G7, CLM-22 / CXM-22, V22, PB38H01, PB38U02, SP22N-4090, Opto 40W, ZC25/40/60, GME2821, CLU04X, CLU04X / 73X, CHM-14, PB30U03, PB20U02, PB40U03, CMU 2236, PACG 110, SAW x2298A
Conductor cross-section:	0.75 mm <sup>2</sup>
Approval:	cURus
cULus file no.:	E-345385
Rating:	3A / 150 VDC
Weight:	5
Pkg.:	504

## Suitable for the following LED models:

LED Manufacturer	LED Type	More Information
Luminus	CLM-22 / CXM-22	<a href="http://www.luminus.com">http://www.luminus.com</a>
GLBTECH	GME2821	<a href="http://www.high-cri-led.com">http://www.high-cri-led.com</a>
iLED	SP22N-4090	<a href="http://www.iledm.com">http://www.iledm.com</a>
Sunpu	G7	<a href="http://www.sunpuled.com">http://www.sunpuled.com</a>
LG Innotek	LEMWM28-40W	<a href="http://ledlighting.lginnotek.com">http://ledlighting.lginnotek.com</a>
Seoul Semiconductor	ZC25/40/60	<a href="http://www.seoulsemicon.com">http://www.seoulsemicon.com</a>
Lextar	PB20H01	<a href="http://www.lextar.com">http://www.lextar.com</a>
Edison	Opto 40W	<a href="http://www.edison-opto.com.tw">http://www.edison-opto.com.tw</a>
Citizen	CLU04X / 73X	<a href="http://ce.citizen.co.jp">http://ce.citizen.co.jp</a>

## X-ON Electronics

Largest Supplier of Electrical and Electronic Components

*Click to view similar products for [LED Lighting Mounting Accessories](#) category:*

*Click to view products by [BJB](#) manufacturer:*

Other Similar products are found below :

[C16142\\_HEKLA-SOCKET-K](#) [3SU1401-1BG20-1AA0](#) [3SU1900-0BC31-0NB0](#) [ES16-RT](#) [1SFA616921R2042](#) [1SFA616921R2131](#)  
[1SFA616921R2133](#) [1SFA616921R2143](#) [1SFA611621R1093](#) [90100002](#) [B8910020](#) [D3980022](#) [E3990022](#) [E3990040](#) [V4840019](#) [V4850019](#)  
[CABI12 E BK 1M SET PRM](#) [FLAT8 H/U BK 1M SET PRM](#) [BEGTIN12 J/S BK 1M SET PRM](#) [1-2213678-6](#) [C16791\\_CLAMP-Z45-A](#)  
[F17250\\_SOLDER-CLIP-A](#) [CM22-4-20MA](#) [CM22-R10K-MT](#) [CM22-R1K](#) [CM22-R50K](#) [CM22-R5K-MT](#) [CM22-SLR](#) [10465](#) [M22-A](#) [M22-](#)  
[CK11](#) [M22-CK20](#) [M22G-XGPV](#) [M22-K01](#) [M22-LCH-W](#) [M22-LC-R](#) [M22-LED230-R](#) [M22-LED230-W](#) [M22-LEDC230-G](#) [M22-LEDC-G](#)  
[M22-LEDC-W](#) [M22-LED-G](#) [M22-LED-W](#) [M22-L-G](#) [M22-LH-G](#) [M22-LH-R](#) [M22-LH-W](#) [M22-L-R](#) [M22-L-W](#) [M22-L-X](#)