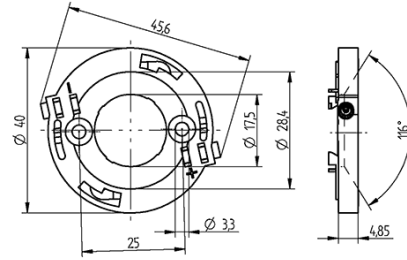
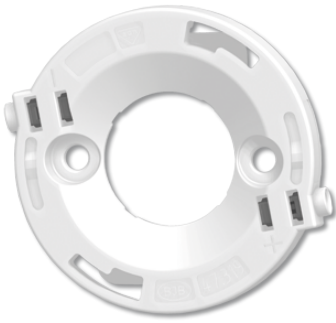


COB connector Ø 40 mm for LED array 19 x 19 mm 47.319.6024.50



0.25-0.5 mm²



0,5 mm²

COB connector Ø 40 mm for LED array 19 x 19 mm 47.319.6024.50



DESCRIPTION

With integrated reflector interface
Screw mounting: for screws M3 and locking washer
Max. torque for screw fixing 0.5 Nm*
Strip length: 7-1 mm
Polarity of LED must be observed
Specifications of LED manufacturer must be observed
cURus: For limited applications
VDE-Reg. No. E289
*Please note the max torque of the COB manufacturer

Product name:	COB connector Ø 40 mm for LED array 19 x 19 mm
Mounting method 1:	Screw mount
Mounting method 2:	P2F fixing with 28.902.-102
Prefixation of COB:	Yes
Material:	Housing: PBT Contacts: CuSn
LED manufacturer:	LEDtech, Xicato, Vossloh-Schwabe, Tridonic, Sunpu, Seoul Semiconductor, OSRAM Opto Semiconductors, Luminus, Liteon, Lextar, Prolight Opto, Edison, Itswell, Citizen, Bridgelux, Everlight
LED Typ:	LP30N3-84N-B131299, SLE G6/G7 LES 15, G17, ZC12/18, V13 - Gen. 7, PACB 032/PACF 57, M045, Opto 30W, PB26H01, Xuan1919, Soleriq S13 - 19x19 mm, SLE G6 LES 17, PB19H01, DMC 114/118/125/128, SAWS1564A / 1566A, COB-N series, CIM-14 / CLM-14 / CXM-14, Soleriq S15, CHM-9 / CHM-11, CVM-14, LES 14.5 (19 x 19 x 0.9 mm), PB16H01, CLU03X / 712 / 72X
Conductor cross-section:	0.5 mm ²
Approval:	cURus
cULus file no.:	E-345385
Rating:	3A / 150 VDC
Weight:	3
Pkg.:	420

Suitable for the following LED models:

LED Manufacturer	LED Type	More Information
Bridgelux	V13 - Gen. 7	http://www.bridgelux.com
Lextar	PB26H01	http://www.lextar.com
Lextar	PB16H01	http://www.lextar.com
Lextar	PB19H01	http://www.lextar.com
OSRAM Opto Semiconductors	Soleriq S13 - 19x19 mm	http://www.osram-os.com
Liteon	M045	http://optoelectronics.liteon.com
Itswell	COB-N series	http://www.itswell.com
Tridonic	SLE G6/G7 LES 15	http://www.tridonic.com
Luminus	CIM-14 / CLM-14 / CXM-14	http://www.luminus.com
Edison	Opto 30W	http://www.edison-opto.com.tw
Prolight Opto	PACB 032/PACF 57	http://www.prolightopto.com

X-ON Electronics

Largest Supplier of Electrical and Electronic Components

Click to view similar products for [LED Lighting Mounting Accessories](#) category:

Click to view products by [BJB](#) manufacturer:

Other Similar products are found below :

[C16142_HEKLA-SOCKET-K](#) [3SU1401-1BG20-1AA0](#) [3SU1900-0BC31-0NB0](#) [ES16-RT](#) [1SFA616921R2042](#) [1SFA616921R2131](#)
[1SFA616921R2133](#) [1SFA616921R2143](#) [1SFA611621R1093](#) [90100002](#) [B8910020](#) [D3980022](#) [E3990022](#) [E3990040](#) [V4840019](#) [V4850019](#)
[CABI12 E BK 1M SET PRM](#) [FLAT8 H/U BK 1M SET PRM](#) [BEGTIN12 J/S BK 1M SET PRM](#) [1-2213678-6](#) [C16791_CLAMP-Z45-A](#)
[F17250_SOLDER-CLIP-A](#) [CM22-4-20MA](#) [CM22-R10K-MT](#) [CM22-R1K](#) [CM22-R50K](#) [CM22-R5K-MT](#) [CM22-SLR](#) [10465](#) [M22-A](#) [M22-](#)
[CK11](#) [M22-CK20](#) [M22G-XGPV](#) [M22-K01](#) [M22-LCH-W](#) [M22-LC-R](#) [M22-LED230-R](#) [M22-LED230-W](#) [M22-LEDC230-G](#) [M22-LEDC-G](#)
[M22-LEDC-W](#) [M22-LED-G](#) [M22-LED-W](#) [M22-L-G](#) [M22-LH-G](#) [M22-LH-R](#) [M22-LH-W](#) [M22-L-R](#) [M22-L-W](#) [M22-L-X](#)