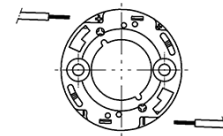
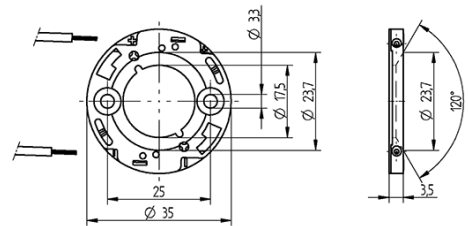
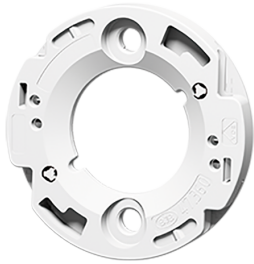


COB connector Ø 35 mm for LED array 19 x 19 mm 47.360.1010.50



8.0 + 1 mm



0,35-0,5 mm²



0.35-0.5 mm²

COB connector Ø 35 mm for LED array 19 x 19 mm 47.360.1010.50



DESCRIPTION

With integrated COB holder and interface for reflectors 47.935 And 35.835

Easy pre-assembly of LED Screw mounting: for screws M3 and locking washer

Max. torque for screw fixing 0.5 Nm*

Strip length: 8+1 mm

Polarity symbols of connector and LED must be observed in assembly

Specification of LED manufacturer must be observed

In a series connection of LED modules, the air gap and creepage distances has to be sized that each module covers the total voltage of the series connection

*Please note the max torque of the COB manufacturer

Packaging quantity:	945.000
Product name:	COB connector Ø 35 mm for LED array 19 x 19 mm
Packaging type:	Bag
Country of origin:	DE
Mounting method 1:	Screw mount
Mounting method 2:	P2F fixing with 28.902.-102
Mounting method 3:	Tip for fastening by screws: The screw chamber of the 47.360 series has a height of 1.9 mm. The screw head must not be higher, otherwise the reflector will fit poorly or not at all.
Prefixation of COB:	Yes
Material:	Housing: PBT Contacts: CuSn
LED manufacturer:	Luminus, Liteon, Edison, LG Innotek, Itswell, LEDtech, Lextar, Tridonic, Bridgelux, Everlight, Sunpu, OSRAM Opto Semiconductors, Vossloh-Schwabe, Prolight Opto, Cree, Samsung, Seoul Semiconductor, Xicato, Citizen
LED Typ:	LC020C, ZC12/18, M045, CIM-9 / CXM-9 / CLM-9, Soleriq S13 - 19x19 mm, CIM-14 / CLM-14 / CXM-14, LC016D / 19D / 26D / 33D, Opto 30W, G17, PB26H01, SLE G6/G7 LES 15, DMS 125/126/128, VS DMS099, DMC 115C40E, SAWS1564A / 1566A, COB-N series, V13 - Gen. 7, LP30N3-84N-B131299, LC030C / LC040C, CLU03X / 712 / 72X, 15W L-COB G2, SAW815xxA / SAW915xxA, SLE G6 LES 17, SLE G1 LES 11 / LES 15, LES 14.5 (19 x 19 x 0.9 mm), CHM-9 / CHM-11, CMU 1516, COB-B series, CMU 1519, CMU 1526, CMU 1532, CVM-14, DMC 114/118/125/128, Soleriq S15, PACB 032/PACF 57, Xuan1919
Conductor cross-section:	0.35-0.5 mm ²
Rating:	Rating: 3A / 150 VDC
Weight:	2.4
Pkg.:	945

Suitable for the following LED models:

LED Manufacturer	LED Type	More Information
Bridgelux	V13 - Gen. 7	http://www.bridgelux.com
Edison	Opto 30W	http://www.edison-opto.com.tw
Everlight	Xuan1919	http://www.everlight.com
Itswell	COB-B series	http://www.itswell.com
LEDtech	LP30N3-84N-B131299	http://www.ledtech.com.tw
Lextar	PB26H01	http://www.lextar.com
Liteon	M045	http://optoelectronics.liteon.com

X-ON Electronics

Largest Supplier of Electrical and Electronic Components

Click to view similar products for [LED Lighting Mounting Accessories](#) category:

Click to view products by [BJB](#) manufacturer:

Other Similar products are found below :

[C16142_HEKLA-SOCKET-K](#) [3SU1401-1BG20-1AA0](#) [3SU1900-0BC31-0NB0](#) [ES16-RT](#) [1SFA616921R2042](#) [1SFA616921R2131](#)
[1SFA616921R2133](#) [1SFA616921R2143](#) [1SFA611621R1093](#) [90100002](#) [B8910020](#) [D3980022](#) [E3990022](#) [E3990040](#) [V4840019](#) [V4850019](#)
[CABI12 E BK 1M SET PRM](#) [FLAT8 H/U BK 1M SET PRM](#) [BEGTIN12 J/S BK 1M SET PRM](#) [1-2213678-6](#) [C16791_CLAMP-Z45-A](#)
[F17250_SOLDER-CLIP-A](#) [CM22-4-20MA](#) [CM22-R10K-MT](#) [CM22-R1K](#) [CM22-R50K](#) [CM22-R5K-MT](#) [CM22-SLR](#) [10465](#) [M22-A](#) [M22-](#)
[CK11](#) [M22-CK20](#) [M22G-XGPV](#) [M22-K01](#) [M22-LCH-W](#) [M22-LC-R](#) [M22-LED230-R](#) [M22-LED230-W](#) [M22-LEDC230-G](#) [M22-LEDC-G](#)
[M22-LEDC-W](#) [M22-LED-G](#) [M22-LED-W](#) [M22-L-G](#) [M22-LH-G](#) [M22-LH-R](#) [M22-LH-W](#) [M22-L-R](#) [M22-L-W](#) [M22-L-X](#)