

Data Sheet

Triple Output Programmable DC Power Supply Model 9129B



The 9129B is an economical triple output linear programmable DC power supply featuring isolated outputs that can be adjusted independently or combined in series or parallel to output higher voltage or current. Additionally, this supply can operate in tracking mode with user-configurable ratios between channels.

The front panel keys and rotary knob with convenient cursors let users quickly set voltage and current values. Up to 27 different instrument settings can be saved and recalled. The power-on state of the outputs can also be configured.

The USB to TTL interface supporting SCPI commands can be used to remotely control the power supply via a PC. Alternatively, users can control the 9129B, execute test sequences or log measurements using the provided PC software application. This software also integrates with Data Dashboard for LabVIEW apps enabling iOS, Android, or Windows 8 compatible tablets or smartphones to remotely monitor select measurement indicators.

This power supply is suitable for a wide range of applications including education, service and electronic design.

Features

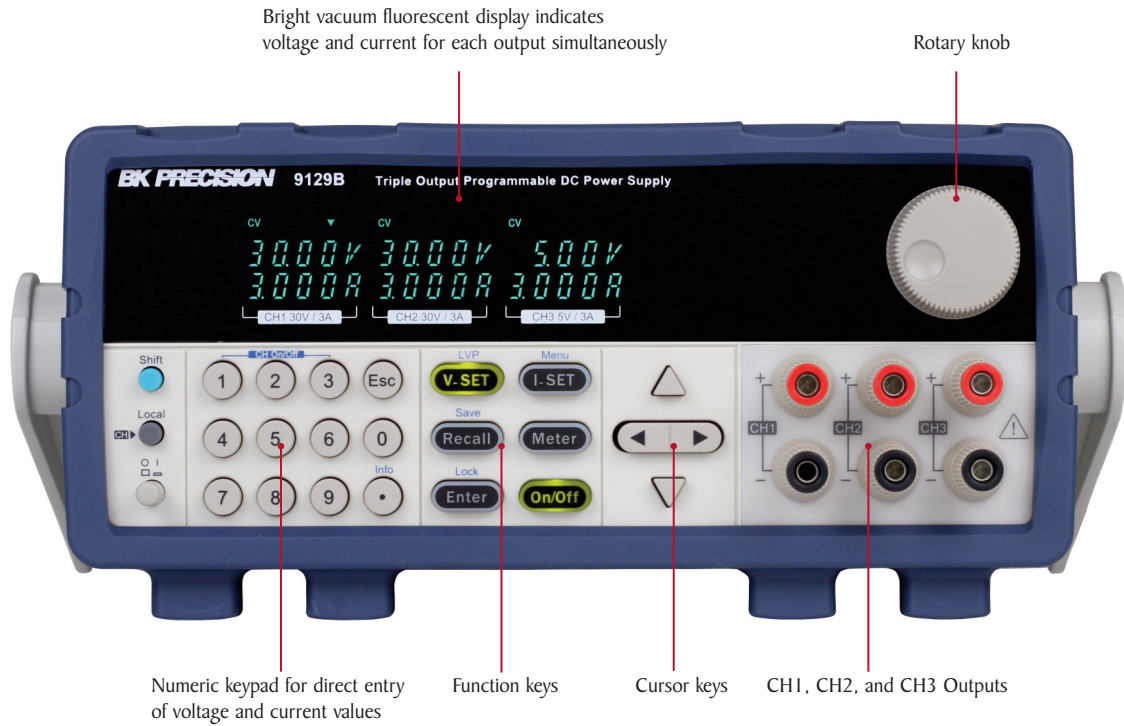
- Three independent and electrically isolated outputs
- Displays voltage and current settings for all three channels simultaneously
- Low noise, linear regulation
- Series and parallel modes combine channels to increase the output voltage or current
- Tracking mode allows users to set up channels to maintain a programmed ratio
- Fully programmable channels with output On/Off control
- Store and recall up to 27 instrument settings
- Communicate via USB interface supporting SCPI commands using the included USB to TTL serial adapter
- Softpanel for remote control, test sequence generation, and datalogging available
- Overvoltage (OVP) and overtemperature (OTP) protection including keylock function
- Compact 19" half-rack form factor allows for side-by-side rack mounting of two units

Output Rating

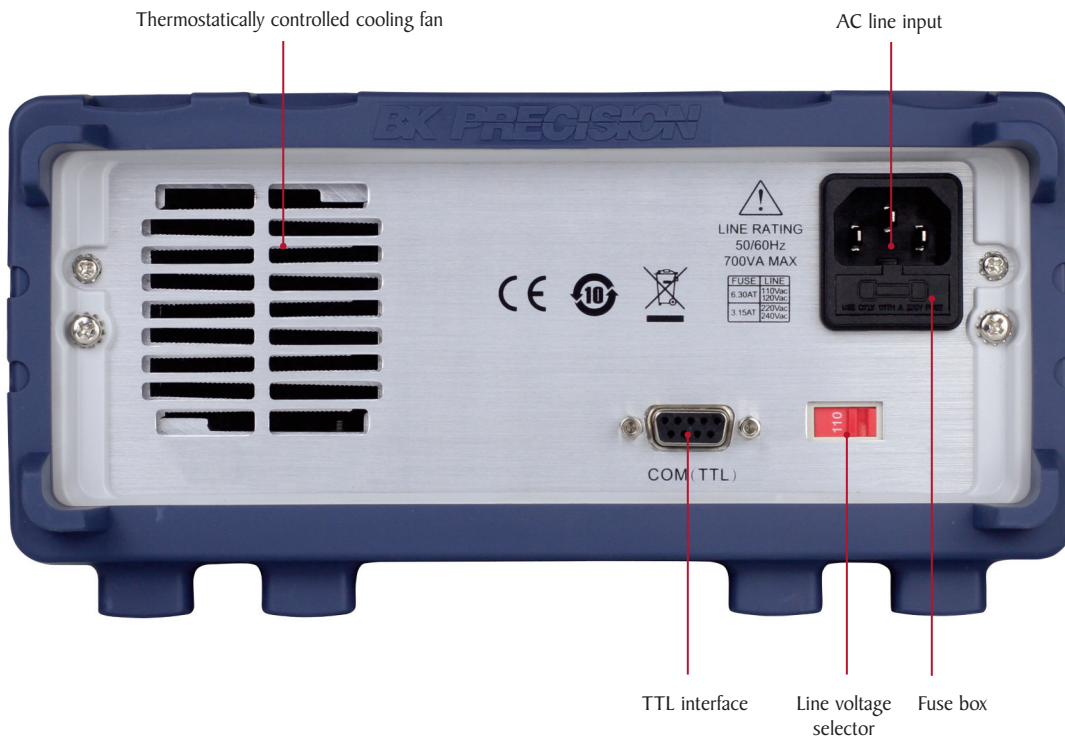
| | |
|---------|---------------------------------------|
| Voltage | 0 - 30 V (CH1 & CH2) 0 - 5 V (CH3) |
| Current | 0-3 A (CH1, CH2 & CH3) |

Triple Output Programmable DC Power Supply
Model 9129B

Front panel



Rear panel



Flexible operation

Combined series mode



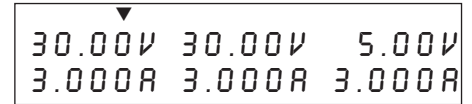
Channels 1 and 2 can be wired in series to increase the voltage. Selecting series combined mode provides convenient metering of the channels connected in series.

Combined parallel mode



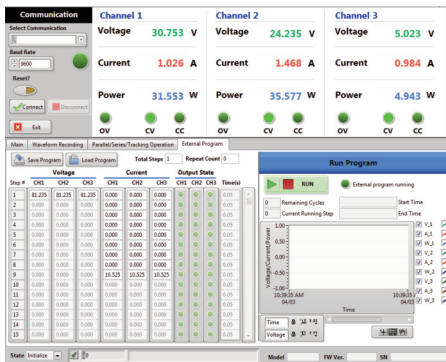
Channels 1 and 2 can be wired in parallel to increase the current. Selecting parallel combined mode provides convenient metering of the channels connected in parallel.

Tracking mode



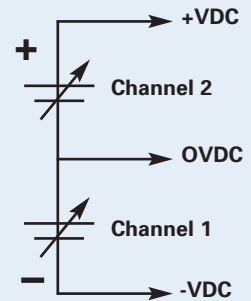
Tracking mode can be used to simplify adjustments across multiple channels by maintaining a user-defined ratio between outputs. Tracking mode can be set on channels 1 and 2.

Application software



Bipolar output configuration

The independent and isolated outputs can be used to create positive and negative outputs between channels 1 and 2.



This feature is useful for powering bipolar circuits and devices.

PC software is provided for front panel emulation, generating and executing test sequences or logging measurement data without the need to write source code.

- Remote monitoring on iOS, Android, or Windows 8 compatible tablets or smartphones via NI Data Dashboard for LabVIEW apps.
- Log voltage, current, and power values of each channel as well as timestamp, CV/CC mode, and output status.
- Quickly develop a custom dashboard with indicators, charts, or gauges to monitor your power supply.
- Create an unlimited number of external list files to be executed from PC memory. Save and recall list files to/from the PC.

Specifications

| Model | 9129B |
|---|---|
| Output Rating | |
| Voltage | 0–30 V (CH1 & CH2), 0–5 V (CH3) |
| Current | 0–3 A (all channels) |
| Power | 195 W |
| Load Regulation | |
| Voltage | ≤ 0.02 % + 4 mV |
| Current | ≤ 0.2 % + 3 mA |
| Line Regulation | |
| Voltage | ≤ 0.02 % + 4 mV |
| Current | ≤ 0.2 % + 3 mA |
| Ripple & Noise | |
| Voltage | ≤ 5 mVp-p / ≤ 1 mVrms |
| Current | ≤ 6 mArms |
| Programming Resolution | |
| Voltage | 10 mV |
| Current | 1 mA |
| Readback Resolution | |
| Voltage | 10 mV |
| Current | 1 mA |
| Programming Accuracy ± (% output + offset) | |
| Voltage | ≤ 0.06 % + 20 mV |
| Current | ≤ 0.2 % + 10 mA |
| Readback Accuracy ± (% output + offset) | |
| Voltage | ≤ 0.06 % + 20 mV |
| Current | ≤ 0.2 % + 10 mA |
| Series Accuracy (combined mode) | |
| Voltage | ≤ 0.5 % + 30 mV |
| Current | ≤ 0.2 % + 15 mA |
| Parallel Accuracy (combined mode) | |
| Voltage | ≤ 0.2 % + 30 mV |
| Current | ≤ 0.2 % + 25 mA |
| General | |
| Memory | 3 memory groups with 9 locations in each group |
| Remote Interface | USB (Virtual COM via included USB to TTL serial adapter) |
| AC Input | 110/220 VAC (+/- 10 %), 47 Hz - 63 Hz |
| Operating Temperature | 32 °F to 104 °F (0 °C to 40 °C), relative humidity up to 80% |
| Storage Temperature | -4 °F to 158 °F (-20 °C to 70 °C) |
| Dimensions (W x H x D) | 8.45" x 3.47" x 13.96" (214.5 x 88.2 x 354.6 mm) |
| Weight | 16.05 lbs. (7.3 kg) |
| Three-Year Warranty | |
| Standard Accessories | Power cord, IT-E132B (USB to TTL serial adapter plus USB cable), and certificate of calibration |
| Optional Accessories | IT-E151 rack mount kit |

Note: All specifications apply to the unit after a temperature stabilization time of 15 minutes over an ambient temperature range of 23 °C ± 5 °C.

About B&K Precision

For more than 70 years, B&K Precision has provided reliable and value-priced test and measurement instruments worldwide.

Our headquarters in Yorba Linda, California houses our administrative and executive functions as well as sales and marketing, design, service, and repair. Our European customers are most familiar with B&K through our French subsidiary, Sefram. Engineers in Asia know us through our B&K Precision Taiwan operation. The independent service center in Singapore services customers in Singapore, Malaysia, Vietnam, and Indonesia.



● B&K Precision group member ● Independent service center ● Service center location

Quality Management System

B&K Precision Corporation is an ISO9001 registered company employing traceable quality management practices for all processes including product development, service, and calibration.

ISO9001:2015

Certification body NSF-ISR
Certificate number 6Z241-ISR8



Video Library

View product overviews, demonstrations, and application videos in English, Spanish and Portuguese.

<http://www.youtube.com/user/BKPrecisionVideos>

Product Applications

Browse all of our supported product and mobile applications.

<http://bkprecision.com/product-applications>

X-ON Electronics

Largest Supplier of Electrical and Electronic Components

Click to view similar products for [Benchtop Power Supplies](#) category:

Click to view products by [B&K Precision](#) manufacturer:

Other Similar products are found below :

[NL200](#) [PR20](#) [ZUPNC403](#) [ZUP/W](#) [ZUPNC402](#) [TL89F2](#) [TL89K1](#) [TL89T1](#) [1332A-NIST](#) [CPX200DP](#) [AX-3003P](#) [AX-6003P](#) [AX-8450A](#)
[TPM-3003](#) [HMP2020](#) [HMP2030](#) [HMP4040](#) [1350](#) [UT804](#) [1410](#) [XLNRC](#) [1513](#) [1514](#) [1550](#) [1651A](#) [1665](#) [1666](#) [1667](#) [1693](#) [1694](#) [1698](#)
[MX100TP](#) [1739](#) [1788](#) [TPM-3005](#) [1902B](#) [9174B](#) [GDM-8245](#) [GDM-8255A](#) [GDM-8341](#) [PSP-603](#) [PSW 160-7.2](#) [QL355P SII](#) [HCS-3400-](#)
[USB](#) [MX180T](#) [MX180TP](#) [382276](#) [1403](#) [RK153](#) [ENP-120-48](#)