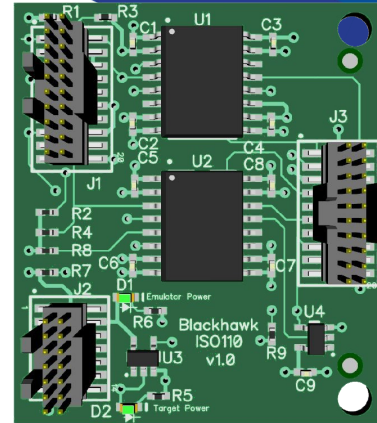


## What's Included

- Isolation Adapter Board
- 14-pin Ribbon Cable
- 20-pin Ribbon Cable
- Stand-offs & screws
- Quick Start Guide
- Warranty and Product Registration Information

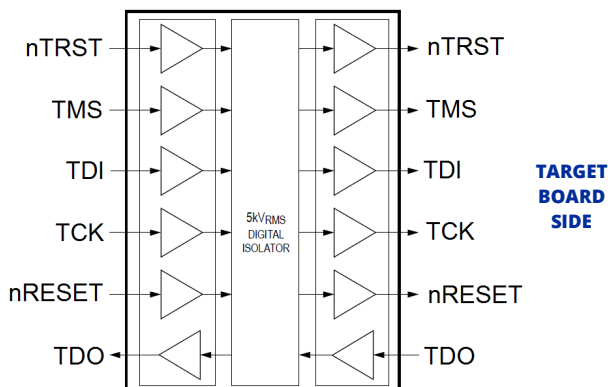


## Blackhawk XDS110 Isolation Adapter

# JTAG Isolation Protection for your Equipment

### Features

- Supports I/O voltages of 1.8/3.3/5.0 Volt targets
- Works with XDS110 debug probe
- Supports XDS110 2.5 MHz TCK
- Robust Galvanic Isolation of Digital Signals
  - Withstands 5k  $V_{RMS}$  for 60 seconds
  - Continuously Withstands 848  $V_{RMS}$
- Target Side Powered by target board's JTAG pin 5 (TVD)
  - power consumption is 50-70 mA nominal (80 mA max)
- Debug Probe Side Powered by XDS110 Aux Port (3.3 V)
- Standard 4-wire JTAG support (IEEE 1149.1)
- Two LED indicators for debug probe and target power
- RoHS Compliant



Isolated JTAG Signal Block Diagram

The **Blackhawk XDS110 Isolation Adapter** (ISO110) is a device that connects between the TI XDS110 Debug Probe and the JTAG connector of your target board. The ISO110 is designed to minimize and protect your connected devices (PC/Debug Probe/Target Board) from ground loop voltage, harsh environments and new, untested designs.

The ISO110 is a straightforward, easy-to-use product. Just connect it directly to the connectors of the XDS110 debug probe (with supplied ribbon cables) and to your target board's JTAG header. The ISO110 utilizes the 20-pin JTAG cable supplied with the XDS110 Debug Probe along with its pin converters for compatibility and connection to various target JTAG headers.

The ISO110 does not expect the target board to provide up to 80 mA of 1.8, 3.3 or 5.0 volts on JTAG pin 5 (TVD) to power the adapter's target side components.

The debug probe side is powered by 3.3 volts from the XDS110 Aux port, which is configured in Code Composer Studio.

Blackhawk JTAG Products are available from a worldwide network of industry resellers and distributors.

### Ordering Information

**Part Number: BH-ADP-ISO110**

**SKU: 12215**

For more information, or to order this product online, please visit our website at [www.blackhawk-dsp.com](http://www.blackhawk-dsp.com)

### Limitations

- EMU JTAG Signals used for boot modes and Input triggers are not supported
- Energy trace functionality of XDS110 is not supported
- Bi-directional JTAG signals are not supported (i.e. cJTAG, SWD)

Learn More: For more information about Blackhawk products, please visit [www.blackhawk-dsp.com](http://www.blackhawk-dsp.com)

## X-ON Electronics

Largest Supplier of Electrical and Electronic Components

*Click to view similar products for [Sockets & Adapters](#) category:*

*Click to view products by [Blackhawk](#) manufacturer:*

Other Similar products are found below :

[6508-0-00-01-00-00-33-0](#) [AC164348](#) [1262](#) [22827](#) [AC164353](#) [TDGL015](#) [SA247](#) [SM64TQ-ACTEL-1](#) [70-0036](#) [8.06.03](#) [DS91230+](#) [SMPA-ISP-ACTEL-3-KIT](#) [16017](#) [LFVDBGF](#) [KIT 70601-3](#) [SM132CQ-ACTEL](#) [R0E000010ACB20](#) [IPC0181](#) [IPC0175](#) [IPC0165](#) [AC164397](#) [conga-Thin MITX/eDP to DP Adapter](#) [SLG46621V-SKT](#) [SLG46722V-SKT](#) [ML-ADP-EVN](#) [TOOLSTICK990MPP](#) [110-83-320-41-605101](#) [110-83-632-41-605101](#) [110-83-640-41-605101](#) [110-83-628-41-605101](#) [116-83-306-41-001101](#) [PA0003](#) [PA0007](#) [PA0009](#) [PA0035](#) [PA0085](#) [PA0096](#) [IPC0079](#) [ATARD-DBGADPT](#) [80-000286](#) [ATSTK600-RC88](#) [ATSTK600-SC06](#) [ATSTK600-RC78](#) [SPC560PADPT64S](#) [AC164345](#) [AC164342](#) [AC164038](#) [14-351000-11-RC](#) [966927-1](#) [116-87-308-41-003101](#)