

ABS201~ABS210

Rev.F Jun.-2018

描述 / Descriptions

2.0A 表面贴装玻璃钝化整流桥，薄型 ABS/LBF 封装。

2.0A Surface Mount Glass Passivated Bridge Rectifier, ABS/LBF thin package.

特征 / Features

玻璃钝化芯片，反向电压：100V~1000V，正向电流：2.0A，浪涌电流大，适用于表面贴装。无卤产品。

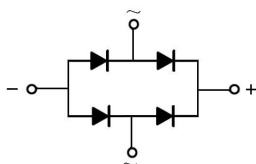
Glass Passivated Chip Junction, Reverse Voltage: 100 to 1000V, Forward Current: 2.0A, High Surge Current Capability, Designed for Surface Mount Application. Halogen free product.

用途 / Applications

一般用途。

General purpose.

内部等效电路 / Equivalent Circuit

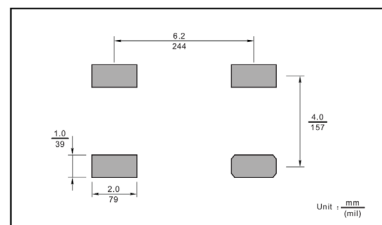


引脚排列 / Pinning



PIN	DESCRIPTION
1	Input Pin (~)
2	Input Pin (~)
3	Output Anode (+)
4	Output Cathode (-)

The recommended mounting pad size



印章代码 / Marking

见印章说明。See Marking Instructions.

极限参数 / Absolute Maximum Ratings(Ta=25°C)

参数 Parameter	符号 Symbol	数值 Rating						单位 Unit
		ABS201	ABS202	ABS204	ABS206	ABS208	ABS210	
Maximum Recurrent Peak Reverse Voltage	V_{RRM}	100	200	400	600	800	1000	V
Maximum RMS Voltage	V_{RMS}	70	140	280	420	560	700	V
Maximum DC Blocking Voltage	V_{DC}	100	200	400	600	800	1000	V
Average Rectified Output Current at $T_L = 100^\circ\text{C}$	I_o	2.0						A
Peak Forward Surge Current 8.3ms Single Half Sine Wave Superimposed on Rated Load(JEDEC Method)	I_{FSM}	60						A
Current Squared Time@ $1\text{ms} \leq t < 8.3\text{ms}$, $T_a = 25^\circ\text{C}$, Rating of per diode	I^2T	12						A ² Sec
Typical Junction Capacitance (Note1)	C_j	25						pF
Typical Thermal Resistance (Note2)	$R_{\theta JA}$	65						°C/W
	$R_{\theta JC}$	20						
Operating and Storage Temperature Range	T_j, T_{stg}	-55~150						°C

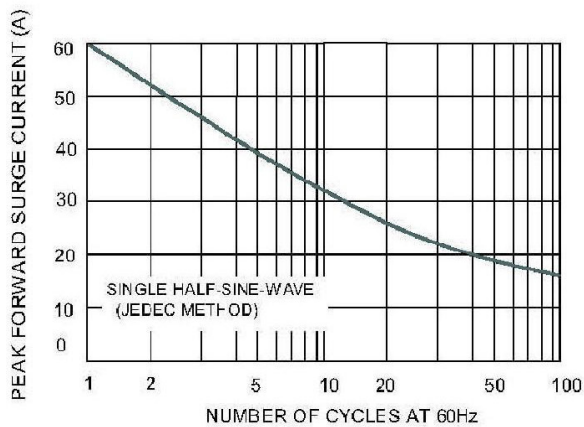
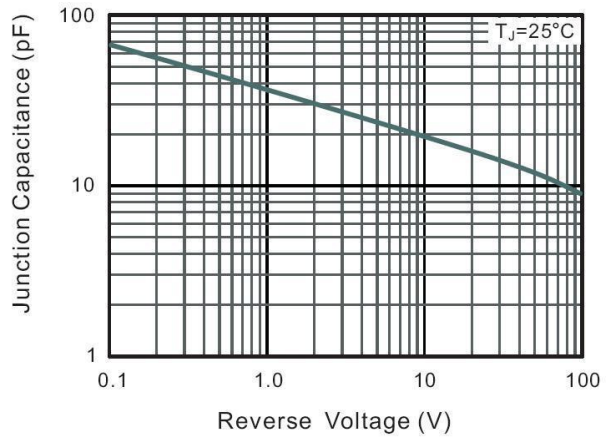
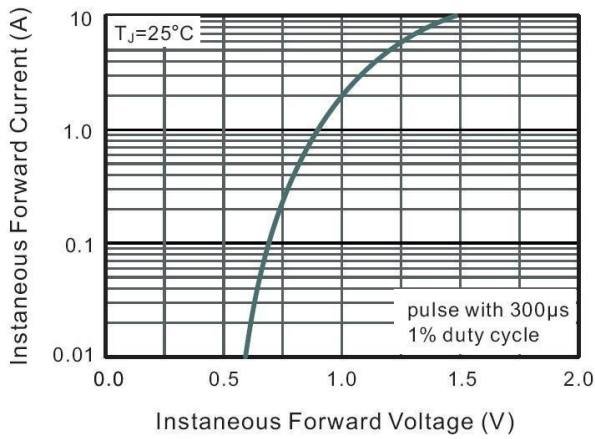
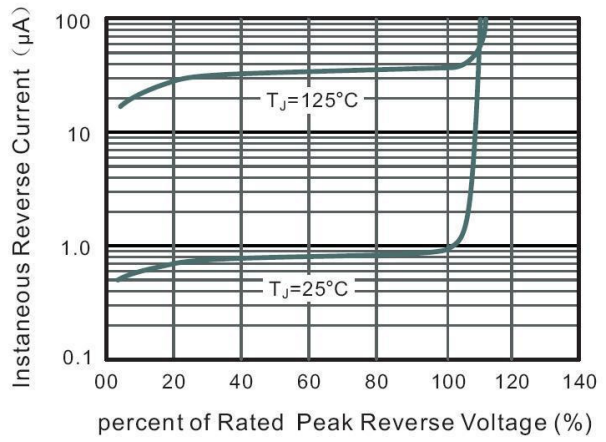
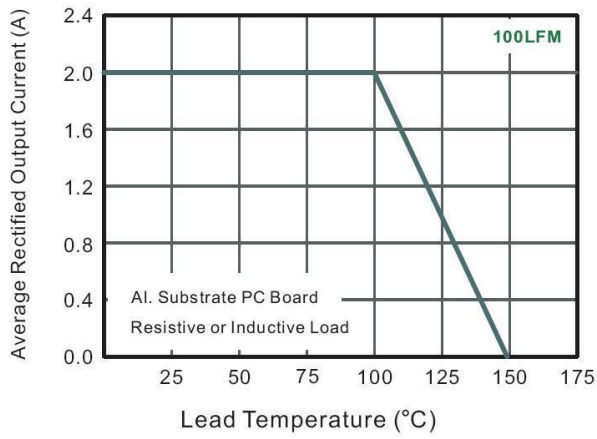
Note:

- 1.Measured at 1MHz and applied reverse voltage of 4 V D.C.
- 2.Mounted on glass epoxy PC board with $4 \times (5 \times 5\text{mm}^2)$ copper pad.

电性能参数 / Electrical Characteristics(Ta=25°C)

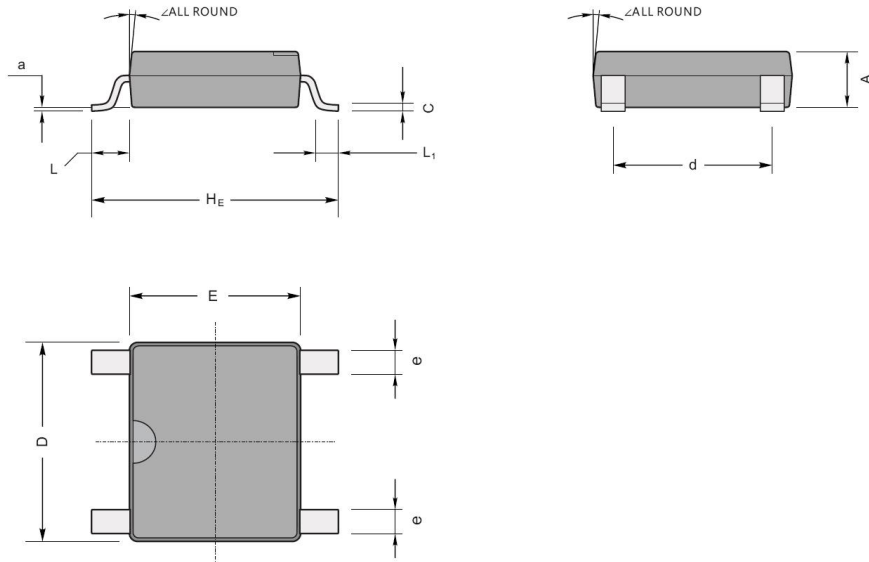
参数 Parameter	符号 Symbol	测试条件 Test Conditions	数值 Rating						单位 Unit
			ABS201	ABS202	ABS204	ABS206	ABS208	ABS210	
Forward Voltage per element	V_F	$I_F = 2.0\text{A}$	1.0						V
Maximum DC Reverse Current at Maximum DC Blocking Voltage	I_R	$T_a = 25^\circ\text{C}$	5.0						μA
		$T_a = 125^\circ\text{C}$	100						μA

电参数曲线图 / Electrical Characteristic Curve



外形尺寸图 / Package Dimensions

ABS/LBF



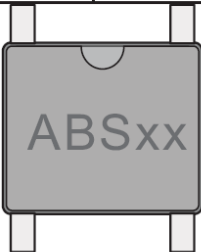
ABS/LBF mechanical data

UNIT		A	C	D	E	H_E	d	e	L	L_1	a	\angle
mm	max	1.5	0.22	5.2	4.5	6.4	4.2	0.7	0.95	0.6	0.2	7°
	min	1.3	0.15	4.9	4.2	6.0	3.8	0.5				
mil	max	59	8.7	205	177	252	165	28	37	24	4	
	min	51	5.9	193	166	236	150	20				

印章说明 / Marking Instructions

Marking

Type number	Marking code
ABS201	ABS201
ABS202	ABS202
ABS204	ABS204
ABS206	ABS206
ABS208	ABS208
ABS210	ABS210



The diagram shows a rectangular component with four pins. The marking 'ABSxx' is printed on the top surface of the component.

印章说明 / Marking Instructions



说明

ABS210 : 为型号代码

**** : 为生产批号追溯码，第 1 个*为年月代码，后面 3 个*为当月小批号代码

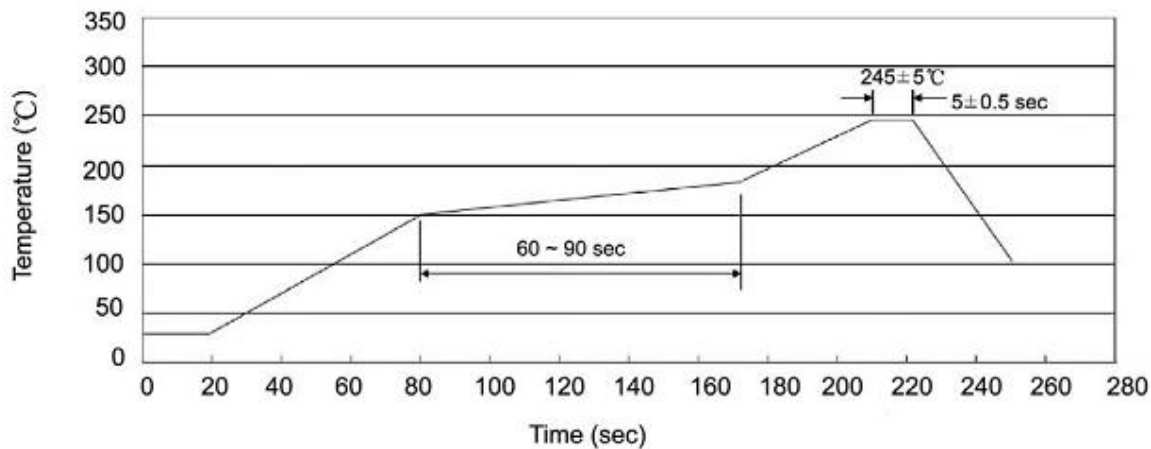
Note:

ABS210 : Product Type Code

**** : Lot No. Code , The 1st * means:YM Code , The last 3 * means:little Lot

No Code

回流焊温度曲线图(无铅) / Temperature Profile for IR Reflow Soldering(Pb-Free)



说明：

- 1、预热温度 150 ~ 180°C，时间 60 ~ 90sec;
- 2、峰值温度 245±5°C，时间持续为 5±0.5sec;
- 3、焊接制程冷却速度为 2 ~ 10°C/sec.

Note:

- 1.Preheating:150~180°C, Time:60~90sec.
- 2.Peak Temp.:245±5°C, Duration:5±0.5sec.
3. Cooling Speed: 2~10°C/sec.

耐焊接热试验条件 / Resistance to Soldering Heat Test Conditions

温度：260±5°C

时间：10±1 sec.

Temp.:260±5°C

Time:10±1 sec

包装规格 / Packaging SPEC.

卷盘包装 / REEL

Package Type 封装形式	Units 包装数量					Dimension 包装尺寸 (unit: mm ³)		
	Units/Reel 只/卷盘	Reels/Inner Box 卷盘/盒	Units/Inner Box 只/盒	Inner Boxes/Outer Box 盒/箱	Units/Outer Box 只/箱	Reel	Inner Box 盒	Outer Box 箱
ABS/LBF	5000	2	10000	5	50000	13" ×15	336X336X40	380X335X366

使用说明 / Notices

X-ON Electronics

Largest Supplier of Electrical and Electronic Components

Click to view similar products for [Bridge Rectifiers](#) category:

Click to view products by [Blue Rocket](#) manufacturer:

Other Similar products are found below :

[MB2510](#) [MB252](#) [MB356G](#) [MB358G](#) [MP358-BP](#) [90MT160KPBF](#) [GBJ1504-BP](#) [GBU10B-BP](#) [GBU15J-BP](#) [GBU15K-BP](#) [GBU4A-BP](#)
[GBU4D-BP](#) [GBU6B-E3/45](#) [GSIB680-E3/45](#) [DB101-BP](#) [DF01](#) [DF10SA-E345](#) [BU1508-E3/45](#) [BU1510-E3/45](#) [KBPC50-10S](#) [RS405GL-BP](#)
[G5SBA60-E3/51](#) [GBJ1502-BP](#) [GBU10J-BP](#) [GBU6M](#) [GBU8D-BP](#) [GBU8J-BP](#) [GSIB1520-E3/45](#) [TB102M](#) [MB1510](#) [MB6M-G](#) [MB86](#)
[TL401G](#) [MDA920A2](#) [TU602](#) [TU810](#) [MP501W-BP](#) [MP502-BP](#) [BR1005-BP](#) [BR101-BP](#) [BR84DTP204](#) [BU1010A-E3/51](#) [BU1508-E3/51](#)
[BU2008-E3/51](#) [US15KB80R-7000](#) [KBPC25-02](#) [VS-2KBB60](#) [VS-60MT120KPBF](#) [DB105-BP](#) [DF1510S](#)