

1	2	3	4	5	6	7	8	9
REV.	REMARK	DATE	SIGN.					

MATERIAL:

CONTACT PIN: PHOSPHOR BRONZE SELECTIVE 10 μ " GOLD OVER NICKEL PLATED.

GROUND PIN: COPPER WIRE, TIN PLATED

METAL BODY: ZINC DIE CASTING, NICKEL PLATED

MAIN BODY: VALOX, UL94V-0

CENTER PLASTIC: POLYPROLYLENE, UL94V-0

SPRING CLIP: PHOSPHOR BRONZE, TIN PLATED

ELECTRICAL:

OPERATING VOLTAGE: 500 VOLTS RMS

CONTACT RESISTANCE: 3.0 MILLIOHMS MAX. (GOLD)

FREQUENCY RANGE: 0~1 GHZ

DIELECTRIC WITHSTANDING VOLTAGE: 1500 VOLTS (VAC)

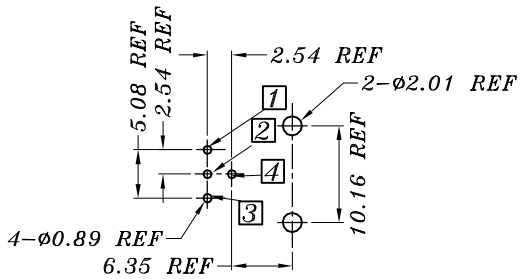
INSULATION RESISTANCE: 5000 MEGAOHMS MIN.

IMPEDANCE NOM.: 50 OHM

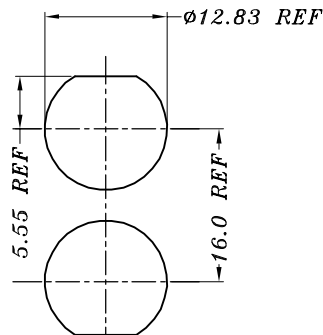
TEMPERATURE RANGE: -55°C TO +105°C

MECHANICAL:

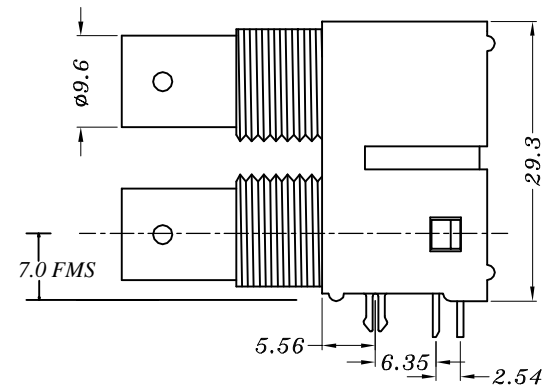
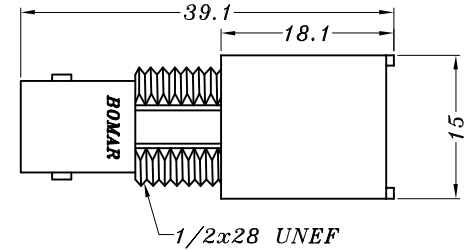
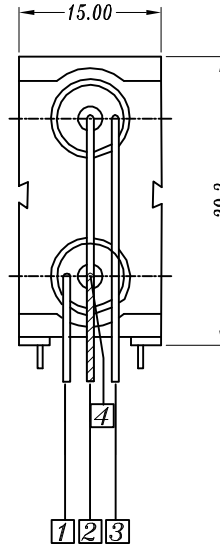
DURABILITY: 500 CYCLES



(DIMENSIONING)
PCB HOLE CONFIGURATION



PANEL CUTOUT



Bomar Interconnect	DESC.	DUAL BNC RIGHT ANGLE 50 OHM			APPROVED	CHECKED	DESIGNED	TOLERANCE	SCALE	1 = 1	UNIT	mm	
	P/N	364A2595	CUSTOMER P/N		BB	SO	BB		DATE	09/03/03	DWG NO.	UDBN\R01A13B	

1	2	3	4	5	6	7	8	9
---	---	---	---	---	---	---	---	---

X-ON Electronics

Largest Supplier of Electrical and Electronic Components

Click to view similar products for [RF Connectors / Coaxial Connectors](#) category:

Click to view products by [Bomar Interconnect](#) manufacturer:

Other Similar products are found below :

[8915-1511-000](#) [89674-0827](#) [6001-7071-019](#) [6002-7051-003](#) [6002-7551-202](#) [6059674-1](#) [619550-1](#) [630059-000](#) [M39030/3-01N](#) [6500-7071-046](#) [6769](#) [CX050L2AQ](#) [7002-1541-010](#) [7002-1542-011](#) [7004-1512-000](#) [7009-1511-004](#) [7010-1511-000](#) [7029-1511-060](#) [7101-1541-010](#) [7101-1571-002](#) [7145-1521-002](#) [7203-1571-003](#) [7209-1511-011](#) [7210-1511-015](#) [7210-1511-019](#) [73137-5015](#) [73216-2241](#) [73404-2300](#) [7405-1521-005](#) [7405-1521-802](#) [8527](#) [8547](#) [FS11V](#) [877931](#) [8808-1511-001](#) [9049-9513-000](#) [9074-9513-000](#) [9101-9573-002](#) [910A205F](#) [9130-9573-002](#) [PL11SC-026](#) [PL375-33](#) [PL40-5](#) [PL74C-221](#) [PL75MC-217](#) [PL803-7](#) [980-8666-005](#) [1200690078](#) [1-201144-1](#) [R107003010W](#)