

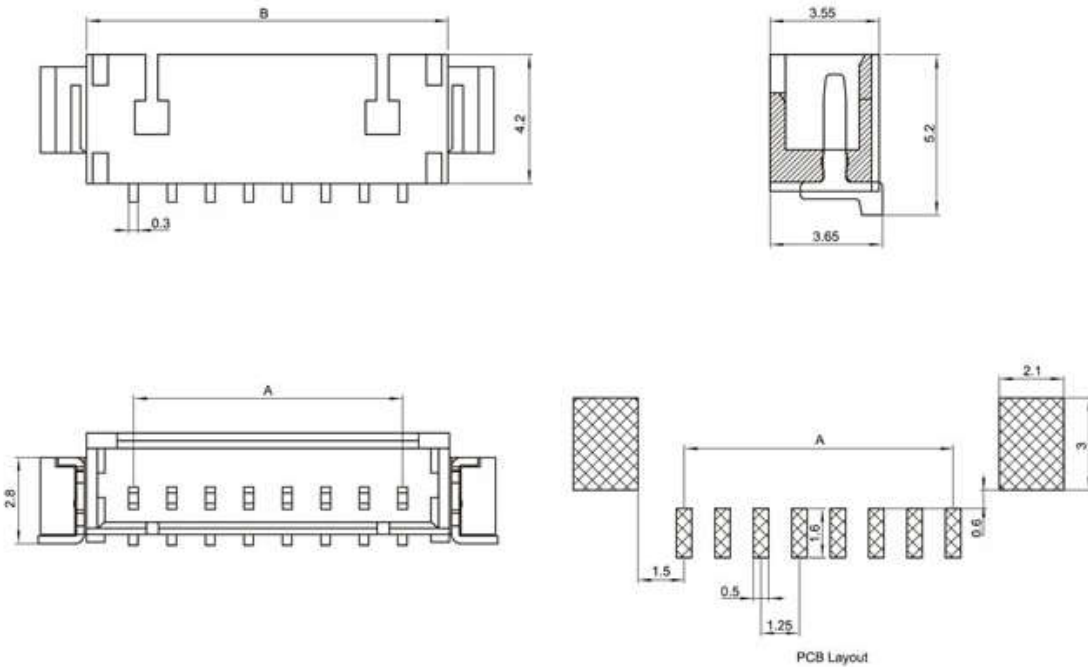
SPECIFICATIONS

Unit:mm

- ◇ Poles: 2~16
- ◇ Applicable wire: AWG#28-#22
- ◇ Voltage rating: 125V DC/AC
- ◇ Current rating: 1.0A
- ◇ Withstand voltage: 500V AC
- ◇ Working Temperature: -25°C ~ +85°C
- ◇ Insulation resistance: $\geq 1000M\Omega$
- ◇ Contact resistance: $\leq 0.03\Omega$
- ◇ Applicable PC board thickness: 0.6~1.2mm

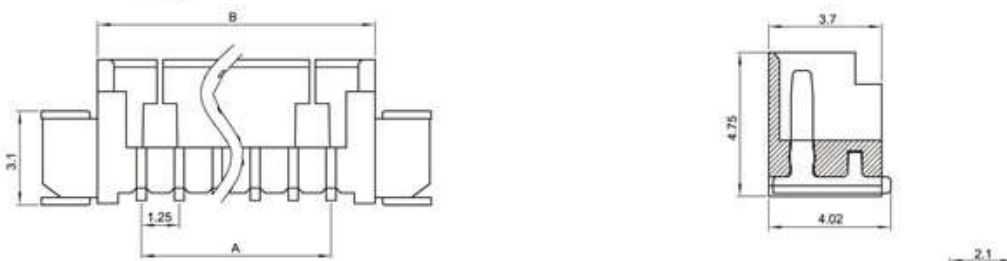
UL:Recognized No.E309635
 RoHS-specification and
 Halogen-free products

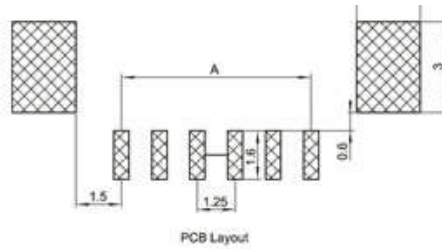
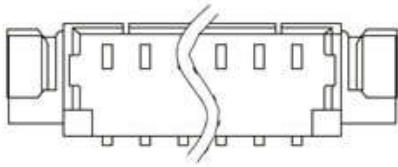
1.25T-2-nA 卧贴



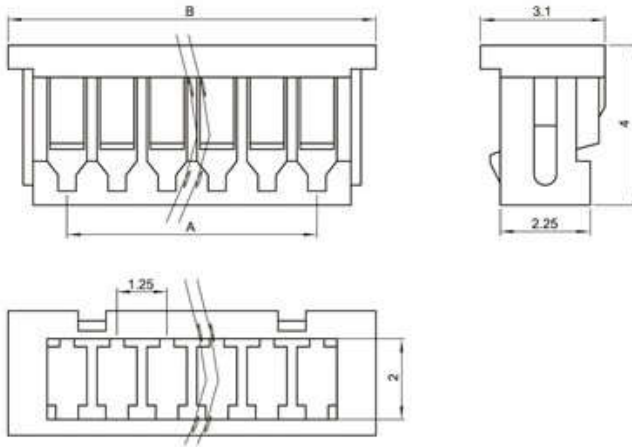
1.25T-2-nA 立贴

Unit:mm

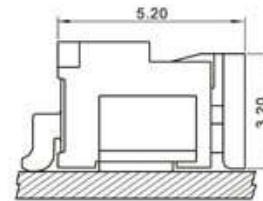
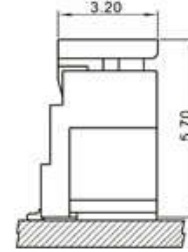




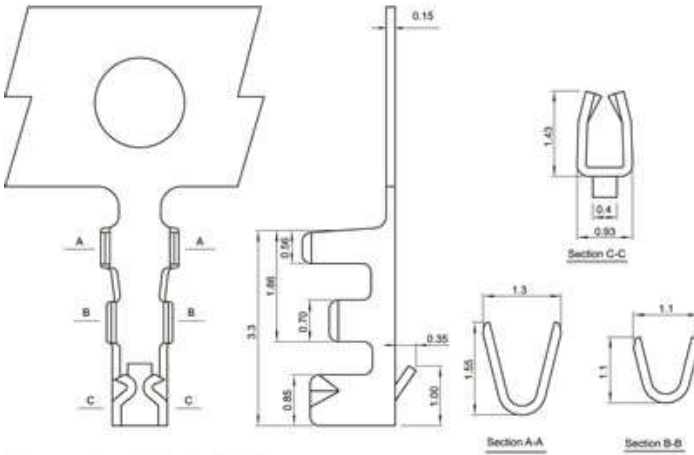
1.25T-2-nY



Mounting Measurement



1.25T-1-PT



Terminal(1.25T-1)

| Type | Applicable wires | | O.D of wire ins mm | Material | Finish |
|---------|------------------|-------|-----------------------|-------------|------------|
| | mm ² | AWG# | | | |
| 1.25T-1 | 0.8~0.3 | 32~28 | 0.8mm(max) | Phos.bronze | Tin-plated |

| Poles | Type | Size(mm) | | Poles | Type | Size(mm) | |
|-------|-------------|----------|-------|-------|-------------|----------|-------|
| | | A | B | | | A | B |
| 2 | 1.25T-2-2A | 1.25 | 4.25 | 2 | 1.25T-2-2Y | 1.25 | 4.2 |
| 3 | 1.25T-2-3A | 2.50 | 5.50 | 3 | 1.25T-2-3Y | 2.50 | 5.45 |
| 4 | 1.25T-2-4A | 3.75 | 6.75 | 4 | 1.25T-2-4Y | 3.75 | 6.7 |
| 5 | 1.25T-2-5A | 5.00 | 8.00 | 5 | 1.25T-2-5Y | 5.00 | 7.95 |
| 6 | 1.25T-2-6A | 6.25 | 9.25 | 6 | 1.25T-2-6Y | 6.25 | 9.2 |
| 7 | 1.25T-2-7A | 7.50 | 10.50 | 7 | 1.25T-2-7Y | 7.50 | 10.45 |
| 8 | 1.25T-2-8A | 8.75 | 11.75 | 8 | 1.25T-2-8Y | 8.75 | 11.7 |
| 9 | 1.25T-2-9A | 10.00 | 13.00 | 9 | 1.25T-2-9Y | 10.00 | 12.95 |
| 10 | 1.25T-2-10A | 11.25 | 14.25 | 10 | 1.25T-1-10Y | 11.25 | 14.2 |
| 11 | 1.25T-2-11A | 12.50 | 15.50 | 11 | 1.25T-1-11Y | 12.50 | 15.45 |
| 12 | 1.25T-2-12A | 13.75 | 16.75 | 12 | 1.25T-1-12Y | 13.75 | 16.7 |
| 13 | 1.25T-2-13A | 15.00 | 18.00 | 13 | 1.25T-1-13Y | 15.00 | 17.95 |
| 14 | 1.25T-2-14A | 16.25 | 19.25 | 14 | 1.25T-1-14Y | 16.25 | 19.2 |
| 15 | 1.25T-2-15A | 17.50 | 20.50 | 15 | 1.25T-1-15Y | 17.50 | 20.45 |
| 16 | 1.25T-2-16A | 18.75 | 21.75 | 16 | 1.25T-1-16Y | 18.75 | 21.7 |

X-ON Electronics

Largest Supplier of Electrical and Electronic Components

Click to view similar products for [Headers & Wire Housings](#) category:

Click to view products by [Boom](#) manufacturer:

Other Similar products are found below :

[95000-104TRLF](#) [10135584-644402LF](#) [DF62W-EP2022PCA](#) [95000-106TRLF](#) [DF62W-2022SCA](#) [DF62W-EP2022PC](#) [2203348](#) [DF62W-2022SC](#) [1084018](#) [1029039](#) [1084017](#) [802-10-012-10-002000](#) [1112640](#) [1112639](#) [891-007-9SS-BST1T](#) [000-34000](#) [0008550134](#) [0009482033](#) [0009507031](#) [57102-F02-18ULF](#) [57102-S06-03LF](#) [57202-S52-04LF](#) [PCN6-15S-2.5E](#) [0039019024](#) [58102-G61-06LF](#) [582553-1](#) [0009485154](#) [0009508121](#) [0022285053](#) [0050291907](#) [018731A](#) [LY20-4P-DT1-P1E-BR](#) [02.125.8002.8](#) [60101931](#) [60598-1 \(Cut Strip\)](#) [M1625-3R/100](#) [61062-3](#) [61082-181009](#) [CSU011177004](#) [636-1427](#) [638009-1](#) [641938-9](#) [641991-4](#) [644168-1](#) [644827-2](#) [647662-1](#) [65039-019ELF](#) [65692-001LF](#) [65781-018](#) [65781-047](#)