

# 3.96 条形连接器 (3.96mm)

## 技术参数 TECHNICAL PARAMETER

间距(PITCH):3.96mm

极数(Poles):2--16

适用基板厚度(Applicable PC board thickness):1.6mm

额定电流(Current rating):5A,AC,DC

额定电压(Voltage rating):250V,AC,DC

工作温度(Working Temperature):-25℃~+85℃

耐压值(Withstand voltage ):1500V,AC/min

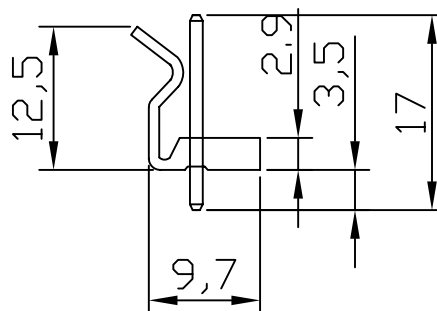
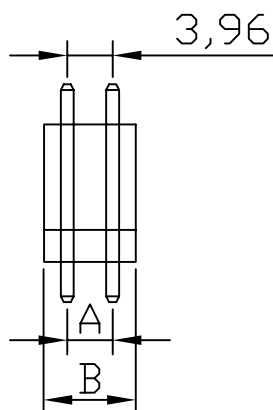
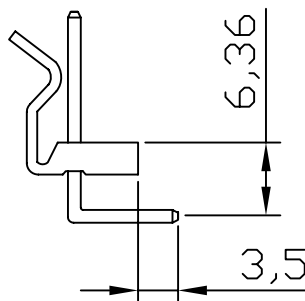
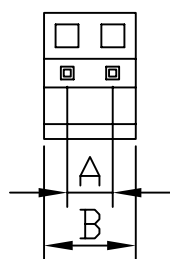
接触电阻(Contact resistance): $\leq 0.01 \Omega$

绝缘电阻(Insulation resistance): $\geq 1000M \Omega$

| 极数<br>Poles | 编号<br>Part Number | 尺寸 Dimension(mm) |    |
|-------------|-------------------|------------------|----|
|             |                   | A                | B  |
| 2           | 3.96-2A(W/T)      | 3.96             | 8  |
| 3           | 3.96-3A(W/T)      | 7.92             | 12 |
| 4           | 3.96-4A(W/T)      | 11.88            | 16 |
| 5           | 3.96-5A(W/T)      | 15.84            | 20 |
| 6           | 3.96-6A(W/T)      | 19.80            | 24 |
| 7           | 3.96-7A(W/T)      | 23.76            | 28 |
| 8           | 3.96-8A(W/T)      | 27.72            | 32 |
| 9           | 3.96-9A(W/T)      | 31.68            | 36 |
| 10          | 3.96-10A(W/T)     | 35.64            | 40 |
| 11          | 3.96-11A(W/T)     | 39.60            | 44 |
| 12          | 3.96-12A(W/T)     | 43.56            | 48 |
| 13          | 3.96-13A(W/T)     | 47.52            | 52 |
| 14          | 3.96-14A(W/T)     | 51.48            | 56 |
| 15          | 3.96-15A(W/T)     | 55.44            | 60 |
| 16          | 3.96-16A(W/T)     | 59.40            | 64 |

## 材料 MATERIAL

基座(HOUSING):尼龙66UL94V-0(NYLON66 UL94V-0)  
 插针(PIN):黄铜(BRASS)表面镀纯锡(PURE TIN-PLATED)



## X-ON Electronics

Largest Supplier of Electrical and Electronic Components

*Click to view similar products for [Headers & Wire Housings](#) category:*

*Click to view products by [Boom](#) manufacturer:*

Other Similar products are found below :

[57102-F02-18ULF](#) [58102-G61-06LF](#) [0009485154](#) [009176003701906](#) [0050291907](#) [02.125.8002.8](#) [609-3404](#) [61062-3](#) [622-0430](#) [622-3653LF](#)  
[63453-116](#) [636-1030](#) [636-1427](#) [636-3427](#) [636-4007](#) [641938-9](#) [644827-2](#) [65495-038](#) [65692-001LF](#) [65781-018](#) [65781-047](#) [65817-010LF](#)  
[65817-015LF](#) [66207-023LF](#) [67016-026LF](#) [67095-007LF](#) [68631-112](#) [68645-018](#) [68648-049](#) [699319-000](#) [70.362.1628.0](#) [70-4210](#) [70-4226B](#)  
[70-4853B](#) [707-5020](#) [707-5028](#) [71.350.2428.0](#) [71961-016LF](#) [733-134](#) [754199-000](#) [760-3052](#) [787-8014-00](#) [FCN-367T-T012/H](#) [80.063.4001.1](#)  
[800-90-001-10-001000](#) [800-90-010-10-002000](#) [801-43-002-10-013000](#) [801-43-006-10-002000](#) [803-41-018-10-001000](#) [803-43-014-20-](#)  
[001000](#)