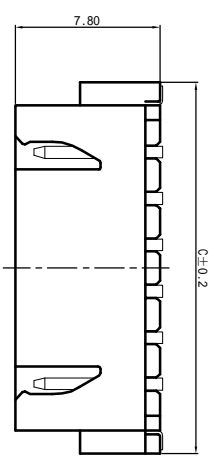
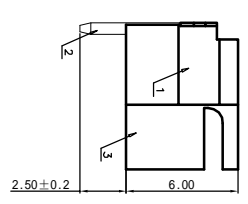
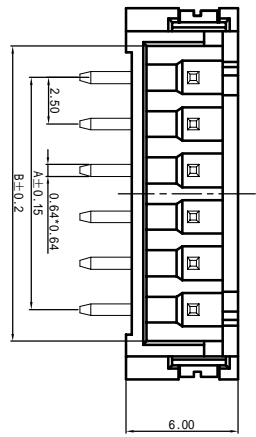


5		6	
版次	日期	内 容	
A1	10.06.10		

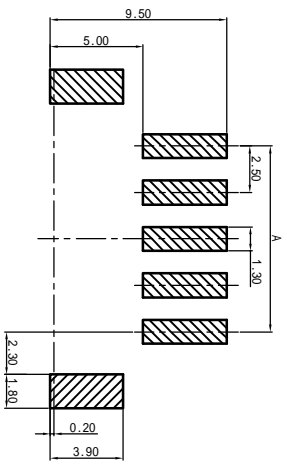
- Electrical properties:
- 1 Current rating:3 AC/DC (AWG #22)
  - 2 Voltage rating: 250V AC/DC
  - 3 Temperature range: -25°C to +85°C
  - 4 Contact resistance:Initial value/20mΩ max
  - 5 Insulation resistance:1000MΩ min
  - 6 Withstanding voltage:1000V AC / minute
  - 7 Applicable wire:AWG #26 to #22
- Environmental controls:
- 1 Banned contains SS - 00259 are restricted substances.
  - 2 The corresponding issued by SGS or ITS ICP-aes data.
- Not the material in a list, and validity.



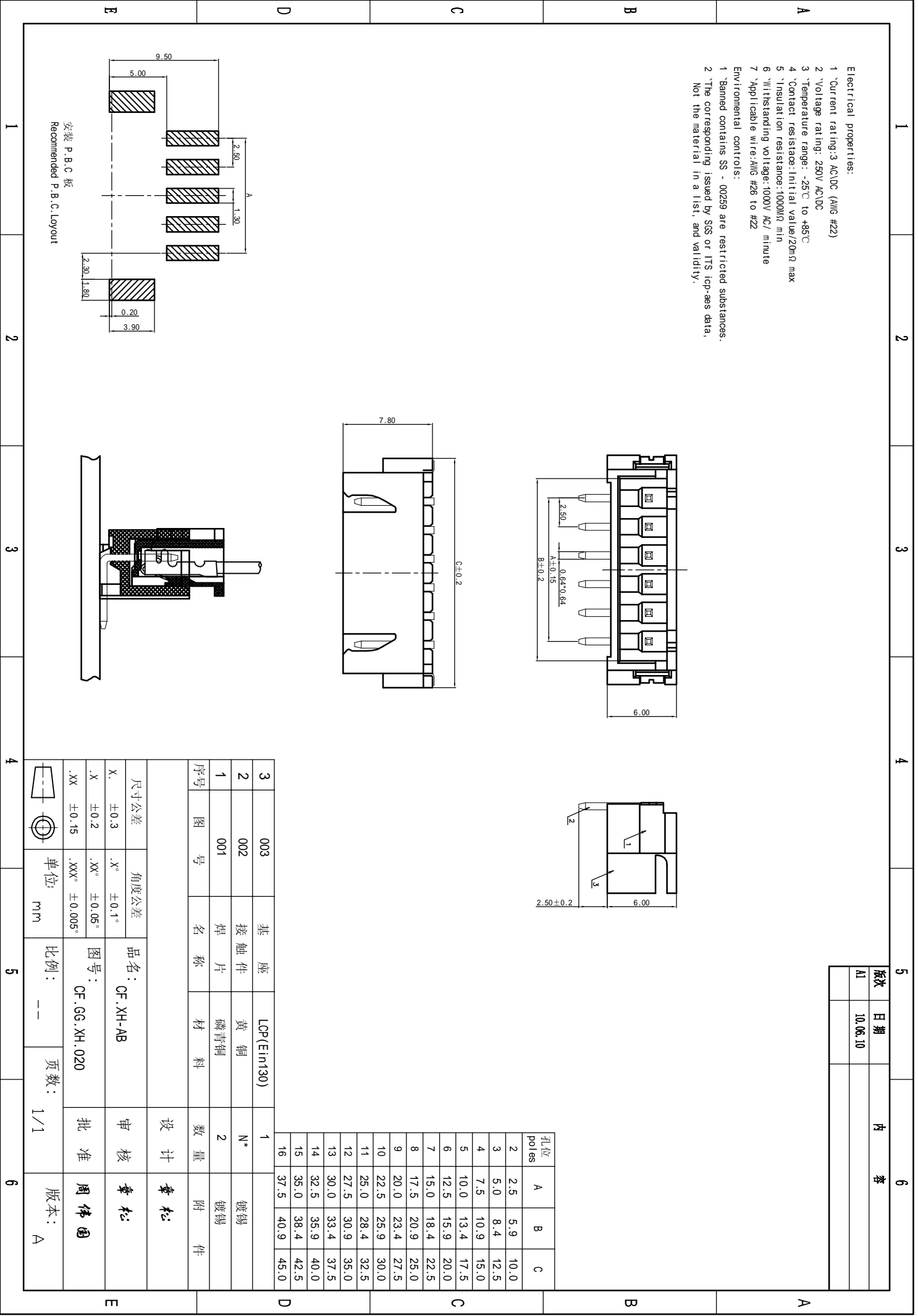
孔位 poles	A	B	C
2	2.5	5.9	10.0
3	5.0	8.4	12.5
4	7.5	10.9	15.0
5	10.0	13.4	17.5
6	12.5	15.9	20.0
7	15.0	18.4	22.5
8	17.5	20.9	25.0
9	20.0	23.4	27.5
10	22.5	25.9	30.0
11	25.0	28.4	32.5
12	27.5	30.9	35.0
13	30.0	33.4	37.5
14	32.5	35.9	40.0
15	35.0	38.4	42.5
16	37.5	40.9	45.0

3	003	基 座	LCP(EI130)	1	
2	002	接 触 件	黄 铜	N*	镀锡
1	001	焊 片	磷青铜	2	镀锡
序号	图 号	名 称	材 料	数 量	附 件

尺寸公差	角度公差	品 名:	CF.XH-AB	审 核	章 松
X. ±0.3	.X° ±0.1°	图 号:	CF.GG.XH.020	批 准	周伟国
.X ±0.2	.XX° ±0.05°	比例:	--	页 数:	1/1
.XX ±0.15	.XXX° ±0.005°	单 位:	mm	版 本:	A



安装 P.B.C 板  
Recommended P.B.C.Layout



## X-ON Electronics

Largest Supplier of Electrical and Electronic Components

*Click to view similar products for [Headers & Wire Housings](#) category:*

*Click to view products by [Boom](#) manufacturer:*

Other Similar products are found below :

[95000-104TRLF](#) [10135584-644402LF](#) [DF62W-EP2022PCA](#) [95000-106TRLF](#) [DF62W-2022SCA](#) [DF62W-EP2022PC](#) [2203348](#) [DF62W-2022SC](#) [1084018](#) [1029039](#) [1084017](#) [802-10-012-10-002000](#) [1112640](#) [1112639](#) [891-007-9SS-BST1T](#) [000-34000](#) [0008550134](#) [0009482033](#) [0009507031](#) [57102-F02-18ULF](#) [57102-S06-03LF](#) [57202-S52-04LF](#) [PCN6-15S-2.5E](#) [0039019024](#) [58102-G61-06LF](#) [582553-1](#) [0009485154](#) [0009508121](#) [0022285053](#) [0050291907](#) [018731A](#) [LY20-4P-DT1-P1E-BR](#) [02.125.8002.8](#) [60101931](#) [60598-1 \(Cut Strip\)](#) [M1625-3R/100](#) [61062-3](#) [61082-181009](#) [CSU011177004](#) [636-1427](#) [638009-1](#) [641938-9](#) [641991-4](#) [644168-1](#) [644827-2](#) [647662-1](#) [65039-019ELF](#) [65692-001LF](#) [65781-018](#) [65781-047](#)