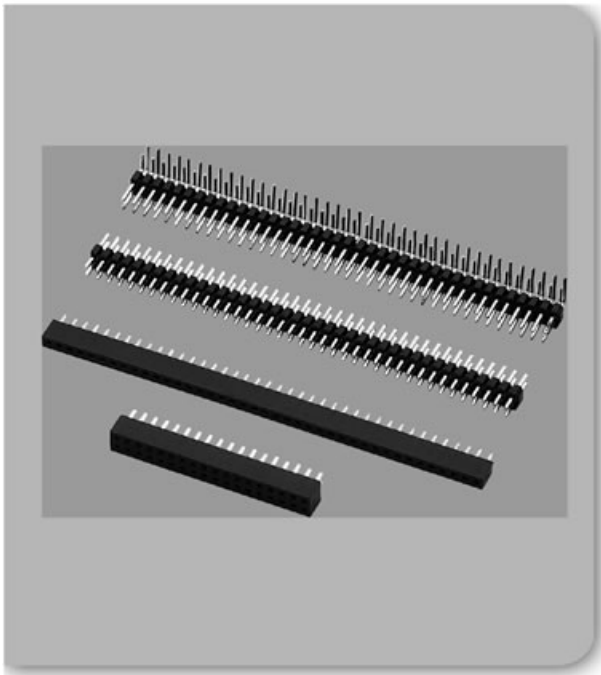
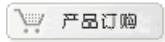


产品详细信息 introduce

线对板连接器 >> Du Pont2.0



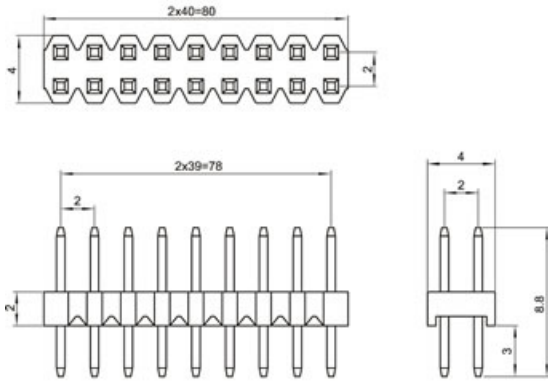
◆ SPECIFICATIONS

Unit:mm

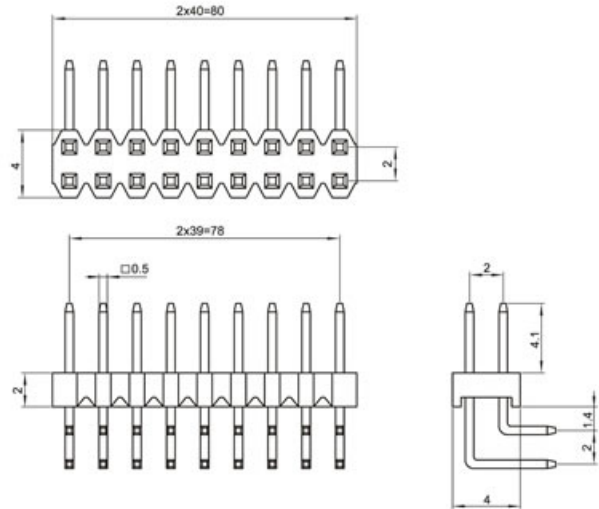
- ◇ Poles: (YS)2~25x2, (AS, WAS)2~40x2
- ◇ Applicable wire: AWG#26-#30
- ◇ Voltage rating: 250V DC/AC
- ◇ Current rating: 1.0A
- ◇ Withstand voltage: 800V AC
- ◇ Working Temperature: -25°C ~ +85°C
- ◇ Insulation resistance: ≥ 1000MΩ
- ◇ Contact resistance: ≤ 0.02Ω

UL:Recognized No.E309635
RoHS-specification and Halogen-free products

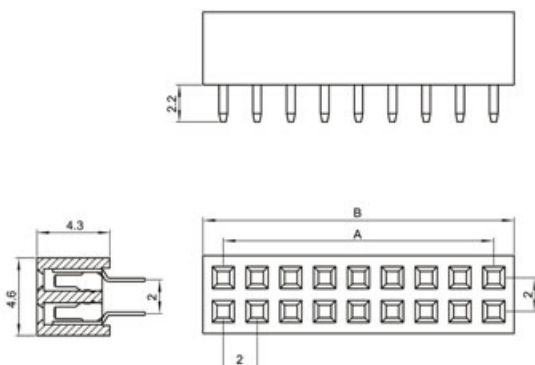
Du Pont2.0-2xnA



Du Pont2.0-2xnAW

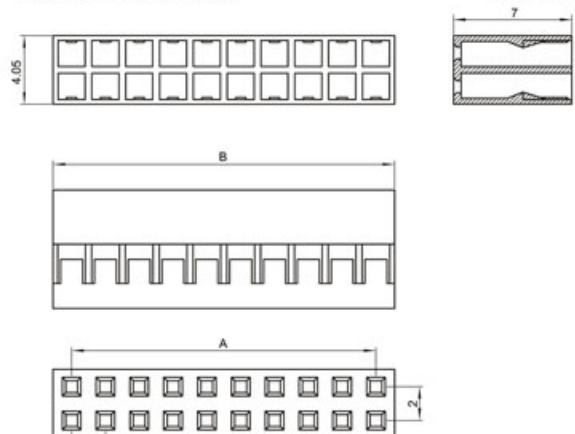


Du Pont2.0 排母

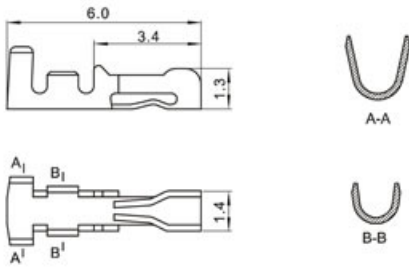


Du Pont2.0-2xnY

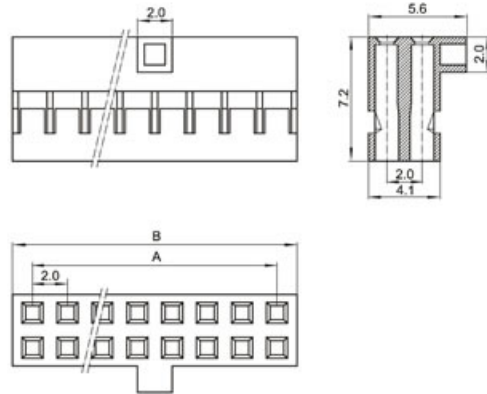
Unit:mm



Du Pont2.0-PT

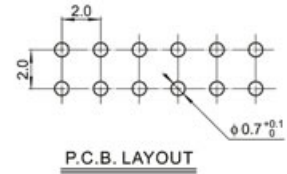


Du Pont2.0-2xnYS



Poles	Type	Size(mm)	
		A	B
4	Du Pont-2x2A	2.0	4.0
6	Du Pont-2x3A	4.0	6.0
8	Du Pont-2x4A	6.0	8.0
10	Du Pont-2x5A	8.0	10.0
12	Du Pont-2x6A	10.0	12.0
14	Du Pont-2x7A	12.0	14.0
16	Du Pont-2x8A	14.0	16.0
18	Du Pont-2x9A	16.0	18.0

Poles	Type	Size(mm)	
		A	B
20	Du Pont-2x10A	18.0	20.0
22	Du Pont-2x11A	20.0	22.0
24	Du Pont-2x12A	22.0	24.0
26	Du Pont-2x13A	24.0	26.0
28	Du Pont-2x14A	26.0	28.0
30	Du Pont-2x15A	28.0	30.0
...
50	Du Pont-2x25A	48.0	50.0



点击次数: 1244 发布时间: 2010-6-14 【打印】 【返回】

产品订购

X-ON Electronics

Largest Supplier of Electrical and Electronic Components

Click to view similar products for [Headers & Wire Housings](#) category:

Click to view products by [Boom](#) manufacturer:

Other Similar products are found below :

[95000-104TRLF](#) [10135584-644402LF](#) [DF62W-EP2022PCA](#) [95000-106TRLF](#) [DF62W-2022SCA](#) [DF62W-EP2022PC](#) [2203348](#) [DF62W-2022SC](#) [1084018](#) [1029039](#) [1084017](#) [802-10-012-10-002000](#) [1112640](#) [1112639](#) [891-007-9SS-BST1T](#) [000-34000](#) [0008550134](#) [0009482033](#) [0009507031](#) [57102-F02-18ULF](#) [57102-S06-03LF](#) [57202-S52-04LF](#) [PCN6-15S-2.5E](#) [0039019024](#) [58102-G61-06LF](#) [582553-1](#) [0009485154](#) [0009508121](#) [0022285053](#) [0050291907](#) [018731A](#) [LY20-4P-DT1-P1E-BR](#) [02.125.8002.8](#) [60101931](#) [60598-1 \(Cut Strip\)](#) [M1625-3R/100](#) [61062-3](#) [61082-181009](#) [CSU011177004](#) [636-1427](#) [638009-1](#) [641938-9](#) [641991-4](#) [644168-1](#) [644827-2](#) [647662-1](#) [65039-019ELF](#) [65692-001LF](#) [65781-018](#) [65781-047](#)