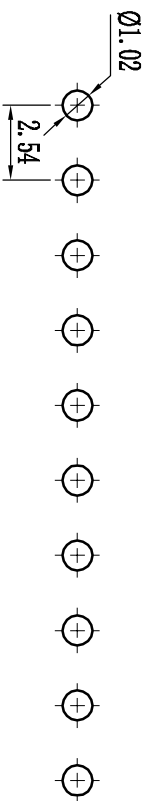
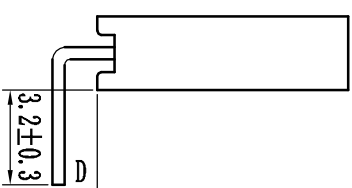
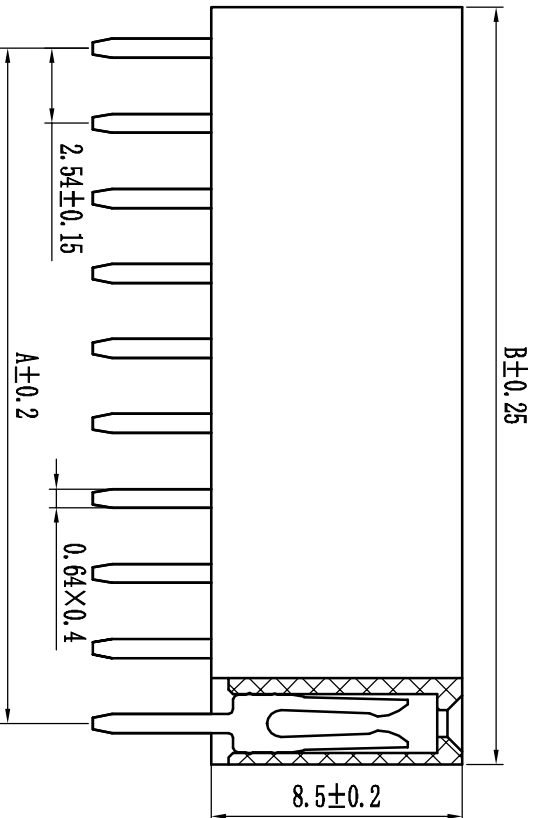
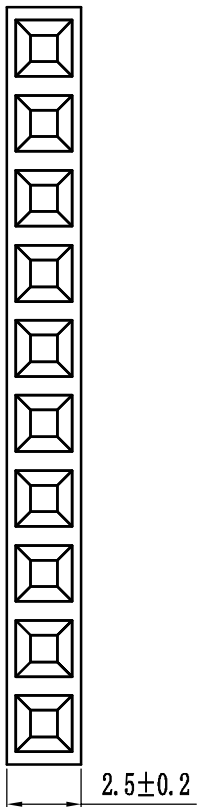
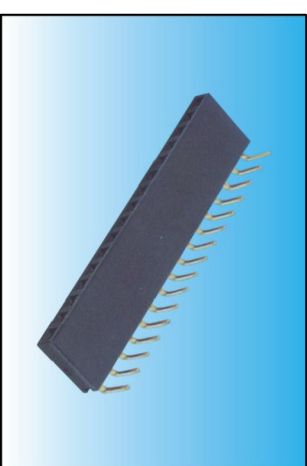


|      |       |        |
|------|-------|--------|
| Pin数 | 尺寸A   | 尺寸B    |
| 1X2  | 2.54  | 5.48   |
| 1X3  | 5.08  | 8.02   |
| 1X4  | 7.62  | 10.56  |
| 1X5  | 10.16 | 13.10  |
| 1X6  | 12.70 | 15.64  |
| 1X7  | 15.24 | 18.18  |
| 1X8  | 17.78 | 20.72  |
| 1X9  | 20.32 | 23.26  |
| 1X10 | 22.86 | 25.80  |
| 1X11 | 25.40 | 28.34  |
| 1X12 | 27.94 | 30.88  |
| 1X13 | 30.48 | 33.42  |
| 1X14 | 33.02 | 35.96  |
| 1X15 | 35.56 | 38.50  |
| 1X16 | 38.10 | 41.04  |
| 1X17 | 40.64 | 43.58  |
| 1X18 | 43.18 | 46.12  |
| 1X19 | 45.72 | 48.66  |
| 1X20 | 48.26 | 51.20  |
| 1X21 | 50.80 | 53.74  |
| 1X22 | 53.34 | 56.28  |
| 1X23 | 55.88 | 58.82  |
| 1X24 | 58.42 | 61.36  |
| 1X25 | 60.96 | 63.90  |
| 1X26 | 63.50 | 66.44  |
| 1X27 | 66.04 | 68.98  |
| 1X28 | 68.58 | 71.52  |
| 1X29 | 71.12 | 74.06  |
| 1X30 | 73.66 | 76.60  |
| 1X31 | 76.20 | 79.14  |
| 1X32 | 78.74 | 81.68  |
| 1X33 | 81.28 | 84.22  |
| 1X34 | 83.82 | 86.76  |
| 1X35 | 86.36 | 89.30  |
| 1X36 | 88.90 | 91.84  |
| 1X37 | 91.44 | 94.38  |
| 1X38 | 93.98 | 96.92  |
| 1X39 | 96.52 | 99.46  |
| 1X40 | 99.06 | 102.00 |



PCB LAYOUT



技术规范:

- 额定电流 : 3AMP
- 适用温度 : -40℃to+105℃
- 接触电阻 : 20mΩ Max
- 绝缘电阻 : 1000MΩ Min
- 耐电压 : AC 1000V
- 绝缘材料 : Polyester (UL94V-0)
- Standard: PBT
- 端子材质 : Brass
- 电镀规范 : Au or Sn Over 50u" Ni

F 5-85-1-XX-X-XX-S-00Y-0

| 排母系列     | 间距       | 整高       | 单排   | Pin位     | 电镀     | 材质     | 角度      | 端子          | 备注     |
|----------|----------|----------|------|----------|--------|--------|---------|-------------|--------|
| 1-0.8mm  | 2-1.0mm  | 1.0-1.0  | 1-单排 | T*40/50P | A-1u"  | A-T16  | S-180°  | 22.5mm间距225 | 0-常用规格 |
| 3-1.27mm | 1.5-1.5  | 1.6-1.6  | 2-双排 | 2*40/50P | B-5u"  | B-P166 | R-90°   | 11.6mm间距116 | 1-内注   |
| 4-2.0mm  | 1.7-1.7  | 1.7-1.7  | 3-三排 | 3*40/50P | C-5u"  | C-P166 | W-SMT   | 12.2mm间距122 | 2-大小定位 |
| 5-2.54mm | 2.0-2.0  | 2.0-2.0  | 4-四排 | 4*40/50P | D-10u" | D-P167 | W-模铸    | 000-特制端子    | 3-带凸点  |
| 6-3.96mm | 2.54-2.5 | 2.54-2.5 | .    | .        | E-10u" | E-P167 | L-2度    | 000-特制四面端子  | 4-穿孔   |
| 7-5.08mm | .        | .        | .    | .        | F-50u" | F-P167 | Y-135°  | 000-特制四面端子  | 5-重1.8 |
| .        | .        | .        | .    | .        | G-半空槽  | G-P167 | Z-侧插    | 000-特制四面端子  | 6-重2.2 |
| .        | .        | .        | .    | .        | H-半空槽  | H-P167 | L-卧式SMT | 注: 长插针以短针计算 | 7-重3.0 |
| .        | .        | .        | .    | .        | .      | .      | .       | 其它另做说明      | 8-重6.0 |

# 东莞康导电子科技有限公司

角度

±2°

X.

±0.25

设计

日期

X.

±0.15

审核

日期

.XX

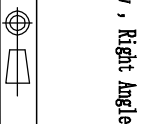
±0.05

批准

日期

.XX

|      |      |      |  |    |    |      |     |    |    |        |    |
|------|------|------|--|----|----|------|-----|----|----|--------|----|
| 变更单号 | 变更标记 | 变更日期 | 变更人  | 审核 | 批准 | 未标公差 | 比例  | 单位 | 页数 | 1 OF 1 | A0 |
|      |      |      |  |    |    |      | 1:1 | mm |    |        |    |
| 描述   |      |      | <p>2.54mm单排母, 90°, 整高8.5mm<br/> Spec: 2.54mm Female Header, Single Row, Right Angle<br/> Positions: 1X2~1X40<br/> Plastics Height: 8.5mm</p> |    |    |      |     |    |    |        |    |



## X-ON Electronics

Largest Supplier of Electrical and Electronic Components

*Click to view similar products for [Headers & Wire Housings](#) category:*

*Click to view products by [Boom](#) manufacturer:*

Other Similar products are found below :

[95000-104TRLF](#) [10135584-644402LF](#) [DF62W-EP2022PCA](#) [95000-106TRLF](#) [DF62W-2022SCA](#) [DF62W-EP2022PC](#) [2203348](#) [DF62W-2022SC](#) [1084018](#) [1029039](#) [1084017](#) [802-10-012-10-002000](#) [1112640](#) [1112639](#) [891-007-9SS-BST1T](#) [000-34000](#) [0008550134](#) [0009482033](#) [0009507031](#) [57102-F02-18ULF](#) [57102-S06-03LF](#) [57202-S52-04LF](#) [PCN6-15S-2.5E](#) [0039019024](#) [58102-G61-06LF](#) [582553-1](#) [0009485154](#) [0009508121](#) [0022285053](#) [0050291907](#) [018731A](#) [LY20-4P-DT1-P1E-BR](#) [02.125.8002.8](#) [60101931](#) [60598-1 \(Cut Strip\)](#) [M1625-3R/100](#) [61062-3](#) [61082-181009](#) [CSU011177004](#) [636-1427](#) [638009-1](#) [641938-9](#) [641991-4](#) [644168-1](#) [644827-2](#) [647662-1](#) [65039-019ELF](#) [65692-001LF](#) [65781-018](#) [65781-047](#)