

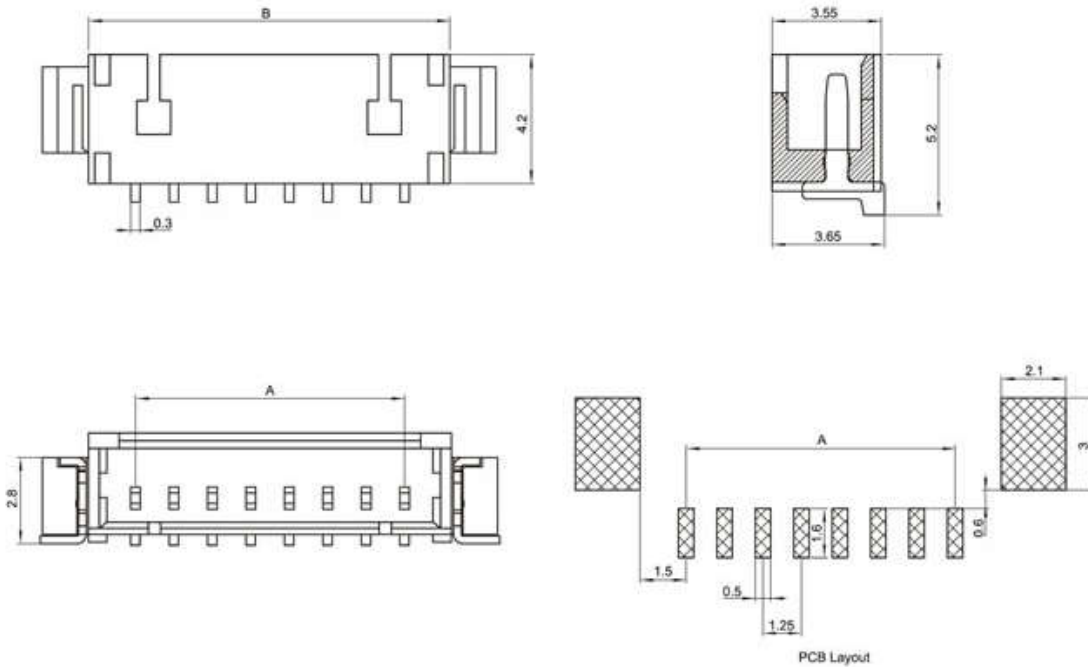
SPECIFICATIONS

Unit:mm

- ◇ Poles: 2~16
- ◇ Applicable wire: AWG#28-#22
- ◇ Voltage rating: 125V DC/AC
- ◇ Current rating: 1.0A
- ◇ Withstand voltage: 500V AC
- ◇ Working Temperature: -25°C ~ +85°C
- ◇ Insulation resistance: $\geq 1000M\Omega$
- ◇ Contact resistance: $\leq 0.03\Omega$
- ◇ Applicable PC board thickness: 0.6~1.2mm

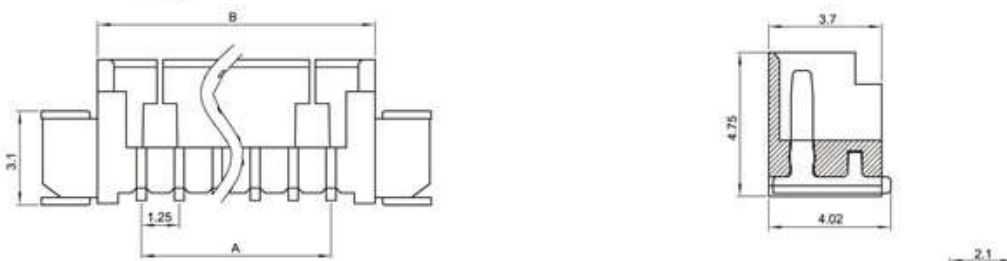
UL:Recognized No.E309635
 RoHS-specification and
 Halogen-free products

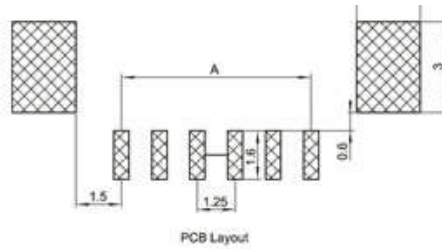
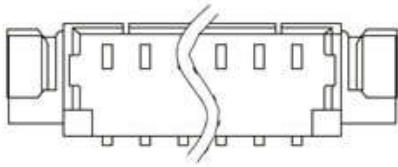
1.25T-2-nA 卧贴



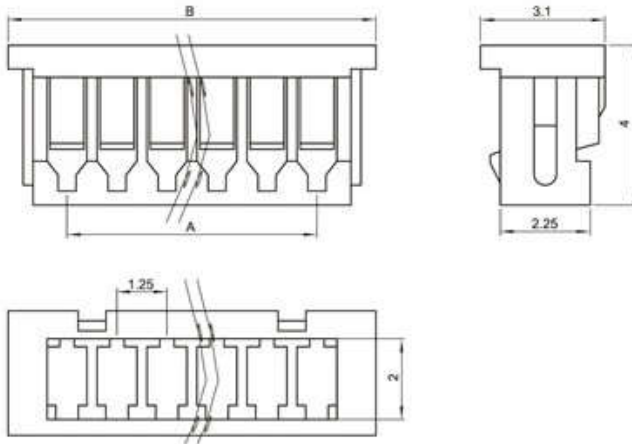
1.25T-2-nA 立贴

Unit:mm

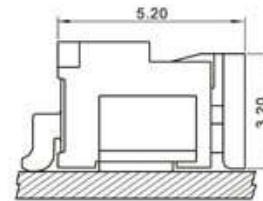
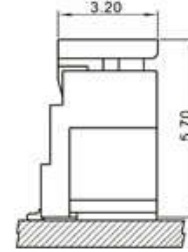




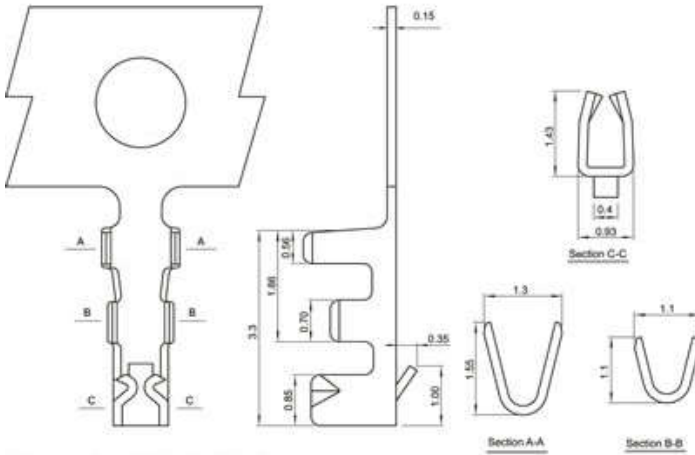
1.25T-2-nY



Mounting Measurement



1.25T-1-PT



Terminal(1.25T-1)

Type	Applicable wires		O.D of wire ins mm	Material	Finish
	mm ²	AWG#			
1.25T-1	0.8~0.3	32~28	0.8mm(max)	Phos.bronze	Tin-plated

Poles	Type	Size(mm)		Poles	Type	Size(mm)	
		A	B			A	B
2	1.25T-2-2A	1.25	4.25	2	1.25T-2-2Y	1.25	4.2
3	1.25T-2-3A	2.50	5.50	3	1.25T-2-3Y	2.50	5.45
4	1.25T-2-4A	3.75	6.75	4	1.25T-2-4Y	3.75	6.7
5	1.25T-2-5A	5.00	8.00	5	1.25T-2-5Y	5.00	7.95
6	1.25T-2-6A	6.25	9.25	6	1.25T-2-6Y	6.25	9.2
7	1.25T-2-7A	7.50	10.50	7	1.25T-2-7Y	7.50	10.45
8	1.25T-2-8A	8.75	11.75	8	1.25T-2-8Y	8.75	11.7
9	1.25T-2-9A	10.00	13.00	9	1.25T-2-9Y	10.00	12.95
10	1.25T-2-10A	11.25	14.25	10	1.25T-1-10Y	11.25	14.2
11	1.25T-2-11A	12.50	15.50	11	1.25T-1-11Y	12.50	15.45
12	1.25T-2-12A	13.75	16.75	12	1.25T-1-12Y	13.75	16.7
13	1.25T-2-13A	15.00	18.00	13	1.25T-1-13Y	15.00	17.95
14	1.25T-2-14A	16.25	19.25	14	1.25T-1-14Y	16.25	19.2
15	1.25T-2-15A	17.50	20.50	15	1.25T-1-15Y	17.50	20.45
16	1.25T-2-16A	18.75	21.75	16	1.25T-1-16Y	18.75	21.7

X-ON Electronics

Largest Supplier of Electrical and Electronic Components

Click to view similar products for [Headers & Wire Housings](#) category:

Click to view products by [Boom](#) manufacturer:

Other Similar products are found below :

[95000-104TRLF](#) [10135584-644402LF](#) [DF62W-EP2022PCA](#) [95000-106TRLF](#) [DF62W-2022SCA](#) [DF62W-EP2022PC](#) [2203348](#) [DF62W-2022SC](#) [1084018](#) [1029039](#) [1084017](#) [802-10-012-10-002000](#) [1112640](#) [1112639](#) [891-007-9SS-BST1T](#) [000-34000](#) [0008550134](#) [0009482033](#) [0009507031](#) [57102-F02-18ULF](#) [57102-S06-03LF](#) [57202-S52-04LF](#) [PCN6-15S-2.5E](#) [0039019024](#) [58102-G61-06LF](#) [582553-1](#) [0009485154](#) [0009508121](#) [0022285053](#) [0050291907](#) [018731A](#) [LY20-4P-DT1-P1E-BR](#) [02.125.8002.8](#) [60101931](#) [60598-1 \(Cut Strip\)](#) [M1625-3R/100](#) [61062-3](#) [61082-181009](#) [CSU011177004](#) [636-1427](#) [638009-1](#) [641938-9](#) [641991-4](#) [644168-1](#) [644827-2](#) [647662-1](#) [65039-019ELF](#) [65692-001LF](#) [65781-018](#) [65781-047](#)