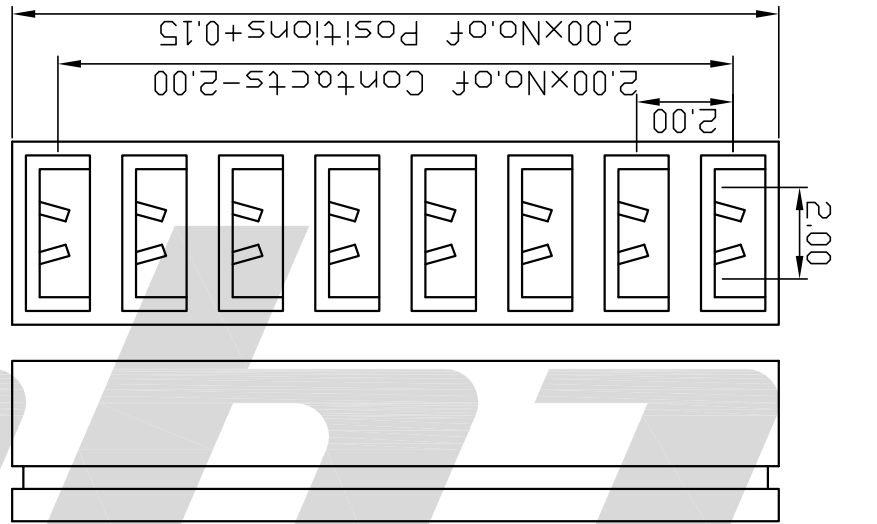
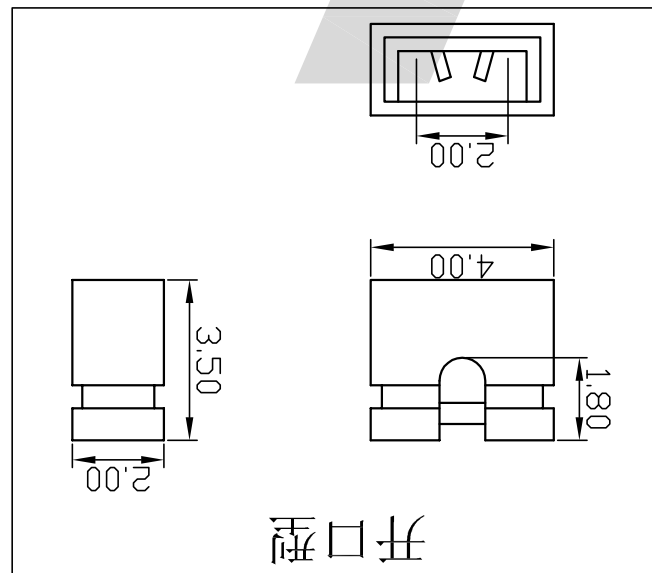
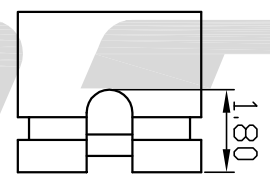


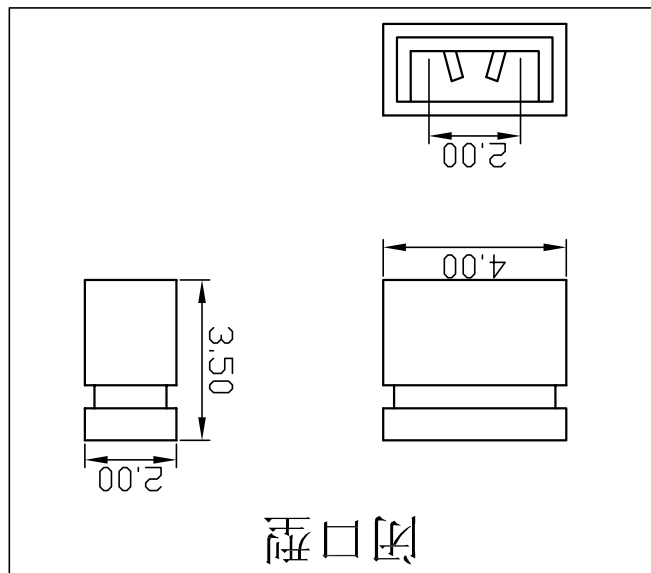
REV		ZONE	LTR	DESCRIPTION	ECN NO.	Date	Angle ~ ± 3°		
A				RELEASED		14/12-07	.XXX ~ ±0.20		
B							.XX ~ ±0.25		
C							.X ~ ±0.30		
D							Tolerance Unless		
E							Otherwise Specified		
Drawing By		Date		Units		Scale	10:1		
Approval By		Date		Check By		Date		Drawing By	
Date		Date		Date		Date		Date	
Title		Sheet		Date		Title		Thirt Angle Projection	
2.00短略帽		1 of 1		2007/12/14		2.00短略帽		File Path	
LY-DLM201-2-021		Drawing No.		Drawing No.		Drawing No.		Drawing No.	



多连体



开口型



闭口型

① Connector Type:		11=Mini Jumper
② Pth:		2=2.00mm
③ Plastics Height:		3=3.5mm
④ Number of Contacts:		01=Single Type
⑤ Function:		1=C=Close Type
⑥ Contact Plated:		0=Tin
⑦ Color:		B=Black U=Blue
		R=Red W=White
		Y=Yellow G=Grey
		20=(1x20)Parallel Type
		10=(1x10)Parallel Type
		04=(1x4)Parallel Type
		3=Gold 5u"
		2=Gold 3u"
		4=Gold 10u"
		5=Gold 15u"
		6=Gold 30u"

Ordering Code

- ① XX
- ② X
- ③ XX
- ④ X
- ⑤ X
- ⑥ X
- ⑦ X

SPECIFICATIONS
 Current Rating: 1.5AMP
 Contact Resistance: 20mΩ Max
 Insulation Resistance: 1000MΩ Min
 Withstand Voltage: 500V AC/minute
 Operation Temperature: -40°C to +105°C
 Contact Material: Phosphor bronze
 Contact Plating: Au or Sn over 50 μ NI
 Insulator Material: Polyester(UL94V-0)
 Standard: PBT



X-ON Electronics

Largest Supplier of Electrical and Electronic Components

Click to view similar products for [Headers & Wire Housings](#) category:

Click to view products by [Boom](#) manufacturer:

Other Similar products are found below :

[95000-104TRLF](#) [10135584-644402LF](#) [DF62W-EP2022PCA](#) [95000-106TRLF](#) [DF62W-2022SCA](#) [DF62W-EP2022PC](#) [2203348](#) [DF62W-2022SC](#) [1084018](#) [1029039](#) [1084017](#) [802-10-012-10-002000](#) [1112640](#) [1112639](#) [891-007-9SS-BST1T](#) [000-34000](#) [0008550134](#) [0009482033](#) [0009507031](#) [57102-F02-18ULF](#) [57102-S06-03LF](#) [57202-S52-04LF](#) [PCN6-15S-2.5E](#) [0039019024](#) [58102-G61-06LF](#) [582553-1](#) [0009485154](#) [0009508121](#) [0022285053](#) [0050291907](#) [018731A](#) [LY20-4P-DT1-P1E-BR](#) [02.125.8002.8](#) [60101931](#) [60598-1 \(Cut Strip\)](#) [M1625-3R/100](#) [61062-3](#) [61082-181009](#) [CSU011177004](#) [636-1427](#) [638009-1](#) [641938-9](#) [641991-4](#) [644168-1](#) [644827-2](#) [647662-1](#) [65039-019ELF](#) [65692-001LF](#) [65781-018](#) [65781-047](#)