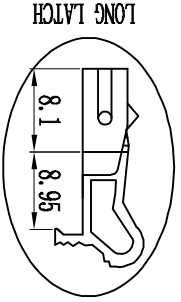
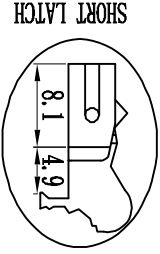
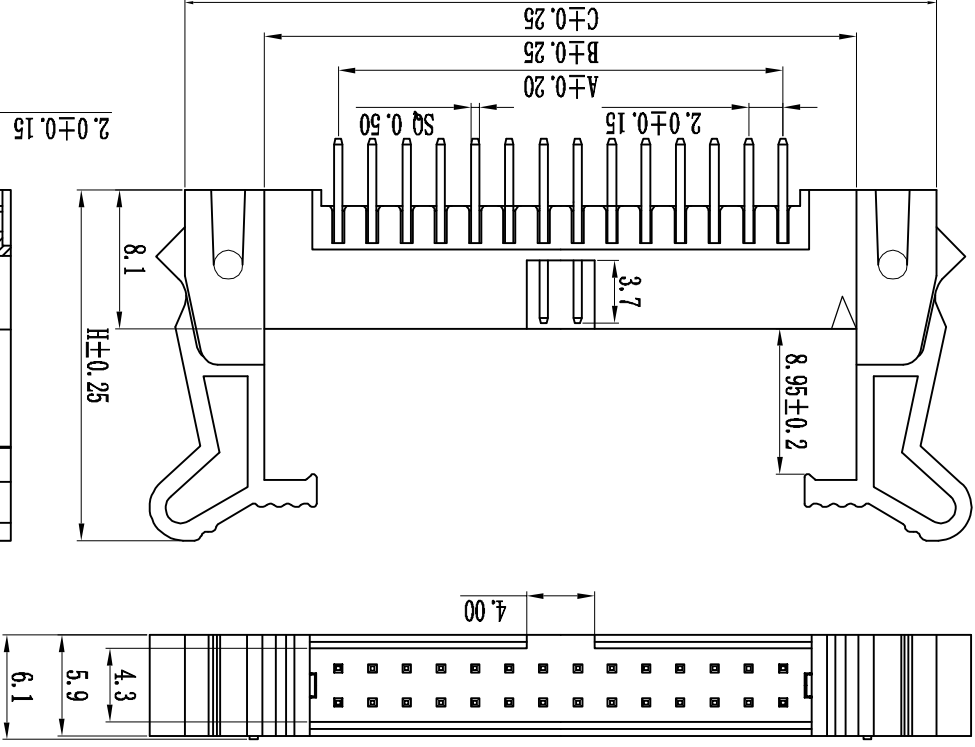
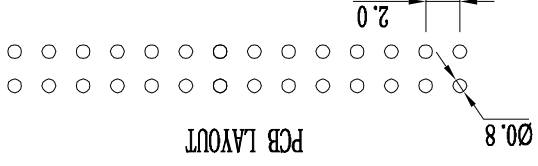


Pin数	尺寸A	尺寸B	尺寸C
2x6	10.00	18.30	27.90
2x8	14.00	22.30	31.90
2x10	18.00	26.30	35.90
2x12	22.00	30.30	39.90
2x14	26.00	34.30	43.90
2x16	30.00	38.30	47.90
2x18	34.00	42.30	51.90
2x20	38.00	46.30	55.90
2x22	42.00	50.30	59.90
2x24	46.00	54.30	63.90
2x26	50.00	58.30	67.90
2x28	54.00	62.30	71.90
2x30	58.00	66.30	75.90
2x32	62.00	70.30	79.90
2x34	66.00	74.30	83.90
2x36	70.00	78.30	87.90
2x38	74.00	82.30	91.90
2x40	78.00	86.30	95.90
2x42	82.00	90.30	99.90
2x44	86.00	94.30	103.90
2x46	90.00	98.30	107.90
2x48	94.00	102.30	111.90
2x50	98.00	106.30	115.90
2x52	102.00	110.30	119.90
2x54	106.00	114.30	123.90
2x56	110.00	118.30	127.90
2x58	114.00	122.30	131.90
2x60	118.00	126.30	135.90



技术规范:

额定电流: 1.5AMP

适用温度: -40°C to +105°C

接触电阻: 20mΩ Max

绝缘电阻: 1000MΩ Min

耐电压: AC 500V

绝缘材料: Polyester (UL94V-0)

Standard: PBT

端子材质: Brass

电镀规范: Au or Sn Over 50u" Ni

流水号	耳长	耳长	颜色	缺PIN	材质	角度	电铸	PM位	间距	牛角系列
0=常用规格	A=长耳	B=短耳	B=Black	K-20-20	A-PBT	S=180°	A-1u"	06_64P	1-1.27mm	1-1.27mm
1=			G=Grey		B-PA46	R=90°	B-2u"		2-2.0mm	2-2.0mm
2=	C=无耳		Y=Yellow		C-PAT	M=SMT	C-5u"		3-2.54mm	3-2.54mm
			U=Blue		D-PA9T	E-LCP	D-15u"		7.1=71(间距)	7.1=71(间距)
			R=Red		E-LCP	F=铜	E-15u"		1.27#间距2.54	1.27#间距2.54
							F-半金鍍		7.2=72	7.2=72
									9.0=90	9.0=90
									13.1=131	13.1=131

变更单号	变更日期	变更标记	变更人	审核	批准	描述
						角度 ±2°
						设计 ±0.25 X
						审核 ±0.15 .X
						批准 ±0.05 .XX

规格	型号	物料	页码
2.00mm间距牛角, 180°, 立高8.1mm	Spec: 2.00mm Ejector Header, Dual Row, 180° Positions: 2x6~2x40	Plastics Height: 8.1mm	1 OF 1



X-ON Electronics

Largest Supplier of Electrical and Electronic Components

Click to view similar products for [Headers & Wire Housings](#) category:

Click to view products by [Boom](#) manufacturer:

Other Similar products are found below :

[95000-104TRLF](#) [10135584-644402LF](#) [DF62W-EP2022PCA](#) [95000-106TRLF](#) [DF62W-2022SCA](#) [DF62W-EP2022PC](#) [2203348](#) [DF62W-2022SC](#) [1084018](#) [1029039](#) [1084017](#) [802-10-012-10-002000](#) [1112640](#) [1112639](#) [891-007-9SS-BST1T](#) [000-34000](#) [0008550134](#) [0009482033](#) [0009507031](#) [57102-F02-18ULF](#) [57102-S06-03LF](#) [57202-S52-04LF](#) [PCN6-15S-2.5E](#) [0039019024](#) [58102-G61-06LF](#) [582553-1](#) [0009485154](#) [0009508121](#) [0022285053](#) [0050291907](#) [018731A](#) [LY20-4P-DT1-P1E-BR](#) [02.125.8002.8](#) [60101931](#) [60598-1 \(Cut Strip\)](#) [M1625-3R/100](#) [61062-3](#) [61082-181009](#) [CSU011177004](#) [636-1427](#) [638009-1](#) [641938-9](#) [641991-4](#) [644168-1](#) [644827-2](#) [647662-1](#) [65039-019ELF](#) [65692-001LF](#) [65781-018](#) [65781-047](#)