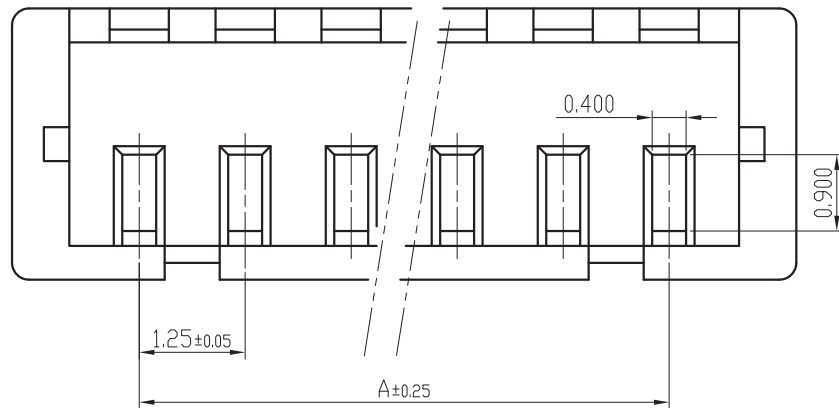
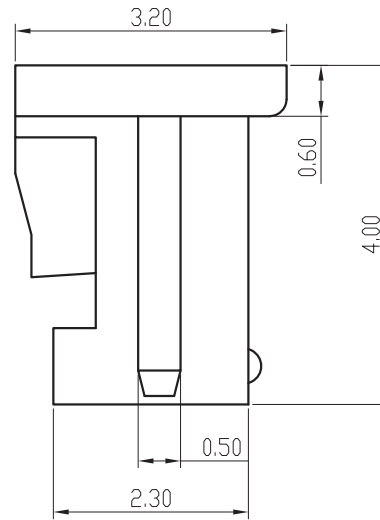
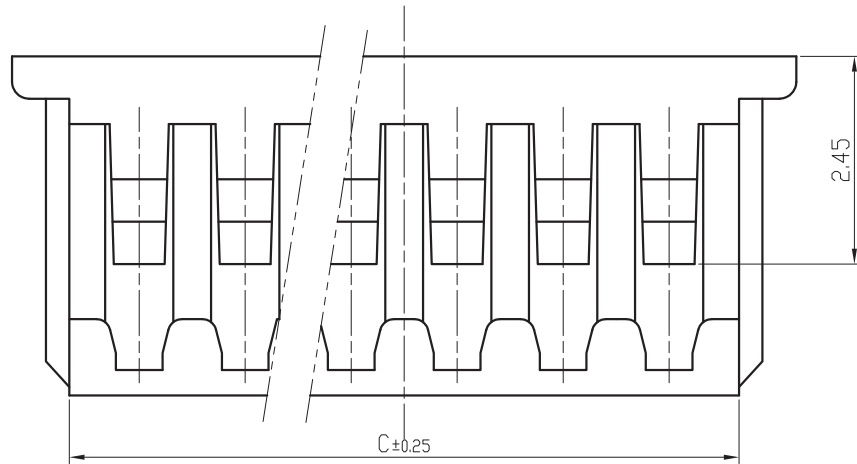
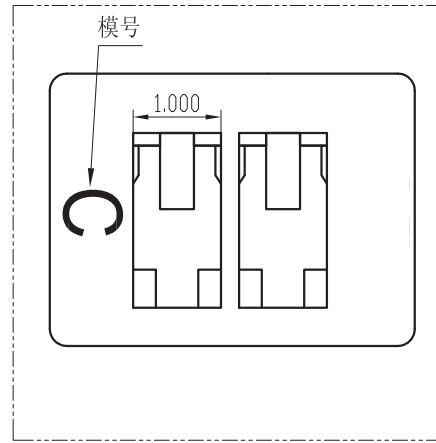
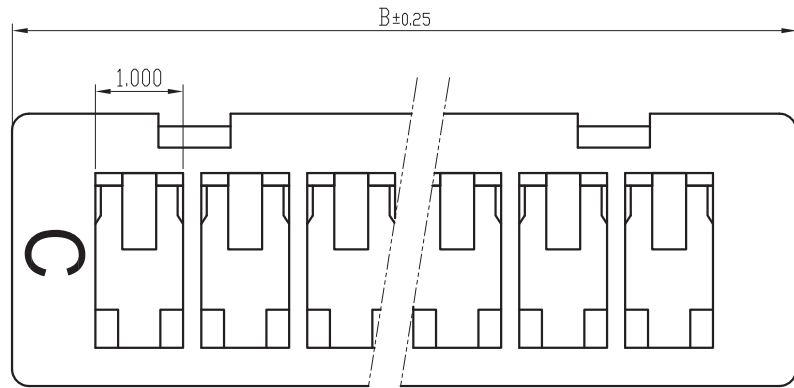


标记 MARK.	更改内容 MODIFICATION	日期 DATE	修改 DRAW	核准 APPROVE



技术要求Specification:

- 1、材质Material: PA66 UL94V-0;
- 2、额定电流 Current rating:1.0A AC,DC
- 3、额定电压 Voltage rating: 50V AC,DC
- 4、温度范围 Temperature range:-25℃to+85℃
- 5、接触电阻 Contact resistance:≤20mΩ
- 6、绝缘电阻 Insulation resistance:≥100MΩ
- 7、耐压 Withstand voltage:250V AC/minute
- 8、塑件表面平整光洁,无明显的毛刺、气泡、变形、浇口拉伤、缺料等不良现象。

Plastic surface smooth and clean, no obvious burrs, bubbles, distortion, gate strain, lack of material and other undesirable phenomena.

线数			尺寸		
	A	B	C		
2	SH12500-2Y	SH12501-2Y	1.25	4.30	3.00
3	SH12500-3Y	SH12501-3Y	2.50	5.55	4.25
4	SH12500-4Y	SH12501-4Y	3.75	6.80	5.50
5	SH12500-5Y	SH12501-5Y	5.00	8.05	6.75
6	SH12500-6Y	SH12501-6Y	6.25	9.30	8.00
7	SH12500-7Y	SH12501-7Y	7.50	10.55	9.25
8	SH12500-8Y	SH12501-8Y	8.75	11.80	10.50
9	SH12500-9Y	SH12501-9Y	10.00	13.05	11.75
10	SH12500-10Y	SH12501-10Y	11.25	14.30	13.00
11	SH12500-11Y	SH12501-11Y	12.50	15.55	14.25
12	SH12500-12Y	SH12501-12Y	13.75	16.80	15.50
13	SH12500-13Y	SH12501-13Y	15.00	18.05	16.75
14	SH12500-14Y	SH12501-14Y	16.25	19.30	18.00
15	SH12500-15Y	SH12501-15Y	17.50	20.55	19.25
16	SH12500-16Y	SH12501-16Y	18.75	21.80	20.50

TOLERANCE UNLESS OTHERWISE SPECIFIED		*: Inspection Item					
.X±0.30	X.° ±1°	(NO.)	:Cp/Cpk and SPC Control Item				名称 TITLE
.XX±0.2	.X° ±	材料 MATERIAL	PA66	编号 DWG NO.	BX-MX1.25-7PJk	单位 UNIT	m m
.XXX±0.10	.XX° ±	料厚 THICK		比例 SCALE	1:1	版本 RE V.	A
制图 DRAWIN		料宽 WIDE		角法 PROJ.		规格书	
审核 CHECKED		日期 DATE					
批准 APPROVE							

X-ON Electronics

Largest Supplier of Electrical and Electronic Components

Click to view similar products for [Headers & Wire Housings](#) category:

Click to view products by [Bossie](#) manufacturer:

Other Similar products are found below :

[0015917161](#) [0022155065](#) [57102-F02-18ULF](#) [58102-G61-06LF](#) [582553-1](#) [01.001.5753.1](#) [0050291907](#) [02.125.8002.8](#) [609-3404](#) [61062-3](#)
[CSU011177004](#) [622-0430](#) [622-3653LF](#) [63453-116](#) [636-1030](#) [636-1427](#) [636-3427](#) [636-4007](#) [641938-9](#) [65495-038](#) [65692-001LF](#) [65781-018](#)
[65781-047](#) [65817-010LF](#) [65817-015LF](#) [67095-007LF](#) [67601157](#) [68631-112](#) [68645-018](#) [699319-000](#) [70.362.1628.0](#) [70-4210](#) [70-4226B](#) [70-](#)
[4853B](#) [71.350.2428.0](#) [733-134](#) [733-162](#) [760-3052](#) [MHR-64-VUAL](#) [80.063.4001.1](#) [800-90-001-10-001000](#) [801-43-002-10-013000](#)
[801-43-006-10-002000](#) [803-43-024-10-001000](#) [803-93-012-10-001000](#) [8-1437020-4](#) [819-22-004-30-001101](#) [820-22-006-30-001101](#)
[820-22-008-30-001101](#) [821-22-002-10-001101](#)