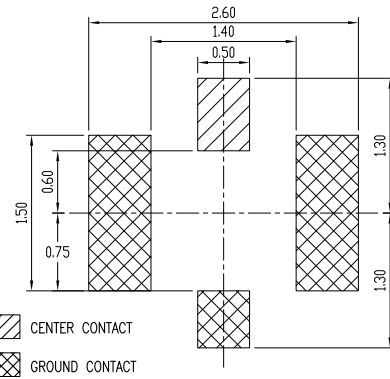
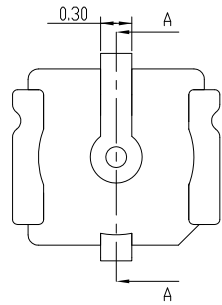


SECTION A-A



CENTER CONTACT
 GROUND CONTACT

RECOMMENDED PCB LAYOUT
(TOLERANCE: ±0.05)

REV	ECR#	DESCRIPTION	DRAWN/DATE	CHECKED/DATE	APPROVED/DATE
A	~	NEW DESIGN			
A1	~	ADD HOUSING C ANGLE			
B	~	ADD COLOUR OF HOUSING AND PACKING			

NOTES :

- 1.0. RATING :
 - 1.1. VOLTAGE : 60 VAC (R.M.S.)
 - 1.2. NOMINAL CHARACTERISTIC IMPEDANCE: 50 Ohm
 - 1.3. APPLICABLE FREQUENCY: DC ~ 6GHz
 - 1.4. VSWR: 1.3 MAX. (DC~3GHz), 1.5 MAX. (3~6GHz)
 - 1.5. TEMPERATURE : -40°C TO +85°C
- 2.0. ALL DIMENSIONS SHOULD BE CONTROLLED IN FAI.:
- 3.0. MARKED ∇ SHOULD BE CONTROLLED BY QIP.:
- 4.0. MATERIAL SEE BILL OF MATERIAL :

CONTROL POINT FAI : to	TOLERANCES UNLESS OTHERWISE SPECIFIED GENERAL X ±0.30 XX ±0.20 XXX ±0.10 XXX ±0.05	DRAWING	DATE		
		DESIGN	DATE		
CRITICAL (Cpk & Cp) : EX) = Places	ANGLES X ±3.0° XX ±2.0° XXX ±1.0°	CHECK	DATE		TITLE IPEX 内针 三代板端 IPEX3座子
MAJOR (QC CHECKED) : ▽ = Places	SCALE 1:1	APPROVED	DATE		SERIES BX-RF3-1.4Z0.85H SIZE A3
TOOL DESIGN DIMENSION : [T DIM] Places	SHEET 1/1	3D FILE		DRAWING NO	
EVALUATE REPORTES NUMBER	UNIT mm			REV B	
PRODUCT SPEC:					
PACKAGE SPEC:					

X-ON Electronics

Largest Supplier of Electrical and Electronic Components

Click to view similar products for [RF Connectors / Coaxial Connectors](#) category:

Click to view products by [Bossie](#) manufacturer:

Other Similar products are found below :

[89674-0827](#) [6059674-1](#) [630059-000](#) [6501-1071-002](#) [6769](#) [7002-1541-010](#) [7002-1572-002](#) [7004-1512-000](#) [7009-1511-004](#) [7101-1541-010](#)
[7101-1571-002](#) [7105-1521-002](#) [7145-1521-002](#) [7203-1571-003](#) [7209-1511-011](#) [7210-1511-040](#) [7242-1511-000](#) [7405-1521-005](#) [7405-1521-](#)
[802](#) [804S01D04M040](#) [8527](#) [8547](#) [FS11V](#) [877931](#) [8808-1511-001](#) [9049-9513-000](#) [9074-9513-000](#) [PL11C-026](#) [PL40-36](#) [9408-1113-000](#)
[980-8666-005](#) [11 SMA-50-2-6 / 111 NE](#) [11 SMA-50-3-6 / 111 NE](#) [11 SMA-50-2-6/111 NH](#) [1-201144-1](#) [120919](#) [R107003010W](#) [R112186000](#)
[R113053000W](#) [R113082097](#) [R113236000](#) [R114083000](#) [R114670000W](#) [R123415000W](#) [R124072220W](#) [R124076320](#) [R124076450](#)
[R124175123](#) [R124176123W](#) [R125075000W](#)