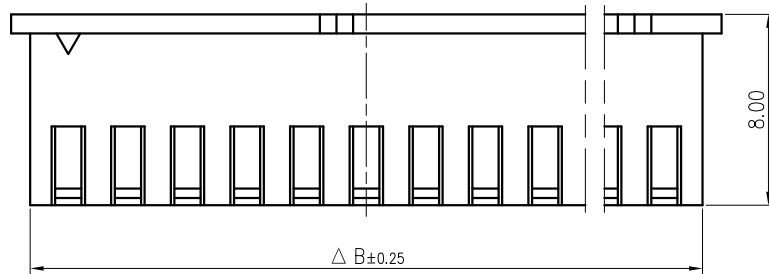
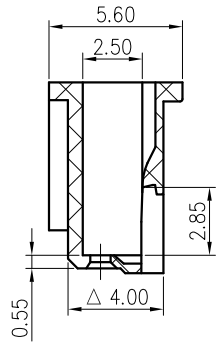
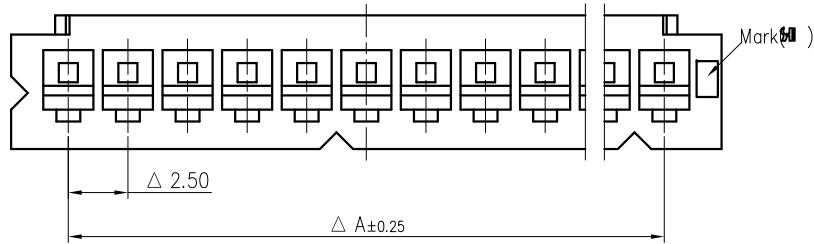


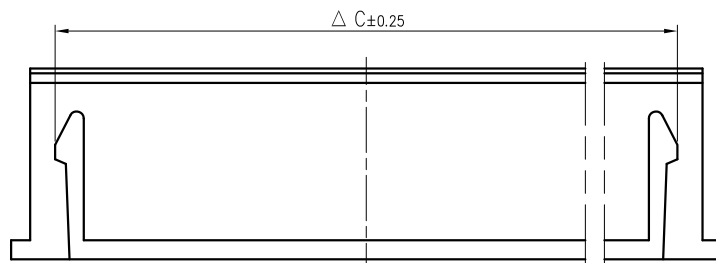
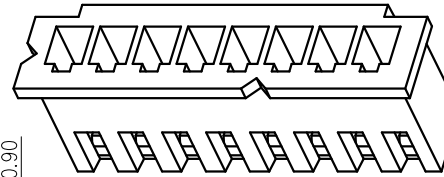
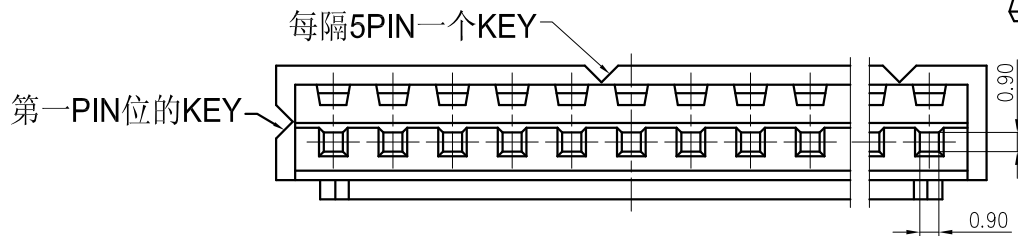
标记 MARK	更改内容 MODIFICATION	日期 DATE	修改 DRAW	核准 APPROVE



技术要求 Specification:

- 1、材质 Material: PA66 UL94V-0;
- 2、额定电流 Current rating: 3.0A AC, DC
- 3、额定电压 Voltage rating: 250V AC, DC
- 4、温度范围 Temperature range: -25°C to +85°C
- 5、接触电阻 Contact resistance: ≤ 20mΩ
- 6、绝缘电阻 Insulation resistance: ≥ 1000MΩ
- 7、耐压 Withstand voltage: 1000V AC/minute
- 8、塑件表面平整光洁, 无明显的毛刺、气泡、变形、浇口拉伤、缺料等不良现象。

Plastic surface smooth and clean, no obvious burrs, bubbles, distortion, gate strain, lack of material and other undesirable phenomena.



线数	型号	尺寸			
		A	B	C	D
2	SH25001-2Y	2.50	5.70	3.70	3.70
3	SH25001-3Y	5.00	8.20	6.20	6.20
4	SH25001-4Y	7.50	10.70	8.70	8.70
5	SH25001-5Y	10.00	13.20	11.20	11.20
6	SH25001-6Y	12.50	15.70	13.70	13.70
7	SH25001-7Y	15.00	18.20	16.20	16.20
8	SH25001-8Y	17.50	20.70	18.70	18.70
9	SH25001-9Y	20.00	23.20	21.20	21.20
10	SH25001-10Y	22.50	25.70	23.70	23.70
11	SH25001-11Y	25.00	28.20	26.20	26.20
12	SH25001-12Y	27.50	30.70	28.70	28.70
13	SH25001-13Y	30.00	33.20	31.20	31.20
14	SH25001-14Y	32.50	35.70	33.70	33.70
15	SH25001-15Y	35.00	38.20	36.20	36.20
16	SH25001-16Y	37.50	40.70	38.70	38.70

TOLERANCE UNLESS OTHERWISE SPECIFIED		*: Inspection Item				
.X±0.30	X.° ±1°	 :Cp/Cpk and SPC Control Item	材料 MATERIAL PA66			
.XX±0.20	.X° ±			料厚 THICK	编号 DWG NO.	BX-XH2.54-10PJk
.XXX±0.10	.XX° ±	料宽 WIDE	比例 SCALE	1:1	版本 REV.	A
制图 DRAWIN	审核 CHECKED	日期 DATE	角法 PROJ.		规格书	

X-ON Electronics

Largest Supplier of Electrical and Electronic Components

Click to view similar products for [Headers & Wire Housings](#) category:

Click to view products by [Bossie](#) manufacturer:

Other Similar products are found below :

[0015917161](#) [0022155065](#) [57102-F02-18ULF](#) [58102-G61-06LF](#) [582553-1](#) [01.001.5753.1](#) [0050291907](#) [02.125.8002.8](#) [609-3404](#) [61062-3](#)
[CSU011177004](#) [622-0430](#) [622-3653LF](#) [63453-116](#) [636-1030](#) [636-1427](#) [636-3427](#) [636-4007](#) [641938-9](#) [65495-038](#) [65692-001LF](#) [65781-018](#)
[65781-047](#) [65817-010LF](#) [65817-015LF](#) [67095-007LF](#) [67601157](#) [68631-112](#) [68645-018](#) [699319-000](#) [70.362.1628.0](#) [70-4210](#) [70-4226B](#) [70-](#)
[4853B](#) [71.350.2428.0](#) [733-134](#) [733-162](#) [760-3052](#) [MHR-64-VUAL](#) [80.063.4001.1](#) [800-90-001-10-001000](#) [801-43-002-10-013000](#)
[801-43-006-10-002000](#) [803-43-024-10-001000](#) [803-93-012-10-001000](#) [8-1437020-4](#) [819-22-004-30-001101](#) [820-22-006-30-001101](#)
[820-22-008-30-001101](#) [821-22-002-10-001101](#)