

»Features

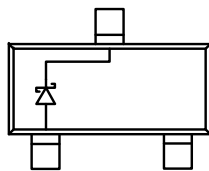
- Low forward voltage drop
- High current capability
- High reliability
- High surge current capability
- Epitaxial construction



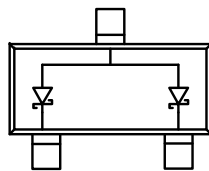
»General Description

- Case: molded plastic
- Polarity: Color band denotes cathode
- Package: SOT-23 Plastic Package

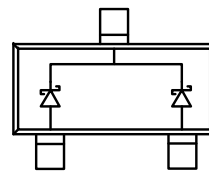
»Circuit and Marking



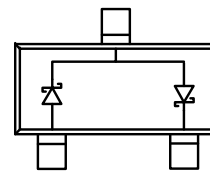
**BAS70: 73**



**BAS70-06:76**



**BAS70-05: 75**



**BAS70-04:74**

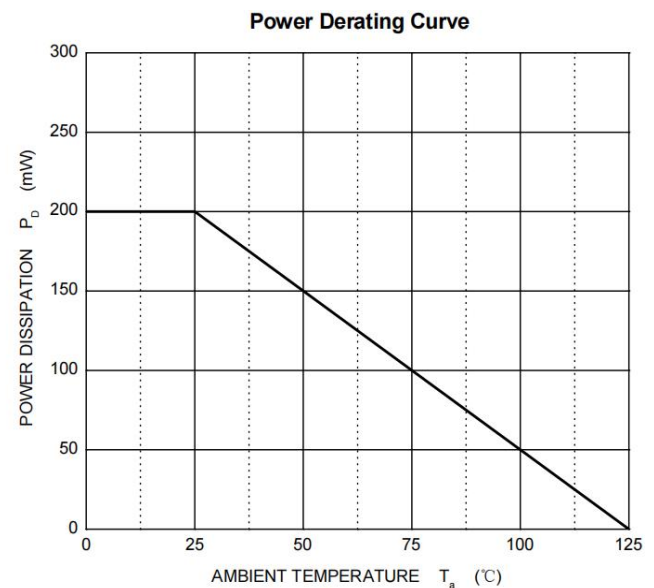
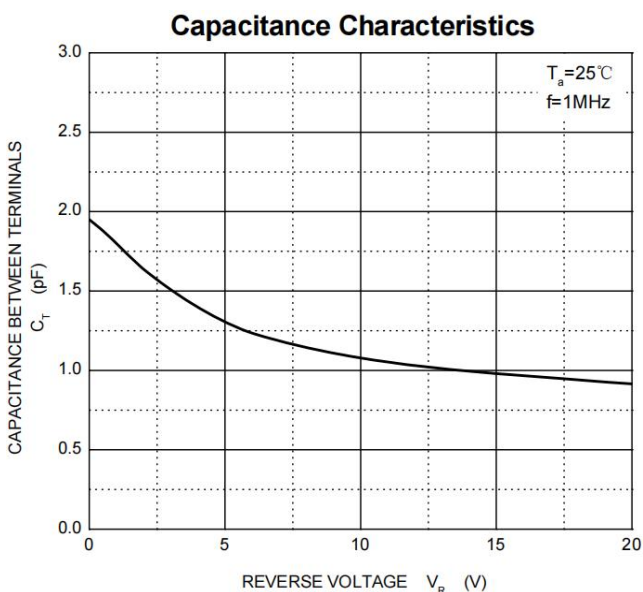
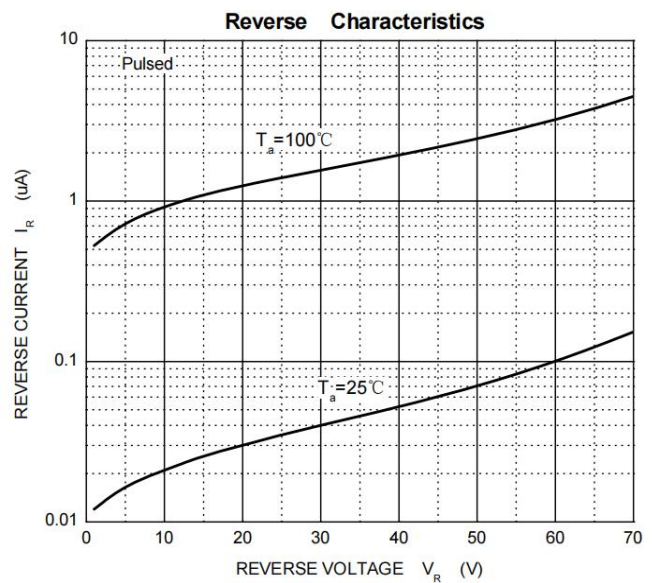
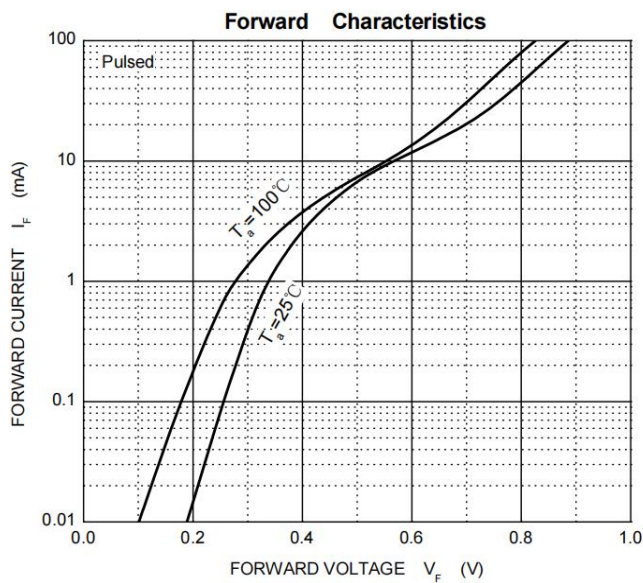
» Maximum Ratings @ $T_A=25^{\circ}\text{C}$  unless otherwise noted

Symbol	Parameter	Value	Unit
VRRM VRWM VR	Peak Repetitive Peak Reverse Voltage Working Peak Reverse Voltage DC Blocking Voltage	70	V
IFM	Forward Continuous Current	70	mA
IFSM	Non-repetitive Peak Forward Surge Current@8.3mS	100	mA
Pd	Power Dissipation	200	mW
RθJA	Thermal Resistance From Junction To Ambient	450	°C/W
TJ	Operation Junction Temperature Range	-40~+125	°C
TSTG	Storage Temperature Range	-55~+150	°C

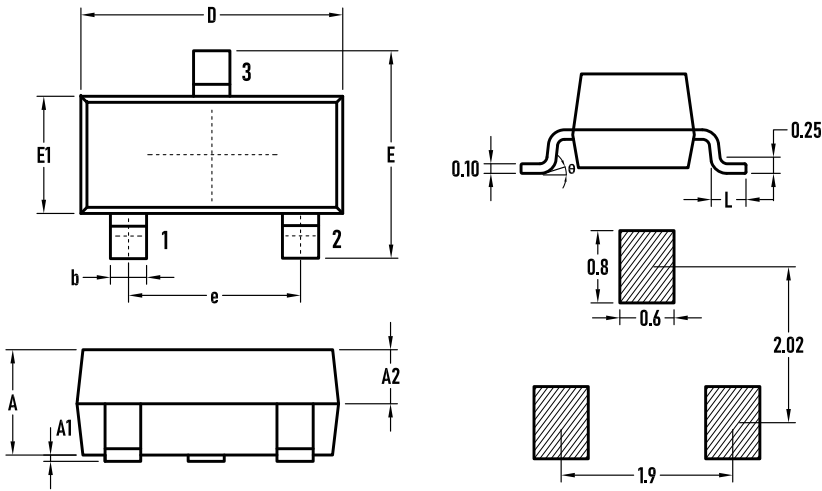
» **Electrical Characteristics** @ $T_A=25^\circ\text{C}$  unless otherwise noted

Symbol	Parameter	Test conditions	Min	Max	Unit
V(BR)	Reverse breakdown voltage	$I_R=10\mu\text{A}$	70		V
$I_R$	Reverse current	$V_R=50\text{V}$		100	nA
VF	Forward voltage	$I_F=1\text{mA}$		410	mV
		$I_F=15\text{mA}$		1000	mV
CD	Diode capacitance	$V_R=0\text{V}, f=1\text{MHz}$		2	pF
$t_{rr}$	Reverse recovery time	$I_F=I_R=10\text{mA}, I_{rr}=1\text{mA}, R_L=100\Omega$		5	nS

» **Typical Performance Characteristics** ( $T_J = 25^\circ\text{C}$ , unless otherwise noted)



»Package Information SOT-23



SYMBOL	MILLIMETER		
	MIN.	Typ	MAX
A	0.90	1.00	1.10
A1	0.02	0.06	0.10
A2	–	0.60	–
D	2.85	2.90	2.95
b	0.37	0.40	0.43
E	2.35	2.40	2.45
E1	1.25	1.30	1.35
e	1.85	1.90	1.95
L	0.35	0.40	0.48
θ	0	–	6°

»Ordering information

Order code	Package	Base qty	Delivery mode
BAS70/-04/-05/-06	SOT-23	3K	Tape and reel

## X-ON Electronics

Largest Supplier of Electrical and Electronic Components

*Click to view similar products for [Schottky Diodes & Rectifiers](#) category:*

*Click to view products by [Bourne](#) manufacturer:*

Other Similar products are found below :

[MA4E2039](#) [MMBD301M3T5G](#) [RB160M-50TR](#) [D83C](#) [BAS16E6433HTMA1](#) [BAS 3010S-02LRH E6327](#) [BAT 54-02LRH E6327](#)  
[NRVBAF360T3G](#) [NSR05F40QNXT5G](#) [NTE555](#) [JANS1N6640](#) [SS3003CH-TL-E](#) [GA01SHT18](#) [CRS10I30A\(TE85L,QM](#) [MBRA140TRPBF](#)  
[MBRB30H30CT-1G](#) [BAT 15-04R E6152](#) [JANTX1N5712-1](#) [DMJ3940-000](#) [SB007-03C-TB-E](#) [NRVBB20100CTT4G](#) [NRVBM120LT1G](#)  
[NTSB30U100CT-1G](#) [CRG04\(T5L,TEMQ\)](#) [ACDBA1100LR-HF](#) [ACDBA1200-HF](#) [ACDBA240-HF](#) [ACDBA3100-HF](#) [CDBQC0530L-HF](#)  
[ACDBA260LR-HF](#) [ACDBA1100-HF](#) [10BQ015-M3/5BT](#) [NRVBM120ET1G](#) [VSSB410S-M3/5BT](#) [1N5819T-G](#) [PDS1040Q-13](#) [B160BQ-13-F](#)  
[SDM05U20CSP-7](#) [BAS 70-07 E6433](#) [B140S1F-7](#) [HSM560Je3/TR13](#) [DDB2265-000](#) [ZHCS506QTA](#) [HSM190Je3/TR13](#) [B330AF-13](#)  
[ACDBUC0230-HF](#) [SDM1U100S1F-7](#) [MBR10200CTF-G1](#) [CDLL5712](#) [DMF2822-000](#)