

»Features

$V_{DS} = 20V$
 $I_D = 4A$
 $R_{DS(ON)} @V_{GS} = 4.5V, TYP = 22m\Omega$
 $R_{DS(ON)} @V_{GS} = 2.5V, TYP = 28m\Omega$

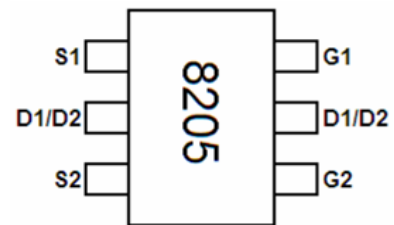
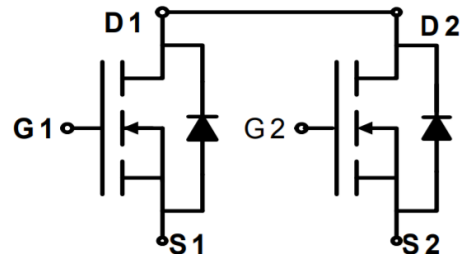
»General Description

- Very low on-resistance RDS(ON)
- High density cell design for ultra low Rdson
- Fully characterized avalanche voltage and current
- SOT23-6L for Surface Mount Package.

»APPLICATION

- Power switching application
- PWM applications
- Hard switched and high frequency circuits
- Uninterruptible power supply

»Pin Configurations



SOT23-6L

»Absolute Maximum Ratings @ $T_A=25^\circ C$ unless otherwise noted

parameter		symbol	limit	unit
Drain-source voltage		V_{DS}	20	V
Gate-source voltage		V_{GS}	± 12	V
Continuous drain current ($T_J = 150^\circ C$) ^a	$T_A = 25^\circ C$	I_D	4.0	A
	$T_A = 70^\circ C$		3.0	
Pulsed drain current ^b		I_{DM}	20	
Continuous source current (diode conduction) ^a		I_S	1.2	
Power dissipation ^a	$T_A = 25^\circ C$	P_D	1.4	W
	$T_A = 70^\circ C$		0.9	
Operating junction and storage temperature range		T_J, T_{stg}	-55—150	$^\circ C$

»THERMAL CHARACTERISTICS

Parameter	Symbol	Typ	Max	Unit	
Maximum junction-to-ambient ^a	≤ 10 s	R _{θJA}	70	90	°C/W
	Steady-State		100	125	
Maximum junction-to-foot	Steady-State	R _{θJC}	63	80	

Notes

- a. Surface mounted on 1" x 1" FR4 board
 b. Pulse width limited by maximum junction temperature

»N-Channel Electrical Characteristics @T_A=25°C unless otherwise noted

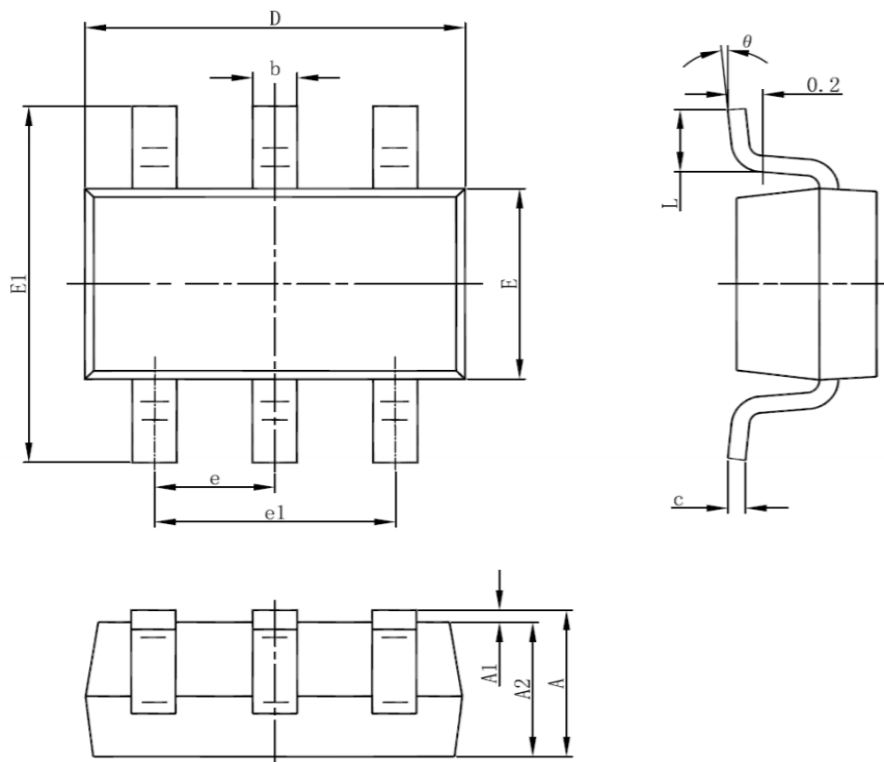
Parameter	Symbol	Condition	Min	Typ	Max	Unit
OFF Characteristics						
Drain-source breakdown voltage	BV _{DSS}	V _{GS} =0V, I _D =250μA	20	-	-	V
Zero gate voltage drain current	I _{DSS}	V _{DS} =20V, V _{GS} =0V	-	-	1	μA
Gate-body leakage	I _{GSS}	V _{DS} =0V, V _{GS} =±12V	-	-	±100	nA
ON Characteristics						
Gate threshold voltage	V _{GS(th)}	V _{DS} =V _{GS} , I _D =250μA	0.5	0.75	1.2	V
Drain-source on-state resistance ^a	R _{DS(ON)}	V _{GS} =4.5V, I _D =4.0A	-	22	26	mΩ
		V _{GS} =2.5V, I _D =3.0A	-	28	35	
Forward transconductance ^a	g _{fs}	V _{DS} =5V, I _D =4A	-	10	-	S
Dynamic Characteristics ^b						
Input capacitance	C _{ISS}	V _{DS} =10V, V _{GS} =0V f=1.0MHz	-	600	-	pF
Output capacitance	C _{OSS}		-	330	-	
Reverse transfer capacitance	C _{RSS}		-	140	-	
Switching Characteristics						
Turn-on delay time	t _{D(ON)}	V _{DD} =10V R _L =3 ohm V _{GEN} =4.5V R _{GEN} =6ohm	-	18	-	ns
Rise time	t _r		-	5	-	
Turn-off delay time	t _{D(OFF)}		-	43	-	
Fall time	t _f		-	20	-	
Total gate charge	Q _g	V _{DS} =10V I _D =4A V _{GS} =4.5V	-	11	-	nC
Gate-source charge	Q _{gs}		-	2.3	-	
Gate-drain charge	Q _{gd}		-	2.5	-	
DRAIN-SOURCE DIODE CHARACTERISTICS						
Diode forward voltage	V _{SD}	V _{GS} =0V, I _S =2A	-	0.76	1.16	V

Notes

- a. Pulse test: Pulse width ≤ 300 μs, duty cycle ≤ 2 %
 b. Guaranteed by design, not subject to production testing

»Package Information

SOT23-6L



Symbol	Dimensions In Millimeters		Dimensions In Inches	
	Min	Max	Min	Max
A	1.050	1.250	0.041	0.049
A1	0.000	0.100	0.000	0.004
A2	1.050	1.150	0.041	0.045
b	0.300	0.500	0.012	0.020
c	0.100	0.200	0.004	0.008
D	2.820	3.020	0.111	0.119
E	1.500	1.700	0.059	0.067
E1	2.650	2.950	0.104	0.116
e	0.950(BSC)		0.037(BSC)	
e1	1.800	2.000	0.071	0.079
L	0.300	0.600	0.012	0.024
θ	0°	8°	0°	8°

»Ordering information

Order code	Package	Marking	Base qty	Delivery mode
BM8205	SOT23-6L	8205	3K	Tape and reel

X-ON Electronics

Largest Supplier of Electrical and Electronic Components

Click to view similar products for [MOSFET](#) category:

Click to view products by [Bourne](#) manufacturer:

Other Similar products are found below :

[IRFD120](#) [JANTX2N5237](#) [BUK455-60A/B](#) [MIC4420CM-TR](#) [VN1206L](#) [NDP4060](#) [SI4482DY](#) [IPS70R2K0CEAKMA1](#) [SQD23N06-31L-GE3](#)
[TK16J60W,S1VQ\(O](#) [2SK2614\(TE16L1,Q\)](#) [DMN1017UCP3-7](#) [DMN1053UCP4-7](#) [SQJ469EP-T1-GE3](#) [NTE2384](#) [DMC2700UDMQ-7](#)
[DMN2080UCB4-7](#) [DMN61D9UWQ-13](#) [US6M2GTR](#) [DMN31D5UDJ-7](#) [DMP22D4UFO-7B](#) [DMN1006UCA6-7](#) [DMN16M9UCA6-7](#)
[STF5N65M6](#) [IRF40H233XTMA1](#) [STU5N65M6](#) [DMN6022SSD-13](#) [DMN13M9UCA6-7](#) [DMTH10H4M6SPS-13](#) [DMN2990UFB-7B](#)
[IPB80P04P405ATMA2](#) [2N7002W-G](#) [MCAC30N06Y-TP](#) [MCQ7328-TP](#) [BXP7N65D](#) [BXP4N65F](#) [AOL1454G](#) [WMJ80N60C4](#) [BXP2N20L](#)
[BXP2N65D](#) [BXT1150N10J](#) [BXT1700P06M](#) [TSM60NB380CP](#) [ROG](#) [RQ7L055BGTCR](#) [DMNH15H110SK3-13](#) [SLF10N65ABV2](#)
[BSO203SP](#) [BSO211P](#) [IPA60R230P6](#) [IPA60R460CE](#)