

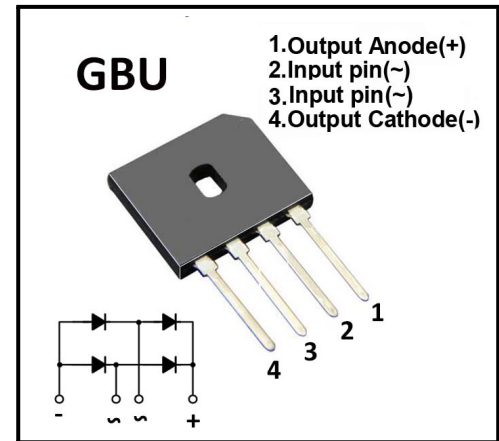
GBU4005-GBU410/G

Single Phase 4.0Amp Glass passivated Bridge Rectifiers

Features

- The plastic package carries Underwriters Laboratory Flammability Classification 94V-0
- Idea for printed circuit board
- Glass passivated Junction chip
- Low reverse leakage
- High forward surge current capability
- High temperature soldering guaranteed 250°C/10 seconds at terminals
- The G suffix is uses for photoresist chip, otherwise it is a knife scraping chip

Mechanical Data



MECHANICAL DATA

- Case: Molded plastic body
- Terminals: Solder plated, solderable per MIL-STD-750, Method 2026
- Polarity: Polarity symbol marking on body
- Mounting Position: Any

Maximum Ratings And Electrical Characteristics (@T_A=25°C unless otherwise noted)

Symbol	Parameter	GBU 4005	GBU 401	GBU 402	GBU 404	GBU 406	GBU 408	GBU 410	Unit
V _{RRM}	repetitive peak reverse voltage	50	100	200	400	600	800	1000	V
V _{RMS}	RMS voltage	35	70	140	280	420	560	700	V
V _{DC}	DC blocking voltage	50	100	200	400	600	800	1000	V
I _{AV}	Maximum average forward rectified current with heatsink	4.0							A
I _{FSM}	Peak forward surge current, 8.3ms single half sine-wave	120.0							A
I _t ²	I _t ² Rating for fusing (t=8.3ms, T _A =25°C)	59.76							A ² _S
V _F	Forward Voltage at 4.0A	1.10							V
I _R	Peak Reverse Current@T _A =25°C at rated DC blocking voltage@ T _A =125°C	5.0 500							uA
C _J	Typical junction capacitance(Note1)	65							pF
R _{qJA}	Typical thermal resistance	31							°C/W
T _J	Operation Temperature Range	-55 to +150							°C
T _{STG}	Storage Temperature Range	-55 to +150							

Note:(1)Measured at 1MHz and applied reverse voltage of 4.0V D.C.
 (2)Mounted on glass epoxy PC board with 1.3mm² solder pad.
 (3) Device mounted on 50mm x 50mm x 1.6mm Cu Plate Heatsink.





GBU4005-GBU410/G

Single Phase 4.0Amp Glass passivated Bridge Rectifiers

Ratings And Characteristic Curves

Figure 1: DERATING CURVE OUTPUT RECTIFIED CURRENT

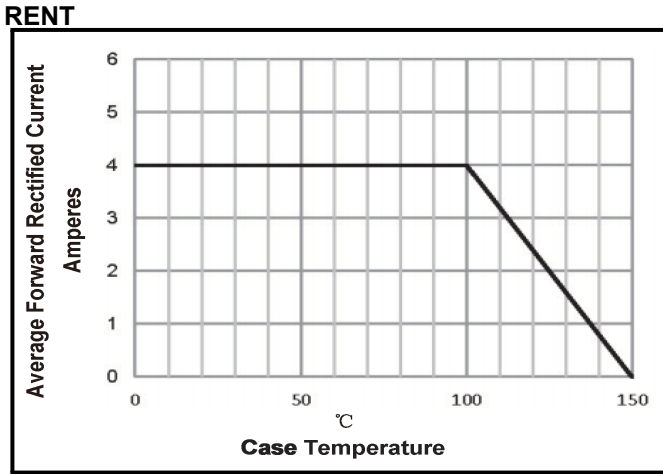


Figure 2: MAXIMUM NON-REPETITIVE PEAK FORWARD SURGE CURRENT PER LEG

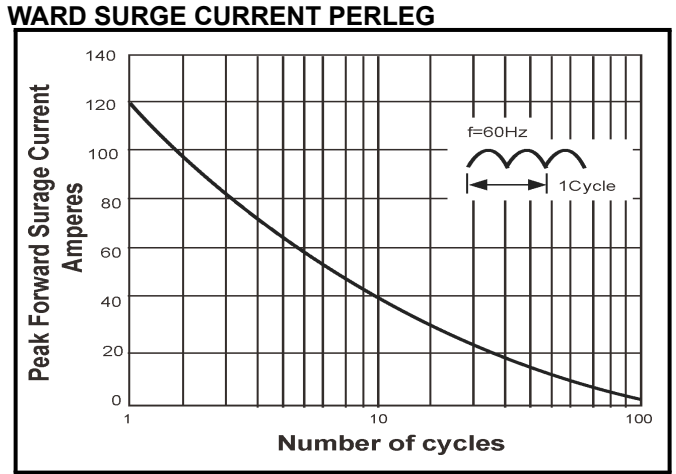


Figure 3: TYPICAL FORWARD VOLTAGE CHARACTERISTICS

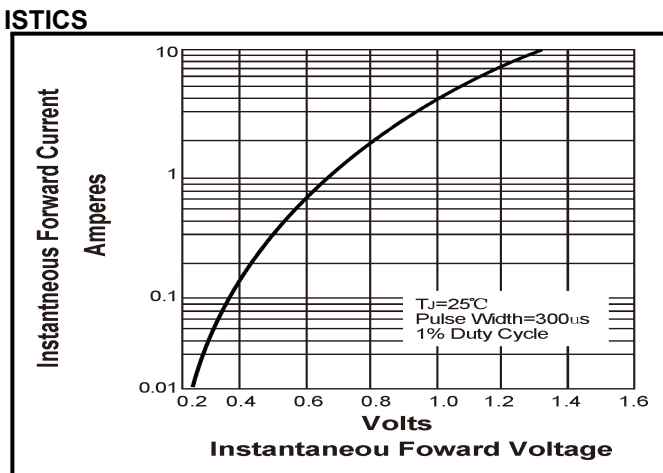
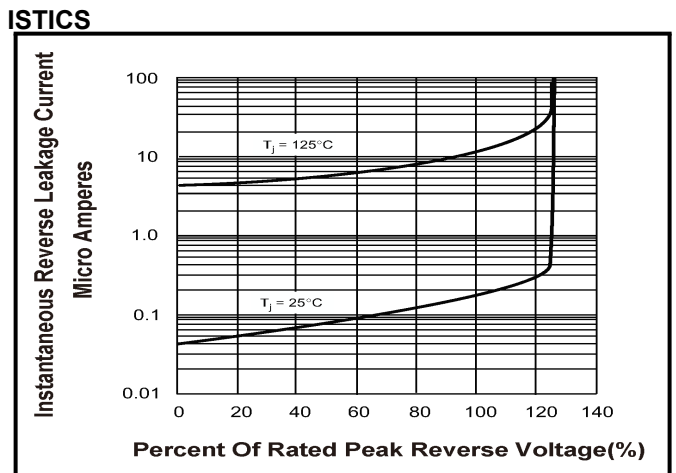


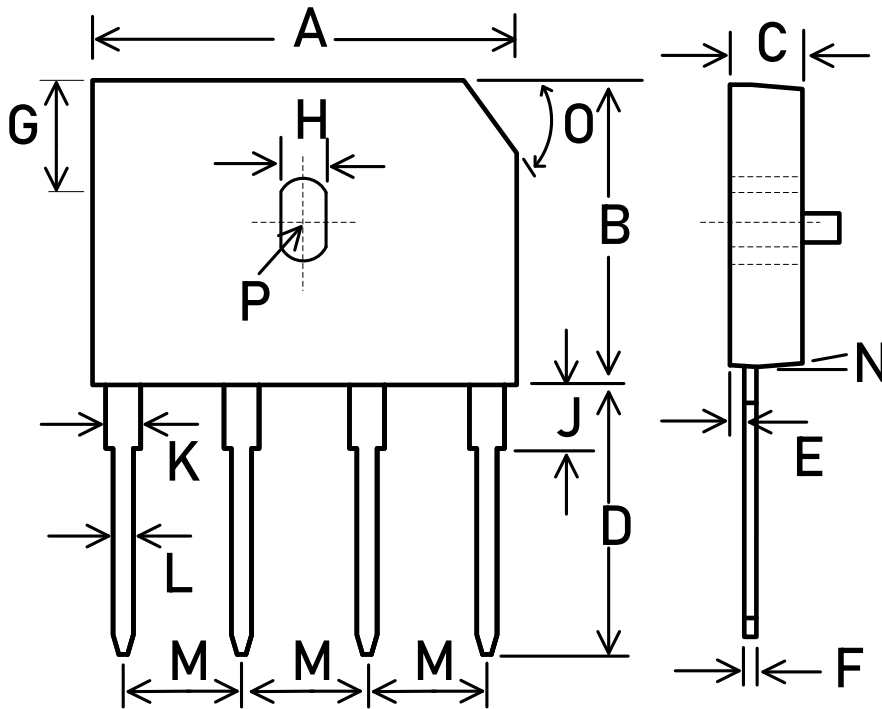
Figure 4: TYPICAL REVERSE LEAKAGE CHARACTERISTICS



GBU4005-GBU410/G

Single Phase 4.0Amp Glass passivated Bridge Rectifiers

Outline Drawing -GBU



SYMBOL	MILLIMETER	
	MIN.	MAX.
A	21.80	22.30
B	18.30	18.80
C	3.30	3.60
D	17.50	18.00
E	0.76	1.00
F	0.45	0.55
G	7.40	7.90
H	3.50	4.10
I	1.65	2.16
J	2.25	2.75
K	2.00	2.40
L	1.00	1.30
M	4.83	5.33
N	7.0° TYP.	
O	(3.2)x45°	
P	1.90PADIUS	



X-ON Electronics

Largest Supplier of Electrical and Electronic Components

Click to view similar products for [Bridge Rectifiers](#) category:

Click to view products by [Bourne](#) manufacturer:

Other Similar products are found below :

[MB2510](#) [MB252](#) [MB356G](#) [MB358G](#) [GBJ1504-BP](#) [GBU10B-BP](#) [GBU15K-BP](#) [GBU4A-BP](#) [GBU4D-BP](#) [GBU6B-E3/45](#) [DB101-BP](#) [DF01](#)
[DF10SA-E345](#) [BU1508-E3/45](#) [BU1510-E3/45](#) [KBPC50-10S](#) [RS405GL-BP](#) [GBJ1502-BP](#) [GBU6M](#) [GSIB1520-E3/45](#) [36MB140A](#) [TB102M](#)
[MB1510](#) [MB86](#) [TL401G](#) [MDA920A2](#) [TU602](#) [TU810](#) [MP5010W-BP](#) [MP501W-BP](#) [MP502-BP](#) [BR84DTP204](#) [BU1508-E3/51](#) [KBPC25-02](#)
[VS-110MT120KPBF](#) [VS-2KBB60](#) [VS-60MT120KPBF](#) [VS-60MT80KPBF](#) [DB105-BP](#) [DF1510S](#) [VS-40MT160PAPBF](#) [VISKBU8K-E4/51](#)
[36MT100](#) [GBU4G-BP](#) [GBU6B-E3/51](#) [DF15005S-E3/77](#) [GSIB15A80-E3/45](#) [DB104-BP](#) [D3SB60](#) [TB354](#)