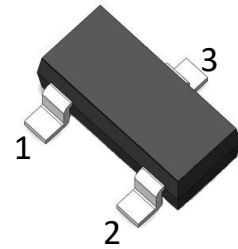


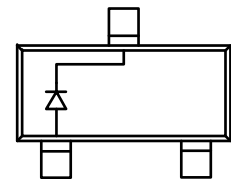
»Features

- Fast Switching Speed
- For General Purpose Switching Applications
- High Conductance



»General Description

- SOT-23 Small Outline Plastic Package
- Mounting Position: Any



»Absolute Maximum Ratings @ $T_A=25^{\circ}\text{C}$  unless otherwise noted

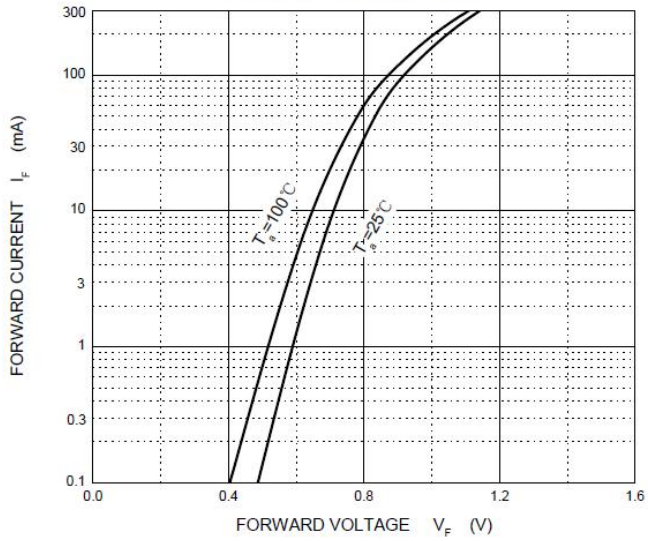
Symbol	Parameter	Value	Unit
$V_{RM}$	Non-Repetitive Peak Reverse Voltage	100	V
$V_{RRM}$	Peak Repetitive Peak Reverse Voltage	75	V
$V_{RWM}$	Working Peak Reverse Voltage		
$V_R$	DC Blocking Voltage		
$V_{R(RMS)}$	RMS Reverse Voltage	53	V
$I_{FM}$	Forward Continuous Current	300	mA
$I_o$	Average Rectified Output Current	150	mA
$I_{FSM}$	Non-repetitive Peak Forward Surge Current@8.3mS	2.0	A
$P_d$	Power Dissipation	350	mW
$R_{\theta JA}$	Thermal Resistance From Junction To Ambient	350	$^{\circ}\text{C}/\text{W}$
$T_J$	Operation Junction Temperature Range	-55~+150	$^{\circ}\text{C}$
$T_{STG}$	Storage Temperature Range	-55~+150	$^{\circ}\text{C}$

»Electrical Characteristics @ $T_A=25^{\circ}\text{C}$  unless otherwise noted

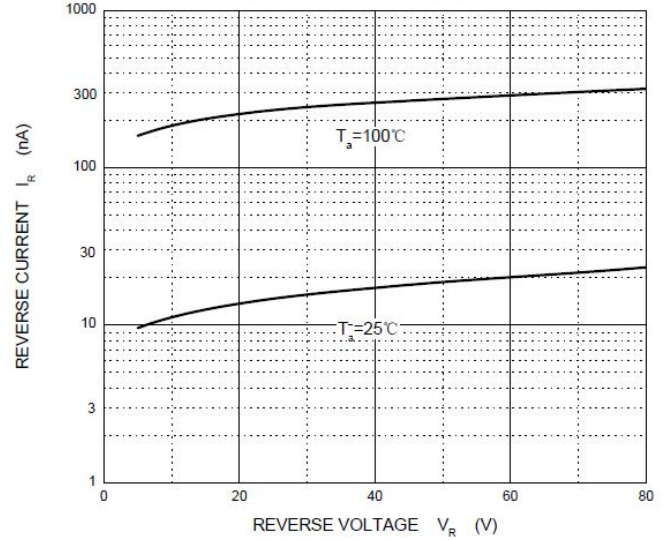
Symbol	Parameter	Test conditions	Min	Max	Unit
$V_{(BR)}$	Reverse breakdown voltage	$I_R=100\mu\text{A}$	75		V
$I_R$	Reverse current	$V_R=75\text{V}$		2.5	$\mu\text{A}$
		$V_R=20\text{V}$		25	nA
$V_{F1}$	Forward voltage	$I_F=1\text{mA}$		0.715	V
$V_{F2}$		$I_F=10\text{mA}$		0.855	V
$V_{F3}$		$I_F=50\text{mA}$		1.0	V
$V_{F4}$		$I_F=150\text{mA}$		1.25	V
$C_T$	Capacitance between terminals	$V_R=0\text{V}, f=1\text{MHz}$		2	pF
$t_{rr}$	Reverse recovery time	$I_F=I_R=10\text{mA}, I_{rr}=0.1X I_R, R_L=100\Omega$		4	nS

»Typical Performance Characteristics (T<sub>J</sub> = 25 °C, unless otherwise noted)

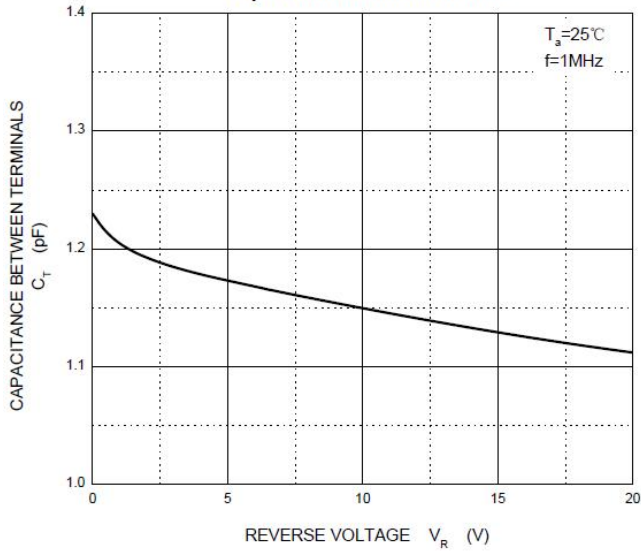
**Forward Characteristics**



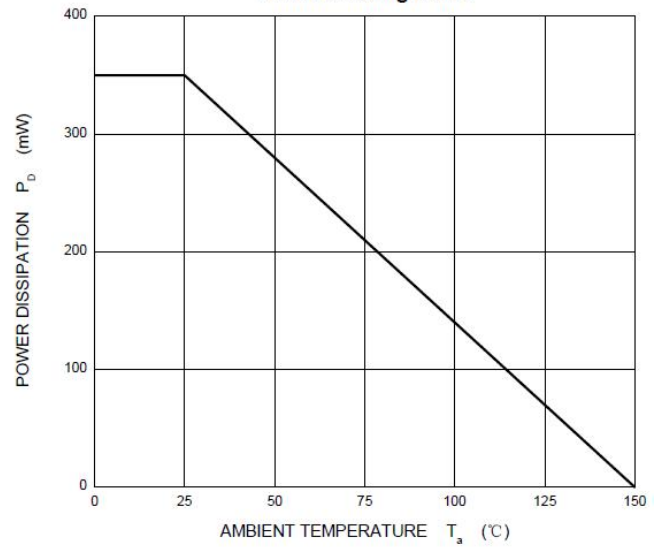
**Reverse Characteristics**



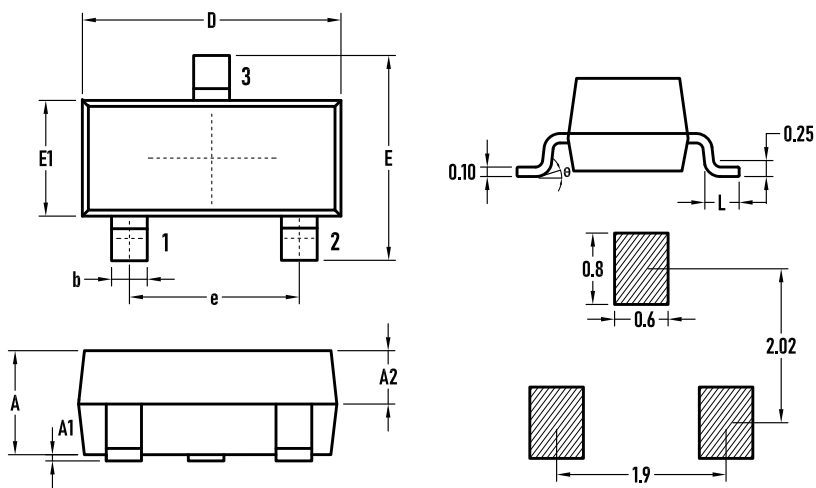
**Capacitance Characteristics**



**Power Derating Curve**

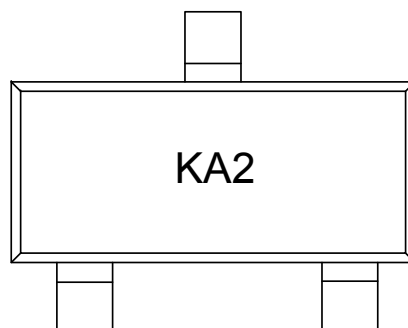


»Package Information-SOT23



SYMBOL	MILLIMETER		
	MIN.	Typ.	MAX.
A	0.90	1.00	1.10
A1	0.02	0.06	0.10
A2	–	0.60	–
D	2.85	2.90	2.95
b	0.37	0.40	0.43
E	2.35	2.40	2.45
E1	1.25	1.30	1.35
e	1.85	1.90	1.95
L	0.35	0.40	0.48
$\theta$	0	–	6°

»Marking



»Ordering information

Order code	Package	Base qty	Delivery mode
MMBD4148	SOT-23	3K	Tape and reel

## X-ON Electronics

Largest Supplier of Electrical and Electronic Components

*Click to view similar products for* [Diodes - General Purpose, Power, Switching category:](#)

*Click to view products by* [Bourne manufacturer:](#)

Other Similar products are found below :

[MCL4151-TR3](#) [MMBD3004S-13-F](#) [RD0306T-H](#) [1N3611](#) [NTE156A](#) [NTE574](#) [NTE6244](#) [1SS193,LF](#) [1SS400CST2RA](#) [SDAA13](#)  
[SHN2D02FUTW1T1G](#) [LS4151GS08](#) [1N4449](#) [1N456A](#) [1N4934-E3/73](#) [1N914BTR](#) [RFUH20TB3S](#) [D291S45T](#) [BAV300-TR](#) [BAW56DWQ-](#)  
[7-F](#) [BAW56M3T5G](#) [BAW75-TAP](#) [MM230L-CAA](#) [IDW40E65D1](#) [JAN1N3600](#) [JAN1N4454UR-1](#) [LL4151-GS18](#) [SMMSD4148T3G](#)  
[BYW95B/A52A](#) [NSVDAN222T1G](#) [CDSZC01100-HF](#) [LL4150-M-08](#) [1N4454-TR](#) [BAV70HDW-7](#) [BAS28-7](#) [JANTX1N6640](#) [BAW56HDW-](#)  
[13](#) [BAS28 TR](#) [VS-HFA04SD60STR-M3](#) [NSVM1MA152WKT1G](#) [1SS388-TP](#) [RGP30D-E3/73](#) [VS-8EWF02S-M3](#) [BAV99TQ-13-F](#)  
[BAV99HDW-13](#) [MMDB30-E28X](#) [IDP20C65D2XKSA1](#) [LS4148](#) [IDV15E65D2](#) [NSVM1MA152WAT1G](#)