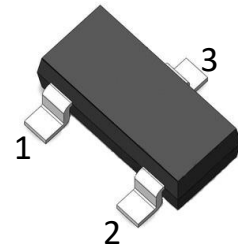


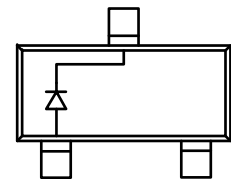
»Features

- Fast Switching Speed
- For General Purpose Switching Applications
- High Conductance



»General Description

- SOT-23 Small Outline Plastic Package
- Mounting Position: Any



»Absolute Maximum Ratings @T_A=25°C unless otherwise noted

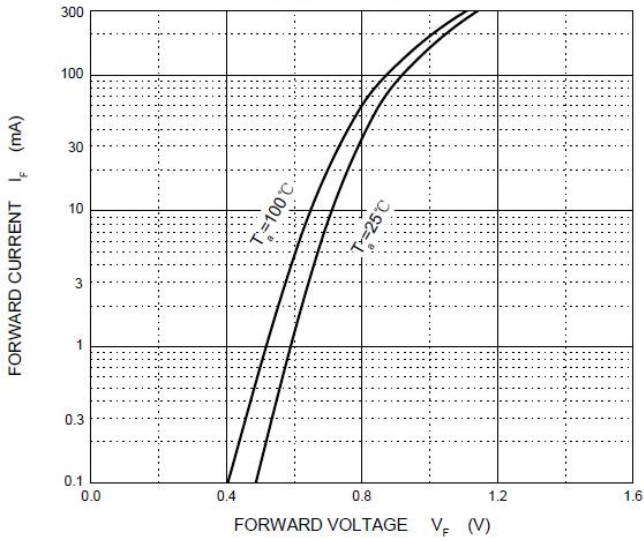
Symbol	Parameter	Value	Unit
V _{RM}	Non-Repetitive Peak Reverse Voltage	100	V
V _R RM	Peak Repetitive Peak Reverse Voltage	75	V
V _R WM	Working Peak Reverse Voltage		
V _R	DC Blocking Voltage		
V _{R(RMS)}	RMS Reverse Voltage	53	V
I _{FM}	Forward Continuous Current	300	mA
I _O	Average Rectified Output Current	150	mA
I _{FSM}	Non-repetitive Peak Forward Surge Current@8.3mS	2.0	A
P _d	Power Dissipation	350	mW
R _{θJA}	Thermal Resistance From Junction To Ambient	350	°C/W
T _J	Operation Junction Temperature Range	-55~+150	°C
T _{STG}	Storage Temperature Range	-55~+150	°C

»Electrical Characteristics @T_A=25°C unless otherwise noted

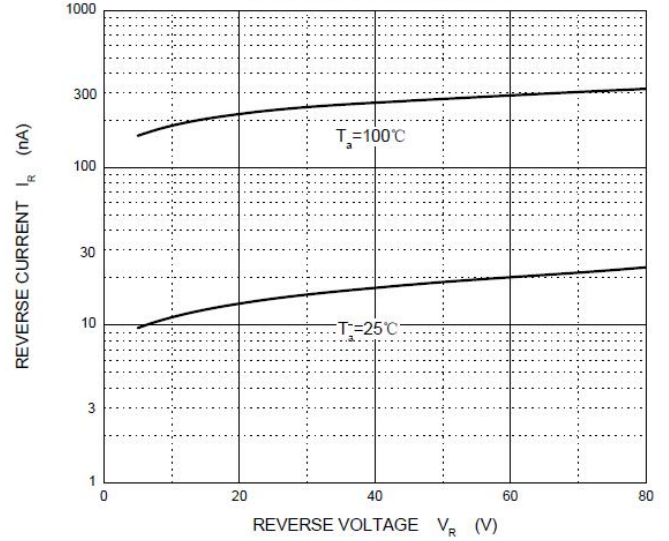
Symbol	Parameter	Test conditions	Min	Max	Unit
V _(BR)	Reverse breakdown voltage	I _R =100μA	75		V
I _R	Reverse current	V _R =75V		2.5	μA
		V _R =20V		25	nA
V _{F1}	Forward voltage	I _F =1mA		0.715	V
V _{F2}		I _F =10mA		0.855	V
V _{F3}		I _F =50mA		1.0	V
V _{F4}		I _F =150mA		1.25	V
C _T	Capacitance between terminals	V _R =0V, f=1MHz		2	pF
t _{rr}	Reverse recovery time	I _F =I _R =10mA, I _{rr} =0.1X I _R , R _L =100Ω		4	nS

»Typical Performance Characteristics (T_J = 25 °C, unless otherwise noted)

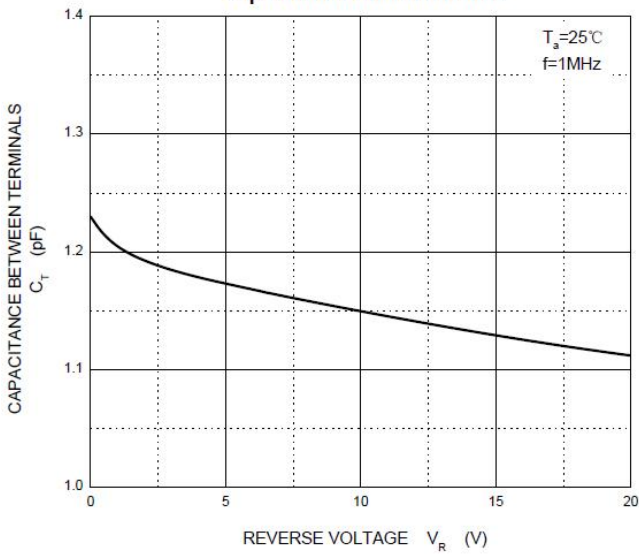
Forward Characteristics



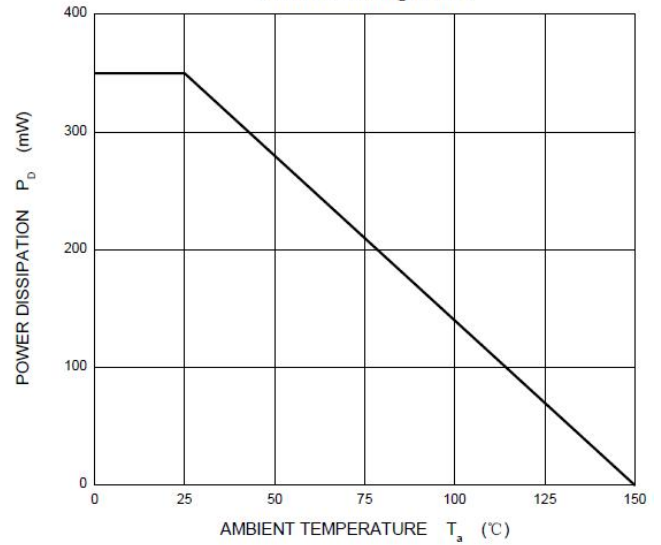
Reverse Characteristics



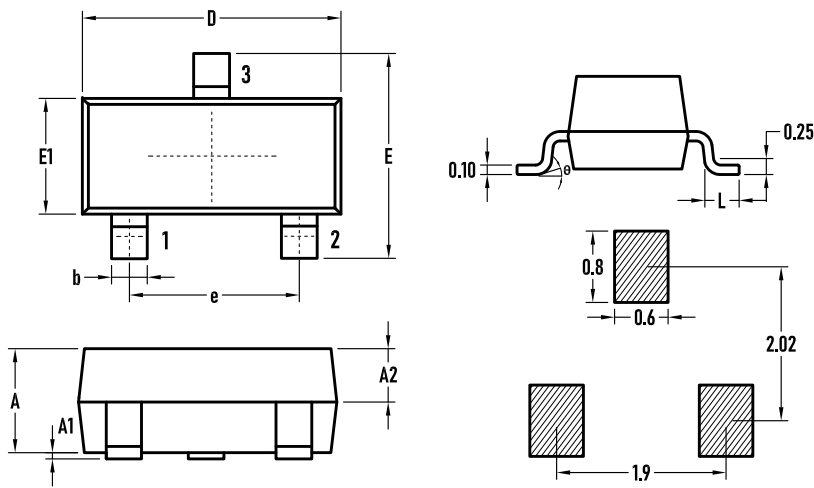
Capacitance Characteristics



Power Derating Curve

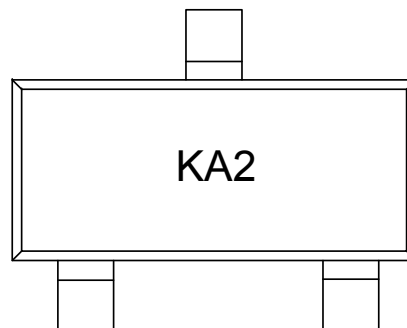


»Package Information-SOT23



SYMBOL	MILLIMETER		
	MIN.	Typ.	MAX.
A	0.90	1.00	1.10
A1	0.02	0.06	0.10
A2	–	0.60	–
D	2.85	2.90	2.95
b	0.37	0.40	0.43
E	2.35	2.40	2.45
E1	1.25	1.30	1.35
e	1.85	1.90	1.95
L	0.35	0.40	0.48
θ	0	–	6°

»Marking



»Ordering information

Order code	Package	Base qty	Delivery mode
MMBD4148	SOT-23	3K	Tape and reel

X-ON Electronics

Largest Supplier of Electrical and Electronic Components

Click to view similar products for [Diodes - General Purpose, Power, Switching category:](#)

Click to view products by [Bourne manufacturer:](#)

Other Similar products are found below :

[MCL4151-TR3](#) [MMBD3004S-13-F](#) [RD0306T-H](#) [1N3611](#) [NTE156A](#) [NTE574](#) [NTE6244](#) [1SS193,LF](#) [1SS400CST2RA](#) [SDAA13](#)
[SHN2D02FUTW1T1G](#) [LS4151GS08](#) [1N4449](#) [1N456A](#) [1N4934-E3/73](#) [1N914BTR](#) [D291S45T](#) [BAV300-TR](#) [BAW56DWQ-7-F](#) [BAW75-](#)
[TAP](#) [MM230L-CAA](#) [IDW40E65D1](#) [JAN1N3600](#) [JAN1N4454UR-1](#) [LL4151-GS18](#) [SMMSD4148T3G](#) [BYW95B/A52A](#) [NSVDAN222T1G](#)
[CDSZC01100-HF](#) [LL4150-M-08](#) [1N4454-TR](#) [BAV70HDW-7](#) [BAS28-7](#) [JANTX1N6640](#) [BAW56HDW-13](#) [BAS28 TR](#) [VS-](#)
[HFA04SD60STR-M3](#) [NSVM1MA152WKT1G](#) [1SS388-TP](#) [RGP30D-E3/73](#) [VS-8EWF02S-M3](#) [BAV99TQ-13-F](#) [BAV99HDW-13](#)
[MMDB30-E28X](#) [IDP20C65D2XKSA1](#) [LS4148](#) [IDV15E65D2](#) [NSVM1MA152WAT1G](#) [HN4D02JU\(TE85L,F\)](#) [MMD820-C12](#)