

»Features

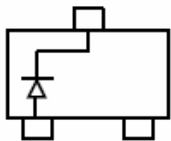
- Fast Switching Speed
- For General Purpose Switching Applications
- High Conductance



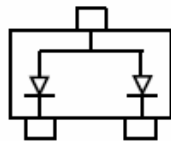
SOT-23

»General Description

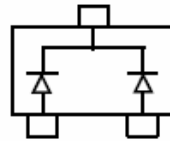
- SOT-23 Small Outline Plastic Package
- Mounting Position: Any



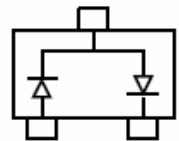
MMBD4148A:5H



MMBD4148CA :D6



MMBD4148CC :D5



MMBD4148SE : D 4

»Absolute Maximum Ratings @ $T_A=25^{\circ}\text{C}$ unless otherwise noted

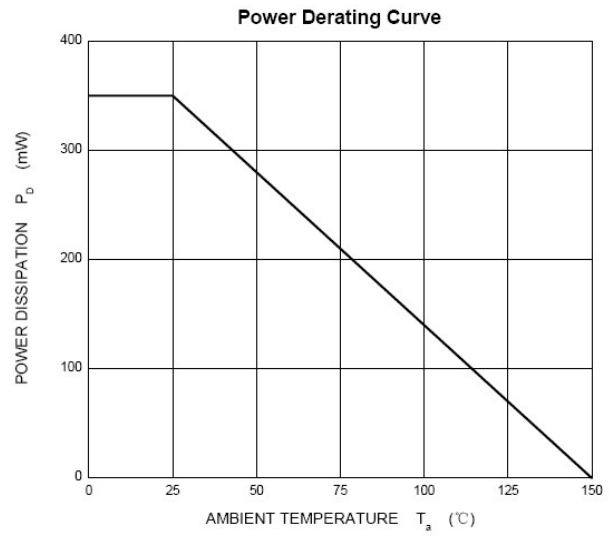
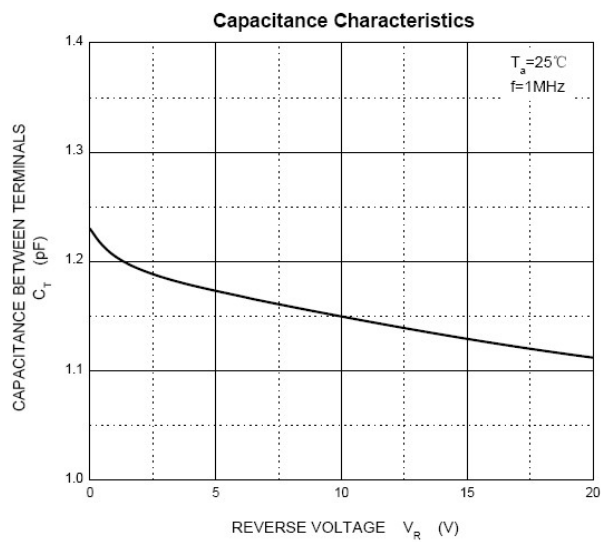
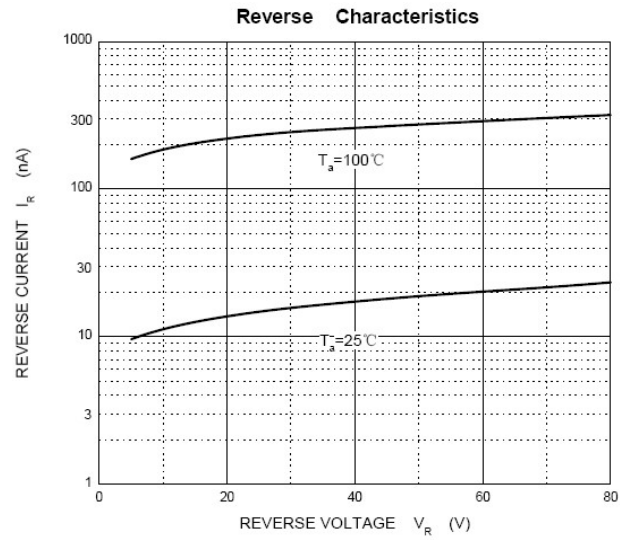
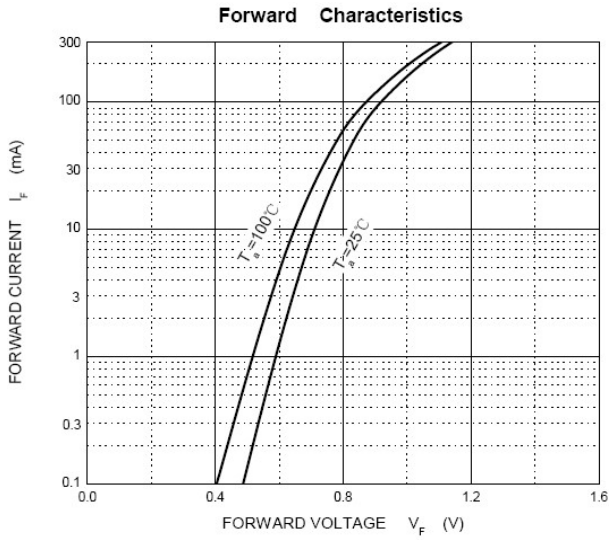
Parameters	Symbol	Value	Unit
Reverse Voltage	V_R	75	V
Peak Repetitive Reverse Voltage	V_{RRM}	100	V
Power Dissipation	P_d	350	mW
Average Rectified Current	I_o	200	mA
Non-Repetitive Peak Forward Surge Current @ $t=8.3\text{ms}$; $T_A=25^{\circ}\text{C}$	I_{FSM}	2.0	A
Operating junction temperature	T_j	150	$^{\circ}\text{C}$
Storage temperature range	T_s	-55-+150	$^{\circ}\text{C}$
Thermal Resistance from Junction to Ambient	$R_{\theta JA}$	357	$^{\circ}\text{C}/\text{W}$

Valid provided that electrodes are kept at ambient temperature.

»Electrical Characteristics @ $T_A=25^{\circ}\text{C}$ unless otherwise noted

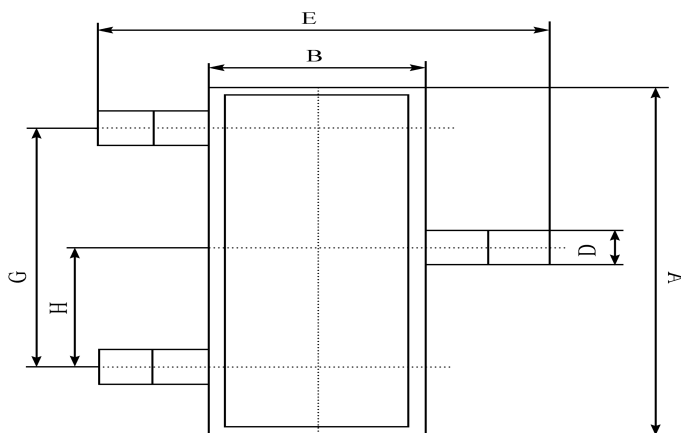
Symbols	Parameter	Test Condition	Limits		Unit
			Min	Max	
V(BR)	Reverse Voltage	$I_R=100\mu\text{A}$	75		V
I_R	Reverse Leakage Current	$V_R=75\text{V}$	---	5.0	μA
		$V_R=25\text{V}$	---	25	nA
V_F	Forward Voltage	$I_F=10\text{mA}$	---	1.00	V
T_{RR}	Reverse Recovery Time	$I_F= I_R=10\text{mA}$	---	4	nS
		$V_R=6\text{V}, R_L=100\Omega$			
		$I_{RR}=0.1 \times I_R$			
CT	Capacitance	$V_R=0\text{V}, f=1\text{MHz}$	---	4	pF

»Typical Performance Characteristics (T_J = 25 °C, unless otherwise noted)

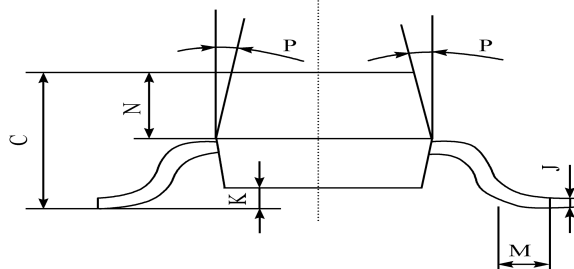


»Package Information

SOT-23



A	2.90 ± 0.10
B	1.30 ± 0.10
C	1.00 ± 0.10
D	0.40 ± 0.10
E	2.40 ± 0.20
G	1.90 ± 0.10
H	0.95 ± 0.05
J	0.13 ± 0.05
K	0.00-0.10
M	≥ 0.2
N	0.60 ± 0.10
P	7 ± 2°



»Ordering information

Order code	Package	Marking	Base qty	Delivery mode
MMBD4148A	SOT-23	5H	3K	Tape and reel
MMBD4148CA	SOT-23	D6	3K	Tape and reel
MMBD4148CC	SOT-23	D5	3K	Tape and reel
MMBD4148SE	SOT-23	D4	3K	Tape and reel

X-ON Electronics

Largest Supplier of Electrical and Electronic Components

Click to view similar products for [Diodes - General Purpose, Power, Switching category:](#)

Click to view products by [Bourne manufacturer:](#)

Other Similar products are found below :

[MCL4151-TR3](#) [MMBD3004S-13-F](#) [RD0306T-H](#) [1N3611](#) [NTE156A](#) [NTE574](#) [NTE6244](#) [1SS193,LF](#) [1SS400CST2RA](#) [SDAA13](#)
[SHN2D02FUTW1T1G](#) [LS4151GS08](#) [1N4449](#) [1N456A](#) [1N4934-E3/73](#) [1N914BTR](#) [RFUH20TB3S](#) [D291S45T](#) [BAV300-TR](#) [BAW56DWQ-](#)
[7-F](#) [BAW56M3T5G](#) [BAW75-TAP](#) [MM230L-CAA](#) [IDW40E65D1](#) [JAN1N3600](#) [JAN1N4454UR-1](#) [LL4151-GS18](#) [SMMSD4148T3G](#)
[BYW95B/A52A](#) [NSVDAN222T1G](#) [CDSZC01100-HF](#) [LL4150-M-08](#) [1N4454-TR](#) [BAV70HDW-7](#) [BAS28-7](#) [JANTX1N6640](#) [BAW56HDW-](#)
[13](#) [BAS28 TR](#) [VS-HFA04SD60STR-M3](#) [NSVM1MA152WKT1G](#) [1SS388-TP](#) [RGP30D-E3/73](#) [VS-8EWF02S-M3](#) [BAV99TQ-13-F](#)
[BAV99HDW-13](#) [MMDB30-E28X](#) [IDP20C65D2XKSA1](#) [LS4148](#) [IDV15E65D2](#) [NSVM1MA152WAT1G](#)