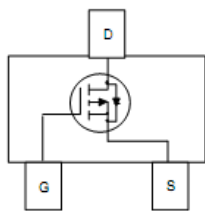
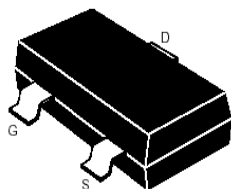


SOT-23

Features

- Advanced trench process technology
- High Density Cell Design For Ultra Low On-Resistance

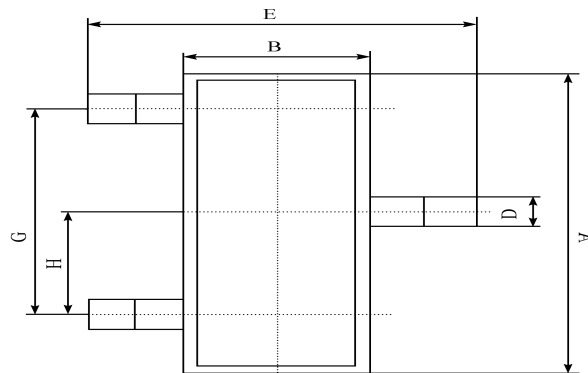
MAXIMUM RANTINGS

Characteristic	Symbol	Max	Unit
Drain-Source Voltage	BV_{DSS}	-12	V
Gate- Source Voltage	V_{GS}	± 8	V
Drain Current (continuous)	I_D	-5.1	A
Drain Current (pulsed)	I_{DM}	-20	A
Total Device Dissipation $T_A=25^\circ C$	P_D	1250	mW
Junction	T_J	150	$^\circ C$
Storage Temperature	T_{stg}	-55to+150	$^\circ C$

Electrical Characteristics

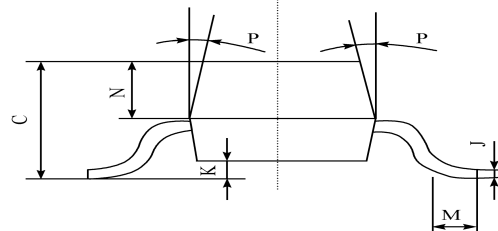
Characteristic	Symbol	Min	Typ	Max	Unit
Drain-Source Breakdown Voltage ($I_D = -250\mu A, V_{GS}=0V$)	BV_{DSS}	-12	—	—	V
Gate Threshold Voltage ($I_D = -250\mu A, V_{GS}=V_{DS}$)	$V_{GS(th)}$	-0.4	—	-1	V
Diode Forward Voltage Drop ($I_S = -1 A, V_{GS}=0V$)	V_{SD}	—	—	-1.2	V
Zero Gate Voltage Drain Current ($V_{GS}=0V, V_{DS}= -12V$)	I_{DSS}	—	—	-1	μA
Gate Body Leakage ($V_{GS}=\pm 8V, V_{DS}=0V$)	I_{GSS}	—	—	± 100	nA
Static Drain-Source On-State Resistance ($I_D = -5.1A, V_{GS}= -4.5V$)	$R_{DS(ON)}$	—	28	35	$m\Omega$
Static Drain-Source On-State Resistance ($I_D = -4.5A, V_{GS}= -2.5V$)	$R_{DS(ON)}$	—	38	45	$m\Omega$
Static Drain-Source On-State Resistance ($I_D = -2 A, V_{GS}= -1.8V$)	$R_{DS(ON)}$	—	50	59	$m\Omega$
Input Capacitance ($V_{GS}=0V, V_{DS}= -10V, f=1MHz$)	C_{ISS}	—	920	—	pF
Output Capacitance ($V_{GS}=0V, V_{DS}= -10V, f=1MHz$)	C_{OSS}	—	220	—	pF
Turn-ON Time ($V_{DS}= -10V, I_D = -2A, R_{GEN}=6\Omega$)	$t_{(on)}$	—	8	—	ns
Turn-OFF Time ($V_{DS}= -10V, I_D = -2A, R_{GEN}=6\Omega$)	$t_{(off)}$	—	60	—	ns

SOT-23 PACKAGE OUTLINE Plastic surface mounted package



SOT-23	
A	2.90 ± 0.10
B	1.30 ± 0.10
C	1.00 ± 0.10
D	0.40 ± 0.10
E	2.40 ± 0.20
G	1.90 ± 0.10
H	0.95 ± 0.05
J	0.13 ± 0.05
K	0.00 - 0.10
M	≥ 0.2
N	0.60 ± 0.10
P	7 ± 2°

(UNIT): mm



X-ON Electronics

Largest Supplier of Electrical and Electronic Components

Click to view similar products for [MOSFET](#) category:

Click to view products by [Bourne](#) manufacturer:

Other Similar products are found below :

[614233C](#) [648584F](#) [MCH3443-TL-E](#) [MCH6422-TL-E](#) [FDPF9N50NZ](#) [IRFD120](#) [IRFF430](#) [JANTX2N5237](#) [2N7000](#) [FCA20N60_F109](#)
[FDZ595PZ](#) [2SK2267\(Q\)](#) [2SK2545\(Q,T\)](#) [405094E](#) [423220D](#) [MIC4420CM-TR](#) [VN1206L](#) [614234A](#) [715780A](#) [SSM6J414TU,LF\(T](#) [751625C](#)
[PSMN4R2-30MLD](#) [TK31J60W5,S1VQ\(O](#) [2SK2614\(TE16L1,Q\)](#) [DMN1017UCP3-7](#) [EFC2J004NUZTDG](#) [FCAB21350L1](#) [P85W28HP2F-](#)
[7071](#) [DMN1053UCP4-7](#) [NTE2384](#) [NTE2969](#) [NTE6400A](#) [DMN61D9UWQ-13](#) [US6M2GTR](#) [DMN31D5UDJ-7](#) [SSM6P54TU,LF](#)
[DMP22D4UFO-7B](#) [IPS60R3K4CEAKMA1](#) [DMN1006UCA6-7](#) [DMN16M9UCA6-7](#) [STF5N65M6](#) [STU5N65M6](#) [C3M0021120D](#)
[DMN13M9UCA6-7](#) [BSS340NWH6327XTSA1](#) [MCM3400A-TP](#) [DMTH10H4M6SPS-13](#) [IPS60R1K0PFD7SAKMA1](#)
[IPS60R360PFD7SAKMA1](#) [IPS60R600PFD7SAKMA1](#)